

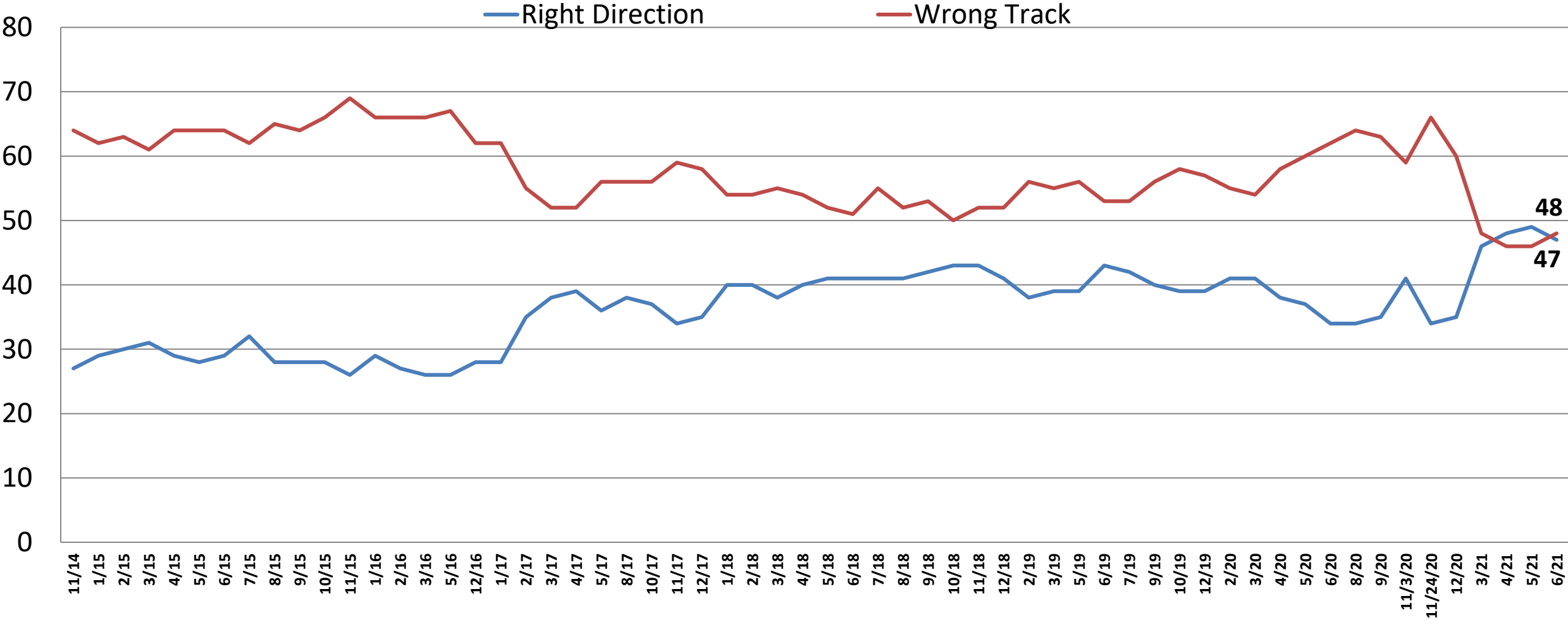


National Survey Results
General Election Likely Voters
Political Environment, Trends & Analysis

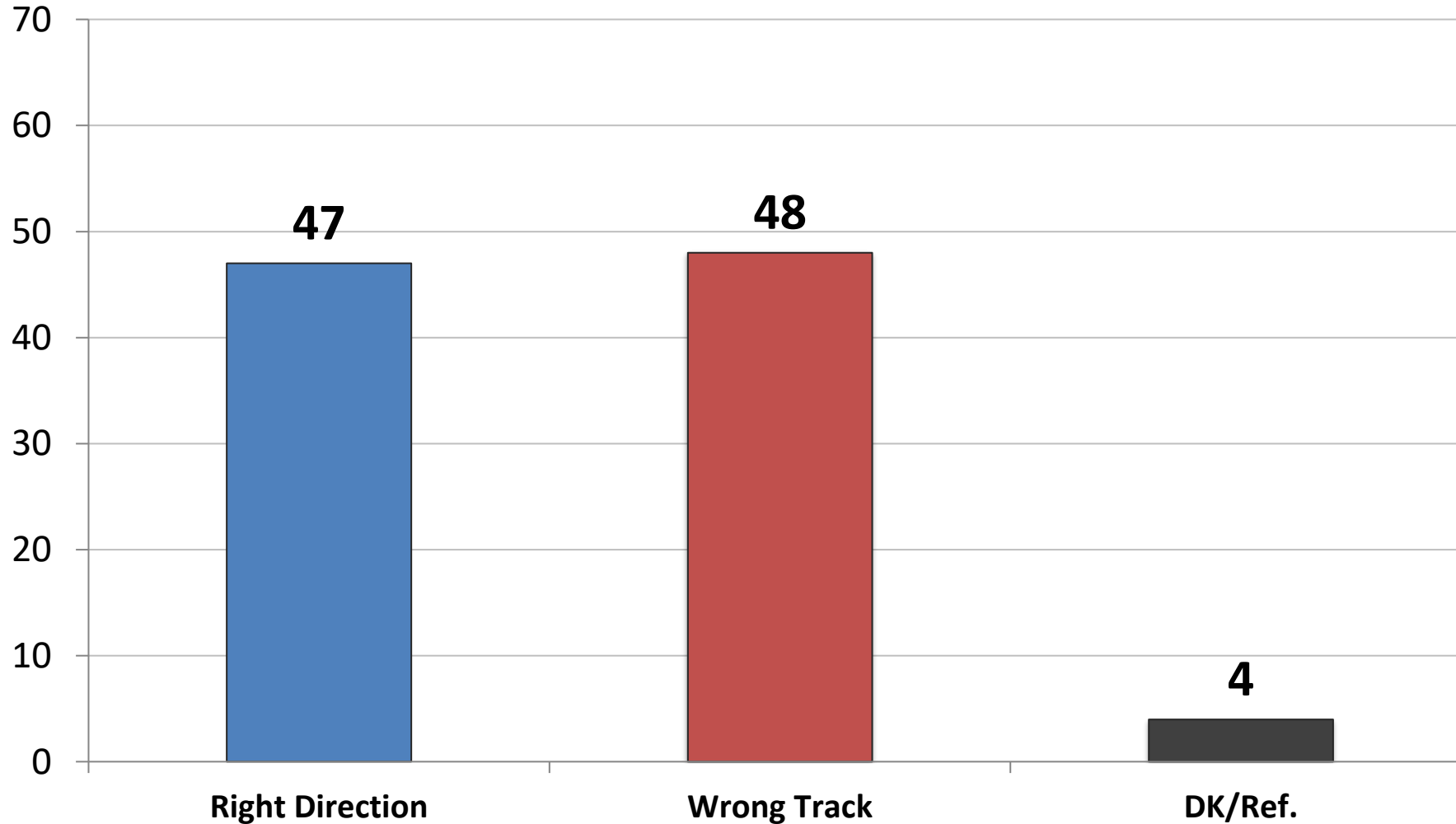
Field Dates: June 16-20, 2021
www.mclaughlinonline.com

Direction: United States

Time Series



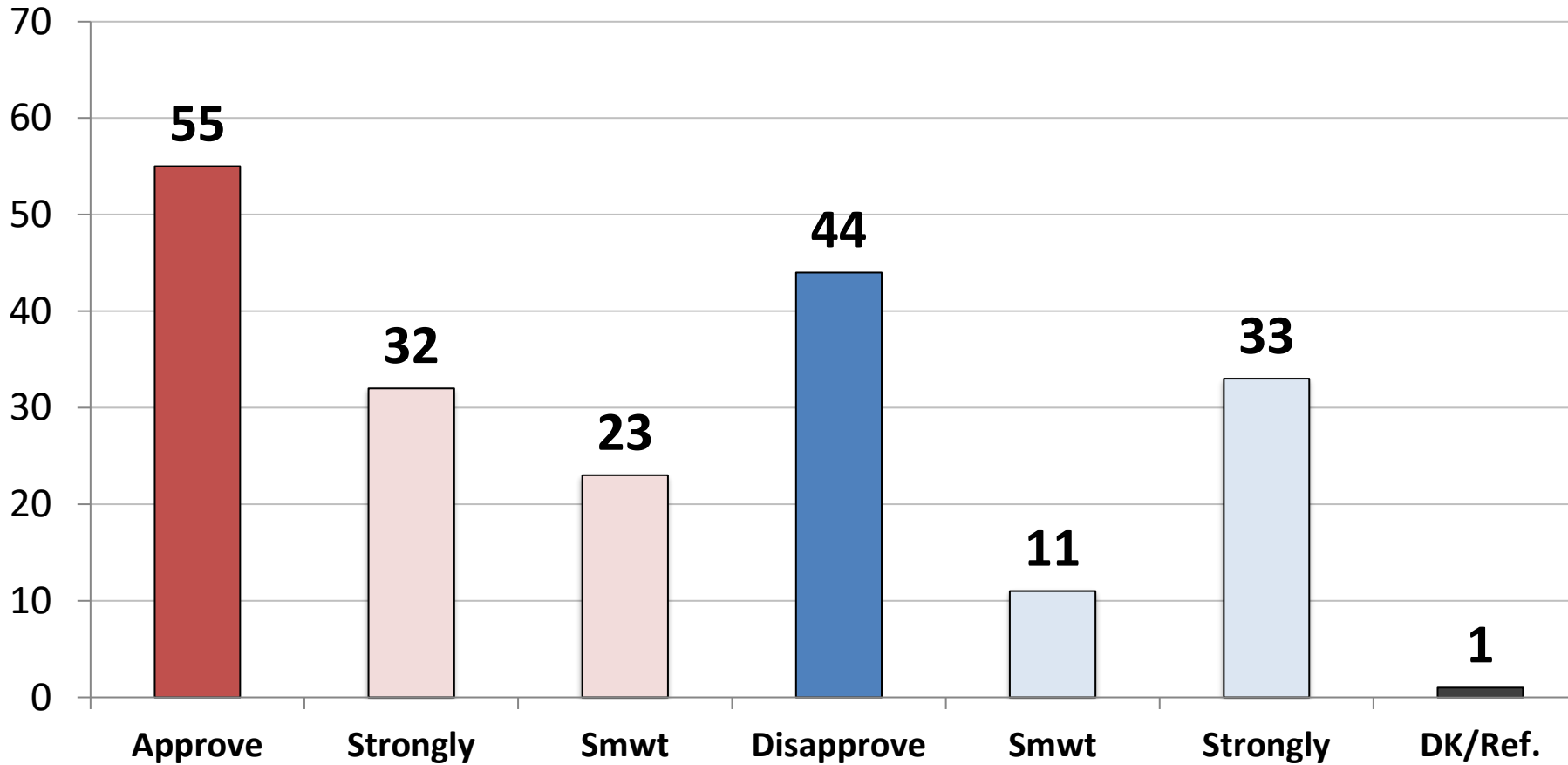
Direction: *United States*



	R	W
East	60	36
Midwest	48	48
South	42	54
West	46	48
Vote Trump 2020	13	84
Vote Biden 2020	79	16
Vote Cong. – GOP	17	81
Vote Cong. – DEM	80	15
Vote Cong. – UND	33	47
Approve Biden	80	15
Disapprove Biden	7	91
Republican	20	78
Democrat	80	15
Independent	39	55
Liberal	75	20
Moderate	54	39
Conservative	19	79
White	39	58
African- American	73	17
Hispanic	60	34
Under 55	57	36
Over 55	34	66
Married	44	53
Single	56	36
Men	52	45
Women	43	52
Live in Urban Area	64	32
Live in Suburban Area	44	53
Live in Rural Area	27	66

Job Rating: *Joe Biden*

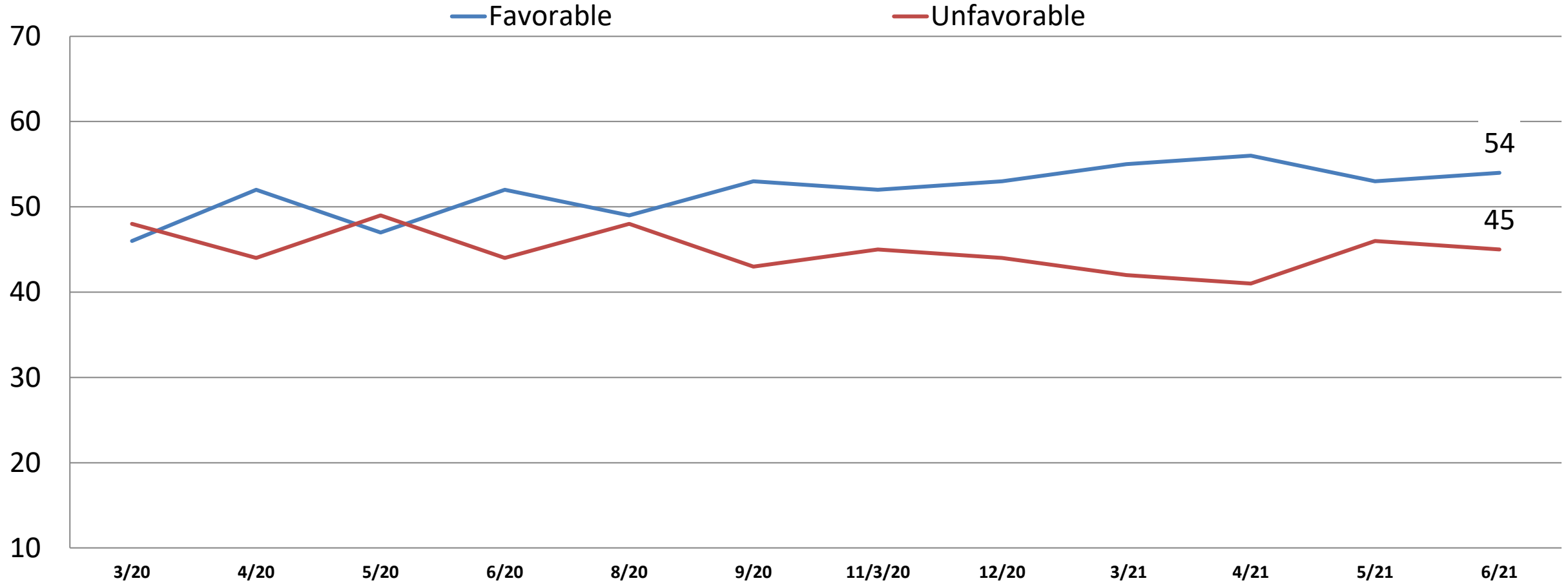
	3/21	4/21	5/21	6/21
Approve	55	58	56	55
Disapprove	40	41	43	44



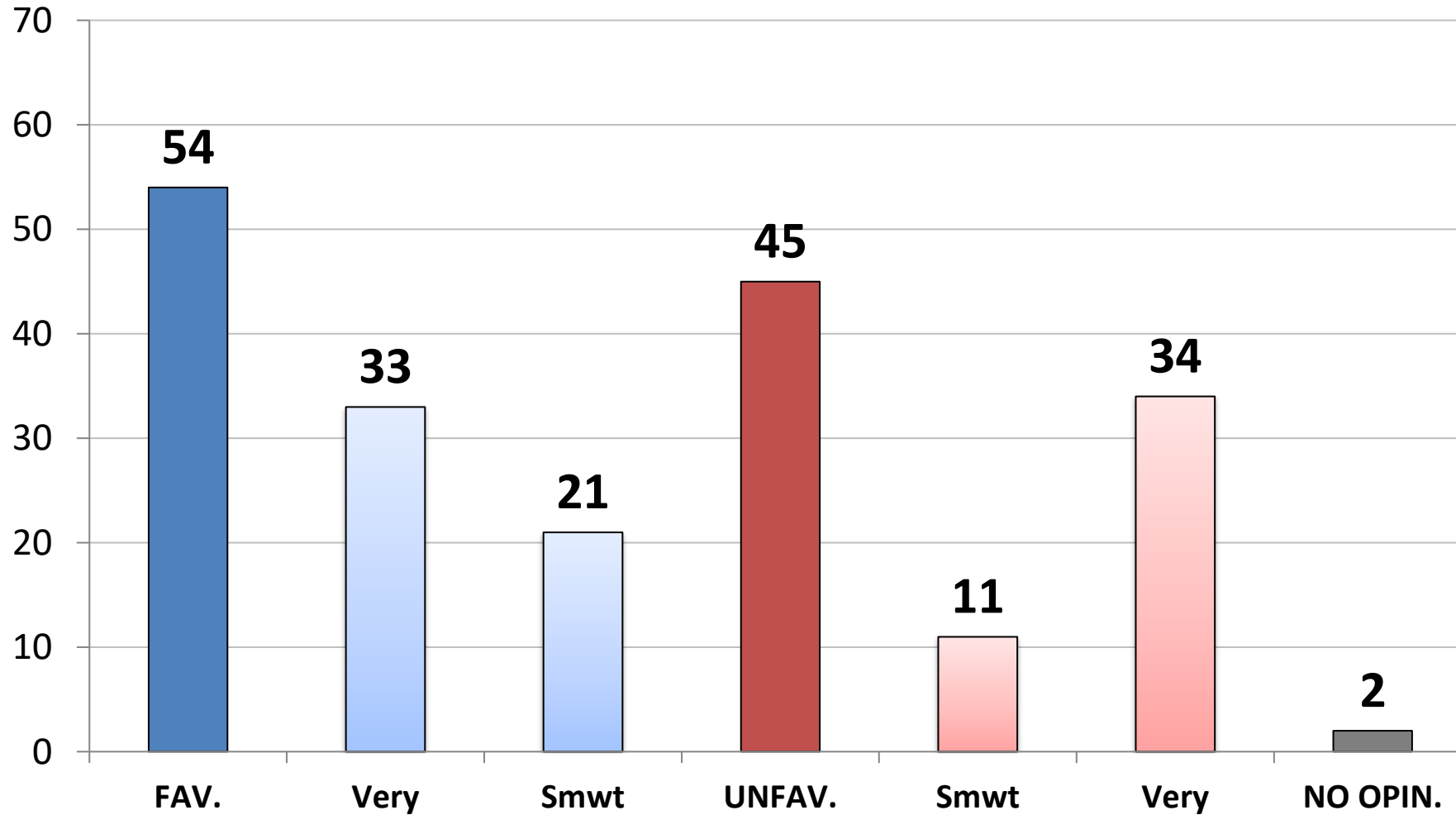
	App.	Disapp.
East	63	34
Midwest	54	44
South	51	48
West	55	44
Vote Trump 2020	15	84
Vote Biden 2020	91	7
Vote Cong. – GOP	18	81
Vote Cong. – DEM	94	6
Vote Cong.– UND	46	45
Approve Biden	100	0
Disapprove Biden	0	100
Republican	20	79
Democrat	92	7
Independent	50	47
Liberal	88	11
Moderate	63	34
Conservative	21	79
White	45	54
African- American	89	9
Hispanic	64	33
Under 55	68	30
Over 55	36	63
Married	51	49
Single	68	29
Men	58	40
Women	52	47
Live in Urban Area	71	28
Live in Suburban Area	51	48
Live in Rural Area	35	63

Opinion: Joe Biden

Time Series



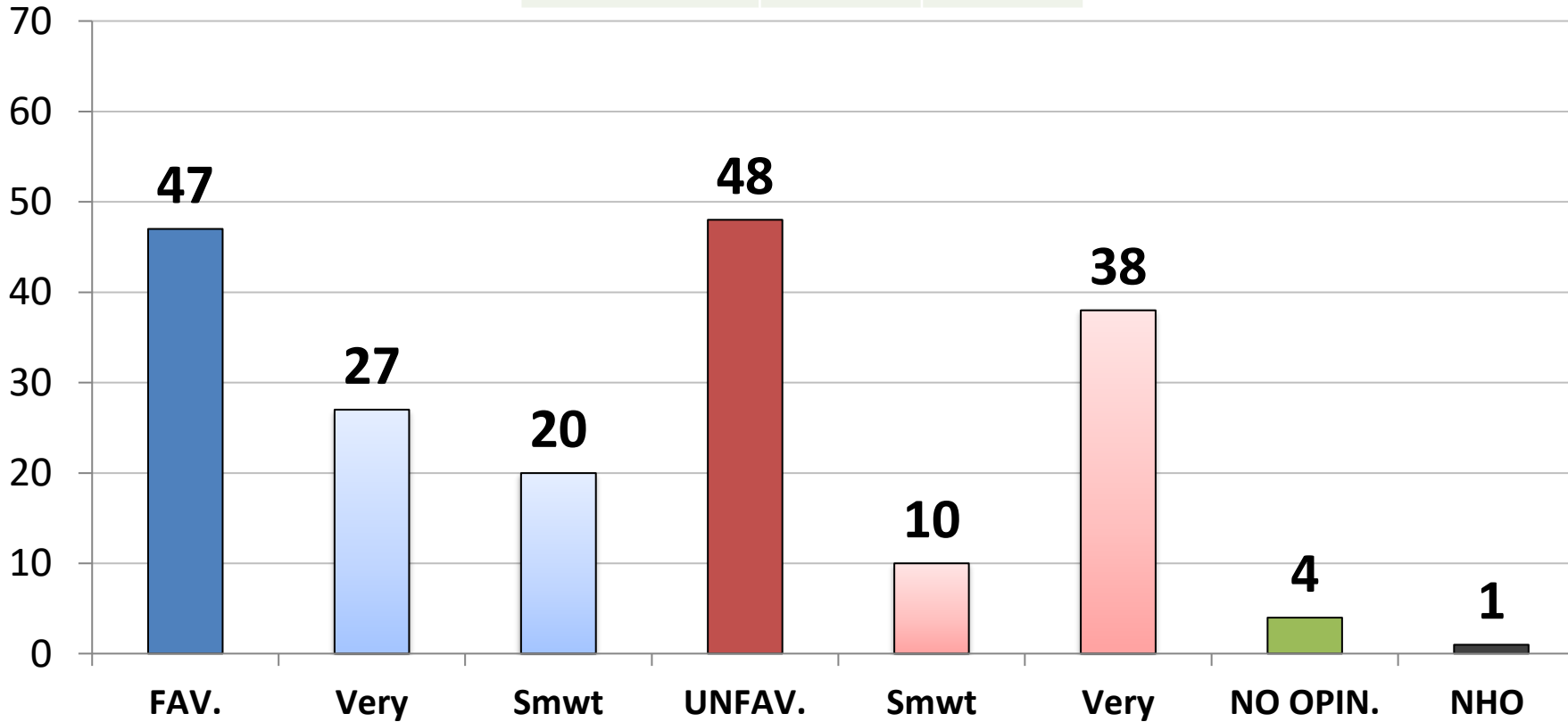
Opinion: *Joe Biden*



	Fav.	Unfav.
East	63	35
Midwest	54	44
South	49	50
West	54	44
Vote Trump 2020	13	85
Vote Biden 2020	91	8
Vote Cong. – GOP	16	83
Vote Cong. – DEM	93	7
Vote Cong.– UND	50	42
Approve Biden	94	5
Disapprove Biden	4	95
Republican	18	81
Democrat	91	8
Independent	51	47
Liberal	85	14
Moderate	64	34
Conservative	20	78
White	44	55
African- American	88	10
Hispanic	63	33
Under 55	66	32
Over 55	37	63
Married	50	49
Single	66	31
Men	57	42
Women	51	48
Live in Urban Area	71	29
Live in Suburban Area	50	49
Live in Rural Area	34	63

Opinion: *Kamala Harris*

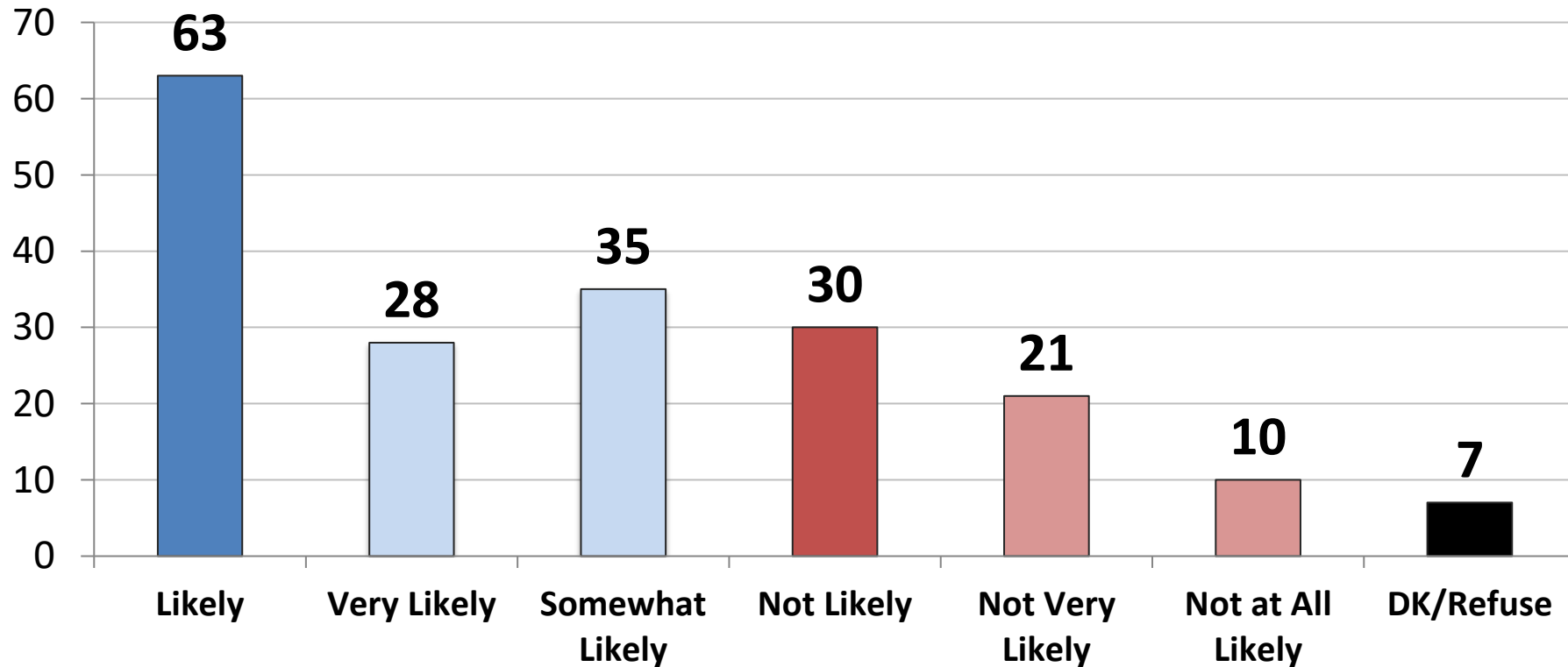
	5/21	6/21
Favorable	47	47
Unfavorable	48	48



	Fav.	Unfav.
East	52	43
Midwest	49	46
South	43	53
West	48	46
Vote Trump 2020	11	85
Vote Biden 2020	81	14
Vote Cong. – GOP	12	83
Vote Cong. – DEM	84	12
Vote Cong.– UND	40	45
Approve Biden	82	13
Disapprove Biden	4	93
Republican	14	82
Democrat	81	15
Independent	44	48
Liberal	77	18
Moderate	54	37
Conservative	16	82
White	37	59
African- American	82	13
Hispanic	56	37
Under 55	57	35
Over 55	33	66
Married	44	53
Single	56	35
Men	48	47
Women	46	49
Live in Urban Area	61	33
Live in Suburban Area	45	51
Live in Rural Area	27	69

Joe Biden was 78-years old when he was sworn in and will be 82 at the end of his term. How likely is it that Vice-President Kamala Harris will be president before the end of Joe Bidens 4-Year term?

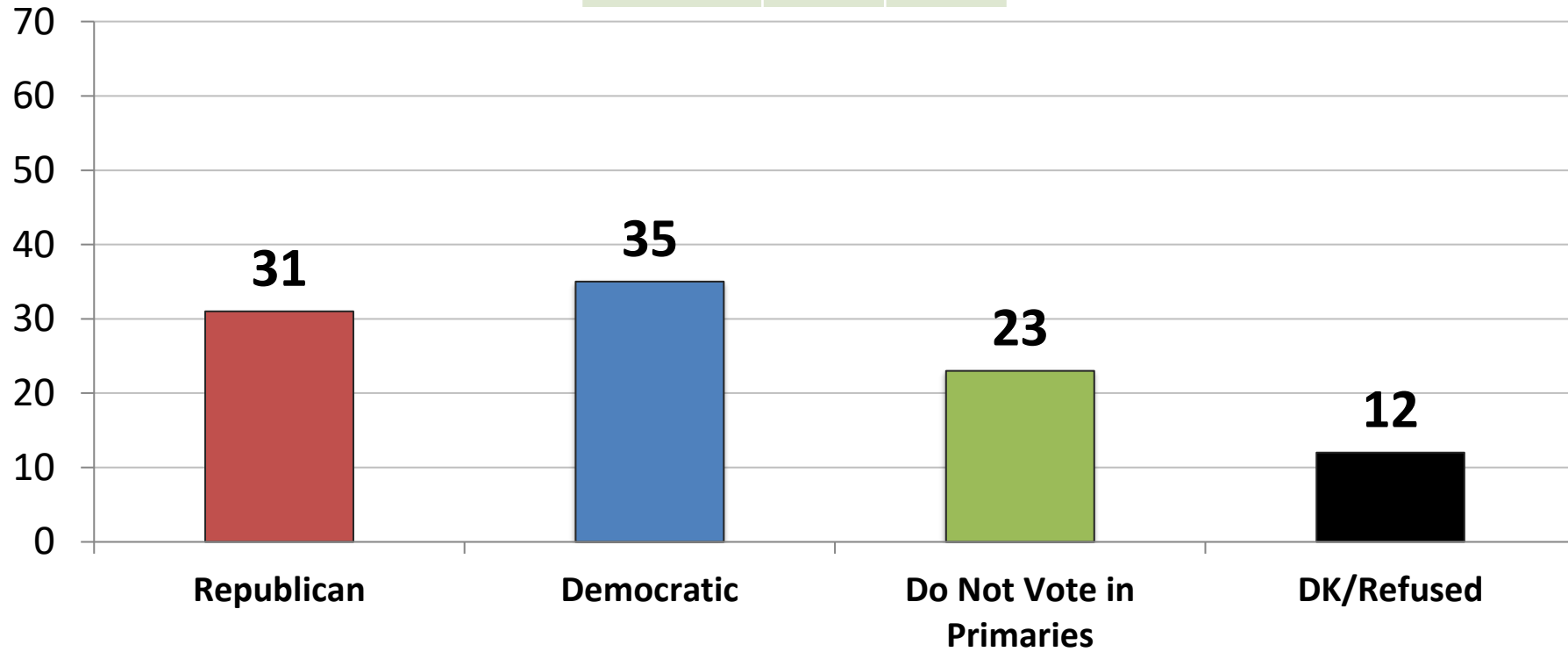
	5/21	6/21
Likely	64	63
Not Likely	31	30



	Likely	Not
East	64	29
Midwest	62	31
South	64	30
West	62	31
Vote Trump 2020	77	17
Vote Biden 2020	50	42
Vote Cong. – GOP	75	20
Vote Cong. – DEM	50	42
Vote Cong.– UND	66	21
Approve Biden	54	39
Disapprove Biden	76	19
Republican	74	20
Democrat	56	38
Independent	58	33
Liberal	57	38
Moderate	54	38
Conservative	76	17
White	68	26
African- American	49	39
Hispanic	54	43
Under 55	64	29
Over 55	62	31
Married	68	26
Single	58	34
Men	67	28
Women	59	32
Live in Urban Area	66	30
Live in Suburban Area	62	31
Live in Rural Area	62	27

INDEPENDENTS ONLY: Thinking ahead to the 2024 primary election for President, in which party's primary are you more likely to vote – the Republican primary or the Democratic primary

	5/21	6/21
Republican	31	31
Democrat	33	35
Don't Vote	25	23



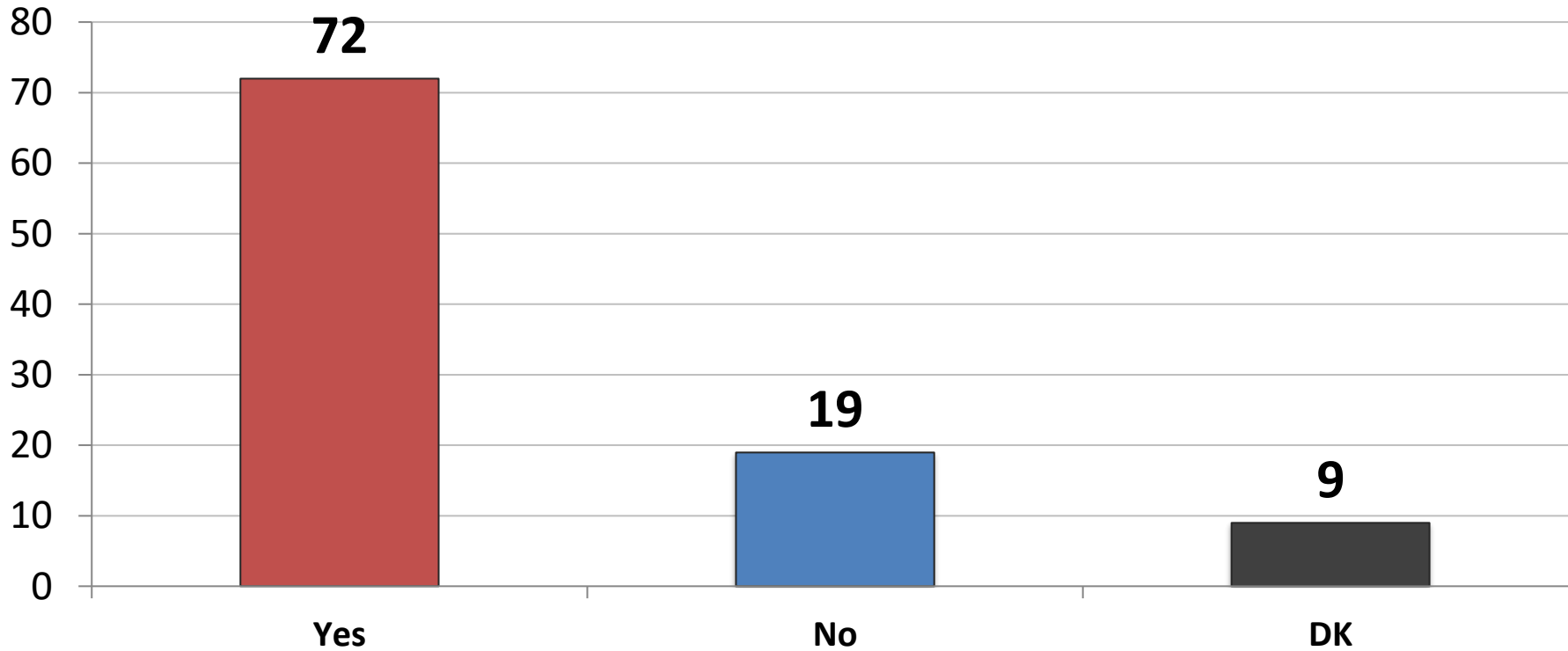
	GOP	DEM
East	28	36
Midwest	46	36
South	29	28
West	21	40
Vote Trump 2020	53	8
Vote Biden 2020	12	59
Vote Cong. – GOP	62	10
Vote Cong. – DEM	10	63
Vote Cong.– UND	12	28
Approve Biden	13	54
Disapprove Biden	52	15
Republican	-	-
Democrat	-	-
Independent	31	35
Liberal	11	64
Moderate	25	33
Conservative	58	16
White	38	29
African- American	0	58
Hispanic	3	54
Under 55	21	45
Over 55	41	24
Married	42	23
Single	14	53
Men	33	32
Women	29	37
Live in Urban Area	21	46
Live in Suburban Area	30	35
Live in Rural Area	46	20

**Thinking ahead to the 2024 Democratic primary election for President, if that election were held today among the following candidates, for whom would you vote?
(Democrat Primary Voters)**

(11/20: N=445) (12/20: N=443) (3/21: N=443) (4/21: N=458) (5/21: N=459) (6/21: N=463)	11/20	12/20	3/21	4/21	5/21	6/21
Kamala Harris	29	25	28	34	35	31
Michelle Obama	23	29	23	20	16	19
Stacey Abrams	*	*	*	*	4	5
Alexandria Ocasio-Cortez	6	7	8	3	7	5
Pete Buttigieg	6	5	7	5	6	4
Andrew Yang	*	*	4	4	2	3
Amy Klobuchar	2	2	3	4	3	3
Beto O'Rourke	*	*	2	2	2	3
Cory Booker	2	3	4	4	4	3
John Hickenlooper	1	3	2	2	1	2
Kirsten Gillibrand	1	1	1	2	1	2
Andrew Cuomo	5	5	1	2	1	2
Deval Patrick	1	1	1	1	2	1
Gavin Newsom	*	*	0	2	2	1
Tim Kaine	1	2	1	1	2	1
Ilhan Omar	1	1	1	1	1	1
Undecided	23	18	14	12	13	16

Do you want to see Donald Trump run for President again in 2024? (Republican Primary Voters)

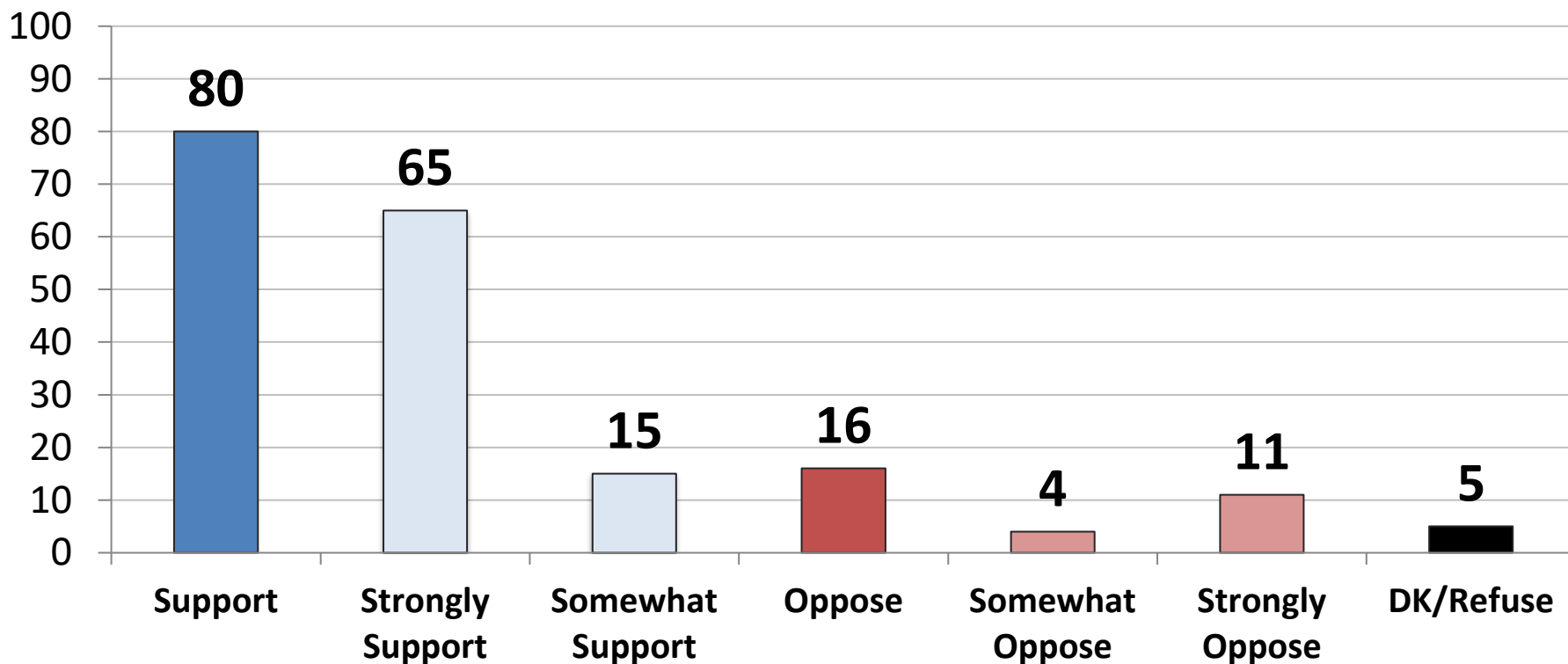
	3/21	4/21	5/21	6/21
Yes	72	69	73	72
No	20	22	17	19



	Yes	No
East	76	19
Midwest	65	23
South	75	16
West	71	22
Vote Trump 2020	77	14
Vote Biden 2020	18	76
Vote Cong. – GOP	75	16
Vote Cong. – DEM	30	66
Vote Cong. – UND	34	65
Approve Biden	51	43
Disapprove Biden	78	13
Republican	72	19
Democrat	-	-
Independent	-	-
Liberal	69	27
Moderate	67	28
Conservative	74	16
White	73	18
African- American	73	27
Hispanic	61	27
Under 55	76	18
Over 55	69	20
Married	71	19
Single	68	21
Men	70	20
Women	74	18
Live in Urban Area	77	17
Live in Suburban Area	67	23
Live in Rural Area	81	10

If Donald Trump ran for President again in 2024, would you support or oppose him for the Republican nomination? (Republican Primary Voters)

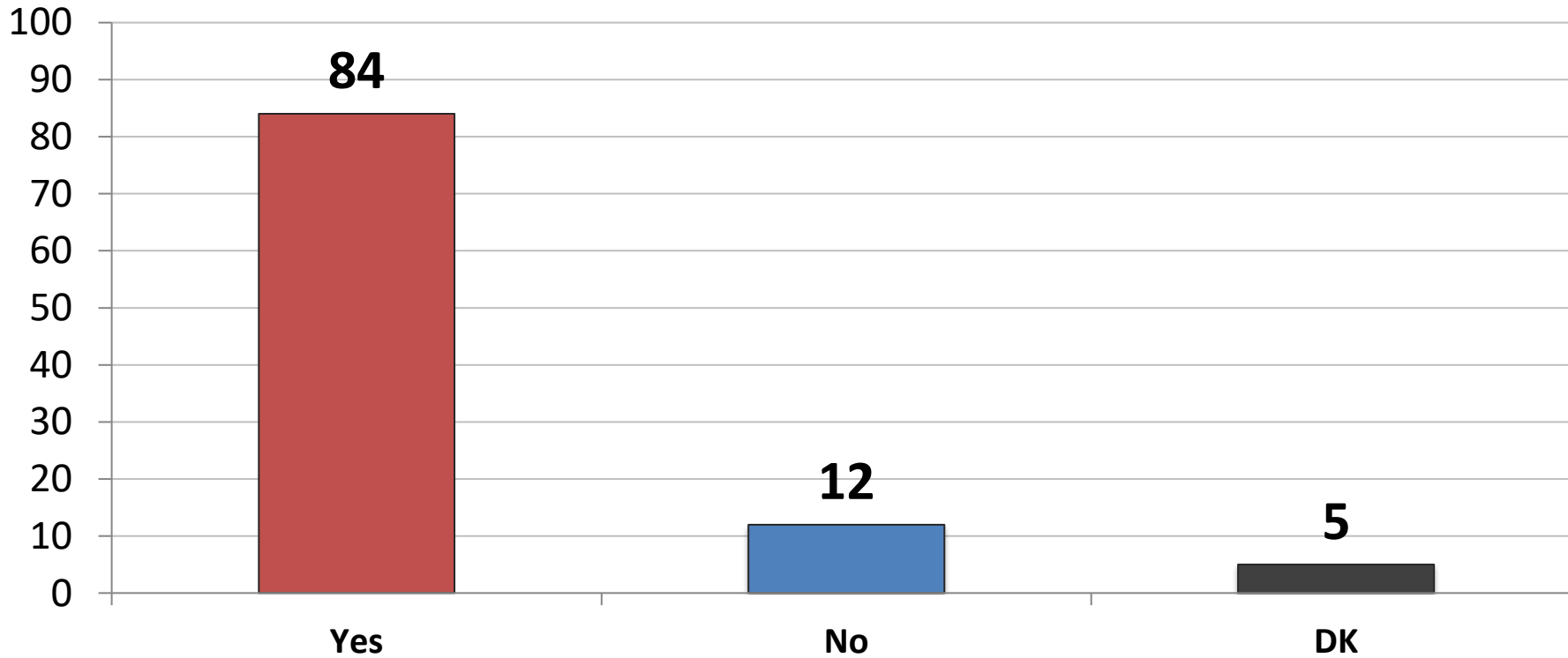
	3/21	4/21	5/21	6/21
Support	81	82	82	80
Oppose	15	15	13	16



	Support	Oppose
East	79	18
Midwest	77	18
South	82	12
West	79	19
Vote Trump 2020	87	8
Vote Biden 2020	24	73
Vote Cong. – GOP	84	12
Vote Cong. – DEM	35	62
Vote Cong. – UND	43	49
Approve Biden	54	43
Disapprove Biden	87	9
Republican	82	14
Democrat	-	-
Independent	70	22
Liberal	77	20
Moderate	67	29
Conservative	85	10
White	80	15
African- American	79	21
Hispanic	74	24
Under 55	84	15
Over 55	77	16
Married	80	18
Single	80	16
Men	79	18
Women	81	13
Live in Urban Area	78	16
Live in Suburban Area	77	19
Live in Rural Area	87	8

If Donald Trump won the Republican nomination for President, would you vote for him in the 2024 general election? (Republican Primary Voters)

	3/21	4/21	5/21	6/21
Yes	80	82	83	84
No	14	13	11	12



	Yes	No
East	78	17
Midwest	83	12
South	89	7
West	79	17
Vote Trump 2020	91	5
Vote Biden 2020	25	70
Vote Cong. – GOP	88	7
Vote Cong. – DEM	37	63
Vote Cong. – UND	43	56
Approve Biden	56	40
Disapprove Biden	91	5
Republican	86	11
Democrat	-	-
Independent	74	17
Liberal	77	21
Moderate	72	25
Conservative	88	6
White	84	11
African- American	82	18
Hispanic	80	20
Under 55	85	12
Over 55	82	12
Married	86	12
Single	78	15
Men	83	15
Women	84	9
Live in Urban Area	84	12
Live in Suburban Area	81	14
Live in Rural Area	89	7

**Thinking ahead to the 2024 Republican primary election for President, if that election were held today among the following candidates, for whom would you vote?
(Republican Primary Voters)**

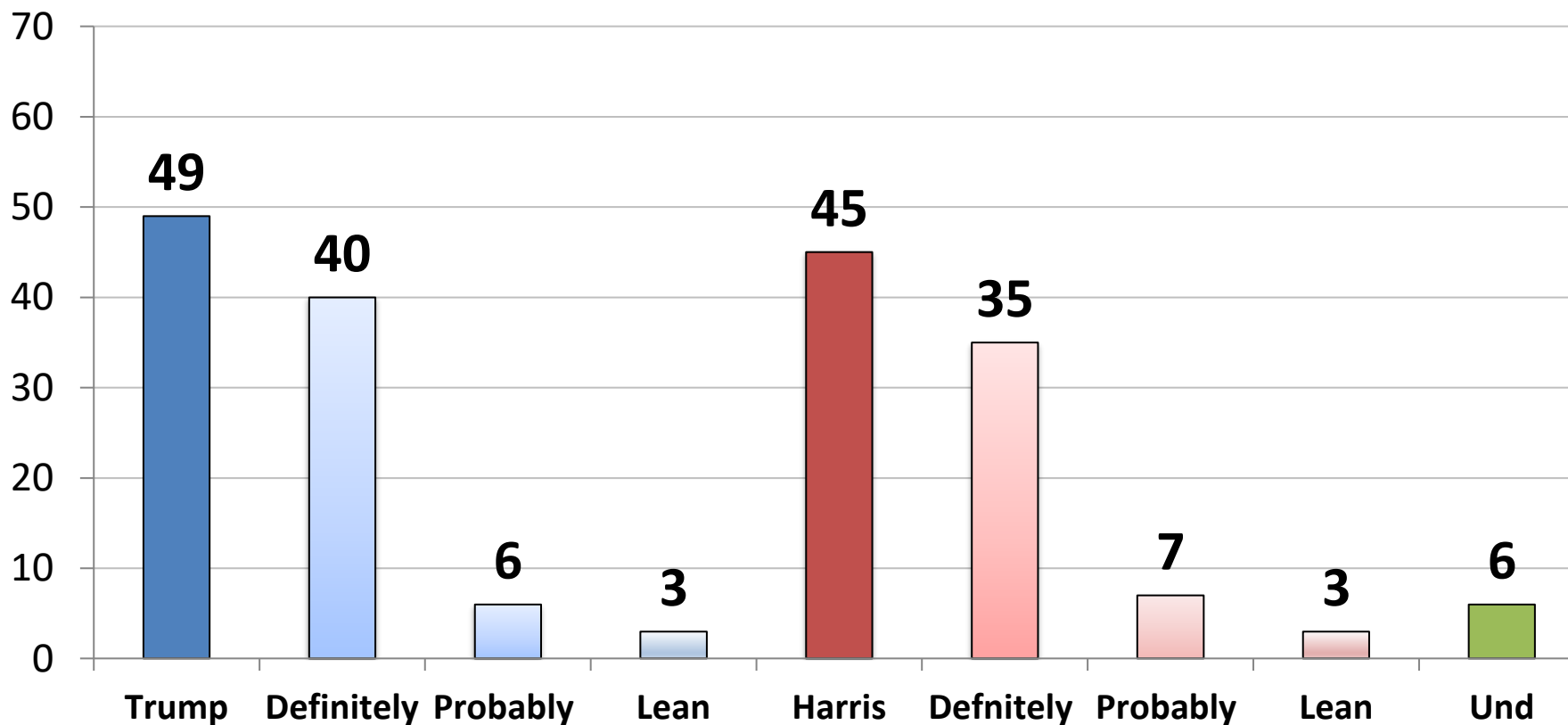
(11/20: N=442) (12/20: N=438) (3/21: N=448) (4/21: N=441) (5/21: N=444) (6/21: N=444)	11/20	12/20	3/21	4/21	5/21	6/21
Donald Trump	53	56	55	55	57	55
Ron DeSantis	2	1	4	7	8	9
Mike Pence	9	11	8	10	10	8
Candace Owens	*	*	3	2	3	4
Ted Cruz	4	5	5	3	3	4
Nikki Haley	4	3	3	2	5	3
Mitt Romney	4	4	3	3	2	3
Marco Rubio	2	1	1	1	0	1
Tim Scott	1	1	1	1	1	1
John Kasich	3	2	2	3	1	1
Liz Cheney	*	*	*	*	1	1
Mike Pompeo	1	1	1	1	1	1
Tom Cotton	1	1	2	1	0	1
Rick Scott	1	0	0	1	1	1
Kristi Noem	1	2	1	0	1	0
Undecided	15	10	10	9	7	7

**Thinking ahead to the 2024 Republican primary election for President, if that election were held today among the following candidates, for whom would you vote?
(Republican Primary Voters)**

(11/20: N=442) (12/20: N=438) (3/21: N=448) (4/21: N=441) (5/21: N=444) (6/21: N=444)	11/20	12/20	3/21	4/21	5/21	6/21
Ron DeSantis	2	2	9	14	18	24
Mike Pence	30	20	15	19	19	19
Donald Trump, JR	20	20	21	15	13	15
Ted Cruz	5	7	9	10	12	6
Mitt Romney	5	5	6	3	3	5
Nikki Haley	8	6	5	3	5	4
Ivanka Trump	*	4	3	3	3	4
Candace Owens	*	*	4	4	5	3
Liz Cheney	*	*	*	*	1	2
Marco Rubio	2	3	2	3	1	2
Kristi Noem	1	2	2	1	1	1
Mike Pompeo	*	1	2	2	2	1
Tim Scott	1	2	2	1	2	1
Tom Cotton	1	2	2	2	1	1
John Kasich	2	3	2	2	2	1
Rick Scott	1	0.4	1	1	0	1
Undecided	21	22	17	14	12	11

Now, if the 2024 Presidential election were held today, which one of the following best describes how you would vote in the general election for President between Donald Trump, the Republican candidate and Kamala Harris, the Democrat candidate, for whom would you vote?

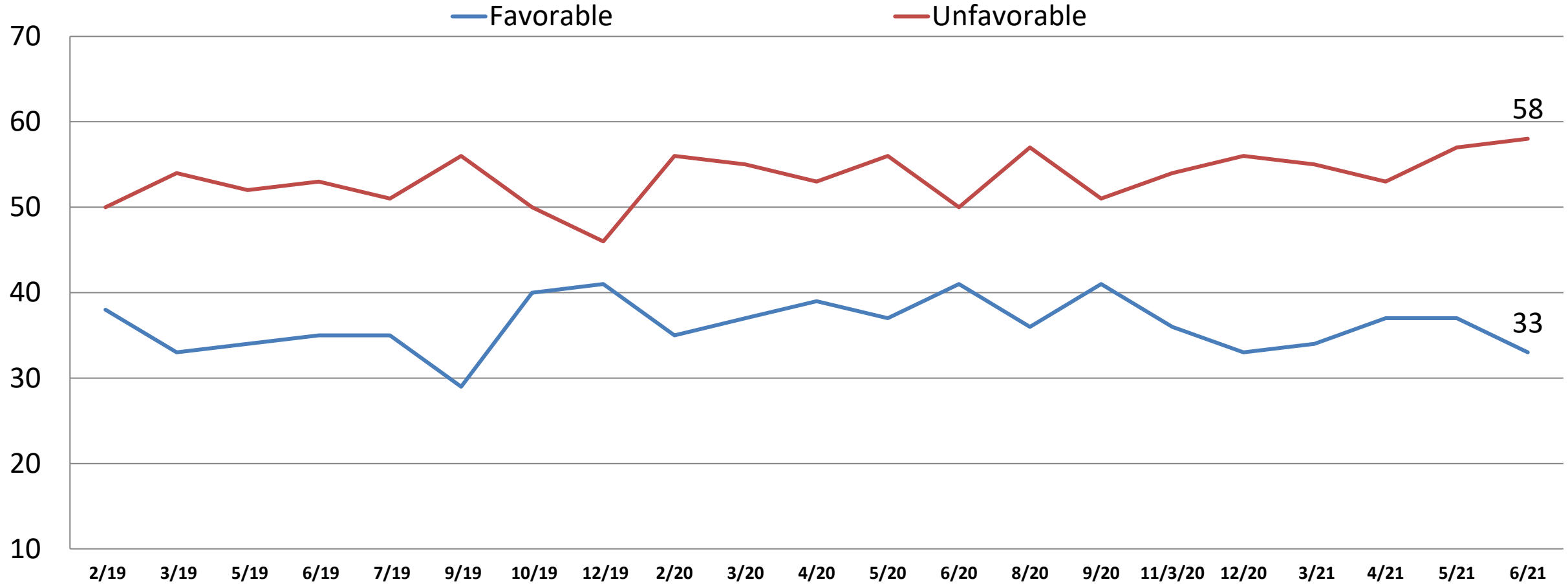
	5/21	6/21
Donald Trump	49	49
Kamala Harris	45	45



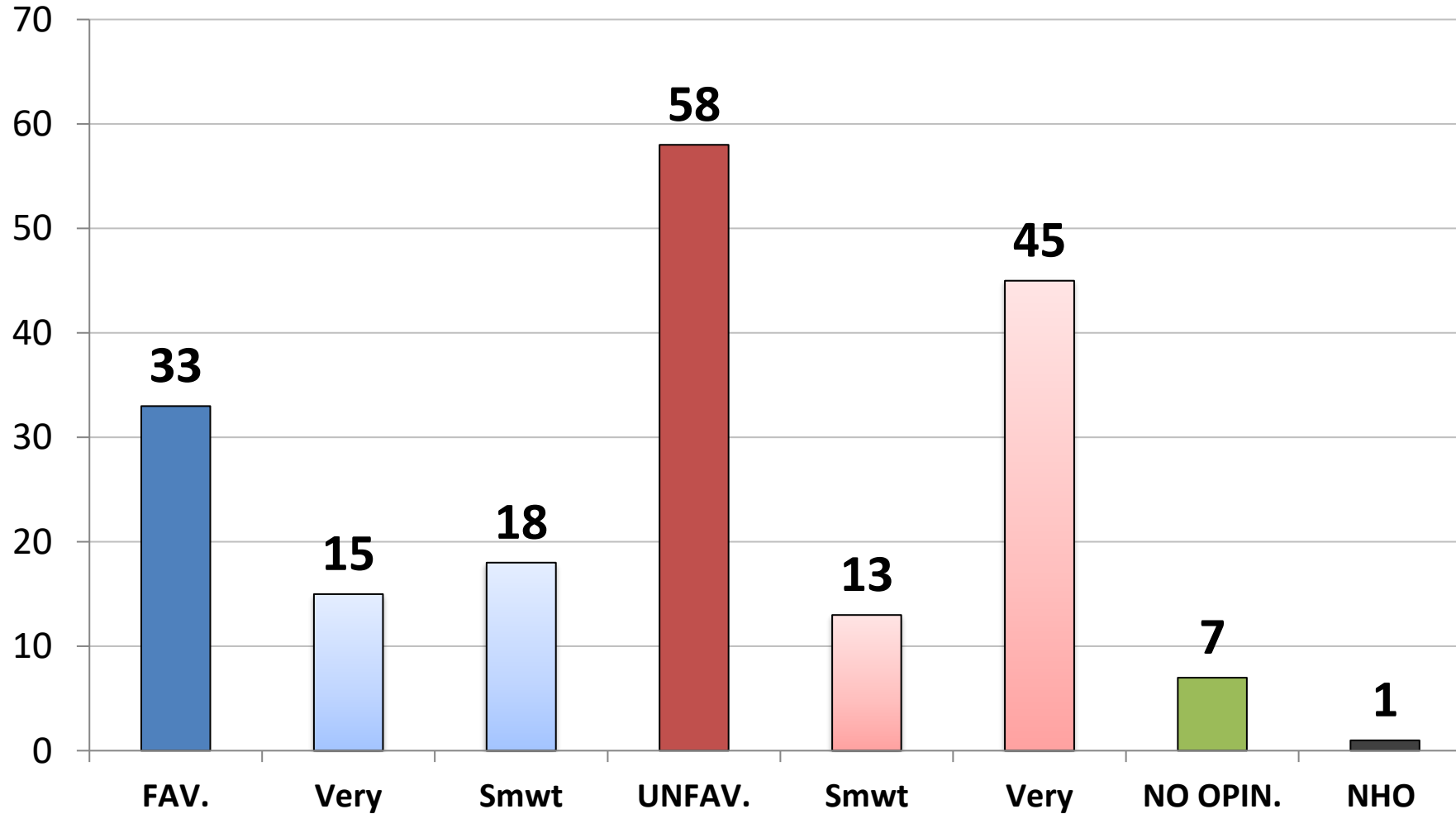
	Trump	Harris
East	46	49
Midwest	48	48
South	53	42
West	45	45
Vote Trump 2020	91	4
Vote Biden 2020	11	84
Vote Cong. – GOP	90	6
Vote Cong. – DEM	8	87
Vote Cong.– UND	41	31
Approve Biden	17	77
Disapprove Biden	89	6
Republican	88	7
Democrat	12	84
Independent	46	43
Liberal	20	77
Moderate	36	54
Conservative	83	12
White	61	34
African- American	9	87
Hispanic	37	54
Under 55	38	55
Over 55	64	31
Married	59	37
Single	30	64
Men	51	43
Women	47	47
Live in Urban Area	36	57
Live in Suburban Area	51	44
Live in Rural Area	67	28

Opinion: Nancy Pelosi

Time Series



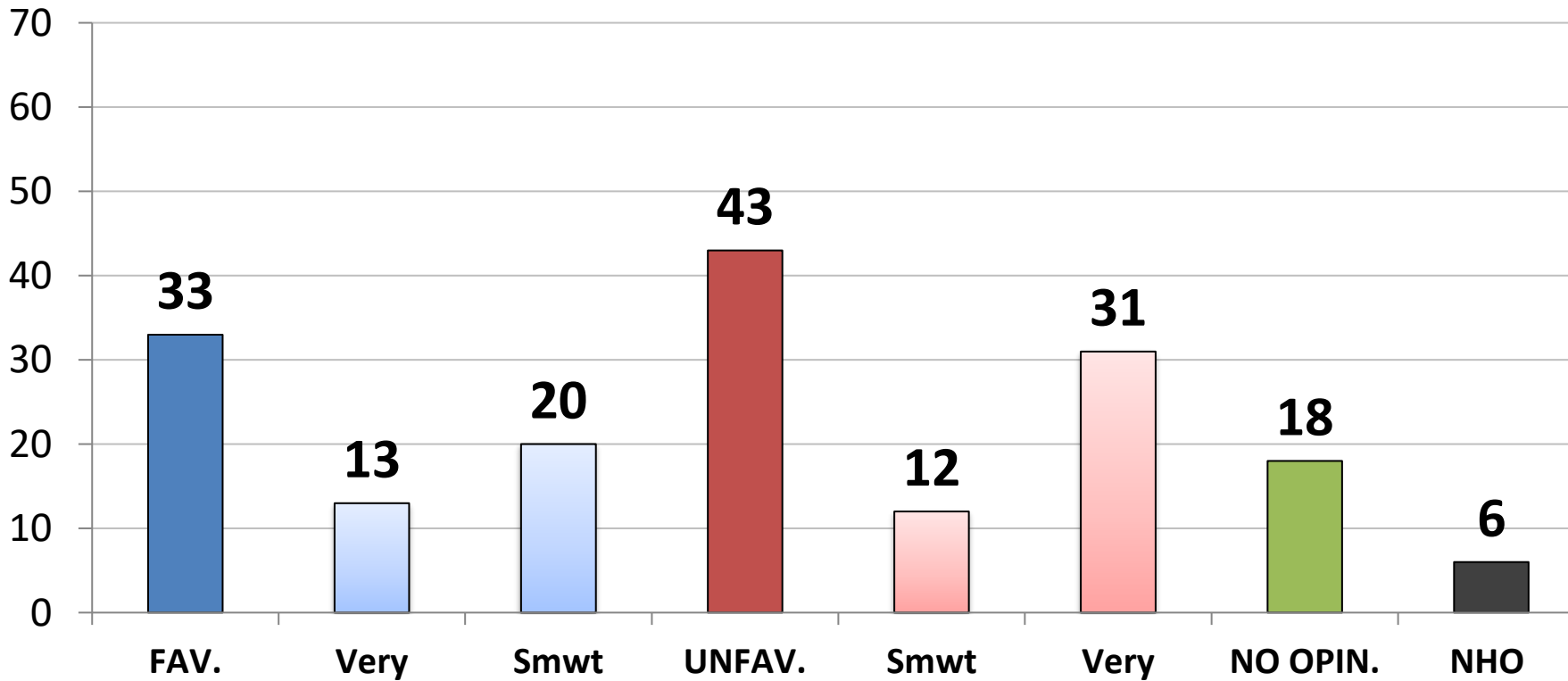
Opinion: *Nancy Pelosi*



	Fav.	Unfav.
East	38	57
Midwest	36	56
South	31	62
West	32	57
Vote Trump 2020	8	89
Vote Biden 2020	57	31
Vote Cong. – GOP	9	87
Vote Cong. – DEM	61	28
Vote Cong. – UND	12	67
Approve Biden	58	31
Disapprove Biden	3	93
Republican	9	87
Democrat	60	30
Independent	30	60
Liberal	59	33
Moderate	36	51
Conservative	10	85
White	27	67
African- American	56	27
Hispanic	39	51
Under 55	37	50
Over 55	28	71
Married	35	60
Single	34	51
Men	37	56
Women	30	61
Live in Urban Area	49	42
Live in Suburban Area	29	63
Live in Rural Area	16	78

Opinion: *Chuck Schumer*

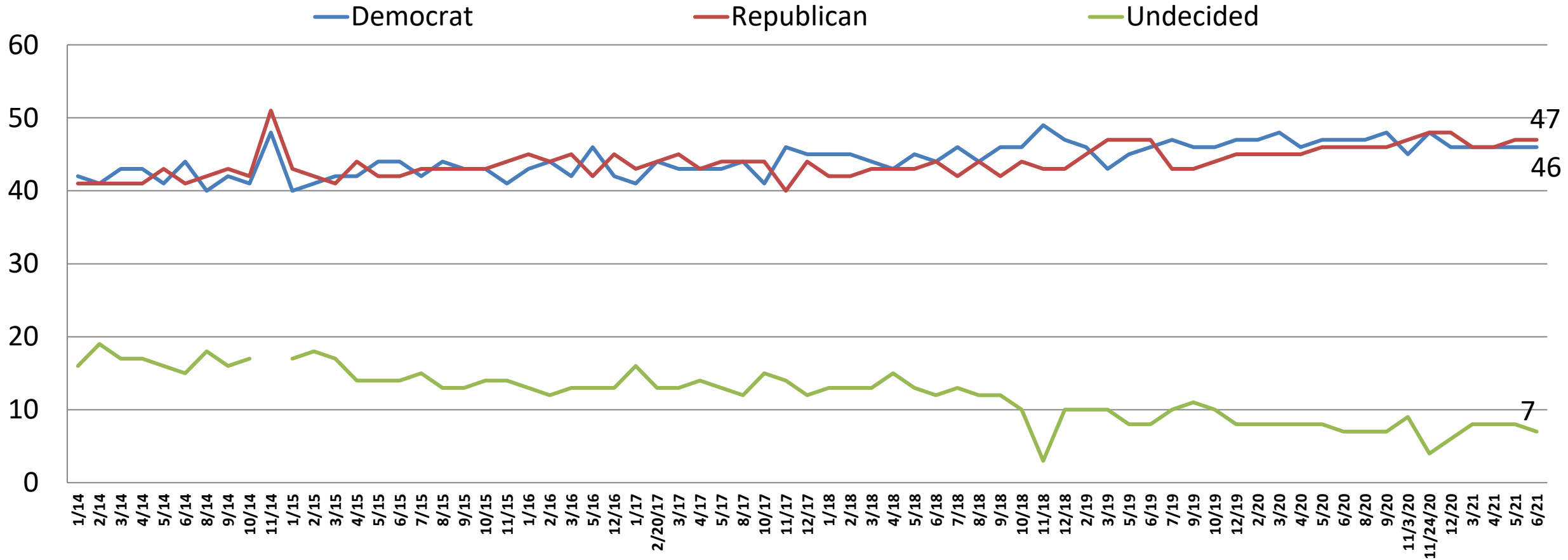
	4/21	5/21	6/21
Favorable	34	32	33
Unfavorable	47	48	43



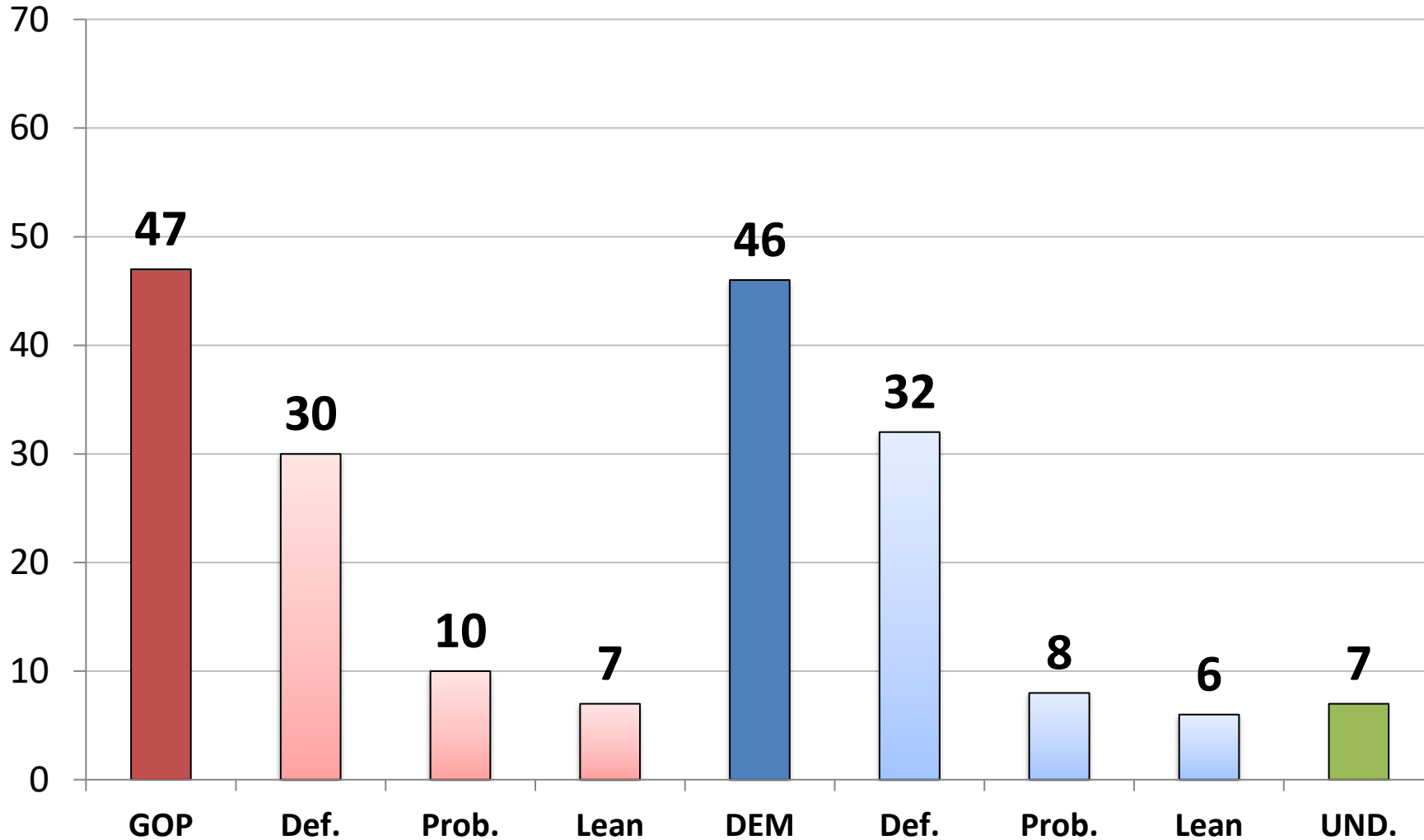
	Fav.	Unfav.
East	43	41
Midwest	30	41
South	30	47
West	33	40
Vote Trump 2020	12	67
Vote Biden 2020	52	21
Vote Cong. – GOP	13	67
Vote Cong. – DEM	55	19
Vote Cong.– UND	22	41
Approve Biden	56	19
Disapprove Biden	6	74
Republican	15	64
Democrat	53	20
Independent	30	46
Liberal	57	20
Moderate	35	35
Conservative	12	68
White	29	50
African- American	49	17
Hispanic	39	34
Under 55	37	32
Over 55	27	59
Married	34	47
Single	34	31
Men	39	47
Women	28	39
Live in Urban Area	47	30
Live in Suburban Area	30	49
Live in Rural Area	17	51

Generic Ballot: U.S. Congress

Time Series



Generic Ballot: *U.S. Congress*



	GOP	DEM.	UND.
East	36	55	9
Midwest	47	46	7
South	53	44	3
West	46	41	12
Vote Trump 2020	90	3	7
Vote Biden 2020	8	86	6
Vote Cong. – GOP	100	0	0
Vote Cong. – DEM	0	100	0
Vote Cong.– UND	0	0	100
Approve Biden	15	79	6
Disapprove Biden	87	6	7
Republican	94	4	2
Democrat	7	92	2
Independent	40	39	21
Liberal	17	80	3
Moderate	33	52	15
Conservative	84	13	3
White	57	35	7
African- American	10	86	4
Hispanic	40	51	9
Under 55	35	56	8
Over 55	63	32	5
Married	56	40	4
Single	29	63	8
Men	46	49	5
Women	48	44	9
Live in Urban Area	33	61	6
Live in Suburban Area	51	43	6
Live in Rural Area	61	28	11

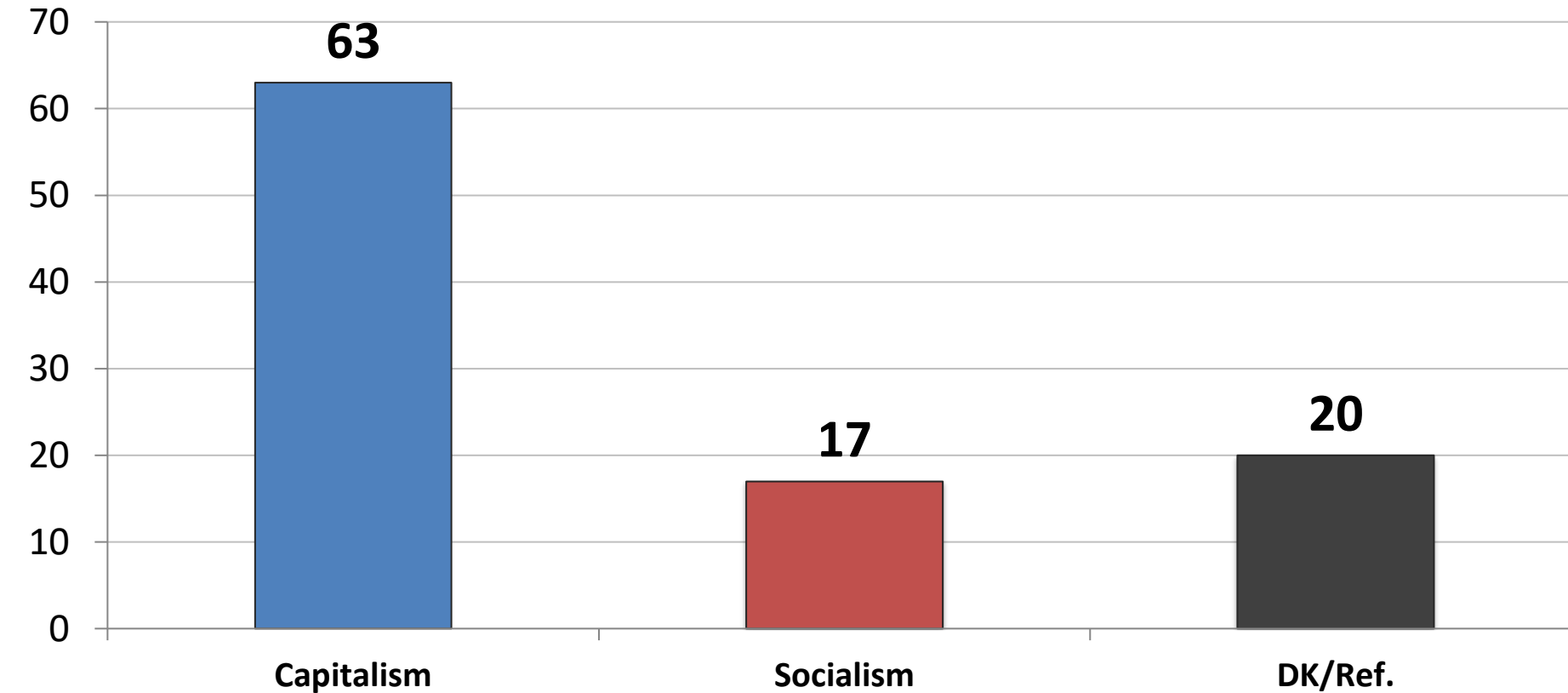
All things being equal, do you prefer:

1. *Free Market Capitalism*

or.

2. *Big Government Socialism*

	6/19	7/19	9/19	10/19	12/19	2/20	3/20	4/20	5/20	6/20	8/20	9/20	11/20	12/20	3/21	4/21	5/21	6/21
Capitalism	63	60	61	63	60	61	62	59	61	62	59	60	76	58	60	63	64	63
Socialism	14	14	15	14	16	12	13	17	16	15	17	18	24	16	18	19	15	17



	<u>C</u>	<u>S</u>
East	62	18
Midwest	59	19
South	67	15
West	60	19
Vote Trump 2020	79	7
Vote Biden 2020	47	27
Vote Cong. – GOP	81	8
Vote Cong. – DEM	46	29
Vote Cong.– UND	46	6
Approve Biden	47	27
Disapprove Biden	82	5
Republican	82	7
Democrat	46	29
Independent	60	16
Liberal	43	34
Moderate	55	16
Conservative	84	5
White	70	16
African- American	36	19
Hispanic	59	20
Under 55	51	24
Over 55	79	8
Married	67	17
Single	50	23
Men	67	20
Women	59	15
Live in Urban Area	55	23
Live in Suburban Area	67	16
Live in Rural Area	64	9

Now, from the following list, which issue is personally most important to you?

	<u>4/20</u>	<u>5/20</u>	<u>6/20</u>	<u>8/20</u>	<u>9/20</u>	<u>12/20</u>	<u>3/21</u>	<u>4/21</u>	<u>5/21</u>	<u>6/21</u>	Rep	Dem	Ind	Lib	Mod	Cons	Under 55	Over 55	Men	Women
SOCIAL	18	20	30	23	27	22	22	27	24	28	17	39	27	43	25	18	34	19	27	28
Affordable Health care	7	7	7	6	7	7	7	7	7	9	5	11	11	13	7	7	11	5	6	11
Reduce Climate Change	4	6	5	4	5	3	5	6	5	5	3	9	4	11	4	2	7	3	6	5
Protect Medicare	4	4	5	5	6	4	4	5	4	5	4	6	4	6	6	4	3	8	5	5
Improving Education	3	4	5	4	3	3	2	4	3	4	3	5	4	6	4	3	7	1	6	3
Improve Race Relations	*	*	8	7	6	5	4	6	4	4	1	8	3	7	4	1	6	2	4	4
ECONOMIC	26	31	22	23	22	26	25	21	27	25	30	20	25	19	26	29	24	26	26	25
Reopening the Economy	11	16	11	13	10	12	13	9	15	7	10	6	6	5	9	9	7	9	8	7
Reduce Gov't Waste	4	3	4	3	3	4	5	6	5	6	9	3	7	3	7	9	4	9	6	6
Create Jobs	5	7	8	7	9	9	7	7	8	6	5	8	6	8	6	4	8	4	7	5
Reduce Inflation	*	*	*	*	*	*	*	*	*	5	7	4	6	4	4	8	6	5	4	6
SECURITY	6	5	11	13	12	11	14	20	20	20	27	10	23	10	19	29	16	26	20	20
Fix Immigration	3	2	3	2	2	3	4	5	12	11	17	3	16	4	10	19	7	18	13	10
National Security/Terrorism	3	3	3	4	4	3	5	3	5	5	7	3	5	2	5	7	5	5	4	6
Fight Crime/Law & Order	*	*	5	5	6	5	6	12	3	4	4	4	3	4	4	3	4	3	4	4
CORONAVIRUS	41	31	24	30	25	30	27	21	16	14	6	23	12	19	19	5	15	12	16	12
Stop Spread	22	15	13	17	17	21	17	15	11	10	5	15	8	11	15	4	10	10	11	9
Distribute Vaccine	*	*	*	*	*	*	10	7	5	4	2	8	3	8	4	2	6	3	5	4
HONESTY/INTEGRITY/D.C.	8	11	10	10	11	10	9	9	11	8	9	6	8	6	6	9	5	10	8	7
RE-EXAMINING 2020 ELEC.	*	*	*	*	*	*	*	*	*	4	9	1	3	1	2	9	3	6	3	5
DK/Refused	2	1	2	2	3	2	2	2	3	2	2	1	2	1	3	2	3	1	1	3

Current Opinion of the U.S. Economy

Time Series

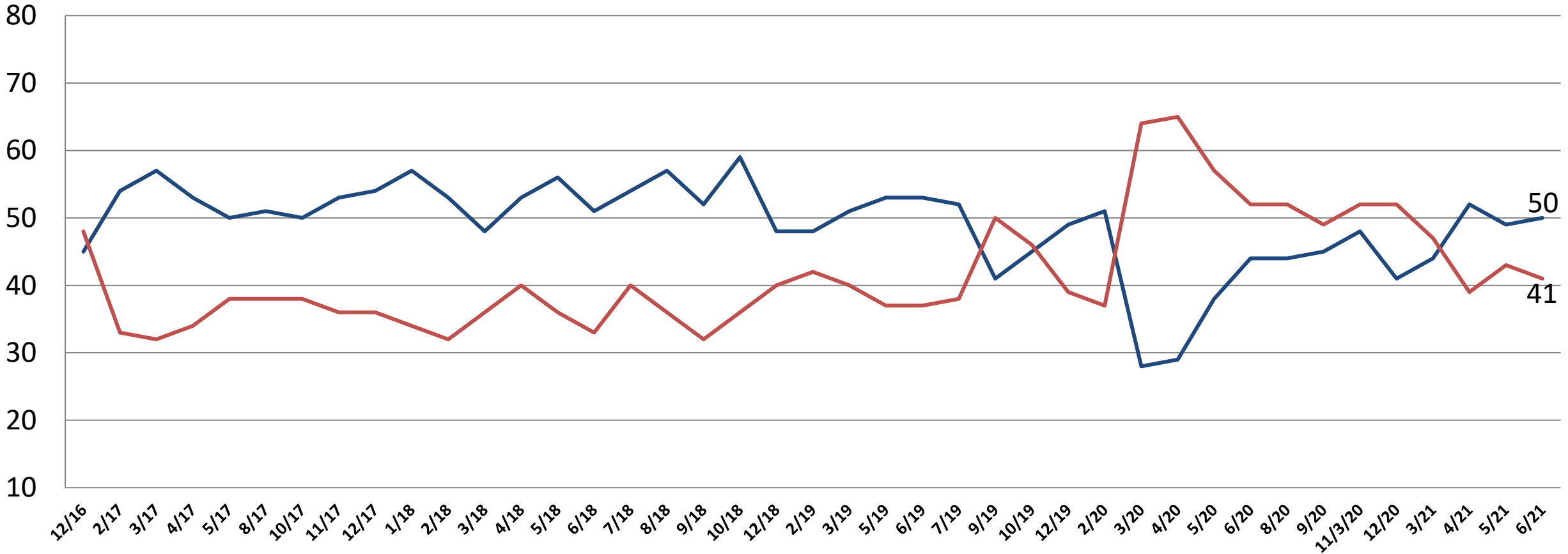


Current Opinion of the U.S. Economy

Time Series

— Getting Better

— Getting Worse



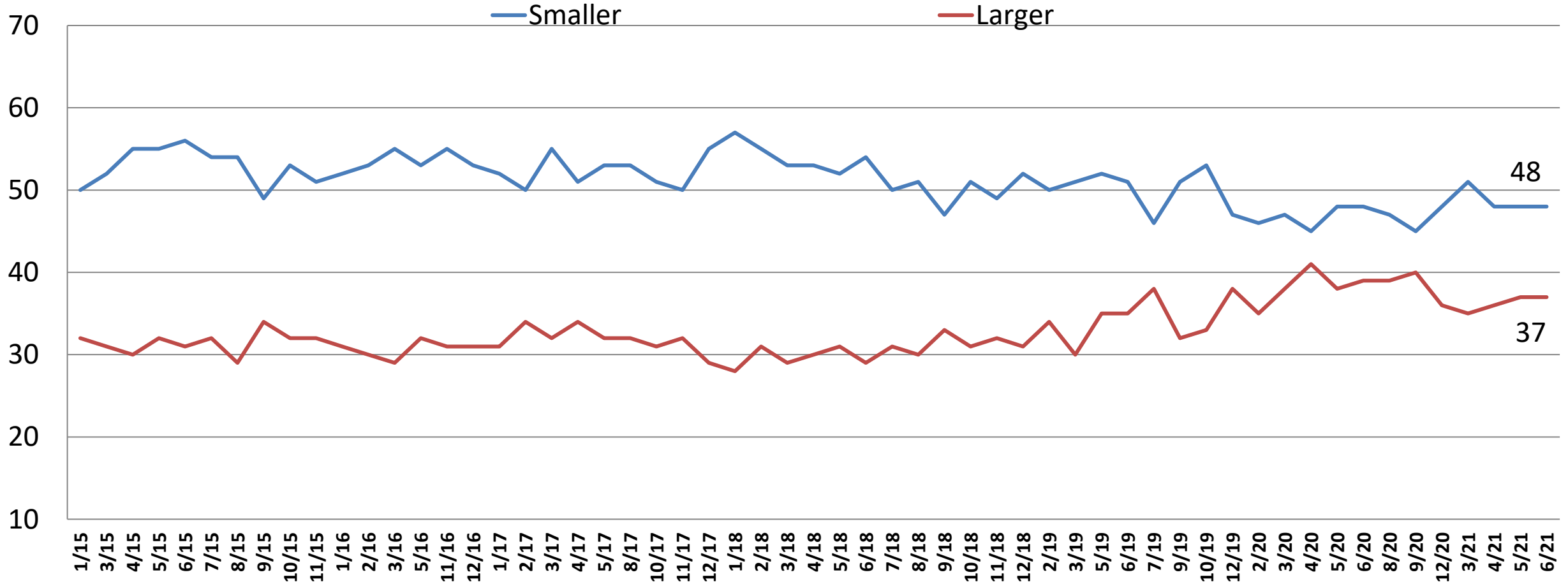
Current Opinion of the U.S. Economy

Time Series

	9/19	10/19	12/19	2/20	3/20	4/20	5/20	6/20	8/20	9/20	11/20	12/20	3/21	4/21	5/21	6/21	Rep	Dem	Ind	Lib	Mod	Con	Under 55	Over 55	Men	Women
NOT RECESSION	70	71	66	69	48	37	32	30	35	39	41	44	42	42	42	44	44	46	41	50	39	43	41	47	54	34
Getting Better	33	36	38	43	17	14	12	16	18	21	20	23	17	21	21	22	15	32	19	33	22	14	23	21	29	16
Getting Worse	37	35	28	27	30	24	20	15	17	18	21	21	24	21	21	21	29	14	22	17	17	29	18	26	25	18
RECESSION	21	21	23	19	44	56	62	65	60	55	59	49	49	50	50	48	51	45	48	42	51	50	49	46	41	54
Getting Better	8	9	12	9	11	15	25	29	26	25	28	18	26	31	28	28	19	36	29	32	35	19	33	21	25	31
Getting Worse	14	11	11	11	34	41	37	37	34	31	31	31	23	18	22	20	32	9	19	11	17	30	16	25	16	24
D.K./REFUSED	9	9	12	12	9	7	6	4	5	6	0	8	9	8	8	8	6	9	11	8	9	7	10	6	5	12
GETTING BETTER	41	45	49	52	28	29	38	44	44	45	48	41	44	52	49	50	34	68	48	64	57	34	56	42	54	47
GETTING WORSE	50	46	39	39	64	65	57	52	52	49	52	52	47	39	43	41	61	23	41	28	34	59	34	52	41	42
D.K./REFUSED	9	9	12	12	9	7	6	4	5	6	0	8	9	8	8	8	6	9	11	8	9	7	10	6	5	12
Net Diff.	-10	-0.6	10	13	-36	-37	-19	-7.7	-25	-3.5	-3	-11	-3.8	13	6	9	-27	45	8	36	24	-26	22	-9	13	5

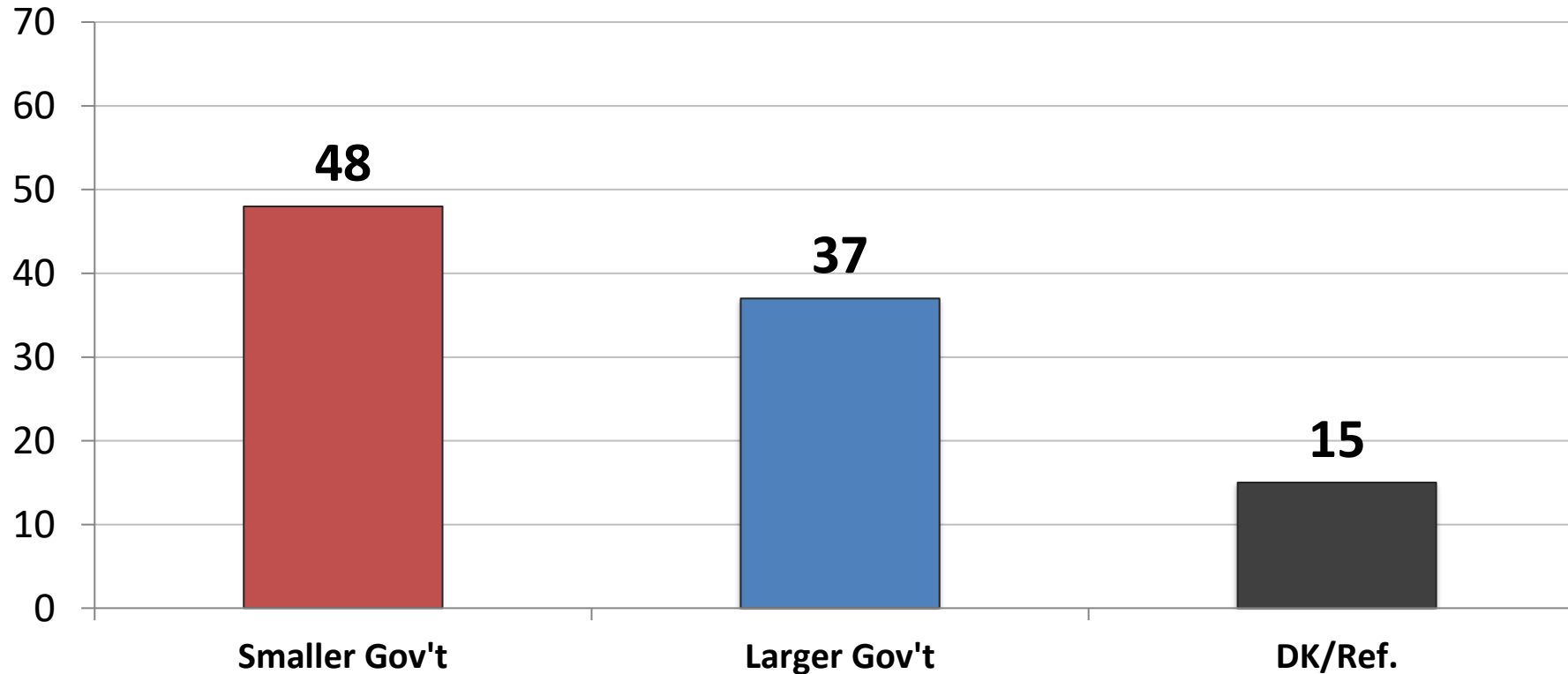
Would you say you most favor a smaller government with fewer services or a larger government with many services?

Time Series



Would you say you most favor a smaller government with fewer services or a larger government with many services?

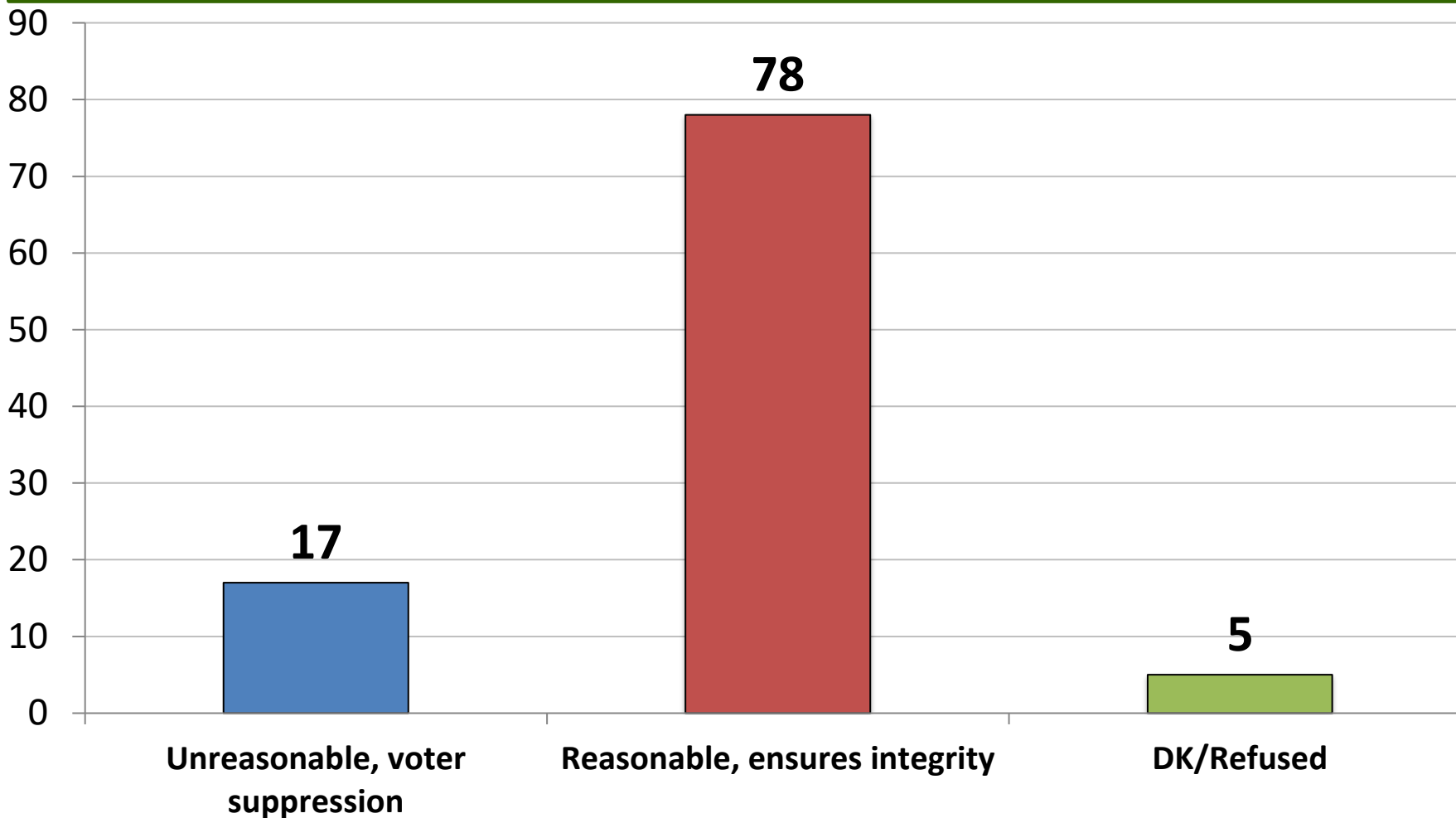
	3/21	4/21	5/21	6/21
Smaller Gov't	51	48	48	48
Larger Gov't	35	36	37	37



	Smaller	Larger
East	43	42
Midwest	49	34
South	49	37
West	50	37
Vote Trump 2020	70	17
Vote Biden 2020	28	56
Vote Cong. – GOP	70	20
Vote Cong. – DEM	27	57
Vote Cong. – UND	31	28
Approve Biden	28	56
Disapprove Biden	73	14
Republican	69	19
Democrat	28	57
Independent	47	34
Liberal	28	59
Moderate	39	40
Conservative	72	17
White	55	34
African- American	24	48
Hispanic	39	44
Under 55	35	48
Over 55	66	23
Married	51	36
Single	38	44
Men	52	41
Women	44	34
Live in Urban Area	38	50
Live in Suburban Area	53	33
Live in Rural Area	53	27

Thinking about election security, which of the following statements do you most agree with?

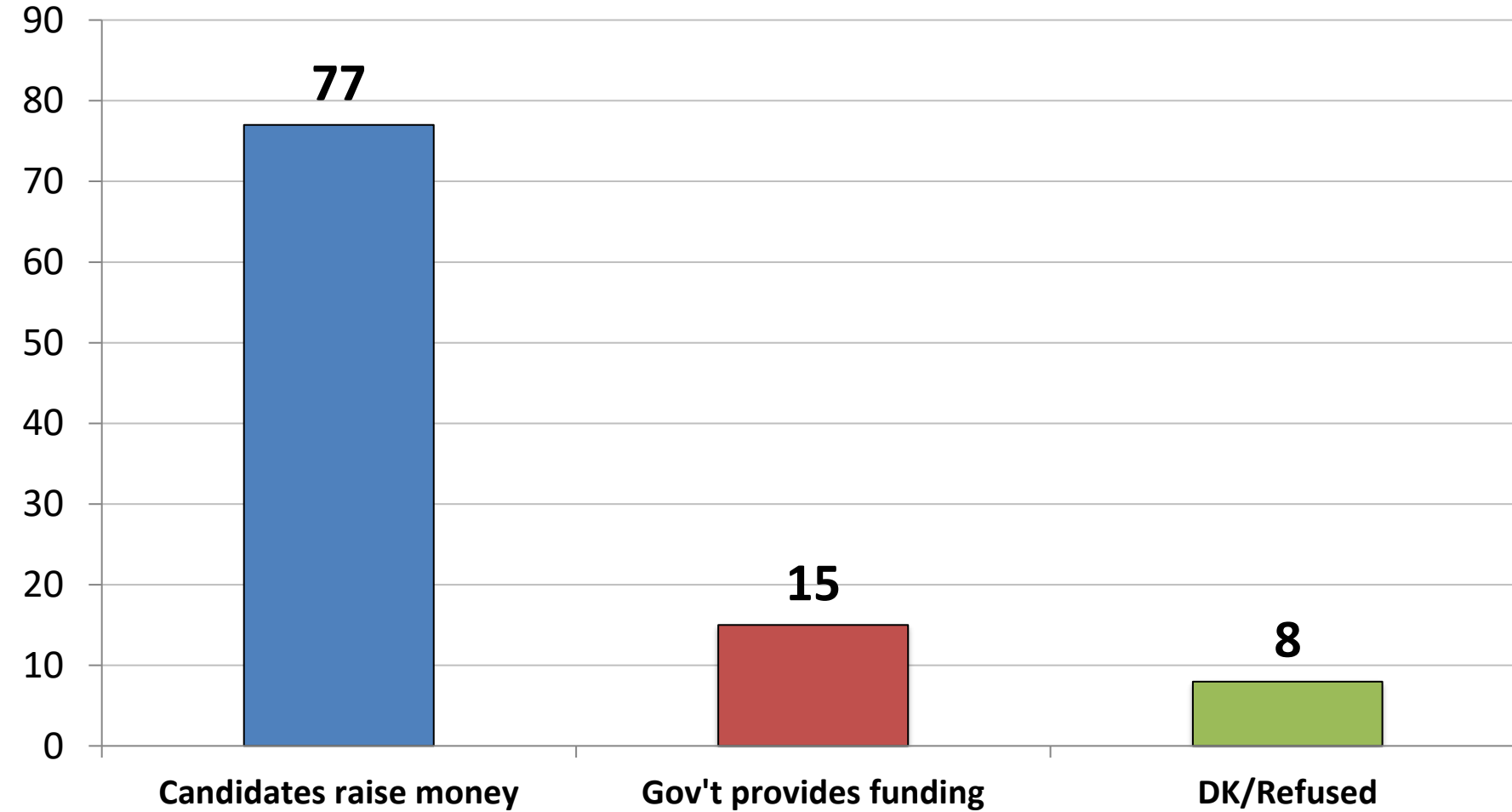
- 1. Asking voters to present a valid photo ID when voting is unreasonable and is a form of voter suppression. *OR*,
- 2. Asking voters to present a valid photo ID when voting is reasonable and is a valid method of ensuring election integrity.



	Unreas- onable	Reason- able
East	18	77
Midwest	15	79
South	17	79
West	18	76
Vote Trump 2020	8	89
Vote Biden 2020	25	68
Vote Cong. – GOP	9	89
Vote Cong. – DEM	27	67
Vote Cong.– UND	13	81
Approve Biden	26	68
Disapprove Biden	7	91
Republican	7	89
Democrat	28	66
Independent	16	79
Liberal	35	60
Moderate	15	79
Conservative	5	92
White	15	81
African- American	21	72
Hispanic	21	73
Under 55	23	70
Over 55	10	90
Married	17	80
Single	22	70
Men	19	79
Women	16	78
Live in Urban Area	22	73
Live in Suburban Area	16	80
Live in Rural Area	12	84

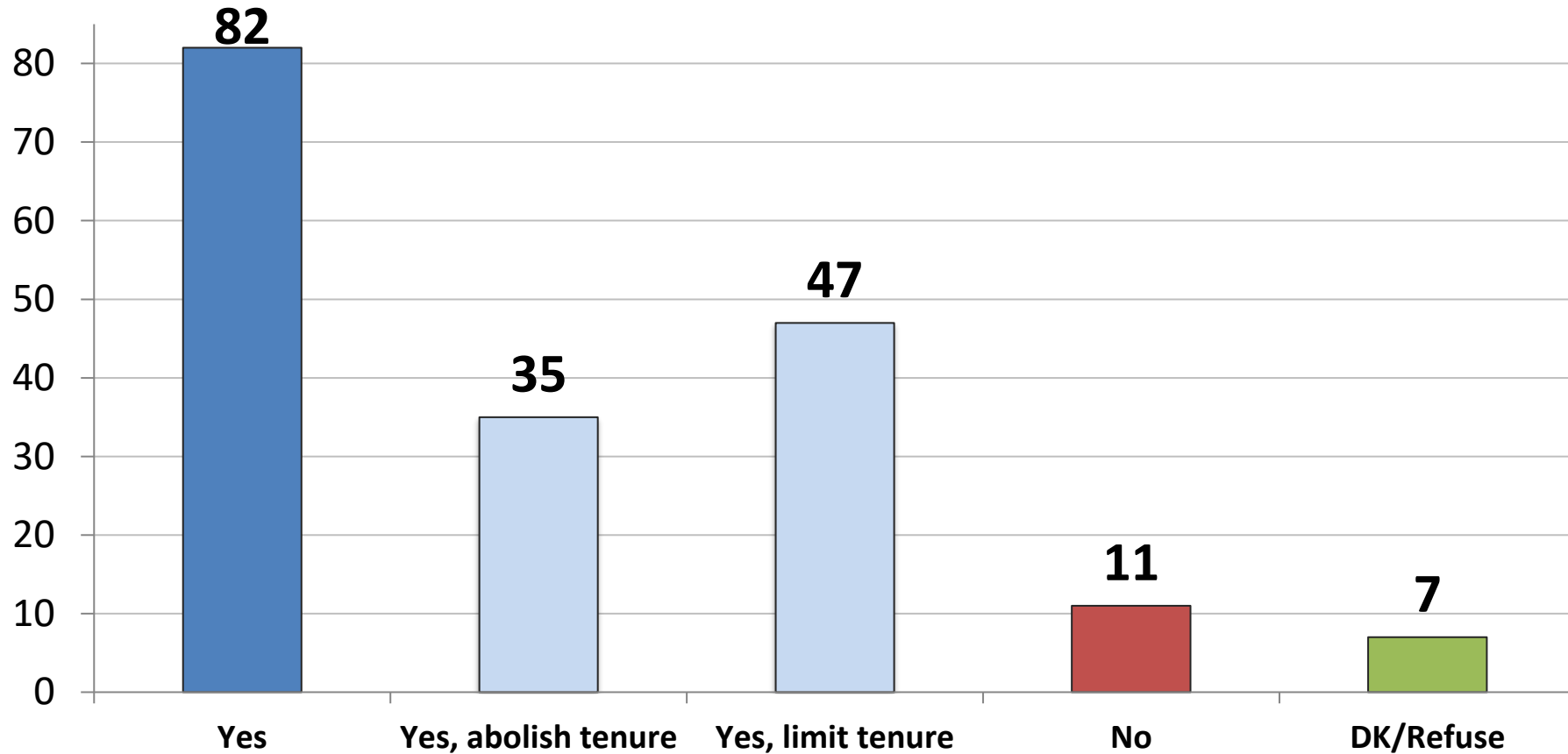
When it comes to paying for political campaigns, which of the following statements do you most agree with?

1. Candidates running for office should pay for their campaigns with money they raise on their own. **OR,**
2. The federal government should provide politicians with the majority of the money needed to fund political campaigns.



	Cand.	Fed.
East	71	21
Midwest	75	13
South	83	12
West	73	18
Vote Trump 2020	88	6
Vote Biden 2020	68	23
Vote Cong. – GOP	87	8
Vote Cong. – DEM	66	24
Vote Cong.– UND	82	6
Approve Biden	69	23
Disapprove Biden	88	6
Republican	89	6
Democrat	69	22
Independent	72	18
Liberal	68	25
Moderate	75	15
Conservative	86	7
White	81	12
African- American	68	21
Hispanic	72	20
Under 55	70	20
Over 55	86	9
Married	80	14
Single	69	21
Men	77	18
Women	77	13
Live in Urban Area	74	18
Live in Suburban Area	78	15
Live in Rural Area	80	12

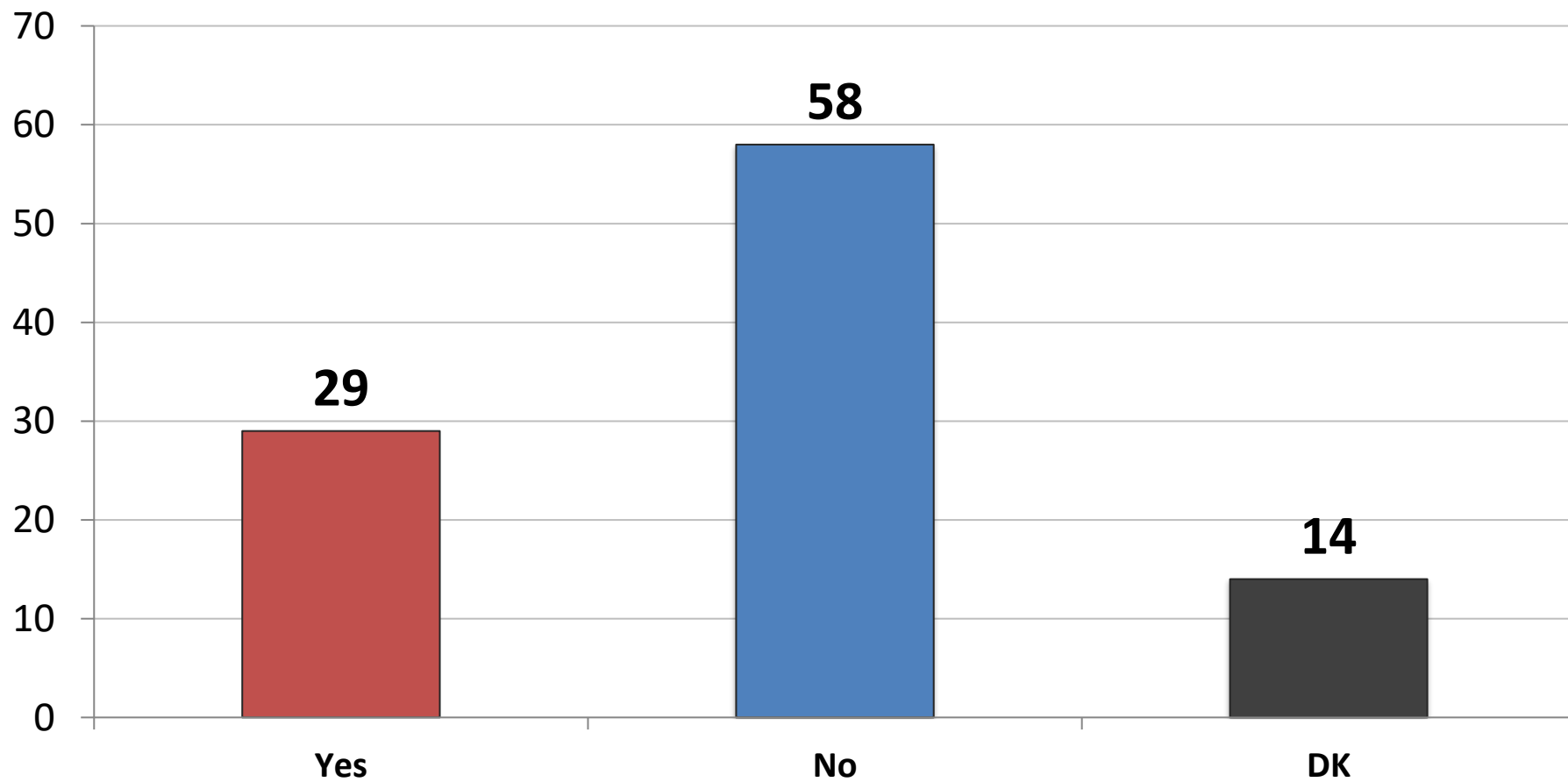
Most colleges and universities give their professors lifetime employment, called tenure, which means they cannot ever be fired. This effectively gives them special status not found in most workplaces with a job for life. Do you think colleges and universities should abolish tenure or significantly limit this lifetime employment with tenure for professors that needs to be renewed every few years?



	Yes	No
East	84	11
Midwest	82	8
South	82	12
West	80	12
Vote Trump 2020	86	8
Vote Biden 2020	78	14
Vote Cong. – GOP	86	8
Vote Cong. – DEM	79	13
Vote Cong.– UND	70	19
Approve Biden	78	14
Disapprove Biden	87	7
Republican	85	8
Democrat	80	13
Independent	79	12
Liberal	82	13
Moderate	77	12
Conservative	86	8
White	84	10
African- American	69	17
Hispanic	82	11
Under 55	77	13
Over 55	88	8
Married	87	7
Single	72	19
Men	88	10
Women	76	12
Live in Urban Area	81	11
Live in Suburban Area	83	11
Live in Rural Area	80	12

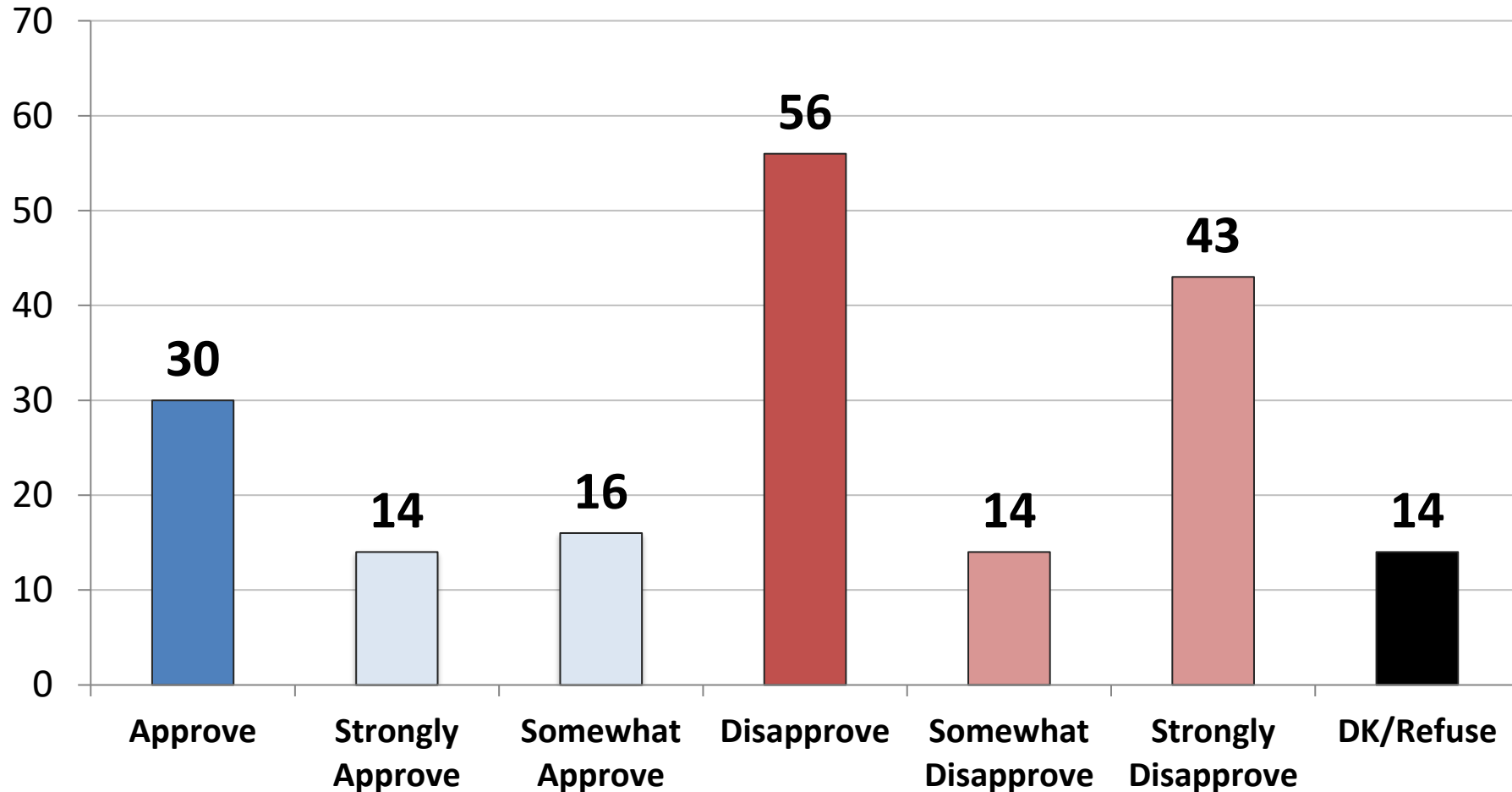
Recently, President Biden criticized British Prime Minister Boris Johnson for pursuing the United Kingdom's break with the European Union which was passed by British voters in a national referendum. President Biden feels Britain leaving the European Union endangers the Irish Peace Agreement, however, the United Kingdom still supports the Irish peace deal.

In your own personal opinion, should the American President be interjecting his opinions in this British issue?



	<u>Yes</u>	<u>No</u>
East	37	50
Midwest	26	56
South	25	65
West	32	54
Vote Trump 2020	11	78
Vote Biden 2020	45	39
Vote Cong. – GOP	15	75
Vote Cong. – DEM	45	38
Vote Cong. – UND	16	67
Approve Biden	46	39
Disapprove Biden	8	82
Republican	14	75
Democrat	48	36
Independent	22	64
Liberal	53	35
Moderate	26	56
Conservative	12	77
White	25	65
African- American	33	39
Hispanic	42	46
Under 55	40	43
Over 55	13	78
Married	29	59
Single	35	48
Men	34	58
Women	24	57
Live in Urban Area	45	41
Live in Suburban Area	23	64
Live in Rural Area	16	67

Do you approve or disapprove of any decision by Congress to rejoin the Iran Nuclear Deal, or any similar deal, which will give Iran billions of dollars in sanction relief to subsidize terrorist activities, bar any American inspectors in their nuclear sites, and allow Iran to continue uranium enrichment, which all but assures Iran could develop nuclear weapons?

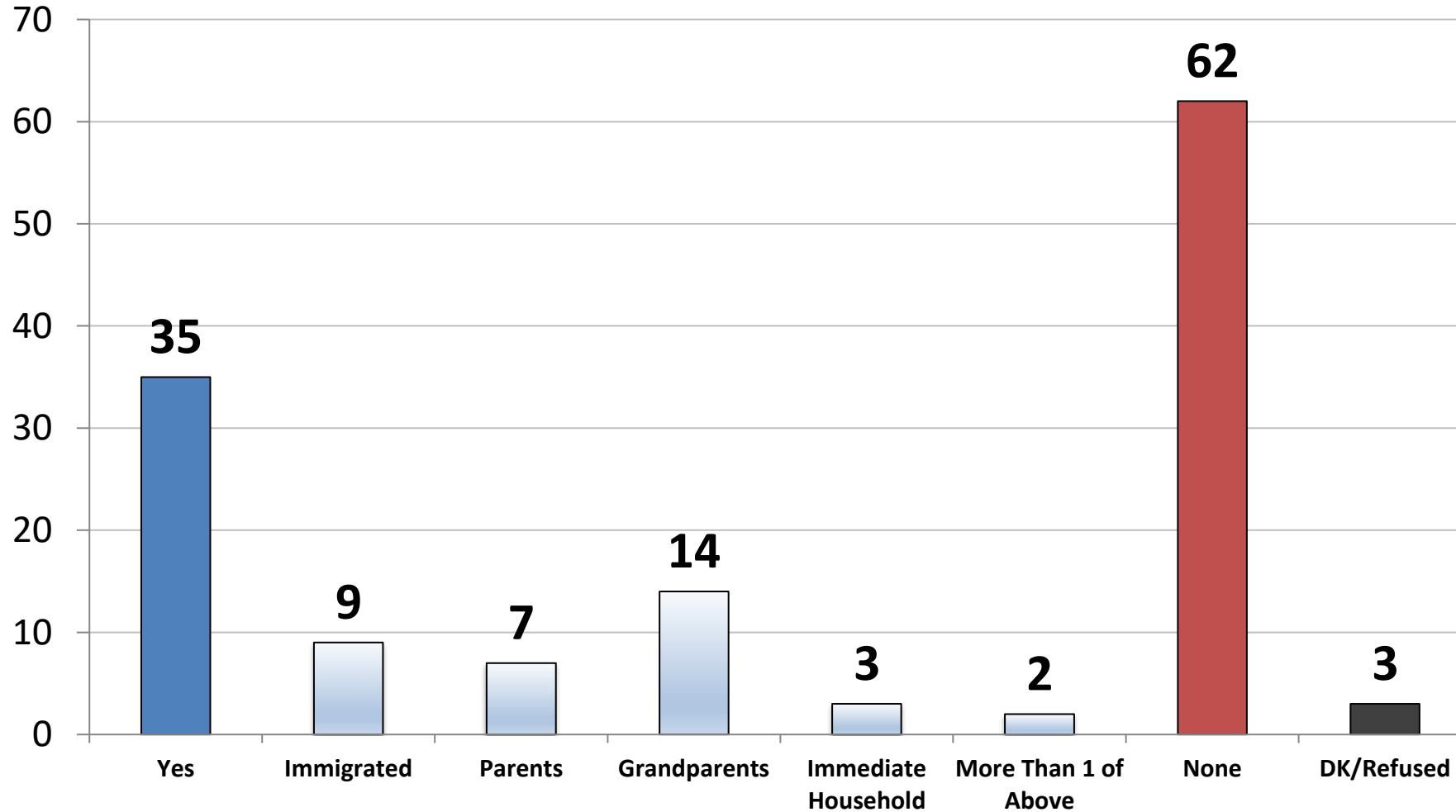


	Approve	Disapp.
East	40	43
Midwest	27	61
South	28	62
West	29	53
Vote Trump 2020	12	77
Vote Biden 2020	46	38
Vote Cong. – GOP	16	75
Vote Cong. – DEM	47	37
Vote Cong.– UND	18	55
Approve Biden	49	35
Disapprove Biden	7	84
Republican	15	75
Democrat	49	35
Independent	25	61
Liberal	52	34
Moderate	31	50
Conservative	12	80
White	26	63
African- American	37	38
Hispanic	40	45
Under 55	41	41
Over 55	15	78
Married	32	56
Single	36	47
Men	41	53
Women	20	59
Live in Urban Area	44	39
Live in Suburban Area	27	61
Live in Rural Area	15	76

From the following list, which social media networks do you use?

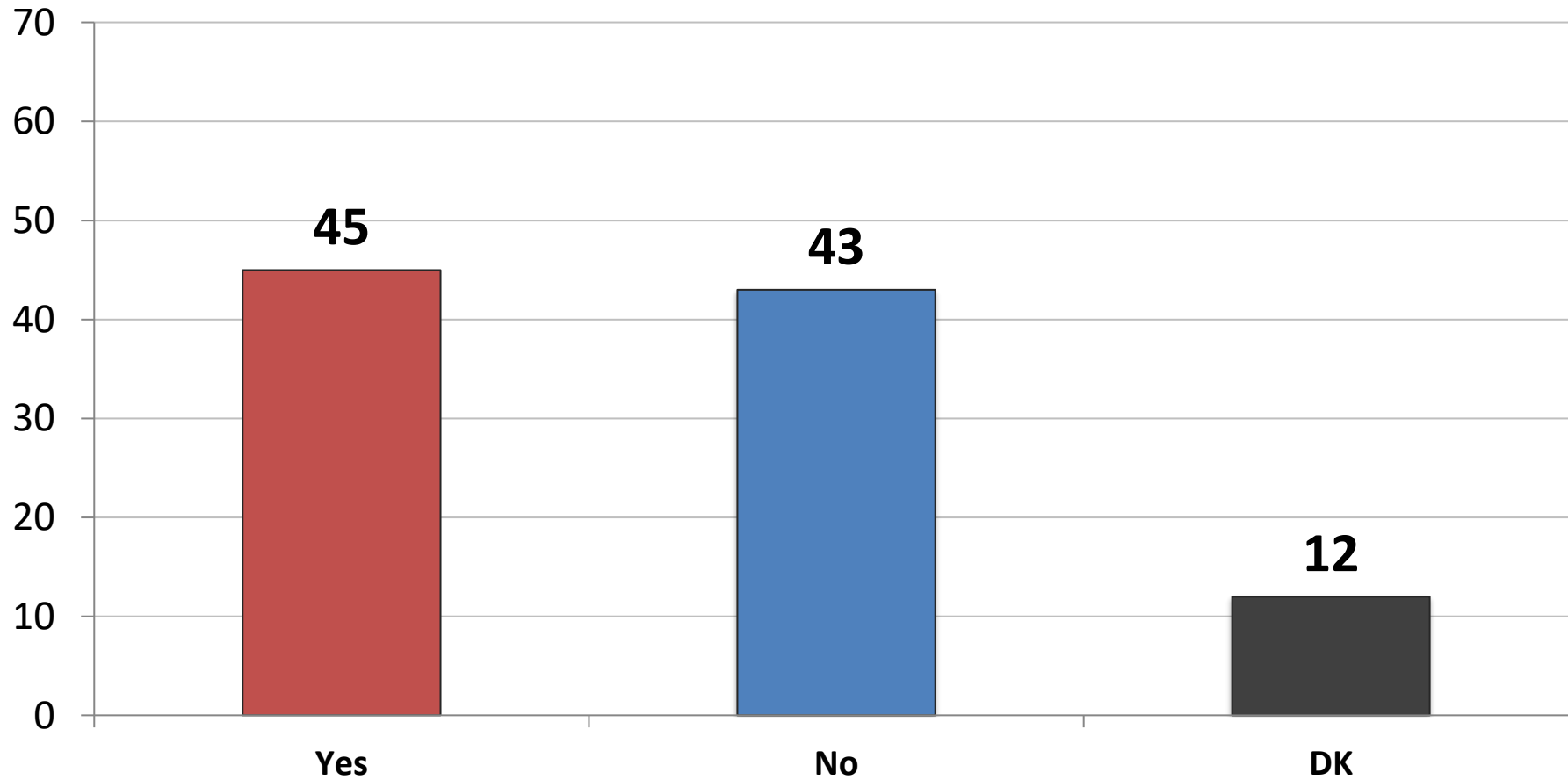
	<u>Total</u>	<u>Rep</u>	<u>Dem</u>	<u>Ind</u>	<u>Lib</u>	<u>Mod</u>	<u>Cons</u>	<u>Under 55</u>	<u>Over 55</u>	<u>Men</u>	<u>Women</u>
Facebook	74	75	76	72	75	75	73	76	72	71	77
YouTube	66	60	77	59	75	63	61	75	54	67	66
Instagram	48	40	61	39	62	47	37	63	26	45	50
Twitter	37	29	49	32	54	32	29	51	18	42	33
Pinterest	32	36	31	27	32	27	36	36	26	19	43
Linked-In	27	26	30	23	33	24	25	30	23	32	21
Snapchat	25	19	35	20	35	24	18	37	8	19	31
WhatsApp	22	16	33	15	34	21	14	31	10	29	16
TIKTOK	22	13	30	21	33	22	12	32	8	17	26
Reddit	15	10	19	15	22	13	10	21	6	15	14
Tumblr	8	4	12	7	16	6	3	12	2	7	8
Telegram	7	5	12	4	10	8	3	11	2	10	4
Parler	4	7	2	2	2	3	6	3	5	5	2
Gab.com	3	2	3	2	4	1	3	3	2	3	2
Rumble	2	3	2	1	2	1	3	3	2	3	2
Other	1	1	1	3	1	0	2	1	2	1	1
CloutHub	1	1	2	1	2	1	1	2	1	1	1
None	7	8	4	9	2	8	9	2	14	8	6

Are you, your parents or grandparents or someone in your immediate household an immigrant to the United States?



	Yes	None
East	49	49
Midwest	22	74
South	32	66
West	42	54
Vote Trump 2020	33	65
Vote Biden 2020	37	61
Vote Cong. – GOP	34	64
Vote Cong. – DEM	37	60
Vote Cong.– UND	31	64
Approve Biden	38	59
Disapprove Biden	31	67
Republican	34	64
Democrat	38	59
Independent	33	65
Liberal	45	53
Moderate	32	66
Conservative	31	66
White	32	66
African- American	9	87
Hispanic	66	31
Under 55	38	58
Over 55	31	68
Immigrant Household	40	58
Not Immigrant Household	32	65
Men	42	57
Women	29	67
Live in Urban Area	39	58
Live in Suburban Area	37	61
Live in Rural Area	23	74

When you file your taxes, do you itemize your deductions?



	<u>Yes</u>	<u>No</u>
East	51	35
Midwest	39	49
South	44	48
West	46	36
Vote Trump 2020	42	49
Vote Biden 2020	46	39
Vote Cong. – GOP	45	46
Vote Cong. – DEM	46	40
Vote Cong.– UND	32	41
Approve Biden	48	38
Disapprove Biden	41	50
Republican	45	46
Democrat	49	37
Independent	38	48
Liberal	51	36
Moderate	42	41
Conservative	42	51
White	44	45
African- American	44	47
Hispanic	50	30
Under 55	48	34
Over 55	39	56
Married	54	39
Single	34	42
Men	50	42
Women	40	45
Live in Urban Area	53	37
Live in Suburban Area	42	45
Live in Rural Area	37	49

Voter Profile: n= 1,000

	Total		Total		Total
<u>Party:</u>		<u>Age:</u>		<u>Area</u>	
Republican	36	18-29	17	Urban	32
Democrat	37	30-40	16	Suburban	51
Ind./Other/D.K./Ref.	27	41-55	25	Rural	17
<u>Gender:</u>		56-65	20	<u>Region</u>	
Male	48	Over 65	22	New England	5
Female	52	<u>Race:</u>		Middle Atlantic	13
		White	68	East North Central	16
		African American/Black	13	West North Central	7
		Hispanic	13	South Atlantic	22
		Asian	4	East South Central	6
				West South Central	10
				Mountain	8
				Pacific	14



McLaughlin & Associates

New York Office

566 South Route 303

Blauvelt, NY 10913

845-365-2000

D.C./Virginia Office

919 Prince Street

Alexandria, VA 22314

703-518-4445

www.mclaughlinonline.com