



McLaughlin & Associates

National Survey Results

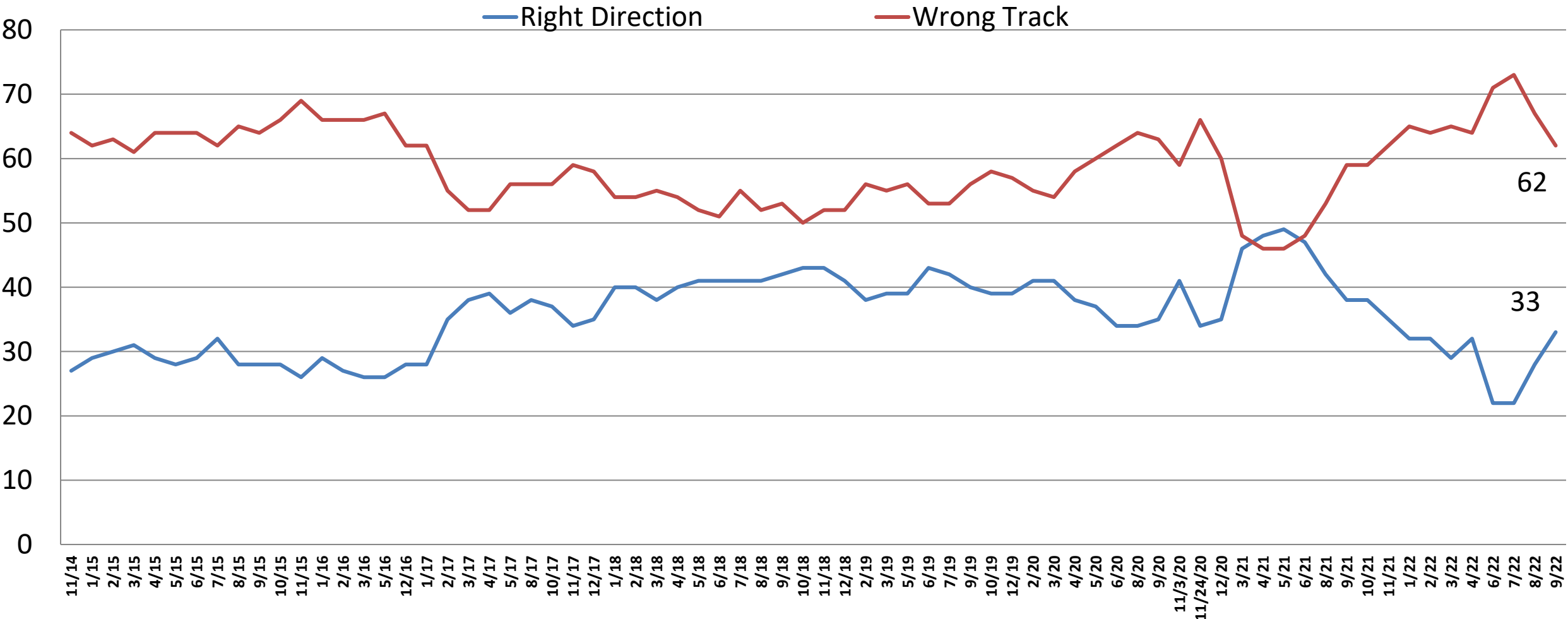
General Election Likely Voters

Political Environment, Trends & Analysis

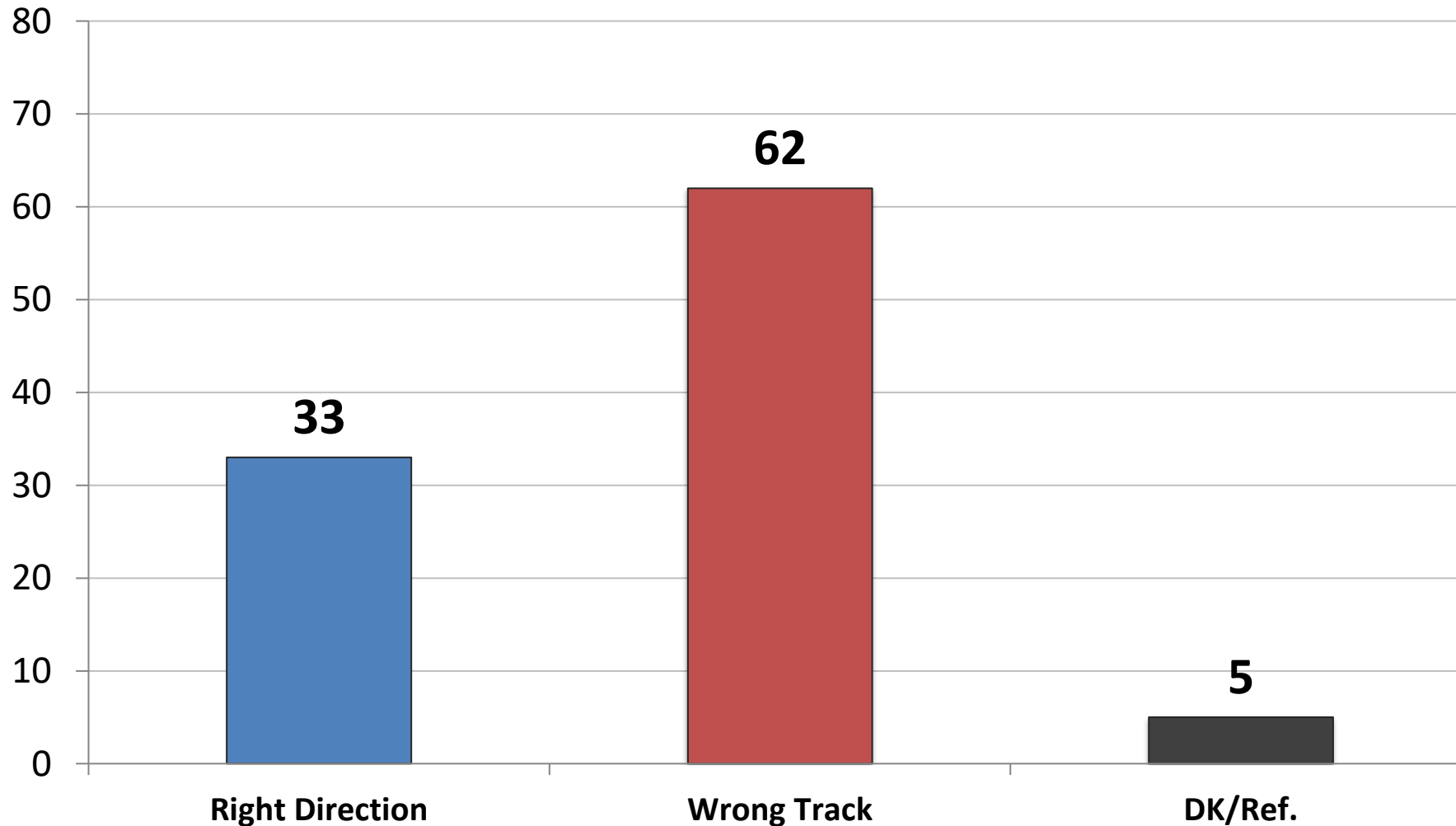
- **Field Dates: September 17th to 22nd**
- **www.mclaughlinonline.com**

Direction: United States

Time Series

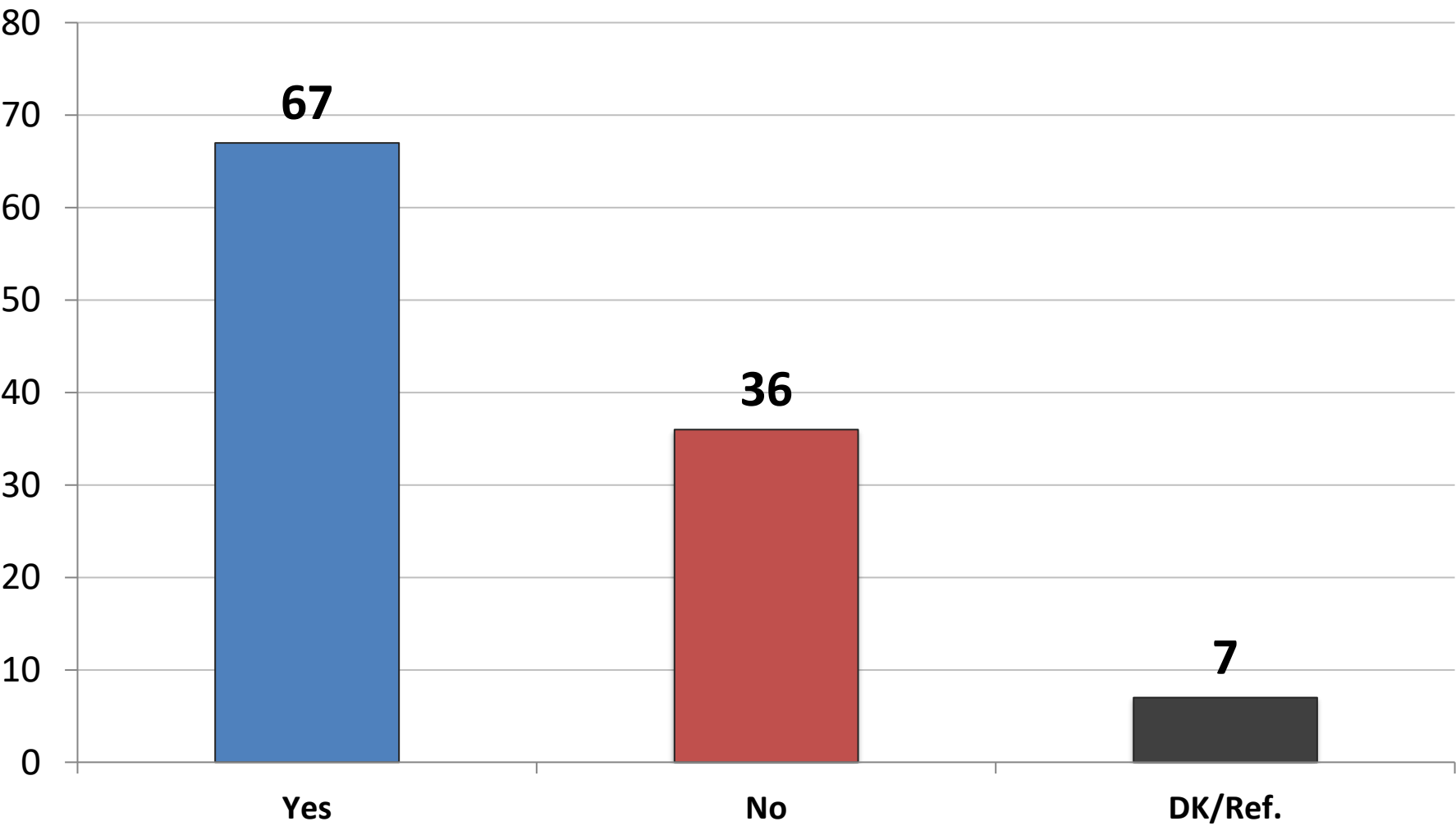


Direction: *United States*



	R	W
East	38	56
Midwest	23	71
South	32	64
West	39	56
Vote Trump 2020	11	86
Vote Biden 2020	52	40
Vote Cong. – GOP	16	83
Vote Cong. – DEM	55	38
Vote Cong. – UND	9	74
Approve Biden	62	31
Disapprove Biden	4	92
Republican	16	82
Democrat	57	35
Independent	21	74
Liberal	58	37
Moderate	30	64
Conservative	15	81
White	28	69
African- American	50	40
Hispanic	44	49
Under 55	37	56
Over 55	26	71
Married	34	63
Single	32	60
Men	33	64
Women	32	61
Live in Urban Area	48	44
Live in Suburban Area	26	71
Live in Rural Area	24	71

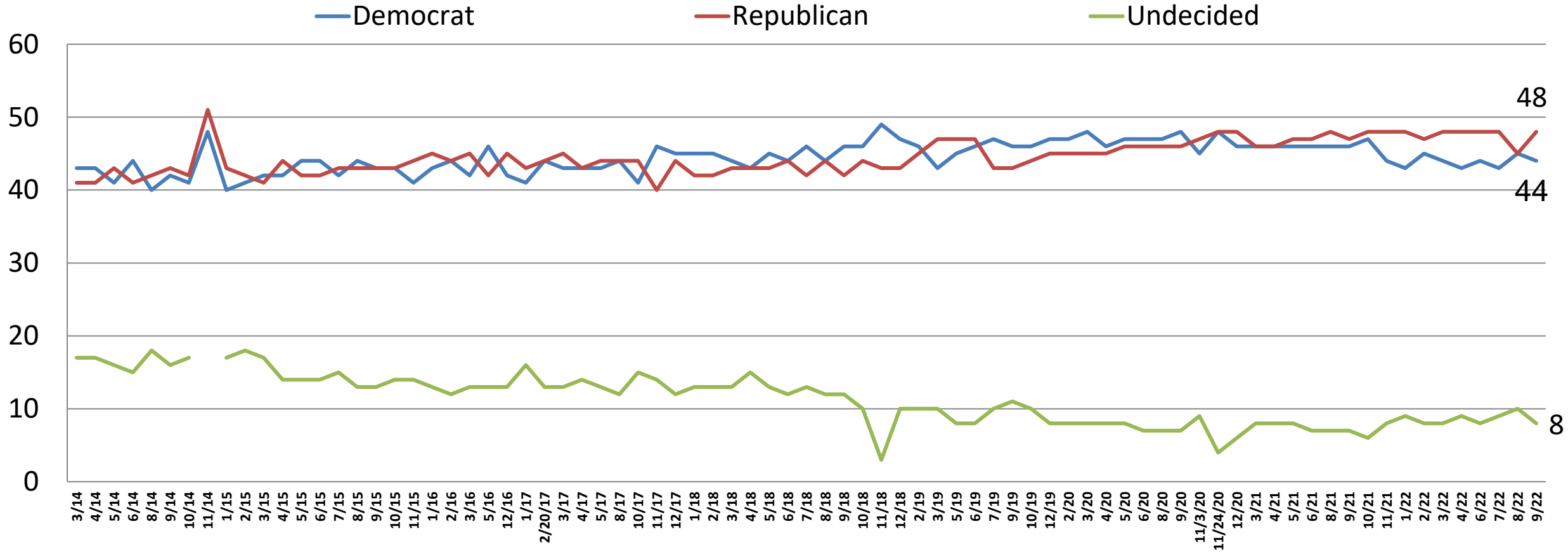
Do you think it's President Joe Biden's fault that the United States is on the wrong track?
(n=623)



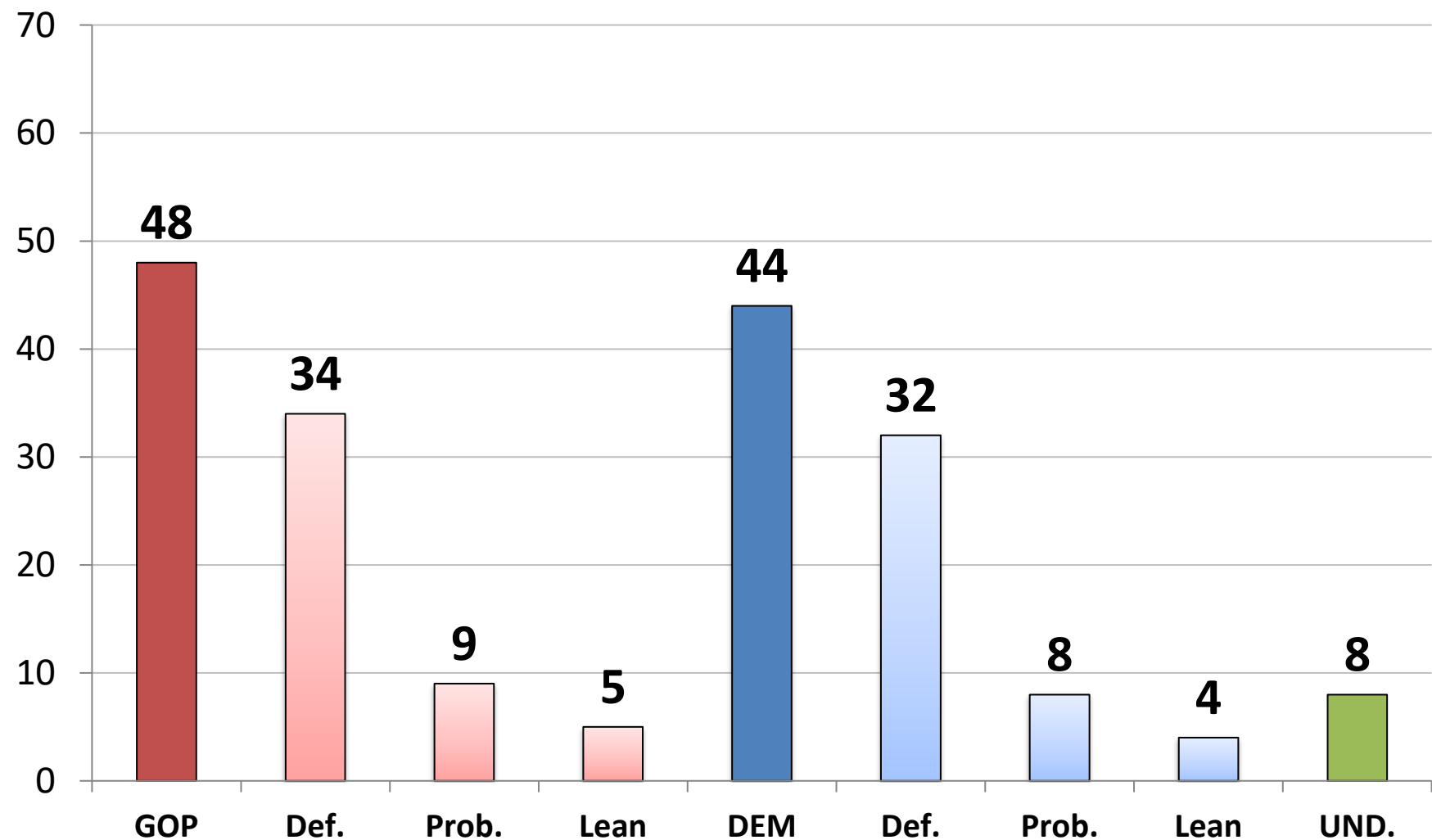
	Y	N
East	58	29
Midwest	73	18
South	70	24
West	62	35
Vote Trump 2020	92	4
Vote Biden 2020	19	68
Vote Cong. – GOP	91	6
Vote Cong. – DEM	15	74
Vote Cong.– UND	53	20
Approve Biden	13	80
Disapprove Biden	86	8
Republican	92	4
Democrat	21	68
Independent	60	30
Liberal	24	68
Moderate	60	30
Conservative	88	7
White	73	21
African- American	33	50
Hispanic	55	37
Under 55	61	28
Over 55	73	23
Married	74	22
Single	58	31
Men	75	22
Women	59	29
Live in Urban Area	56	34
Live in Suburban Area	68	25
Live in Rural Area	74	20

Generic Ballot: U.S. Congress

Time Series



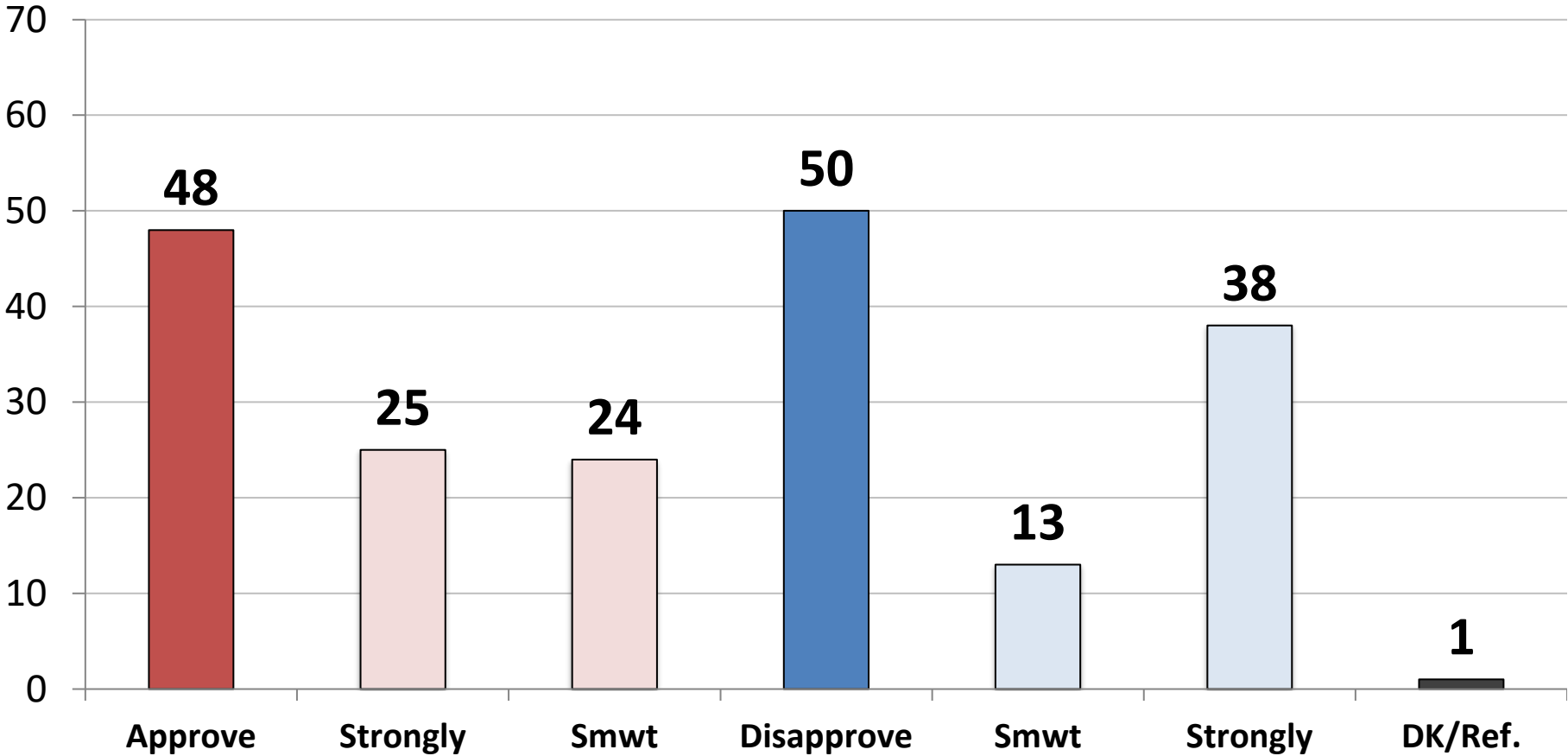
Generic Ballot: *U.S. Congress*



	GOP	DEM.	UND.
East	37	50	13
Midwest	55	39	6
South	51	42	7
West	45	48	7
Vote Trump 2020	90	3	7
Vote Biden 2020	10	82	8
Vote Cong. – GOP	100	0	0
Vote Cong. – DEM	0	100	0
Vote Cong.– UND	0	0	100
Approve Biden	16	81	4
Disapprove Biden	79	10	11
Republican	96	3	2
Democrat	7	90	3
Independent	40	37	24
Liberal	21	76	2
Moderate	36	49	15
Conservative	80	14	6
White	58	35	7
African- American	16	80	4
Hispanic	30	55	15
Under 55	45	45	10
Over 55	51	44	5
Married	53	42	5
Single	44	45	11
Men	59	35	6
Women	37	53	10
Live in Urban Area	37	56	8
Live in Suburban Area	52	39	9
Live in Rural Area	55	39	6

Job Rating: *Joe Biden*

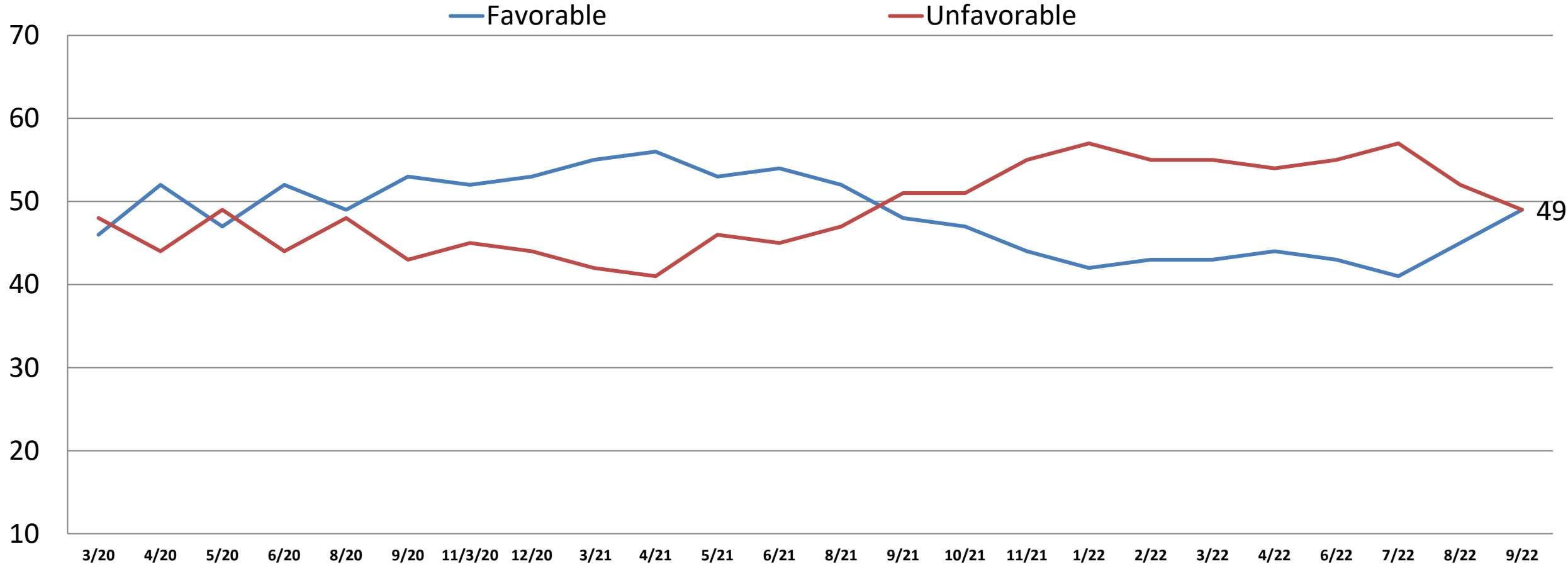
	3/21	4/21	5/21	6/21	8/21	9/21	10/21	11/21	1/22	2/22	3/22	4/22	6/22	7/22	8/22	9/22
Approve	55	58	56	55	54	47	45	42	41	41	41	41	41	39	43	48
Disapprove	40	41	43	44	45	52	54	56	57	57	57	57	57	60	55	50



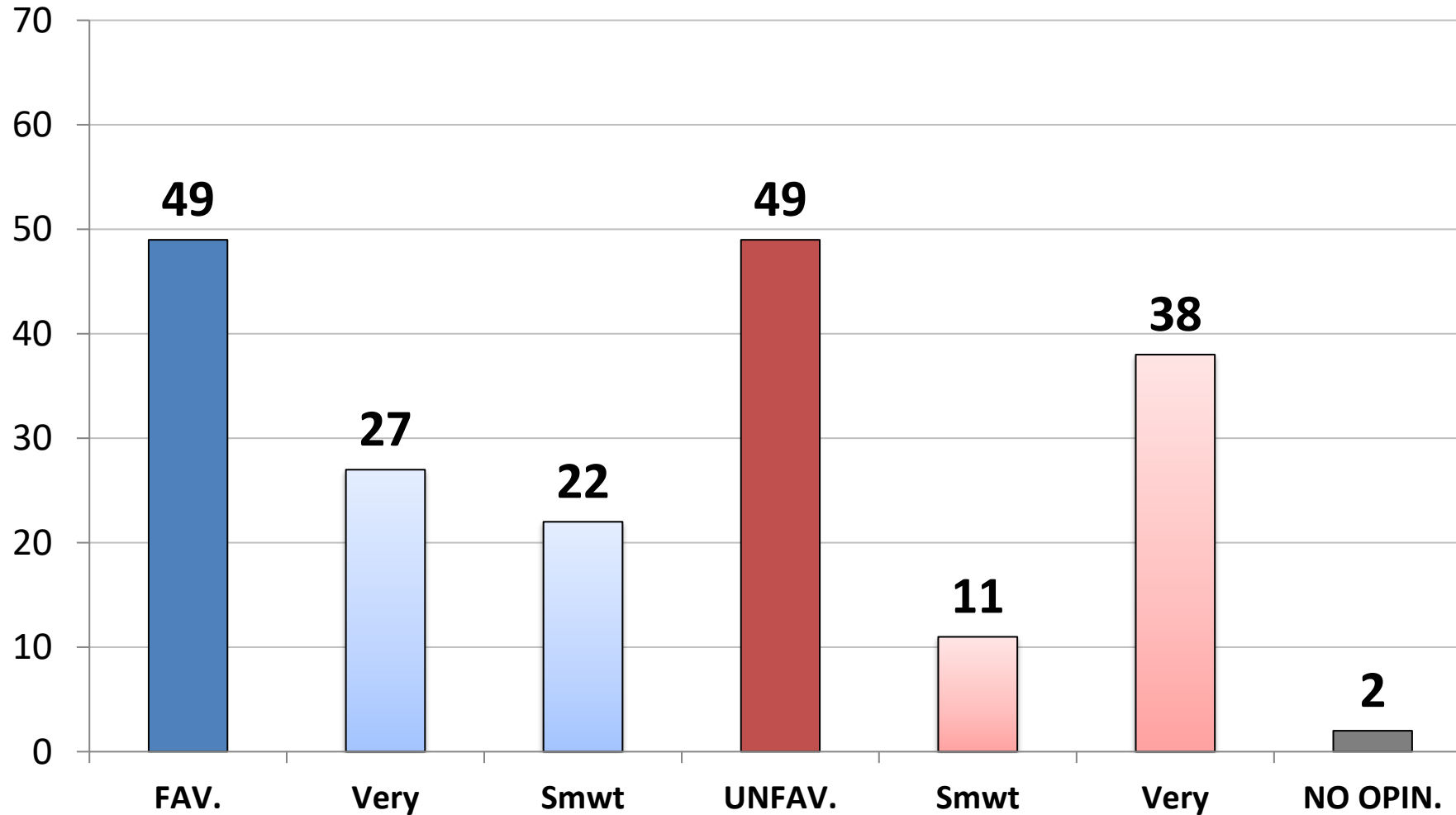
	App.	Disapp.
East	51	48
Midwest	40	60
South	49	49
West	54	45
Vote Trump 2020	11	89
Vote Biden 2020	83	15
Vote Cong. – GOP	16	84
Vote Cong. – DEM	88	11
Vote Cong.– UND	23	68
Approve Biden	100	0
Disapprove Biden	0	100
Republican	16	84
Democrat	86	13
Independent	41	57
Liberal	82	17
Moderate	50	48
Conservative	21	78
White	40	59
African- American	78	18
Hispanic	61	36
Under 55	53	45
Over 55	42	58
Married	47	52
Single	50	48
Men	42	56
Women	54	45
Live in Urban Area	63	35
Live in Suburban Area	43	56
Live in Rural Area	39	61

Opinion: Joe Biden

Time Series



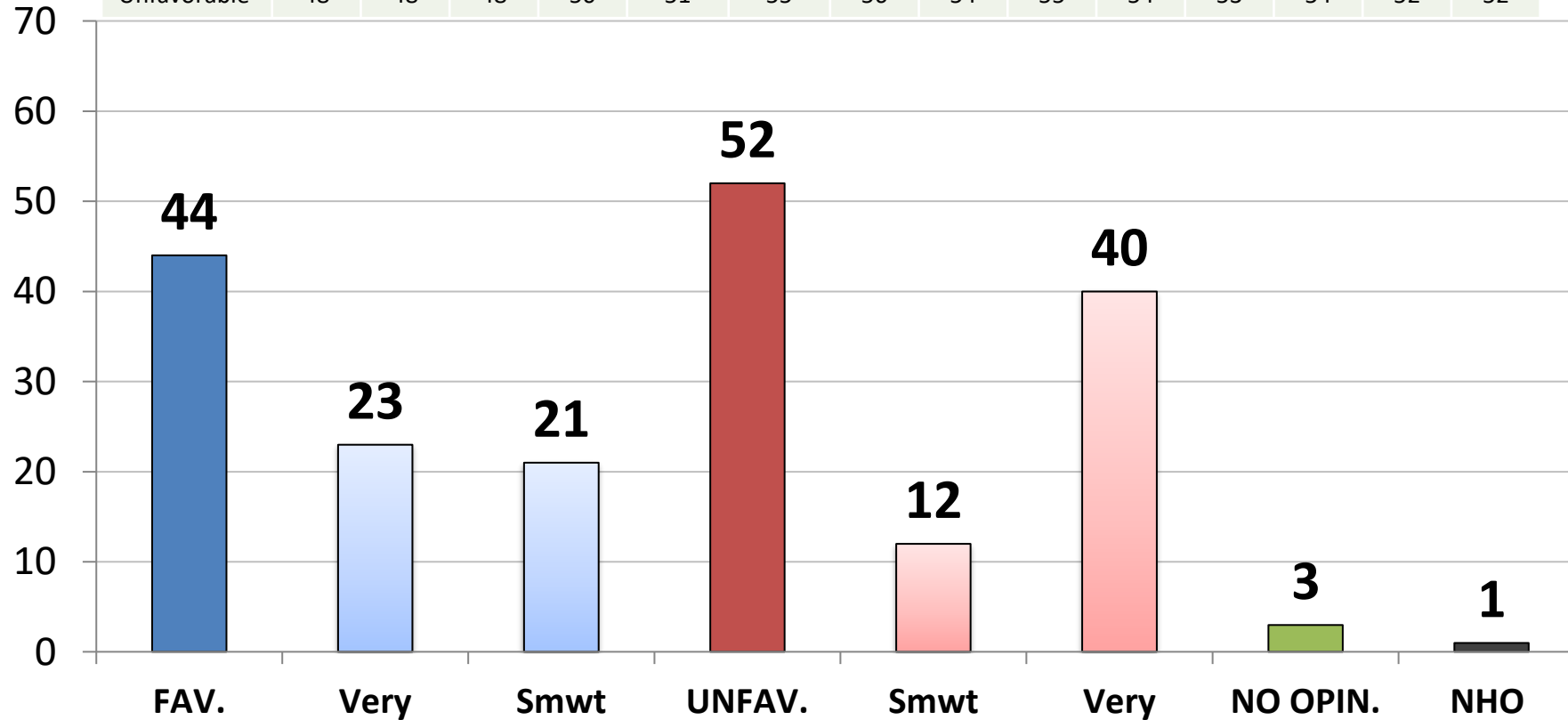
Opinion: *Joe Biden*



	Fav.	Unfav.
East	51	43
Midwest	39	60
South	49	50
West	54	44
Vote Trump 2020	9	89
Vote Biden 2020	85	13
Vote Cong. – GOP	13	85
Vote Cong. – DEM	91	9
Vote Cong.– UND	28	61
Approve Biden	92	7
Disapprove Biden	7	91
Republican	14	84
Democrat	88	11
Independent	42	54
Liberal	81	15
Moderate	51	47
Conservative	21	78
White	39	59
African- American	81	16
Hispanic	63	34
Under 55	52	45
Over 55	44	56
Married	47	52
Single	50	46
Men	41	57
Women	56	42
Live in Urban Area	65	32
Live in Suburban Area	43	55
Live in Rural Area	39	61

Opinion: *Kamala Harris*

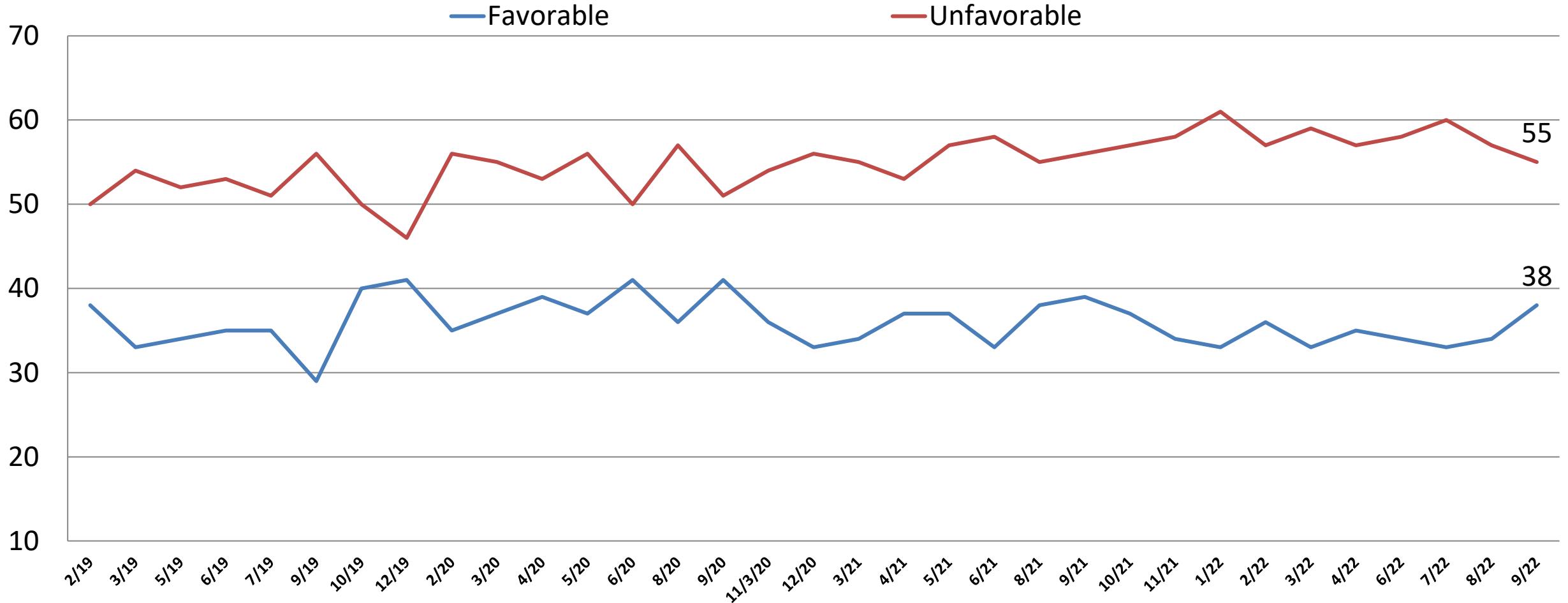
	5/21	6/21	8/21	9/21	10/21	11/21	1/22	2/22	3/22	4/22	6/22	7/22	8/22	9/22
Favorable	47	47	47	46	44	40	39	40	40	39	40	39	40	44
Unfavorable	48	48	48	50	51	55	56	54	55	54	53	54	52	52



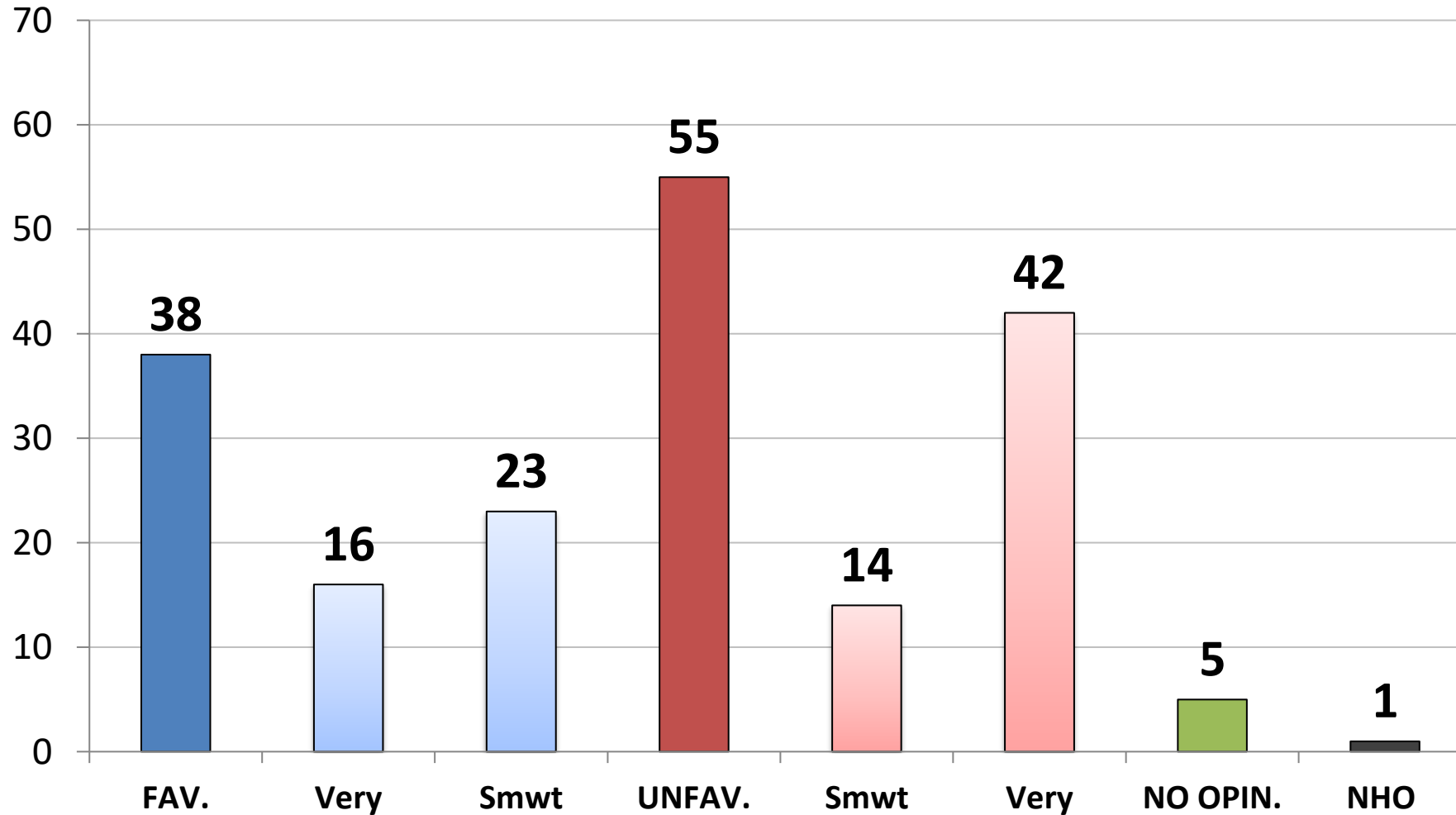
	Fav.	Unfav.
East	45	48
Midwest	35	60
South	47	50
West	47	51
Vote Trump 2020	9	86
Vote Biden 2020	76	20
Vote Cong. – GOP	12	84
Vote Cong. – DEM	82	17
Vote Cong.– UND	25	58
Approve Biden	79	18
Disapprove Biden	10	85
Republican	12	83
Democrat	80	18
Independent	37	57
Liberal	75	22
Moderate	46	48
Conservative	18	79
White	35	62
African- American	78	20
Hispanic	58	36
Under 55	47	47
Over 55	41	59
Married	42	54
Single	46	49
Men	33	62
Women	54	42
Live in Urban Area	58	37
Live in Suburban Area	39	57
Live in Rural Area	34	63

Opinion: Nancy Pelosi

Time Series



Opinion: *Nancy Pelosi*



	Fav.	Unfav.
East	44	48
Midwest	28	66
South	38	55
West	45	50
Vote Trump 2020	10	86
Vote Biden 2020	64	27
Vote Cong. – GOP	13	83
Vote Cong. – DEM	69	24
Vote Cong.– UND	20	61
Approve Biden	69	24
Disapprove Biden	9	86
Republican	14	83
Democrat	68	23
Independent	30	62
Liberal	63	29
Moderate	40	52
Conservative	18	78
White	33	63
African- American	63	24
Hispanic	43	47
Under 55	39	51
Over 55	38	61
Married	39	56
Single	34	56
Men	33	62
Women	43	49
Live in Urban Area	50	41
Live in Suburban Area	31	62
Live in Rural Area	37	61

All things being equal, do you prefer:

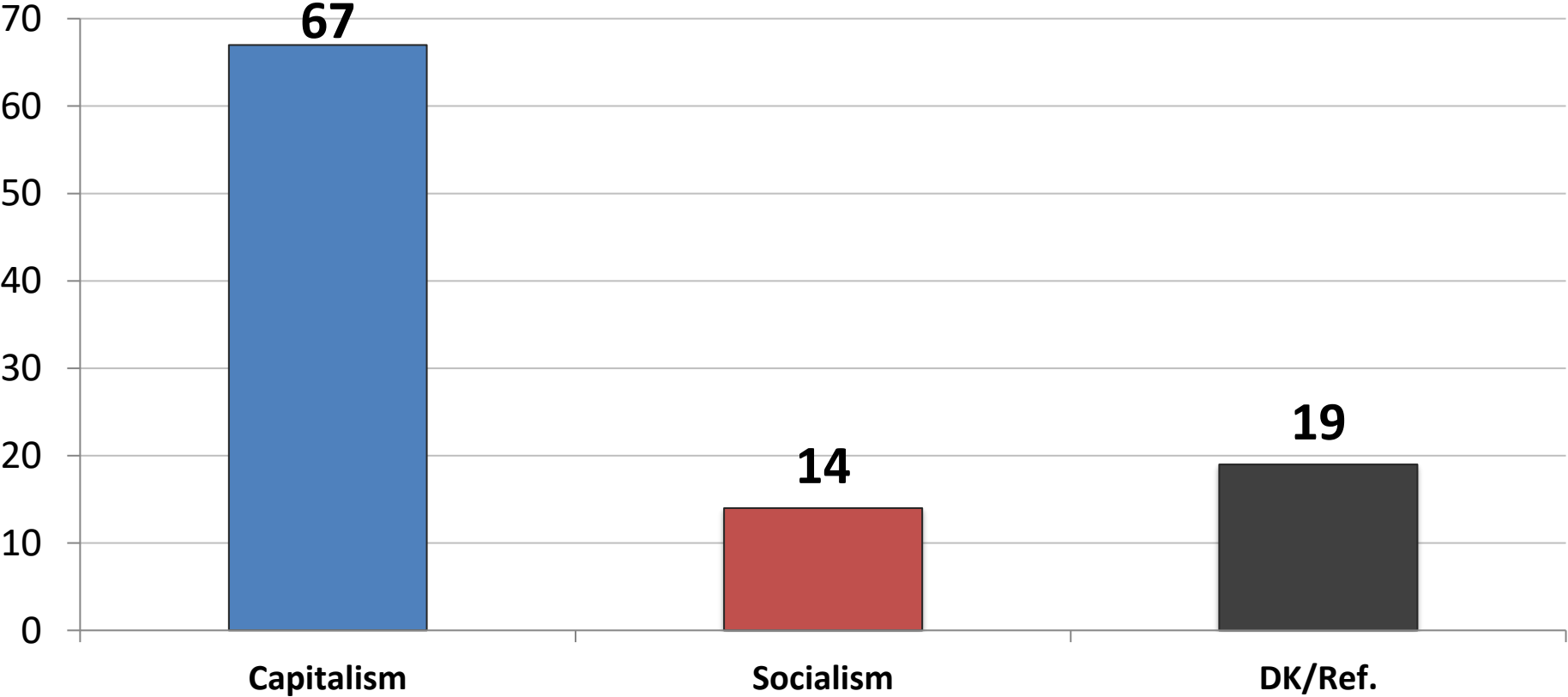
1. *Free Market Capitalism*

OR,

2. *Big Government Socialism*

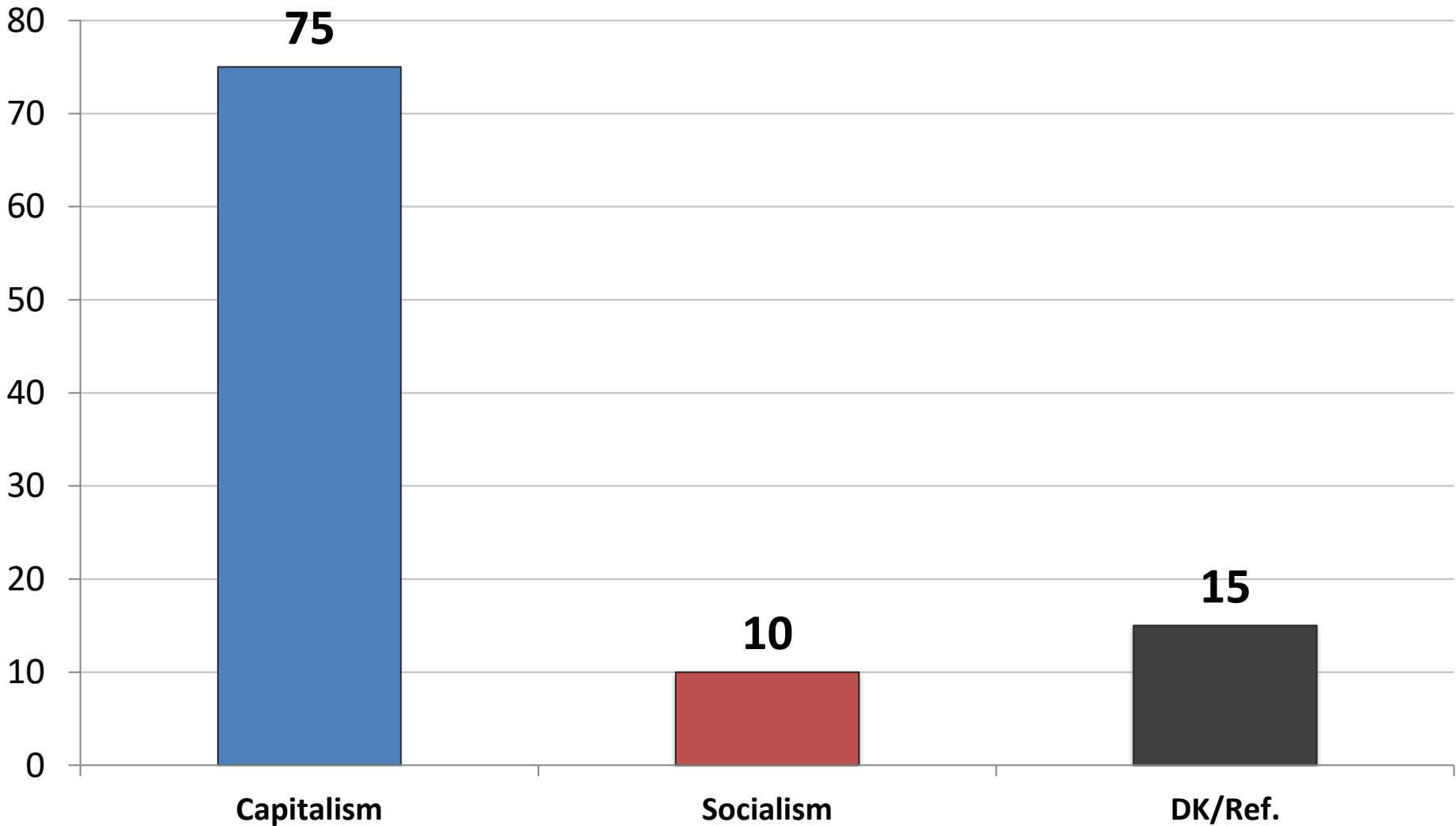
	10/19	12/19	2/20	3/20	4/20	5/20	6/20	8/20	9/20	11/20	12/20	3/21	4/21
Capitalism	63	60	61	62	59	61	62	59	60	76	58	60	63
Socialism	14	16	12	13	17	16	15	17	18	24	16	18	19

	5/21	6/21	8/21	10/21	11/21	1/22	2/22	3/22	4/22	6/22	7/22	8/22	9/22
Capitalism	64	63	59	61	62	61	62	62	61	62	60	59	67
Socialism	15	17	16	18	16	15	16	14	16	15	16	17	14



	<u>C</u>	<u>S</u>
East	67	14
Midwest	68	11
South	68	13
West	67	20
Vote Trump 2020	80	6
Vote Biden 2020	55	22
Vote Cong. – GOP	84	7
Vote Cong. – DEM	54	22
Vote Cong.– UND	41	15
Approve Biden	56	23
Disapprove Biden	79	6
Republican	83	7
Democrat	51	24
Independent	68	10
Liberal	52	30
Moderate	62	10
Conservative	84	6
White	74	11
African- American	50	18
Hispanic	55	24
Under 55	63	18
Over 55	73	9
Married	69	14
Single	63	16
Men	78	13
Women	57	15
Live in Urban Area	61	22
Live in Suburban Area	69	11
Live in Rural Area	73	11

All things being equal, do you prefer:
1. *Equal Opportunity Capitalism*
OR,
2. *Big Government Socialism*



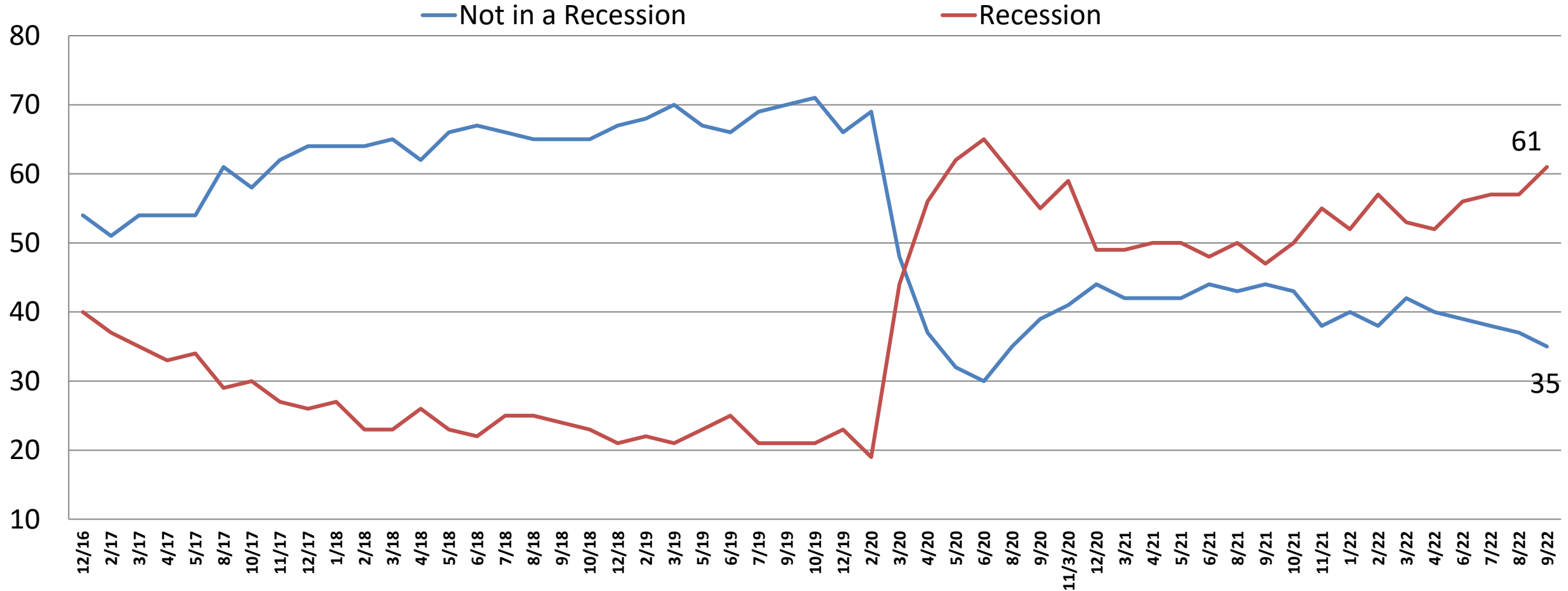
	C	S
East	69	13
Midwest	78	7
South	75	10
West	80	11
Vote Trump 2020	88	2
Vote Biden 2020	64	17
Vote Cong. – GOP	90	4
Vote Cong. – DEM	63	17
Vote Cong.– UND	59	9
Approve Biden	67	17
Disapprove Biden	85	4
Republican	90	4
Democrat	61	20
Independent	77	5
Liberal	63	22
Moderate	72	8
Conservative	88	3
White	80	8
African- American	63	14
Hispanic	68	16
Under 55	75	13
Over 55	77	7
Married	77	11
Single	73	11
Men	83	10
Women	69	10
Live in Urban Area	72	14
Live in Suburban Area	76	9
Live in Rural Area	80	7

Now, from the following list, which issue is personally most important to you?

	4/20	5/20	6/20	8/20	9/20	12/20	3/21	4/21	5/21	6/21	8/21	9/21	10/21	11/21	1/22	2/22	3/22	4/22	6/22	7/22	8/22	9/22	Rep	Dem	Ind	Lib	Mod	Cons	Under 55	Over 55	Men	Women
ECONOMIC	26	31	22	23	22	26	25	21	27	25	24	23	23	36	31	38	38	41	54	51	45	45	55	38	39	31	48	52	49	39	43	46
Reduce Inflation	*	*	*	*	*	*	*	*	*	5	7	6	8	16	13	17	21	23	24	22	21	20	27	14	21	12	22	27	20	22	22	20
Improving the Economy	11	16	11	13	10	12	13	9	15	7	5	6	6	6	6	6	5	4	15	14	12	13	15	14	8	9	13	14	14	10	10	14
Reduce Gas Prices	*	*	*	*	*	*	*	*	*	*	*	*	*	*	*	3	5	5	8	7	4	4	5	4	4	3	5	4	5	3	4	4
Create Jobs	5	7	8	7	9	9	7	7	8	6	7	7	6	6	4	7	4	5	3	3	3	4	2	4	3	4	3	1	5	0	2	3
Taxes	*	*	*	*	*	*	*	*	*	*	*	*	*	*	*	*	*	*	2	1	2	2	4	2	1	1	3	3	3	2	2	3
Reduce Gov't Spending	4	3	4	3	3	4	5	6	5	6	5	4	4	5	6	5	3	5	2	3	3	3	3	2	3	3	3	3	3	3	3	2
SOCIAL	18	20	30	23	27	22	22	27	24	28	24	23	30	24	23	25	25	25	23	25	29	28	12	42	35	51	27	15	29	30	25	33
Reduce Climate Change	4	6	5	4	5	3	5	6	5	5	7	8	7	8	7	8	7	7	6	7	7	6	2	10	9	15	6	1	6	8	7	6
Affordable Health care	7	7	7	6	7	7	7	7	7	9	7	7	9	8	8	8	8	8	5	4	6	6	3	8	6	12	5	1	6	5	6	5
Abortion	*	*	*	*	*	*	*	*	*	*	*	*	*	*	*	*	*	*	5	7	7	6	2	9	10	11	5	5	9	4	2	11
Protect Medicare	4	4	5	5	6	4	4	5	4	5	4	4	6	5	3	5	4	5	3	5	6	5	4	7	8	5	8	5	2	12	6	7
Improve Race Relations	*	*	8	7	6	5	4	6	4	4	3	2	4	2	3	3	3	2	3	2	2	2	0	4	2	4	1	1	3	1	2	2
Improving Education	3	4	5	4	3	3	2	4	3	4	4	2	4	2	2	2	2	3	1	1	2	3	1	4	1	5	2	1	3	1	2	3
SECURITY	6	5	11	13	12	11	14	20	20	20	17	20	18	16	15	14	17	15	11	10	11	12	17	8	9	7	9	17	10	14	14	9
Fix Immigration	3	2	3	2	2	3	4	5	12	11	11	11	12	9	8	8	8	7	5	4	6	6	11	3	4	3	4	10	5	7	7	5
National Security/Terrorism	3	3	3	4	4	3	5	3	5	5	4	8	4	4	4	4	6	5	4	3	3	4	4	2	2	2	2	5	2	4	4	3
Fight Crime/Law & Order	*	*	5	5	6	5	6	12	3	4	2	2	2	4	4	2	3	3	3	3	2	3	2	3	2	3	2	3	3	2	4	1
HONESTY/INTEGRITY/D.C	8	11	10	10	11	10	9	9	11	8	9	8	8	8	7	7	8	7	5	6	8	5	7	6	11	5	10	9	6	11	10	6
PROTECT HONEST ELEC w/ VOTER ID	*	*	*	*	*	*	*	*	*	*	*	*	*	*	4	4	4	3	4	2	2	3	3	1	1	1	1	2	1	2	2	1
COVID/Stop Spread	22	15	13	17	17	21	17	15	11	10	16	17	13	11	*	8	6	5	2	3	2	2	2	3	2	3	3	1	2	2	4	1
RE-EXAMINING 2020 ELEC.	*	*	*	*	*	*	*	*	*	4	5	4	4	3	2	2	2	2	1	1	2	3	3	0	3	1	1	3	3	1	2	2
DK/Refused	2	1	2	2	3	2	2	2	3	2	1	2	1	2	2	2	2	1	2	2	1	1	1	1	1	1	2	1	2	1	1	2

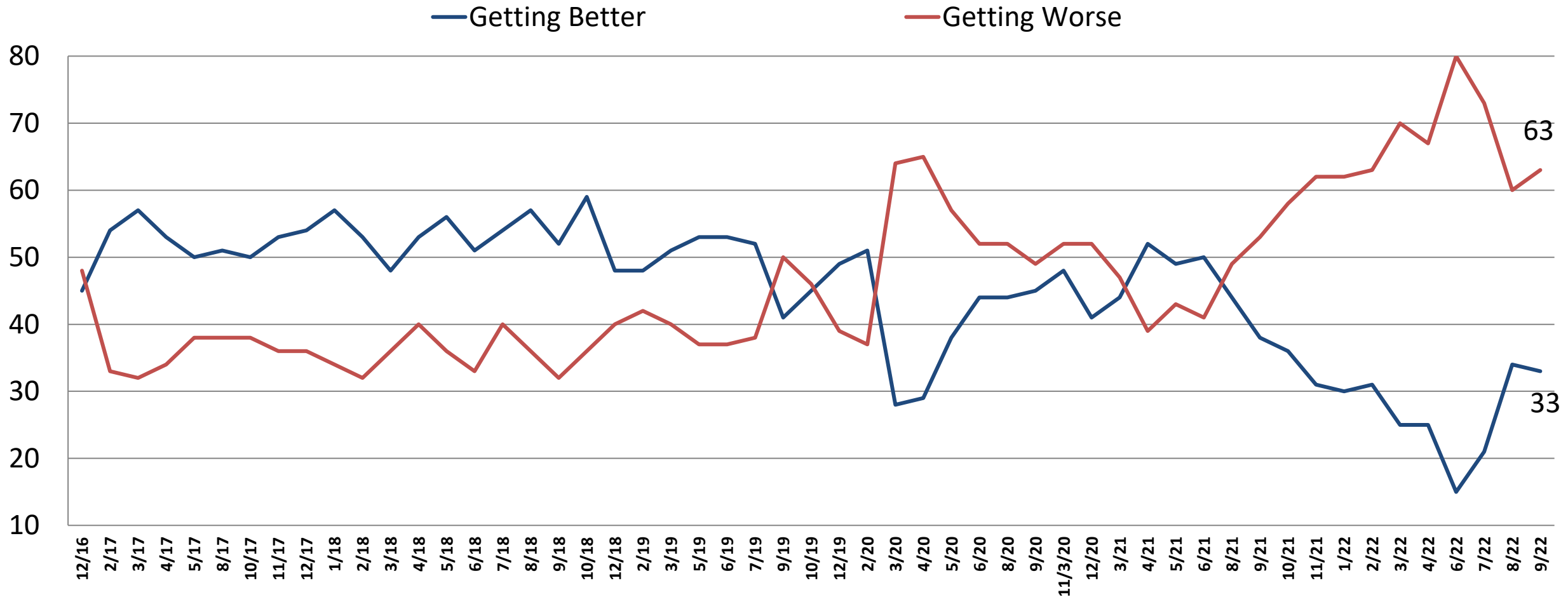
Current Opinion of the U.S. Economy

Time Series



Current Opinion of the U.S. Economy

Time Series



Current Opinion of the U.S. Economy

Time Series

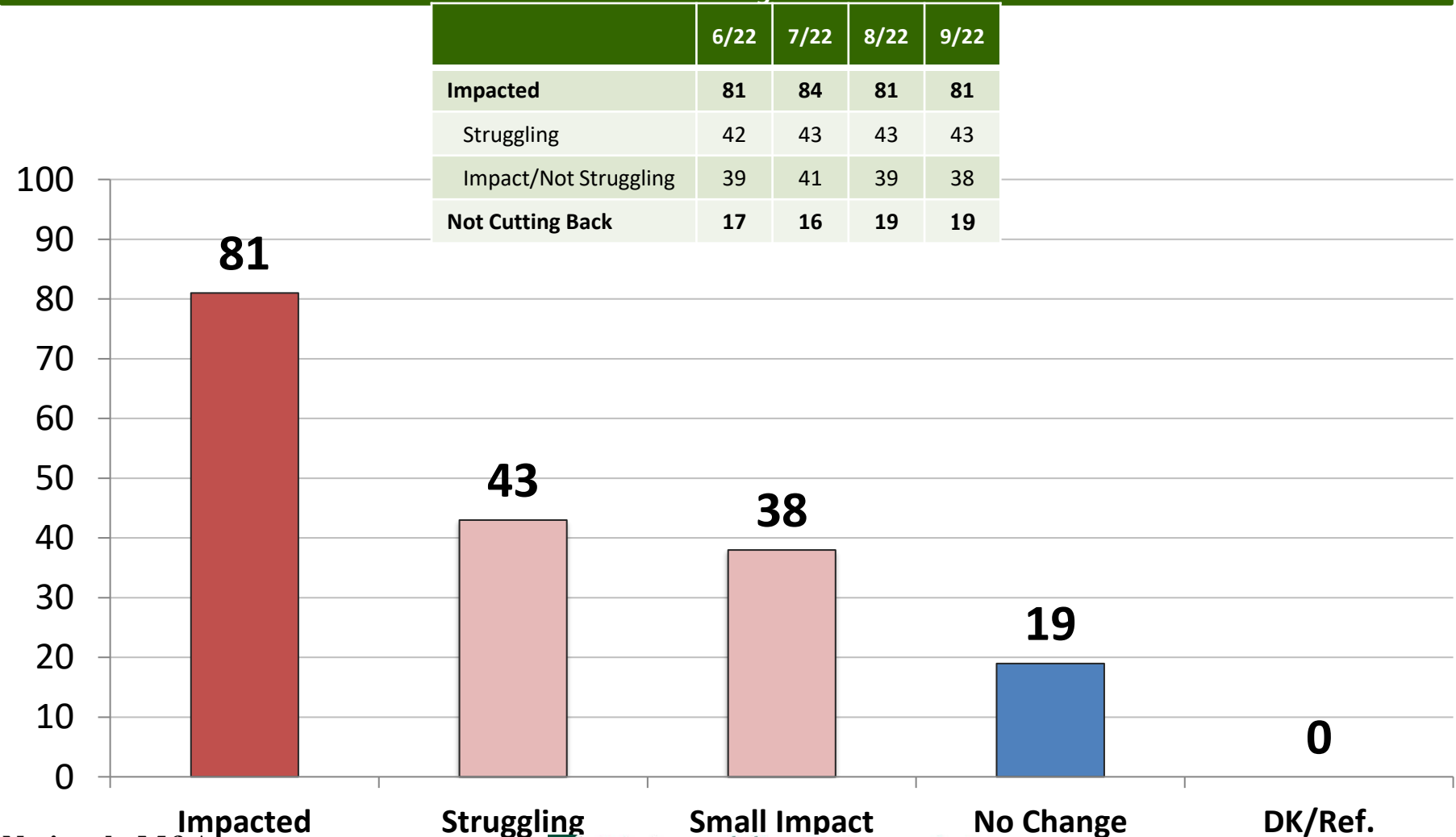
	10/ 19	12/19	2/20	3/20	4/20	5/20	6/20	8/20	9/20	11/20	12/20	3/21	4/21	5/21	6/21	8/21	9/21	10/21	11/21	1/22	2/22	3/22	4/22	6/22	7/22	8/22	9/22	Rep	Dem	Ind	Lib	Mod	Con	Under 55	Over 55	Men	Wo- men
NOT RECESSION	71	66	69	48	37	32	30	35	39	41	44	42	42	42	44	43	44	43	38	40	38	42	40	39	38	37	35	27	43	41	48	41	24	36	38	36	37
Getting Better	36	38	43	17	14	12	16	18	21	20	23	17	21	21	22	21	19	18	16	16	16	14	14	7	9	17	15	9	24	18	31	17	6	13	22	19	14
Getting Worse	35	28	27	30	24	20	15	17	18	21	21	24	21	21	21	22	25	25	22	24	22	28	26	32	29	20	20	19	19	23	18	23	18	23	16	17	23
RECESSION	21	23	19	44	56	62	65	60	55	59	49	49	50	50	48	50	47	50	55	52	57	53	52	56	57	57	61	69	50	51	43	53	73	56	59	60	55
Getting Better	9	12	9	11	15	25	29	26	25	28	18	26	31	28	28	23	18	18	15	14	15	12	11	8	13	17	17	12	26	12	22	19	11	17	16	20	14
Getting Worse	11	11	11	34	41	37	37	34	31	31	31	23	18	22	20	27	28	33	40	38	41	41	41	49	44	40	43	58	24	39	21	33	62	39	42	40	41
D.K./REFUSED	9	12	12	9	7	6	4	5	6	0	8	9	8	8	8	8	9	7	7	8	6	5	8	5	5	6	4	3	7	9	9	7	3	8	4	4	8
GETTING BETTER	45	49	52	28	29	38	44	44	45	48	41	44	52	49	50	44	38	36	31	30	31	25	25	15	21	34	33	20	50	29	52	37	17	31	38	40	28
GETTING WORSE	46	39	39	64	65	57	52	52	49	52	52	47	39	43	41	49	53	58	62	62	63	70	67	80	73	60	63	77	43	62	39	57	80	62	58	56	64
D.K./REFUSED	9	12	12	9	7	6	4	5	6	0	8	9	8	8	8	8	9	7	7	8	6	5	8	5	5	6	4	3	7	9	9	7	3	8	4	4	8
Net Diff.	-1	10	13	-36	-37	-19	-8	-8	-4	-3	-11	-3	13	6	9	-5	-16	-22	-31	-32	-32	-44	-42	-68	-52	-27	-30	-57	8	-33	13	-20	-64	-31	-21	-17	-36

Which of the following best describes how inflation and higher costs have impacted your personal and household financial situation?

With inflation and higher prices, we are struggling to keep up and afford basic necessities.

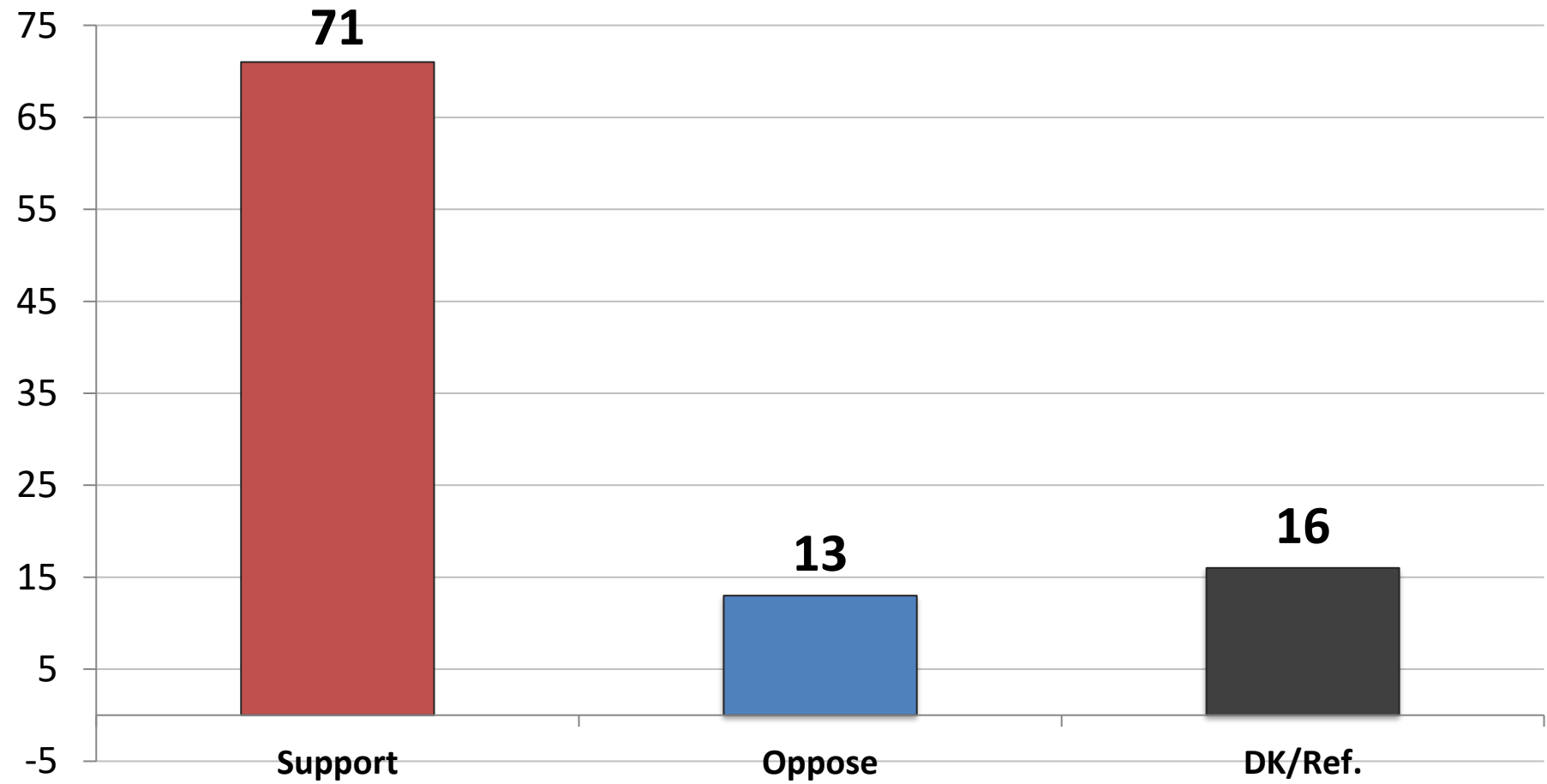
We are not struggling but inflation and higher prices have had a significant impact on our finances and spending.

Despite inflation and higher prices, we are still able to afford our normal spending without cutting back.



	Struggle	Small Impact	No Change
East	40	37	24
Midwest	49	38	14
South	45	37	19
West	36	43	21
Vote Trump 2020	48	38	14
Vote Biden 2020	38	39	24
Vote Cong. – GOP	46	41	13
Vote Cong. – DEM	39	36	25
Vote Cong.– UND	44	36	20
Approve Biden	37	38	25
Disapprove Biden	49	38	12
Republican	45	40	15
Democrat	41	35	24
Independent	42	42	17
Liberal	42	34	24
Moderate	42	41	17
Conservative	44	39	17
White	42	40	18
African- American	42	34	24
Hispanic	46	35	19
Under 55	47	34	19
Over 55	37	44	18
Married	37	42	21
Single	45	37	19
Men	43	36	21
Women	43	40	17
Live in Urban Area	44	32	24
Live in Suburban Area	39	43	17
Live in Rural Area	48	37	15

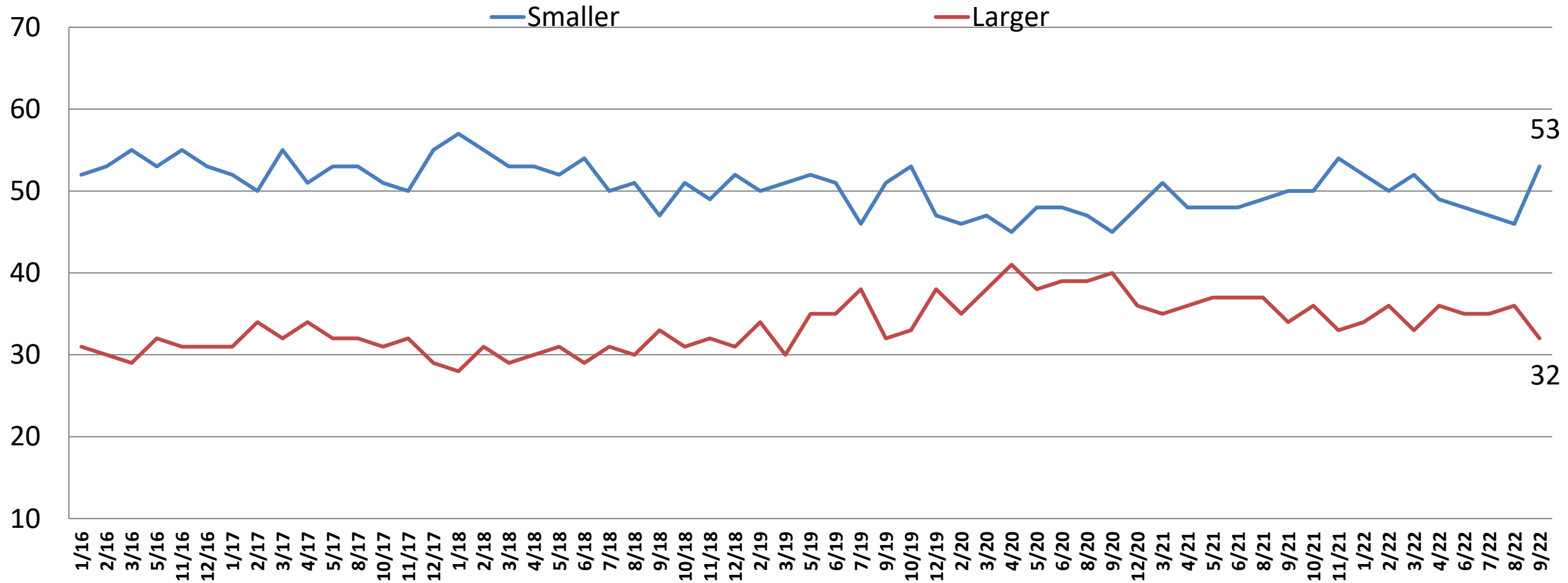
Do you support or oppose significant reductions to federal spending in order to stop inflation?



	Support	Oppose
East	71	13
Midwest	72	11
South	69	14
West	72	14
Vote Trump 2020	82	8
Vote Biden 2020	61	17
Vote Cong. – GOP	85	9
Vote Cong. – DEM	60	17
Vote Cong.– UND	49	16
Approve Biden	63	18
Disapprove Biden	79	9
Republican	85	8
Democrat	63	16
Independent	64	16
Liberal	64	19
Moderate	62	14
Conservative	84	8
White	74	13
African- American	58	16
Hispanic	71	13
Under 55	73	14
Over 55	69	13
Married	77	10
Single	64	18
Men	76	14
Women	66	13
Live in Urban Area	69	15
Live in Suburban Area	71	14
Live in Rural Area	73	10

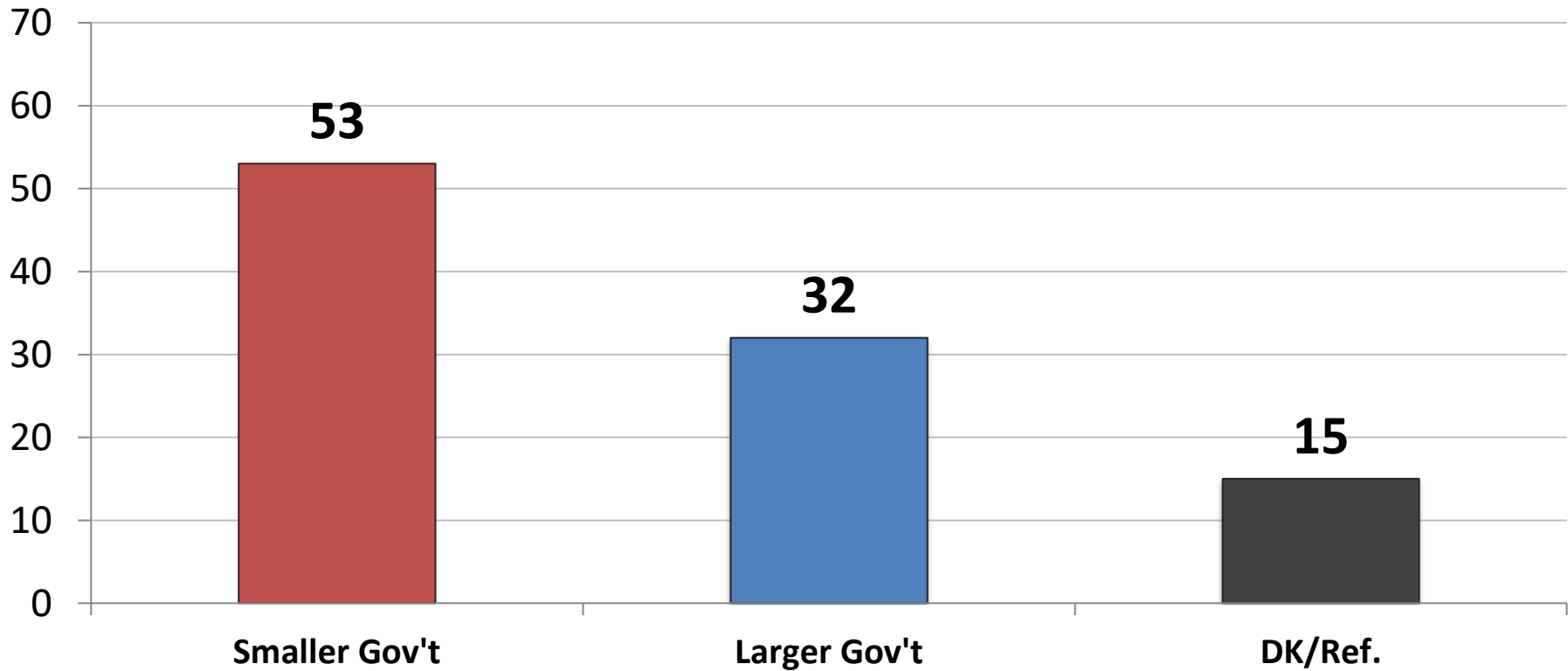
Would you say you most favor a smaller government with fewer services or a larger government with many services?

Time Series



Would you say you most favor a smaller government with fewer services or a larger government with many services?

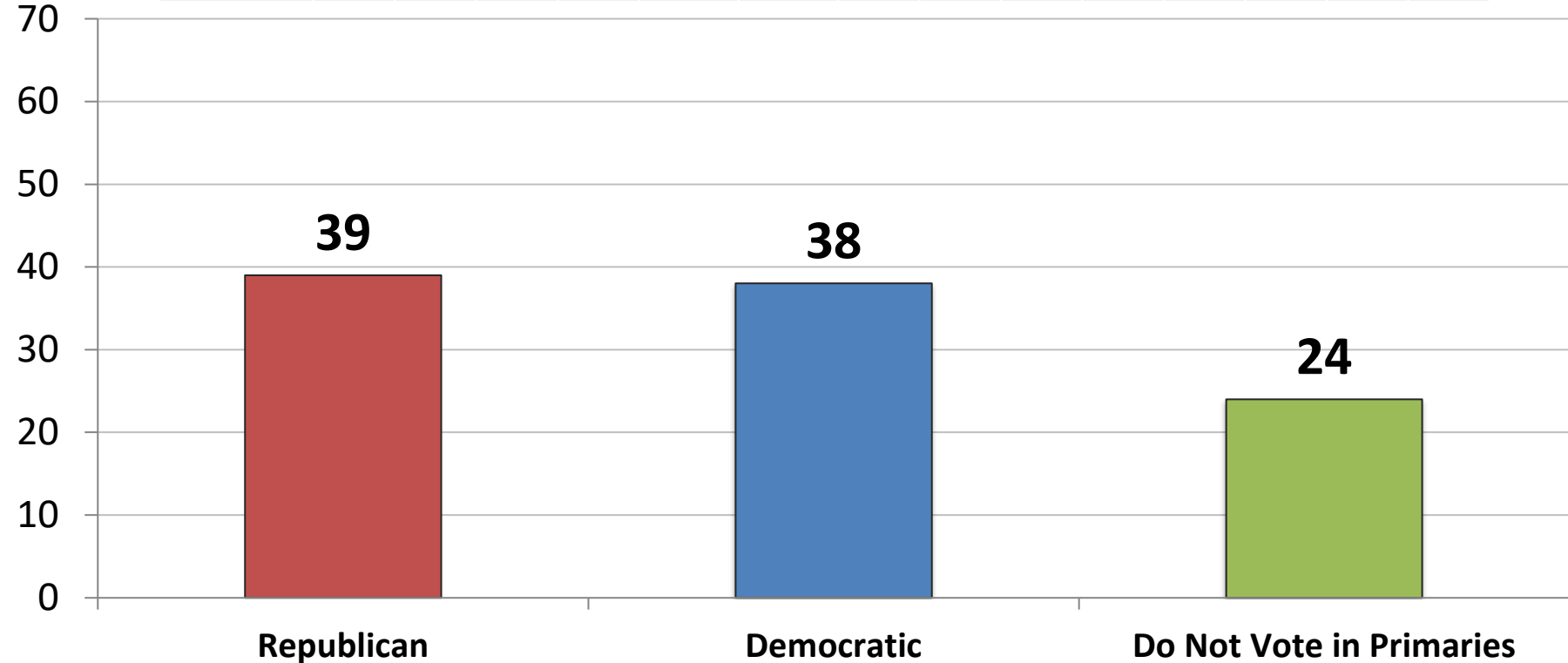
	3/21	4/21	5/21	6/21	8/21	9/21	10/21	11/21	1/22	2/22	3/22	4/22	6/22	7/22	8/22	9/22
Smaller Gov't	51	48	48	48	49	50	50	54	52	50	52	49	48	47	46	53
Larger Gov't	35	36	37	37	37	34	36	33	34	36	33	36	35	35	36	32



	Smaller	Larger
East	48	40
Midwest	57	23
South	53	30
West	50	39
Vote Trump 2020	72	16
Vote Biden 2020	34	47
Vote Cong. – GOP	73	18
Vote Cong. – DEM	32	50
Vote Cong.– UND	48	20
Approve Biden	34	50
Disapprove Biden	70	16
Republican	72	17
Democrat	31	50
Independent	55	28
Liberal	34	54
Moderate	44	31
Conservative	74	17
White	60	28
African- American	33	42
Hispanic	40	42
Under 55	48	36
Over 55	58	28
Married	57	32
Single	46	34
Men	62	29
Women	44	35
Live in Urban Area	39	45
Live in Suburban Area	58	28
Live in Rural Area	60	23

INDEPENDENTS ONLY: Thinking ahead to the 2024 primary election for President, in which party's primary are you more likely to vote – the Republican primary or the Democratic primary

	5/21	6/21	8/21	9/21	10/21	11/21	1/22	2/22	3/22	4/22	6/22	7/22	8/22	9/22
Republican	31	31	40	36	38	35	40	38	37	38	28	39	37	39
Democrat	33	35	36	39	38	35	34	31	36	35	32	37	36	38
Don't Vote	25	23	25	24	24	28	26	31	28	27	14	24	26	24



	GOP	DEM
East	30	31
Midwest	52	27
South	42	35
West	31	55
Vote Trump 2020	71	9
Vote Biden 2020	10	66
Vote Cong. – GOP	78	7
Vote Cong. – DEM	5	79
Vote Cong.– UND	28	23
Approve Biden	9	70
Disapprove Biden	62	16
Republican	-	-
Democrat	-	-
Independent	39	38
Liberal	17	69
Moderate	35	41
Conservative	62	11
White	40	35
African- American	29	67
Hispanic	39	40
Under 55	36	39
Over 55	43	36
Married	41	35
Single	43	38
Men	43	33
Women	36	41
Live in Urban Area	44	40
Live in Suburban Area	33	35
Live in Rural Area	46	40

Thinking ahead to the 2024 Democratic primary election for President, if that election were held today among the following candidates, for whom would you vote? (*Democrat Primary Voters*)

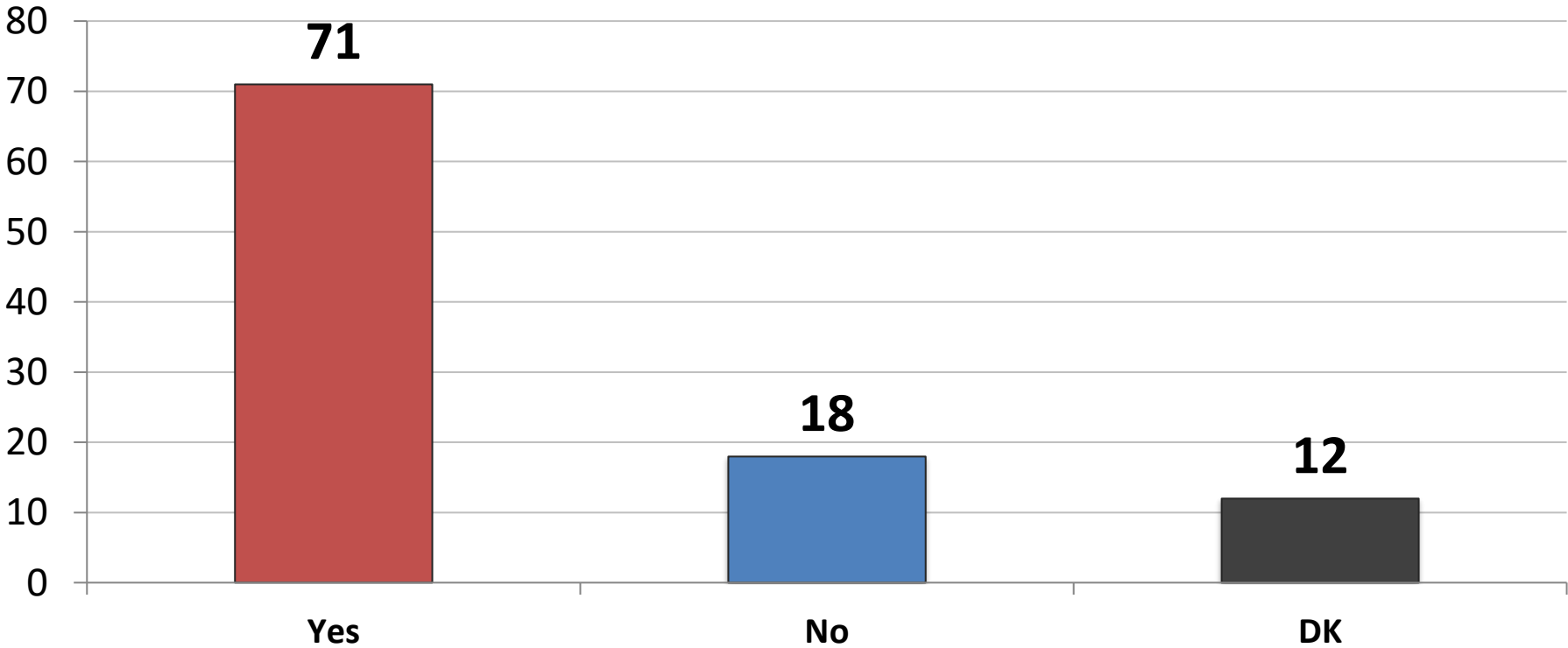
9/22: N=471	11/21	1/22	2/22	3/22	4/22	6/22	7/22	8/22	9/22
Joe Biden	24	25	23	27	30	23	20	23	27
Michelle Obama	16	17	19	15	17	18	16	13	16
Alexandria Ocasio-Cortez	5	7	5	5	4	6	5	1	3
Kamala Harris	13	8	7	11	7	5	5	8	6
Pete Buttigieg	8	4	8	6	7	5	6	5	5
Stacey Abrams	4	6	5	4	4	5	3	3	4
Hillary Clinton	*	7	4	5	4	5	4	6	6
Beto O'Rourke	2	3	2	2	1	4	5	4	2
Cory Booker	2	2	3	3	3	3	2	2	1
Amy Klobuchar	3	2	3	1	2	2	2	1	1
Oprah Winfrey	*	*	*	*	*	2	1	1	1
Gavin Newsom	2	3	3	1	1	2	3	5	2
Matthew McConaughey	*	*	*	*	*	1	2	1	2
Joe Manchin	2	2	2	2	1	1	1	2	1
Andrew Cuomo	1	1	1	1	2	1	0	1	0
Phil Murphy	*	*	*	*	0	1	1	1	0
Tim Kaine	1	0	1	2	1	1	1	0	1
Eric Adams	*	0	0	1	0	1	1	1	0
John Hickenlooper	1	0	1	0	0	0	0	1	1
Deval Patrick	0	0	1	1	0	0	0	1	0
Kirsten Gillibrand	1	1	0	1	0	0	0	1	0
Tom Steyer	0	0	1	1	0	0	1	1	1
Bernie Sanders	*	*	*	*	*	*	8	6	7
Elizabeth Warren	*	*	*	*	*	*	3	3	2
Jared Polis	*	*	*	*	*	*	0	0	1
Undecided	16	13	13	15	16	15	11	13	11

Thinking ahead to the 2024 Democratic primary election for President, if Joe Biden were not to run again, if that election were held today among the following candidates, for whom would you vote? *(Democrat Primary Voters)*

9/22: N471	11/20	12/20	3/21	4/21	5/21	6/21	8/21	9/21	10/21	11/21	1/22	2/22	3/22	4/22	6/22	7/22	8/22	9/22
Michelle Obama	23	29	23	20	16	19	16	17	18	23	22	22	20	23	19	18	16	18
Kamala Harris	29	25	28	34	35	31	28	29	29	22	16	15	18	17	13	13	15	11
Pete Buttigieg	6	5	7	5	6	4	8	7	9	8	6	10	7	9	8	7	6	6
Hillary Clinton	*	*	*	*	*	*	*	*	*	*	9	9	7	9	7	7	7	9
Alexandria Ocasio-Cortez	6	7	8	3	7	5	7	7	7	5	9	6	6	4	7	4	2	2
Stacey Abrams	*	*	*	*	4	5	4	5	5	5	6	6	5	6	6	2	4	4
Beto O’Rourke	*	*	2	2	2	3	2	3	3	3	2	3	3	1	4	3	3	5
Cory Booker	2	3	4	4	4	3	5	4	3	3	4	4	3	3	3	2	2	1
Amy Klobuchar	2	2	3	4	3	3	2	3	3	5	3	2	2	4	3	4	2	2
Gavin Newsom	*	*	0	2	2	1	2	2	2	3	2	4	2	2	3	5	4	5
Oprah Winfrey	*	*	*	*	*	*	*	*	*	*	*	*	*	*	2	1	2	3
Matthew McConaughey	*	*	*	*	*	*	*	*	*	*	*	*	*	*	2	2	2	2
Joe Manchin	*	*	*	*	*	*	*	*	2	2	2	2	2	1	2	1	2	1
Eric Adams	*	*	*	*	*	*	*	*	*	*	1	0	1	1	1	1	1	1
Tim Kaine	1	2	1	1	2	1	1	0	1	1	0	1	1	1	1	1	2	1
Deval Patrick	1	1	1	1	2	1	3	1	1	1	0	1	1	0	1	0	0	1
Andrew Cuomo	5	5	1	2	1	2	4	2	2	2	2	1	1	2	1	2	1	1
Phil Murphy	*	*	*	*	*	*	*	*	*	*	*	*	*	0	1	1	1	1
Kirsten Gillibrand	1	1	1	2	1	2	1	1	1	0	0	0	0	0	0	1	1	1
John Hickenlooper	1	3	2	2	1	2	2	0	1	1	1	2	1	0	0	1	*	1
Tom Steyer	*	*	*	*	*	*	*	1	1	2	0	1	2	1	0	1	1	1
Ilhan Omar	1	1	1	1	1	1	*	*	*	*	*	*	*	*	*	*	*	*
Bernie Sanders	*	*	*	*	*	*	*	*	*	*	*	*	*	*	*	10	7	7
Elizabeth Warren	*	*	*	*	*	*	*	*	*	*	*	*	*	*	*	3	4	4
Jared Polis	*	*	*	*	*	*	*	*	*	*	*	*	*	*	*	*	0	2
Undecided	23	18	14	12	13	16	13	18	13	15	15	13	18	17	15	10	15	13

Do you want to see Donald Trump run for President again in 2024? (Republican Primary Voters)

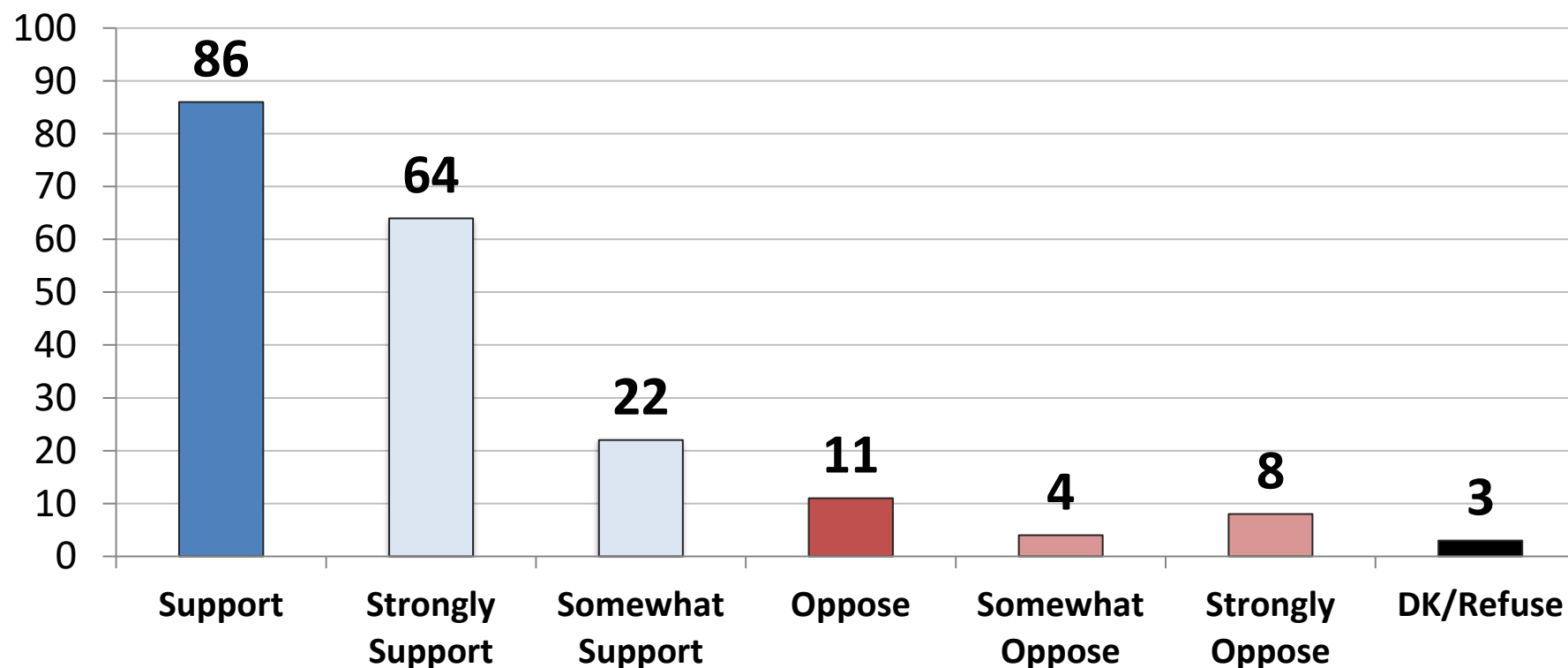
	3/21	4/21	5/21	6/21	8/21	9/21	10/21	11/21	1/22	2/22	3/22	4/22	6/22	7/22	8/22	9/22
Yes	72	69	73	72	66	71	70	71	70	66	68	69	70	64	69	71
No	20	22	17	19	22	21	21	18	21	22	20	23	19	26	22	18



	<u>Yes</u>	<u>No</u>
East	55	26
Midwest	77	17
South	73	16
West	69	16
Vote Trump 2020	76	12
Vote Biden 2020	27	64
Vote Cong. – GOP	73	16
Vote Cong. – DEM	31	50
Vote Cong.– UND	59	29
Approve Biden	62	32
Disapprove Biden	72	15
Republican	75	15
Democrat	-	-
Independent	56	25
Liberal	76	17
Moderate	60	23
Conservative	74	15
White	71	17
African- American	78	17
Hispanic	65	22
Under 55	77	14
Over 55	63	22
Married	66	21
Single	79	15
Men	72	17
Women	69	18
Live in Urban Area	81	11
Live in Suburban Area	63	23
Live in Rural Area	75	13

If Donald Trump ran for President again in 2024, would you support or oppose him for the Republican nomination? (Republican Primary Voters)

	3/21	4/21	5/21	6/21	8/21	9/21	10/21	11/21	1/22	2/22	3/22	4/22	6/22	7/22	8/22	9/22
Support	81	82	82	80	82	84	81	85	81	80	82	83	84	80	84	86
Oppose	15	15	13	16	15	14	15	12	15	16	15	14	14	16	12	11



	Support	Oppose
East	82	16
Midwest	90	8
South	86	10
West	84	16
Vote Trump 2020	92	6
Vote Biden 2020	31	65
Vote Cong. – GOP	89	9
Vote Cong. – DEM	32	60
Vote Cong. – UND	61	18
Approve Biden	67	31
Disapprove Biden	89	8
Republican	88	10
Democrat	-	-
Independent	79	14
Liberal	85	15
Moderate	78	15
Conservative	89	9
White	87	11
African- American	81	14
Hispanic	76	16
Under 55	88	8
Over 55	84	15
Married	84	14
Single	87	10
Men	88	9
Women	83	14
Live in Urban Area	88	8
Live in Suburban Area	82	16
Live in Rural Area	92	5

Thinking ahead to the 2024 Republican primary election for President, if that election were held today among the following candidates, for whom would you vote?*(Republican Primary Voters)*

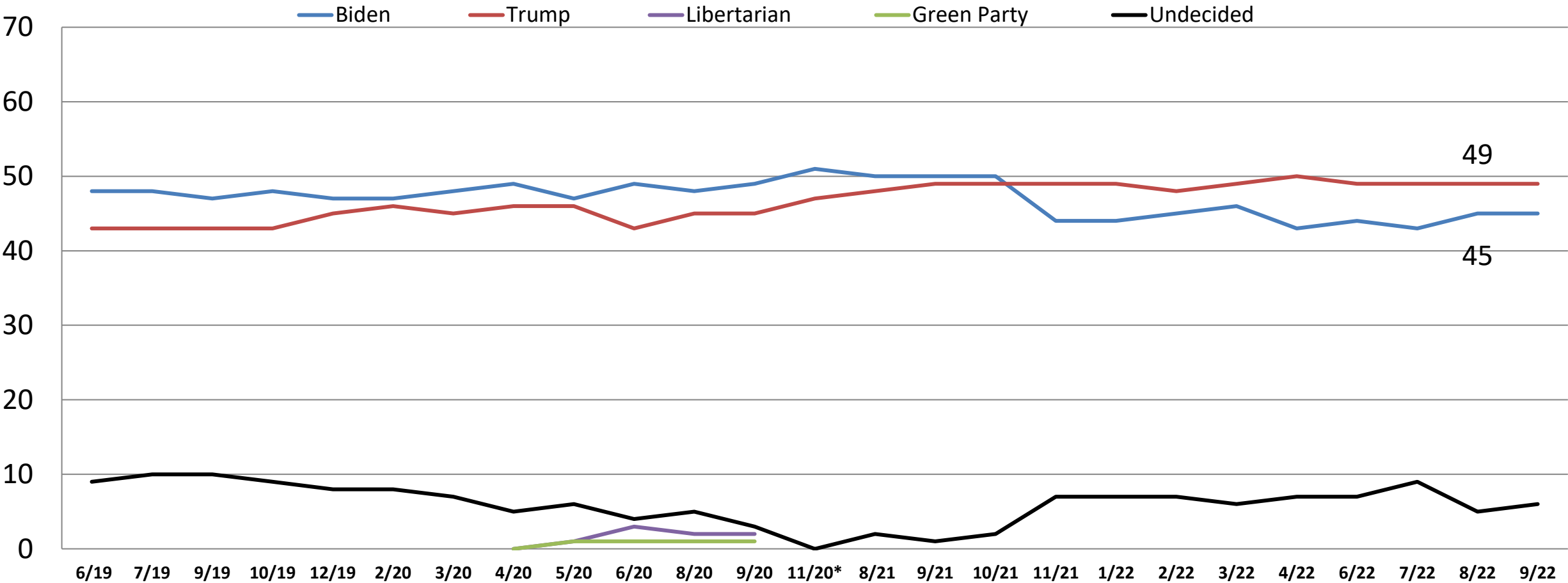
9/22: N=465	11/20	12/20	3/21	4/21	5/21	6/21	8/21	9/21	10/21	11/21	1/22	2/22	3/22	4/22	6/22	7/22	8/22	9/22
Donald Trump	53	56	55	55	57	55	54	59	53	55	53	54	55	57	59	51	55	55
Ron DeSantis	2	1	4	7	8	9	11	8	10	15	13	12	15	15	15	24	15	18
Mike Pence	9	11	8	10	10	8	8	10	9	7	9	8	13	9	7	7	6	6
Mitt Romney	4	4	3	3	2	3	3	3	4	2	3	3	2	4	4	2	4	2
Candace Owens	*	*	3	2	3	4	2	1	3	1	2	3	2	1	3	*	*	*
Marco Rubio	2	1	1	1	0	1	3	2	2	1	2	1	1	1	2	0	1	2
Greg Abbott	*	*	*	*	*	*	*	*	1	1	1	1	1	2	1	2	2	2
Tom Cotton	1	1	2	1	0	1	0	1	1	0	1	3	1	1	1	1	1	1
John Kasich	3	2	2	3	1	1	2	2	1	1	0	1	1	1	1	1	1	1
Tim Scott	1	1	1	1	1	1	0	1	1	1	1	1	0	0	1	1	1	1
Larry Hogan	*	*	*	*	*	*	*	*	*	*	1	1	0	1	1	1	2	1
Liz Cheney	*	*	*	*	1	1	1	2	1	2	1	1	1	1	1	2	3	2
John Bolton	*	*	*	*	*	*	*	*	*	*	1	0	0	0	0	0	2	2
Ted Cruz	4	5	5	3	3	4	3	3	3	2	*	*	*	*	*	*	*	*
Nikki Haley	4	3	3	2	5	3	4	2	4	3	4	2	*	*	*	*	*	*
Mike Pompeo	1	1	1	1	1	1	1	1	1	1	*	*	*	*	*	*	*	*
Rick Scott	1	0	0	1	1	1	0	1	1	0	*	*	*	*	*	*	*	*
Kristi Noem	1	2	1	0	1	0	2	0	1	1	*	*	*	*	*	*	*	*
Undecided	15	10	10	9	7	7	7	6	6	8	8	9	8	6	5	7	9	8

Now from a different list, thinking ahead to the 2024 Republican primary election for President, if that election were held today among the following candidates, for whom would you vote for? *(Republican Primary Voters)*

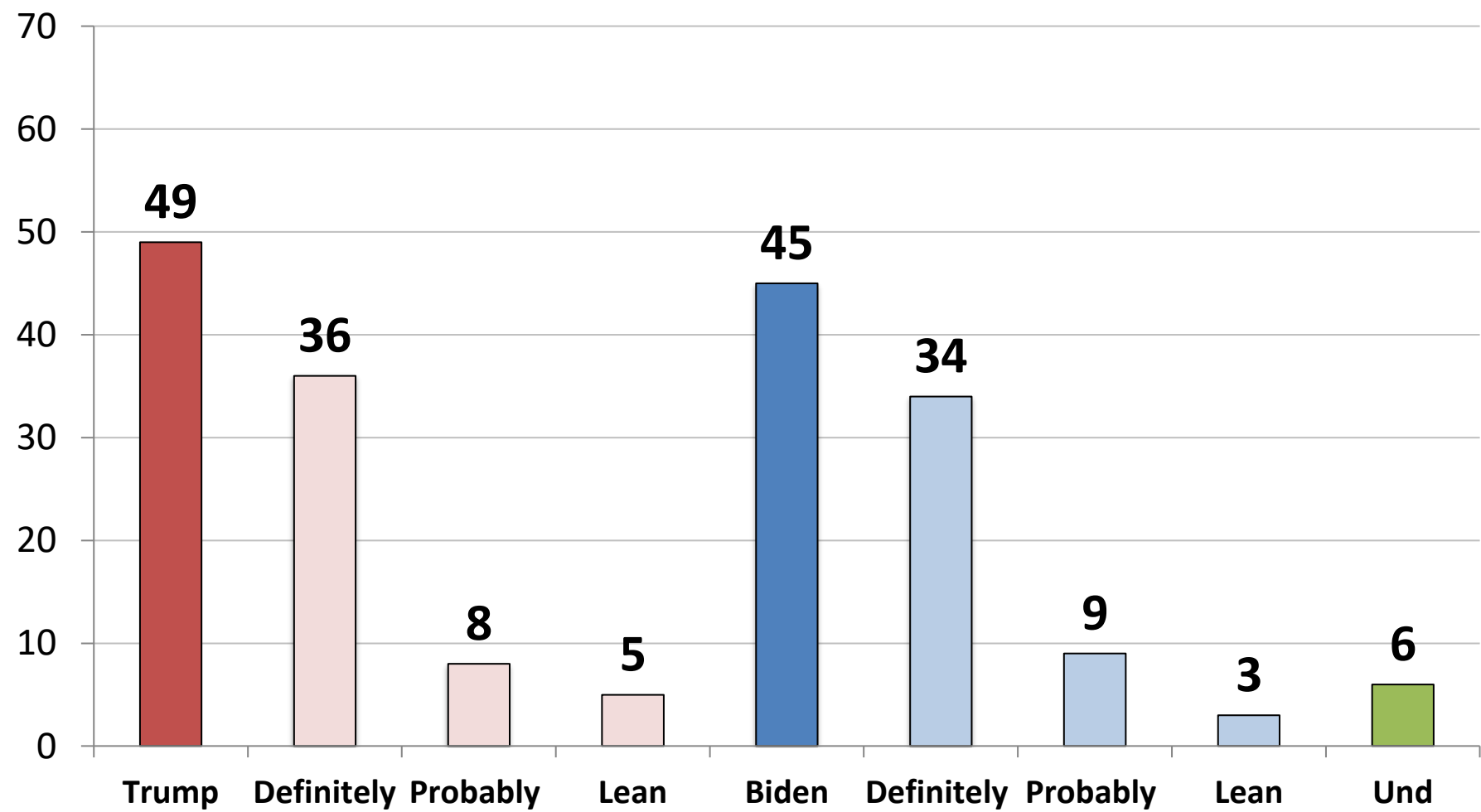
9/22: N=465	11/20	12/20	3/21	4/21	5/21	6/21	8/21	9/21	10/21	11/21	1/22	2/22	3/22	4/22	6/22	7/22	8/22	9/22
Ron DeSantis	2	2	9	14	18	24	23	22	24	25	26	27	26	31	32	36	26	31
Donald Trump, JR	20	20	21	15	13	15	12	19	18	20	18	17	16	16	17	14	18	19
Mike Pence	30	20	15	19	19	19	11	15	14	13	12	11	15	11	12	10	13	11
Candace Owens	*	*	4	4	5	3	6	5	5	3	3	4	3	3	4	2	2	2
Ted Cruz	5	7	9	10	12	6	9	7	5	7	8	5	5	6	4	4	3	6
Marco Rubio	2	3	2	3	1	2	4	2	2	2	1	2	2	3	3	1	2	2
Mike Pompeo	*	1	2	2	2	1	2	2	1	2	1	2	2	1	3	2	1	3
Nikki Haley	8	6	5	3	5	4	4	4	5	4	6	3	4	2	3	4	4	3
Mitt Romney	5	5	6	3	3	5	4	4	5	5	5	3	3	4	3	4	4	2
Tim Scott	1	2	2	1	2	1	1	2	2	2	1	1	1	1	2	2	2	1
Greg Abbott	*	*	*	*	*	*	*	*	2	1	1	2	2	3	2	1	3	2
Tom Cotton	1	2	2	2	1	1	1	1	1	0	1	2	1	1	1	1	1	1
Rick Scott	1	0.4	1	1	0	1	0	1	2	0	0	1	0	1	1	1	1	1
Kristi Noem	1	2	2	1	1	1	2	1	2	1	1	2	1	0	1	2	2	1
John Kasich	2	3	2	2	2	1	1	2	2	1	0	2	0	1	1	2	2	1
Liz Cheney	*	*	*	*	1	2	1	2	2	2	1	1	0	1	1	1	2	2
Larry Hogan	*	*	*	*	*	*	*	*	*	*	1	0	1	1	1	1	2	1
John Bolton	*	*	*	*	*	*	*	*	*	*	0	0	0	1	0	1	1	1
Ric Grenell	*	*	*	*	*	*	*	*	*	*	*	*	*	1	*	0	1	0
Undecided	21	22	17	14	12	11	14	12	10	12	13	13	17	13	11	13	12	12

If the general election for President were held today, would you be more likely to vote for Donald Trump, the Republican candidate or Joe Biden, the Democratic candidate?

Time Series



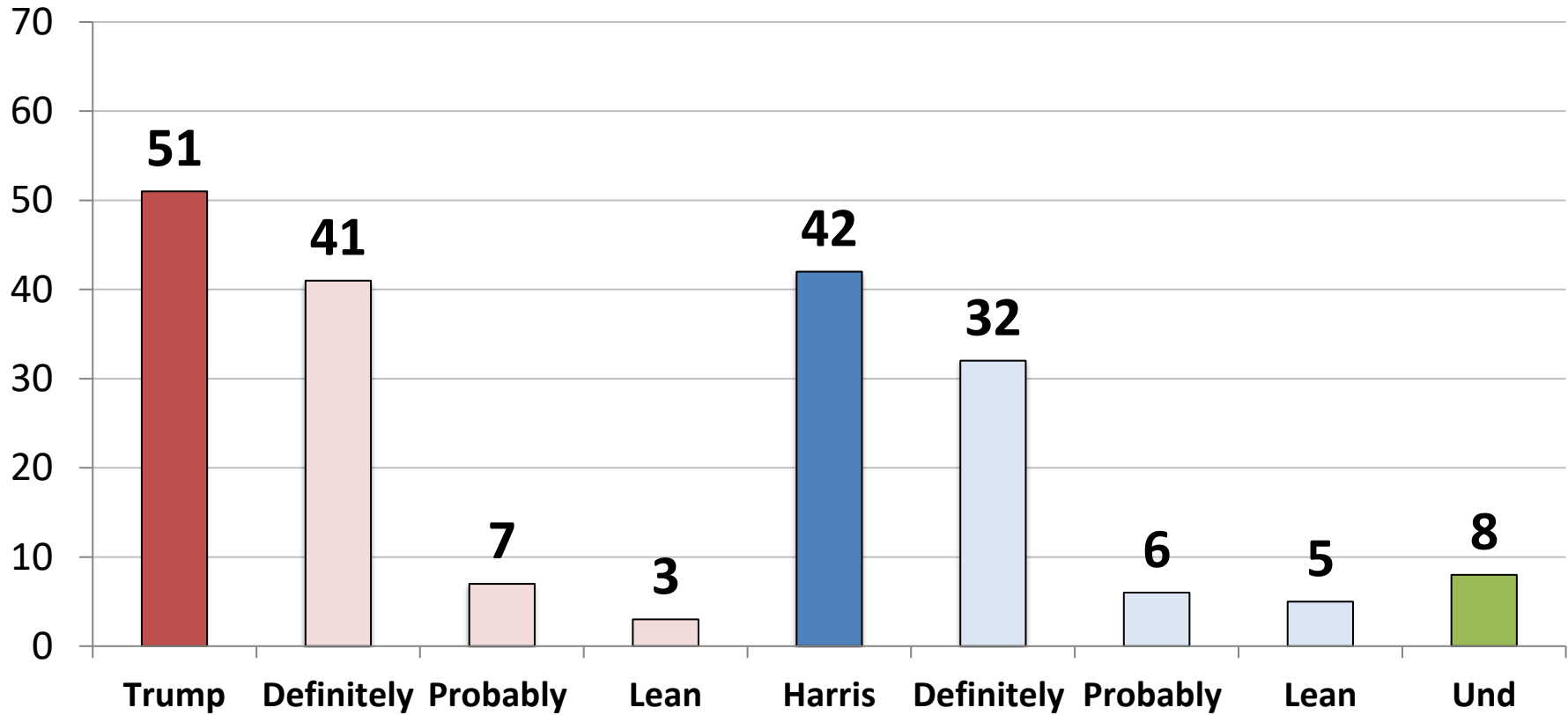
Now, if the 2024 Presidential election were held today, which one of the following best describes how you would vote in the general election for President between Donald Trump, the Republican candidate and Joe Biden, the Democrat candidate, for whom would you vote?



	Trump	Biden	Und.
East	42	52	6
Midwest	53	40	7
South	52	42	6
West	46	50	4
Vote Trump 2020	94	2	4
Vote Biden 2020	9	85	6
Vote Cong. – GOP	91	7	2
Vote Cong. – DEM	7	89	4
Vote Cong.– UND	35	29	37
Approve Biden	16	83	1
Disapprove Biden	82	9	9
Republican	91	7	3
Democrat	12	84	5
Independent	46	43	11
Liberal	24	73	3
Moderate	39	52	9
Conservative	78	17	4
White	58	37	5
African- American	19	76	6
Hispanic	38	56	6
Under 55	49	45	6
Over 55	50	45	6
Married	52	44	4
Single	49	44	7
Men	61	35	4
Women	39	55	7
Live in Urban Area	42	53	5
Live in Suburban Area	49	43	8
Live in Rural Area	59	38	3

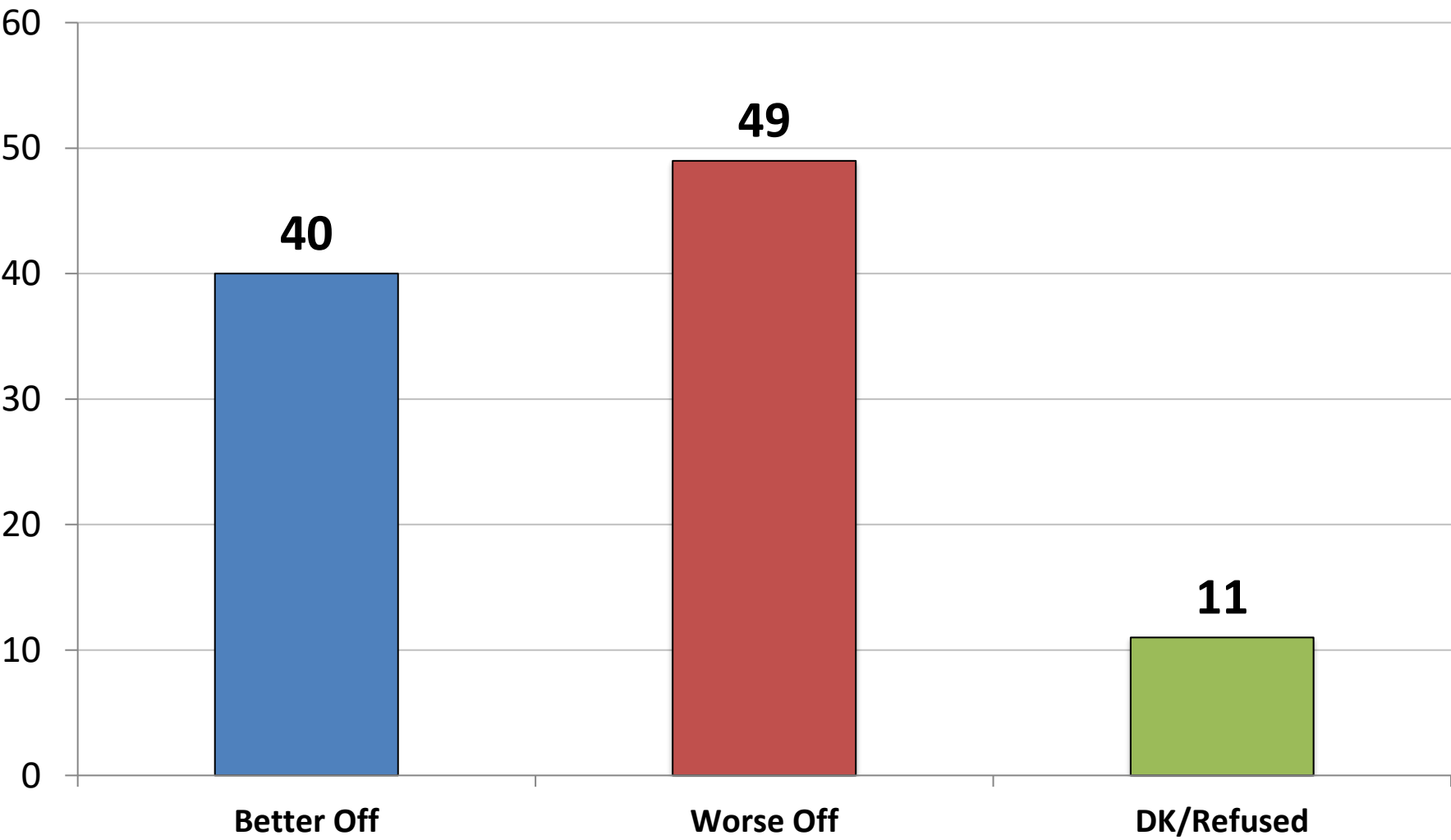
Now, if the 2024 Presidential election were held today, which one of the following best describes how you would vote in the general election for President between Donald Trump, the Republican candidate and Kamala Harris, the Democrat candidate, for whom would you vote?

	5/21	6/21	8/21	9/21	10/21	11/21	1/22	2/22	3/22	4/22	6/22	7/22	8/22	9/22
Donald Trump	49	49	49	49	49	50	51	50	50	51	50	50	51	
Kamala Harris	45	45	46	47	46	42	40	43	42	41	42	42	43	



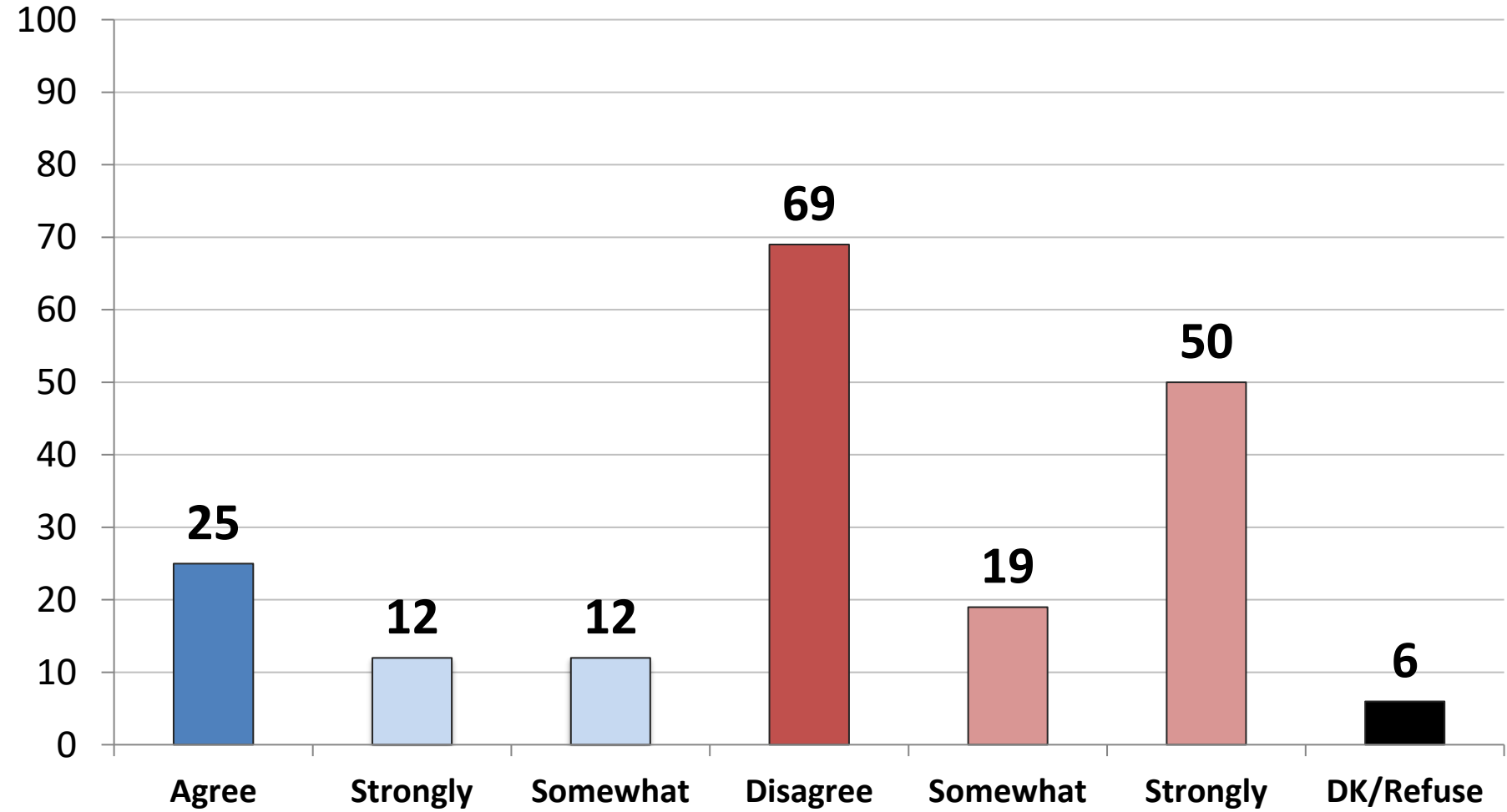
	Trump	Harris	Und.
East	44	49	8
Midwest	54	38	8
South	54	39	7
West	47	45	8
Vote Trump 2020	94	2	4
Vote Biden 2020	11	79	10
Vote Cong. – GOP	91	6	3
Vote Cong. – DEM	10	83	7
Vote Cong.– UND	38	28	35
Approve Biden	19	77	5
Disapprove Biden	82	9	9
Republican	93	5	3
Democrat	14	80	6
Independent	45	39	16
Liberal	25	70	5
Moderate	39	48	13
Conservative	81	14	5
White	60	33	7
African- American	19	75	6
Hispanic	36	56	8
Under 55	51	41	8
Over 55	50	43	6
Married	54	39	7
Single	50	43	8
Men	65	29	6
Women	38	54	9
Live in Urban Area	45	49	6
Live in Suburban Area	50	40	10
Live in Rural Area	61	35	5

Generally speaking, would you say America is better off or worse off as a result of Joe Biden and House Speaker Nancy Pelosi’s programs and policies?



	Better	Worse
East	43	48
Midwest	33	56
South	41	49
West	44	45
Vote Trump 2020	11	87
Vote Biden 2020	67	15
Vote Cong. – GOP	15	82
Vote Cong. – DEM	72	13
Vote Cong.– UND	12	57
Approve Biden	75	12
Disapprove Biden	7	86
Republican	16	82
Democrat	71	14
Independent	31	55
Liberal	71	18
Moderate	39	45
Conservative	17	78
White	35	59
African- American	57	20
Hispanic	49	33
Under 55	43	45
Over 55	36	55
Married	40	54
Single	39	44
Men	39	56
Women	41	44
Live in Urban Area	55	35
Live in Suburban Area	34	55
Live in Rural Area	32	59

Do you agree or disagree with President Joe Biden when he says we have quote—“zero inflation”?



	Agree	Disagree
East	32	63
Midwest	16	78
South	28	64
West	22	75
Vote Trump 2020	12	86
Vote Biden 2020	37	53
Vote Cong. – GOP	14	84
Vote Cong. – DEM	38	52
Vote Cong.– UND	14	73
Approve Biden	45	46
Disapprove Biden	5	92
Republican	16	82
Democrat	43	47
Independent	12	82
Liberal	43	49
Moderate	22	70
Conservative	14	84
White	19	77
African- American	39	49
Hispanic	44	47
Under 55	37	57
Over 55	8	85
Married	27	69
Single	29	63
Men	28	69
Women	22	69
Live in Urban Area	43	51
Live in Suburban Area	16	77
Live in Rural Area	17	77

Voter Profile: n=1,000

Total		Total		Total	
Party:	%	Age:	%	Area:	%
Republican	36	18-29	17	Urban	32
Democrat	37	30-40	16	Suburban	46
Ind./Other/D.K./Ref.	27	41-55	25	Rural	23
Ideology:	%	56-65	20	Region:	%
Liberal	28	Over 65	22	New England	5
Moderate	35	Mean	49.3	Middle Atlantic	13
Conservative	37	Race:	%	East North Central	15
Gender:	%	White	69	West North Central	6
Male	48	African American/Black	14	South Atlantic	23
Female	52	Hispanic	14	East South Central	6
		Asian	3	West South Central	11
		Vote Behavior:	%	Mountain	8
		Democrat	44	Pacific	14
		Ticket Splitter	15		
		Republican	41		

Voter Profile: n=1,000

Total	
Religion:	%
Protestant	38
Catholic	22
Jewish	5
Atheist/Agnostic	9
Muslim	1
Buddhist	2
Born Again/Evangelical:	%
Yes	45
No	55
Abortion:	%
Pro-Life	46
Pro-Choice	54

**New York Office**

566 South Route 303
Blauvelt, NY 10913
845-365-2000

D.C./Virginia Office

1012 Cameron Street
Alexandria, VA 22314
703-518-4445

www.mclaughlinonline.com