



McLaughlin & Associates

National Survey Results

General Election Likely Voters

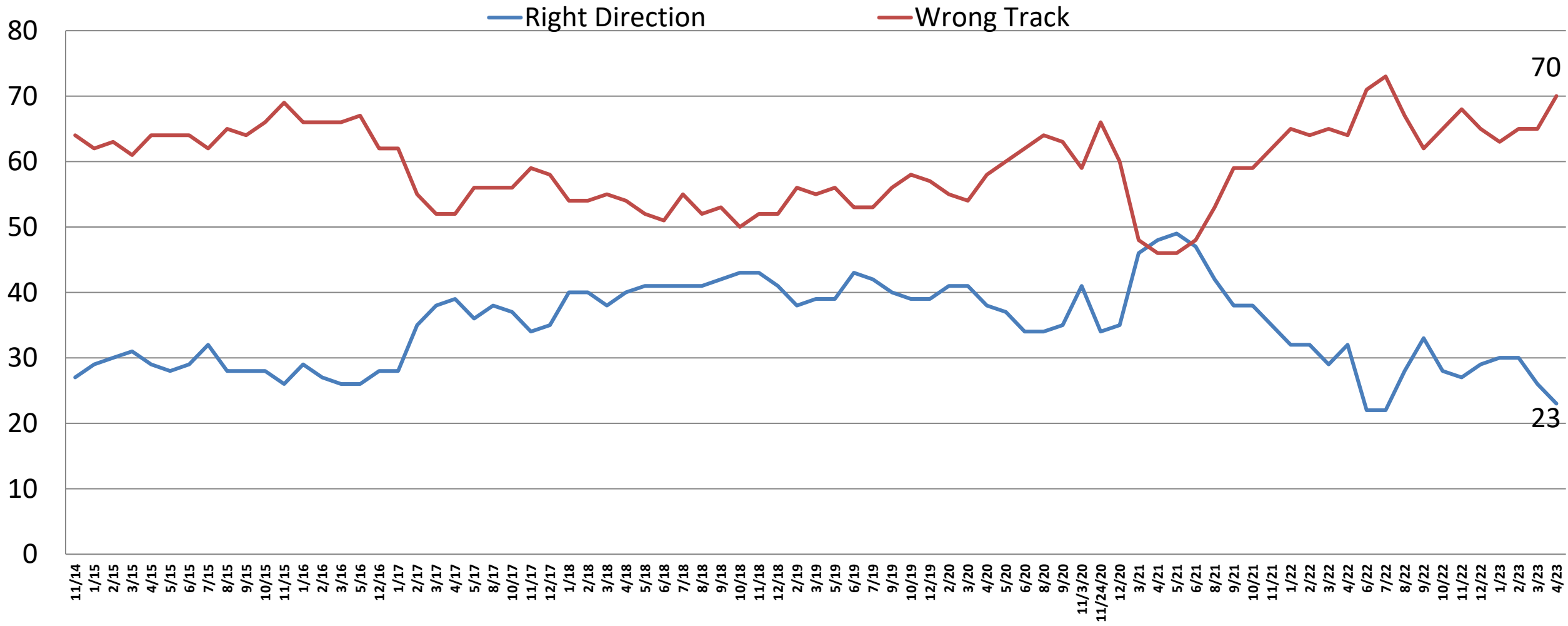
Political Environment, Trends & Analysis

Field Dates: April 24th-27th, 2023

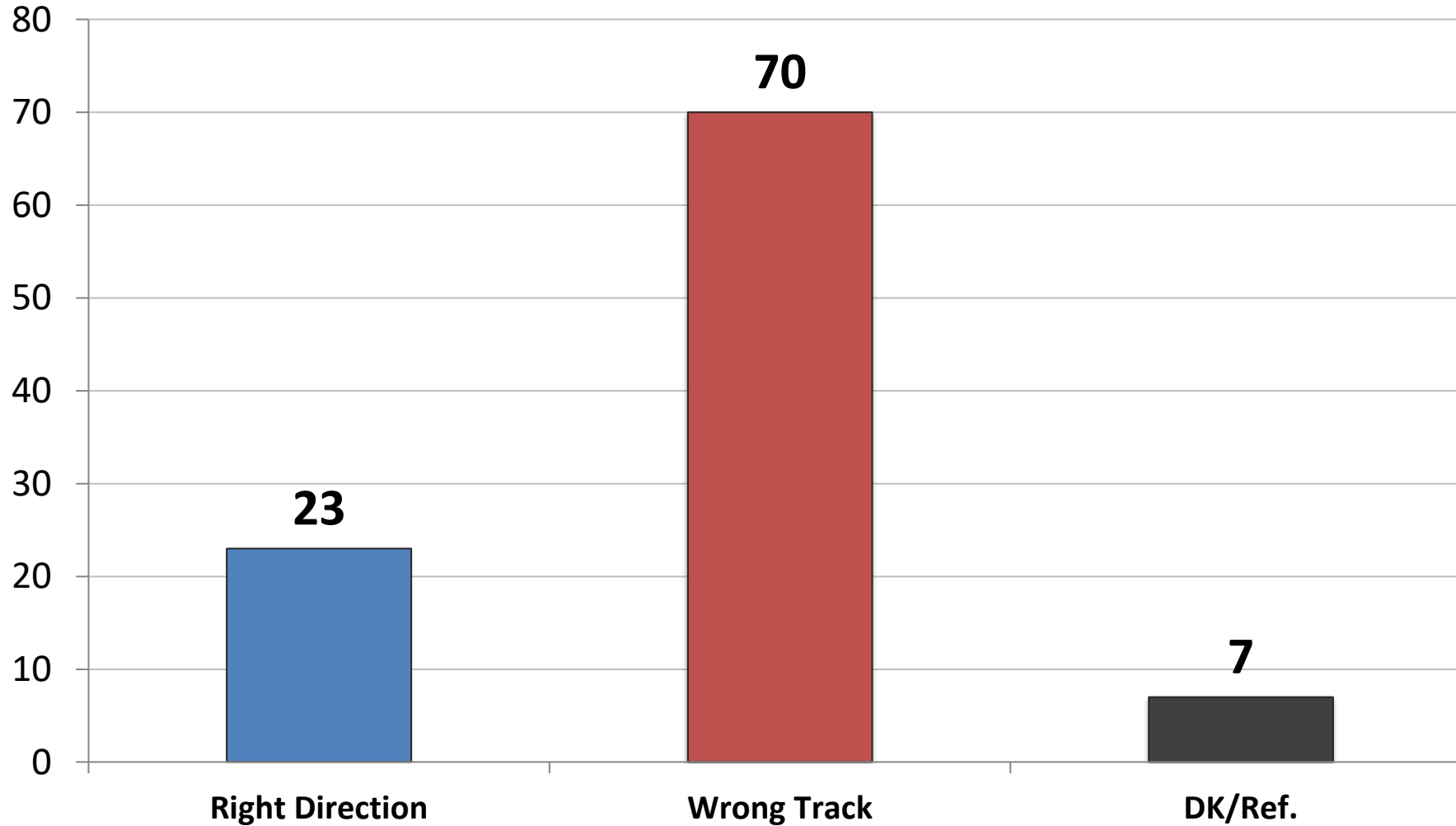
www.mclaughlinonline.com

Direction: *United States*

Time Series

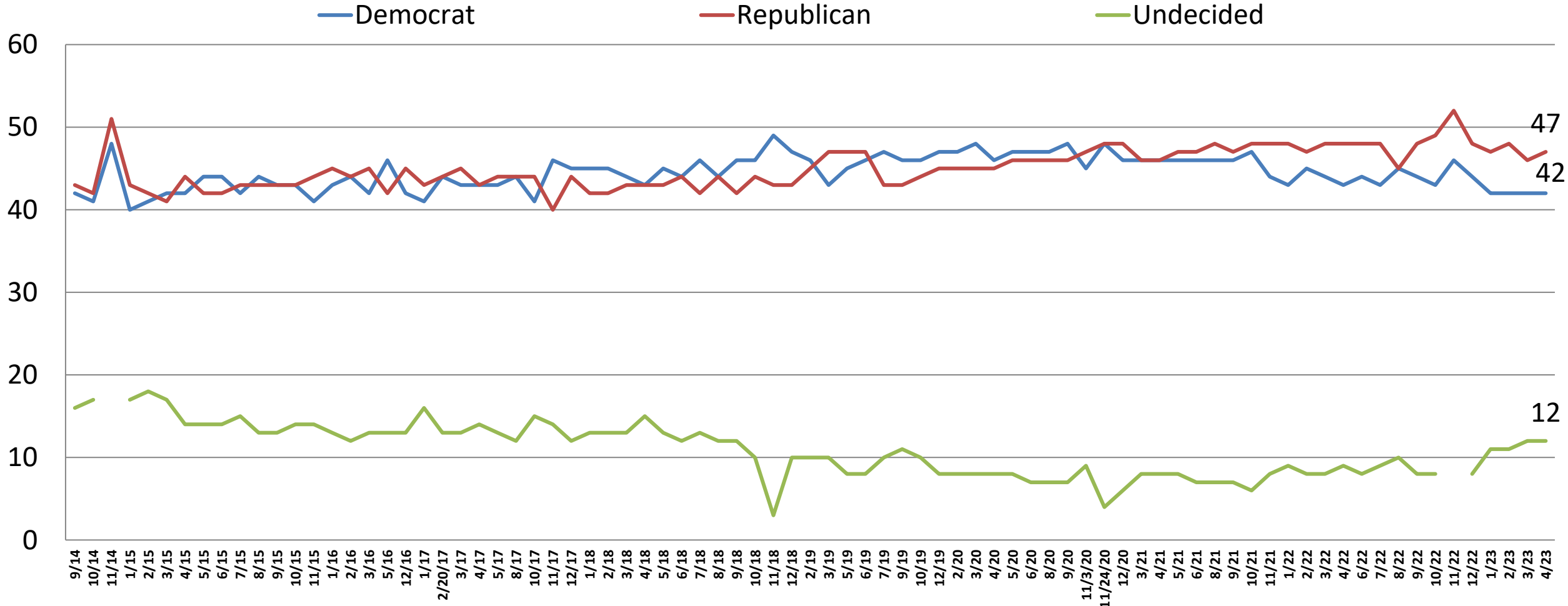


Direction: *United States*

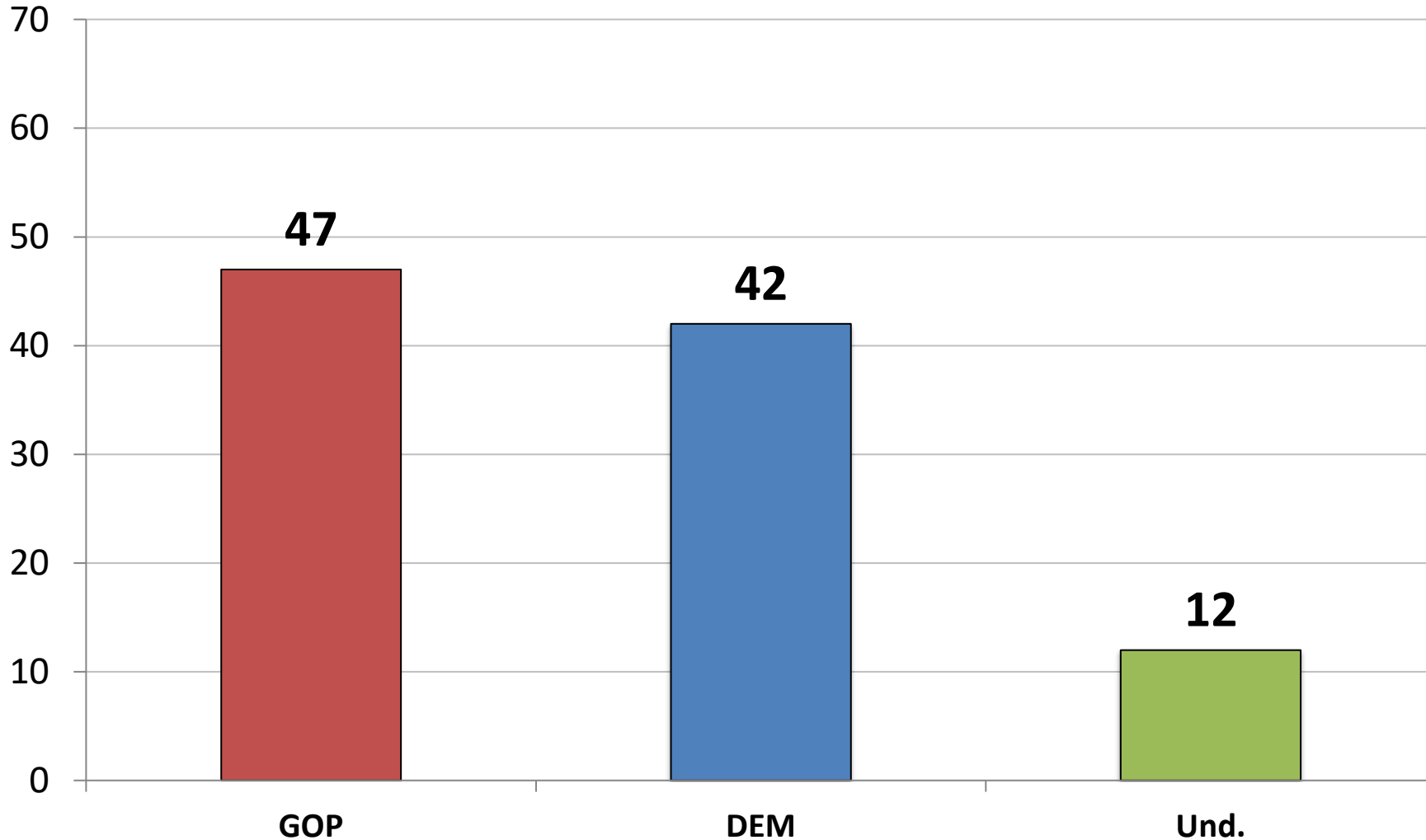


	<u>RD</u>	<u>WT</u>
East	24	69
Midwest	17	75
South	21	71
West	31	65
Vote Trump 2024	9	89
Vote Biden 2024	43	48
Vote Und. 2024	4	74
Generic: GOP	8	91
Generic: DEM	43	48
Generic: UND.	11	68
Approve Biden	50	40
Disapprove Biden	2	95
Republican	8	89
Democrat	45	45
Independent	12	79
Liberal	43	51
Moderate	22	67
Conservative	6	91
White	17	78
African- American	34	47
Hispanic	37	54
Under 55	22	70
Over 55	24	71
Married	24	71
Single	22	68
Men	26	71
Women	20	70
Live in Urban Area	35	58
Live in Suburban Area	19	73
Live in Rural Area	18	77

Generic Ballot: *U.S. Congress* Time Series



Generic Ballot: *U.S. Congress*

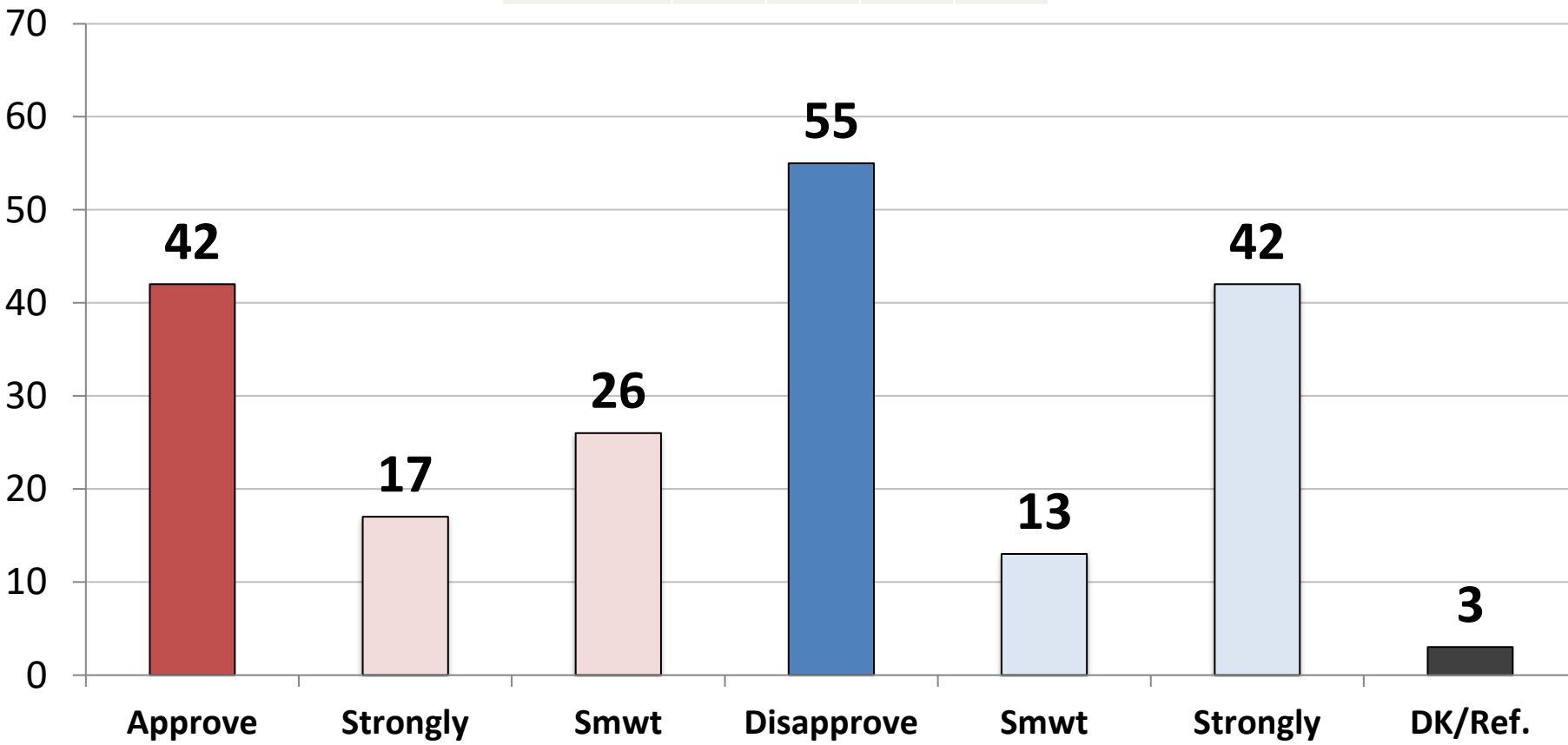


	<u>GOP</u>	<u>DEM.</u>	<u>UND.</u>
East	43	38	18
Midwest	52	37	12
South	52	40	8
West	35	52	13
Vote Trump 2024	88	5	7
Vote Biden 2024	4	86	10
Vote Und. 2024	34	27	40
Generic: GOP	100	0	0
Generic: DEM	0	100	0
Generic: UND.	0	0	100
Approve Biden	10	81	8
Disapprove Biden	76	12	12
Republican	97	1	3
Democrat	3	91	6
Independent	38	32	31
Liberal	14	82	4
Moderate	33	44	23
Conservative	89	5	6
White	57	31	11
African- American	10	80	10
Hispanic	38	47	15
Under 55	48	38	14
Over 55	44	47	9
Married	54	37	9
Single	40	44	16
Men	49	44	7
Women	44	40	16
Live in Urban Area	37	55	8
Live in Suburban Area	44	45	11
Live in Rural Area	61	22	17

Job Rating: *Joe Biden*

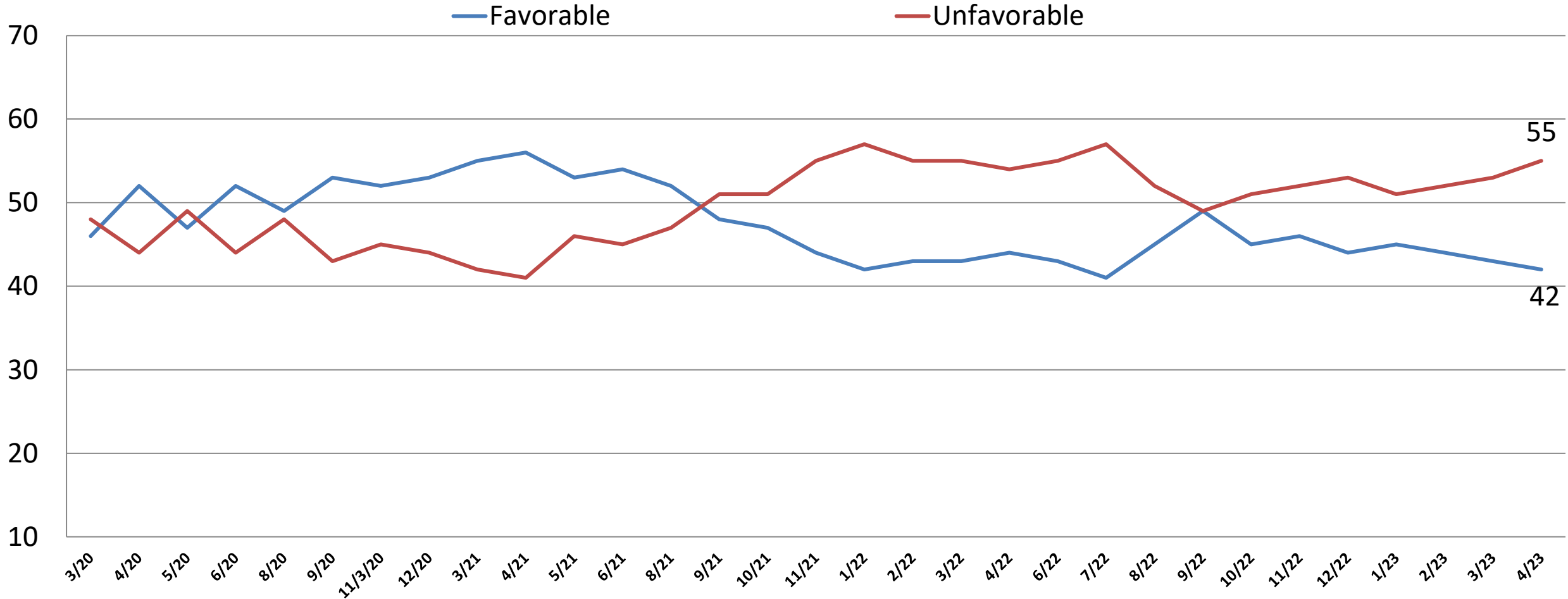
	1/23	2/23	3/23	4/23
Approve	45	44	44	42
Disapprove	53	54	54	55

	App.	Disapp.
East	40	57
Midwest	34	64
South	42	55
West	52	44
Vote Trump 2024	9	91
Vote Biden 2024	84	13
Vote Und. 2024	21	68
Generic: GOP	9	90
Generic: DEM	82	16
Generic: UND.	30	56
Approve Biden	100	0
Disapprove Biden	0	100
Republican	10	89
Democrat	81	16
Independent	34	61
Liberal	77	22
Moderate	45	50
Conservative	10	89
White	33	65
African- American	73	22
Hispanic	53	44
Under 55	39	57
Over 55	47	52
Married	40	58
Single	43	52
Men	43	56
Women	42	54
Live in Urban Area	53	45
Live in Suburban Area	43	54
Live in Rural Area	30	68

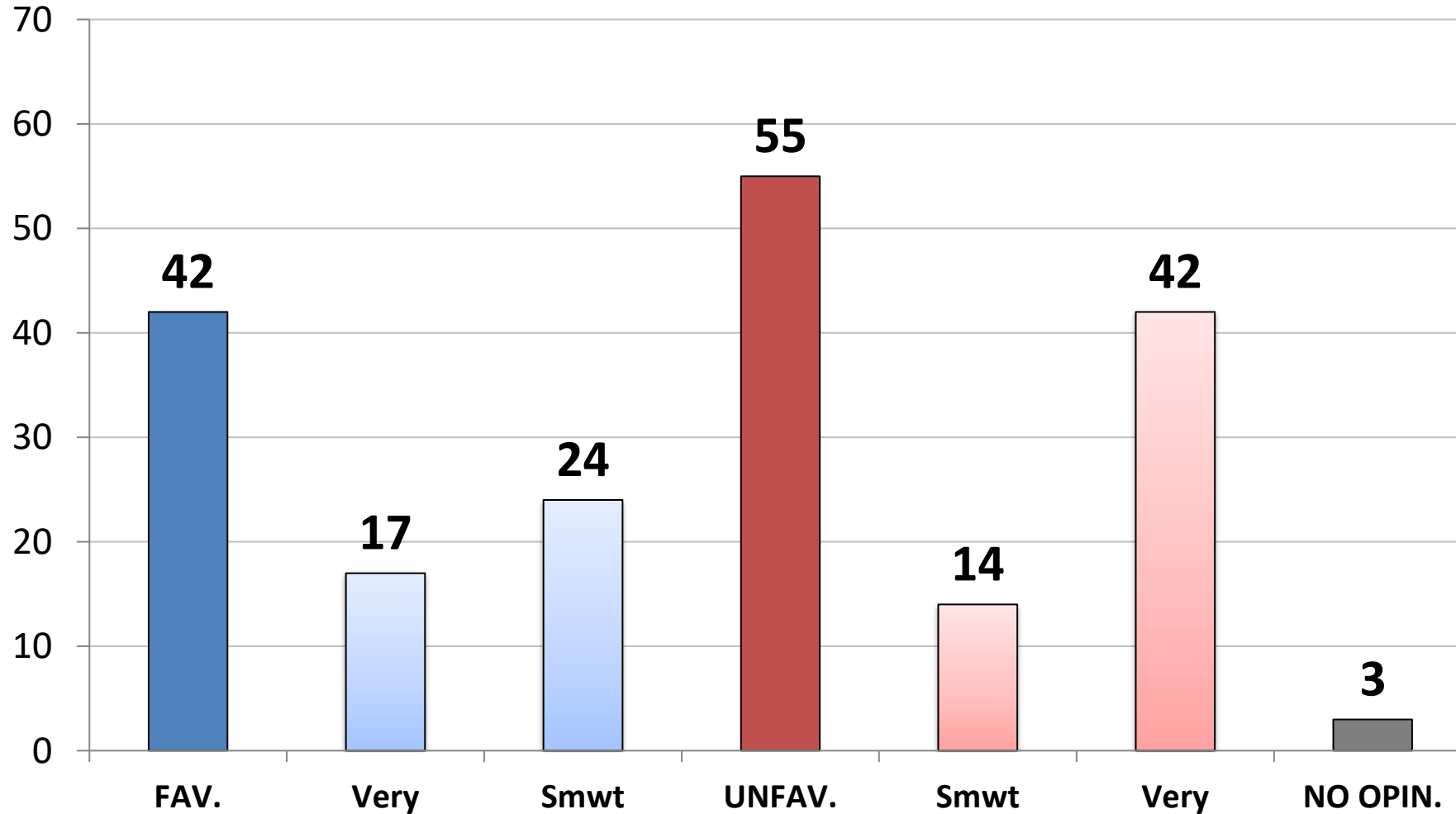


Opinion: *Joe Biden*

Time Series



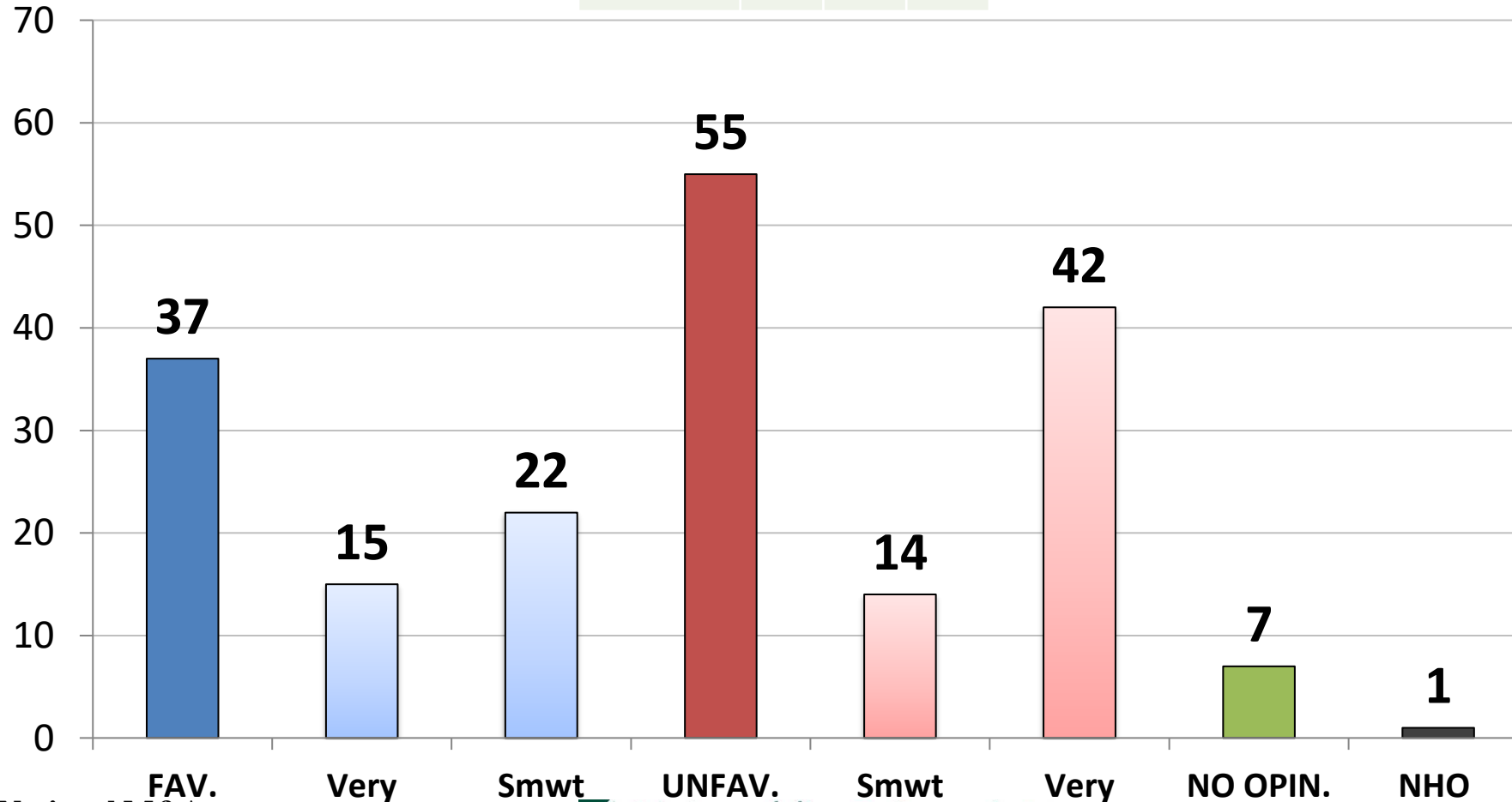
Opinion: *Joe Biden*



	Fav.	Unfav.
East	43	55
Midwest	31	66
South	44	54
West	48	47
Vote Trump 2024	7	91
Vote Biden 2024	84	13
Vote Und. 2024	26	65
Generic: GOP	7	91
Generic: DEM	83	16
Generic: UND.	35	55
Approve Biden	92	7
Disapprove Biden	4	94
Republican	8	90
Democrat	84	15
Independent	33	62
Liberal	76	21
Moderate	45	50
Conservative	10	89
White	32	66
African- American	75	19
Hispanic	55	41
Under 55	38	57
Over 55	47	52
Married	40	60
Single	41	53
Men	42	56
Women	42	54
Live in Urban Area	53	44
Live in Suburban Area	42	54
Live in Rural Area	30	68

Opinion: *Kamala Harris*

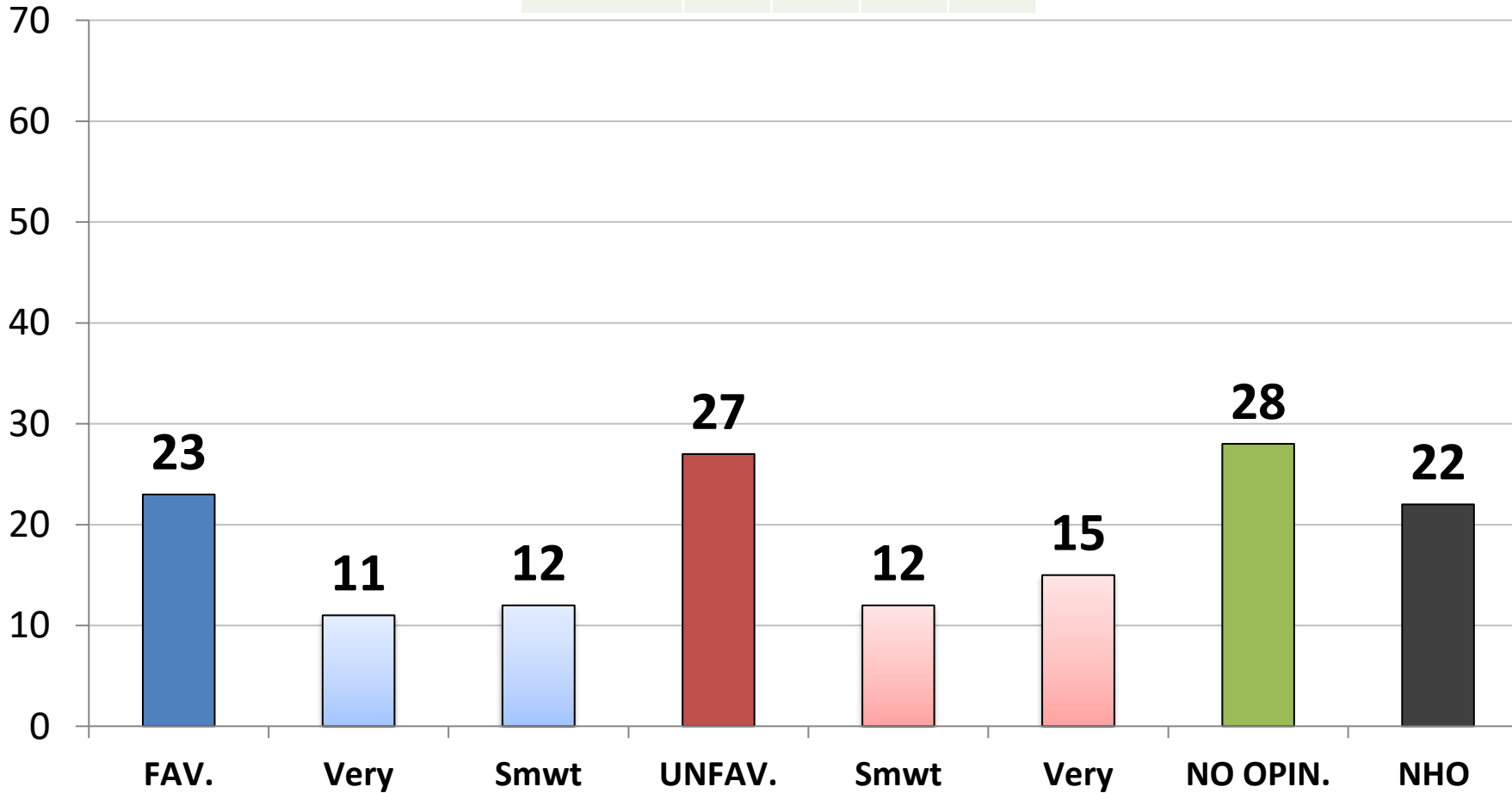
	2/23	3/23	4/23
Favorable	39	39	37
Unfavorable	52	53	55



	Fav.	Unfav.
East	37	54
Midwest	30	63
South	36	56
West	45	49
Vote Trump 2024	7	85
Vote Biden 2024	72	21
Vote Und. 2024	23	65
Generic: GOP	7	88
Generic: DEM	72	21
Generic: UND.	31	49
Approve Biden	75	18
Disapprove Biden	7	86
Republican	7	87
Democrat	76	19
Independent	25	62
Liberal	70	23
Moderate	37	50
Conservative	8	89
White	28	65
African- American	71	19
Hispanic	48	46
Under 55	34	55
Over 55	41	57
Married	32	63
Single	39	50
Men	36	59
Women	38	52
Live in Urban Area	48	45
Live in Suburban Area	37	57
Live in Rural Area	26	65

Opinion: *Hakeem Jeffries*

	1/23	2/23	3/23	4/23
Favorable	26	26	24	23
Unfavorable	24	23	25	27

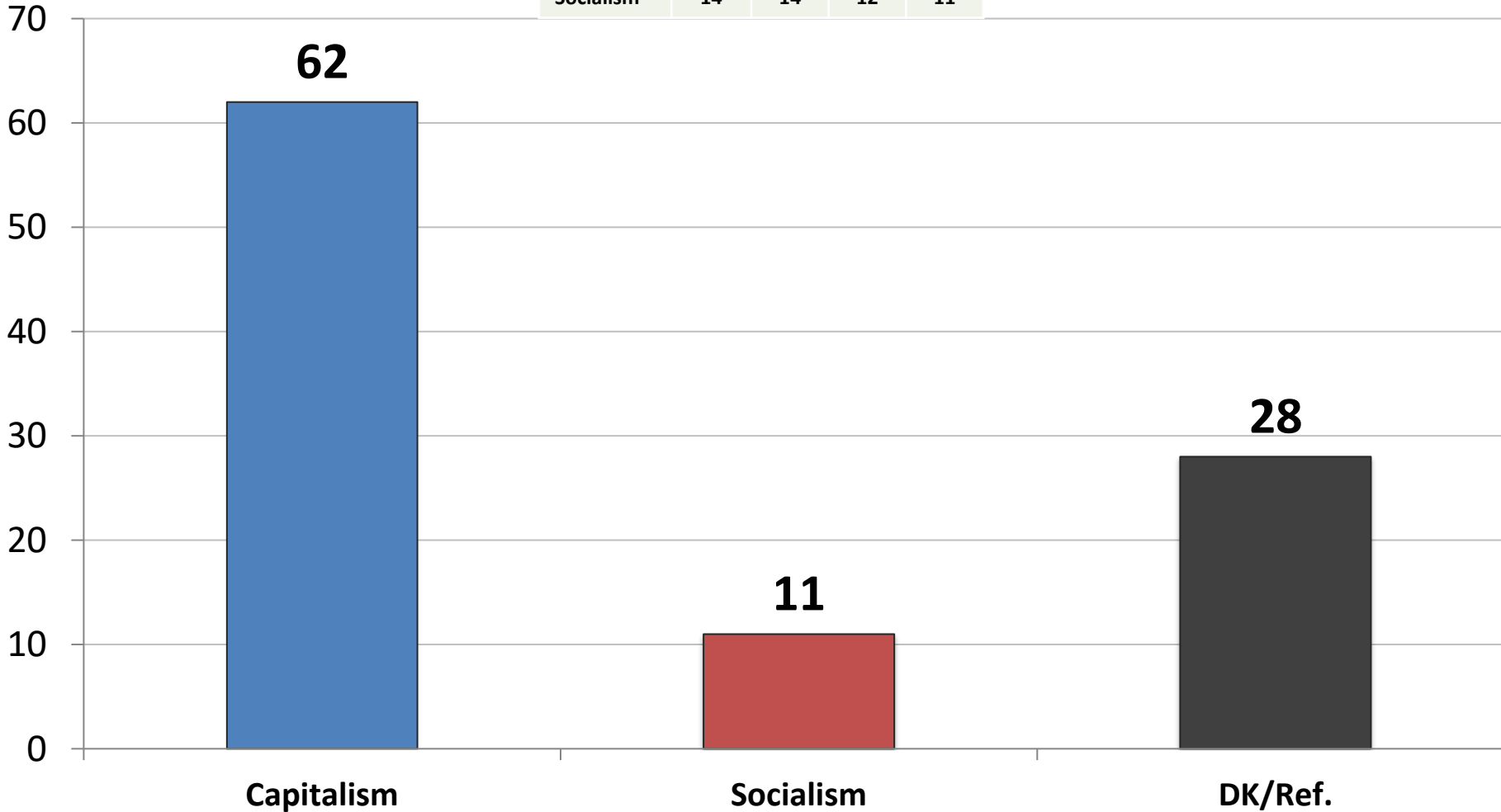


	Fav.	Unfav.
East	24	28
Midwest	19	29
South	22	28
West	28	22
Vote Trump 2024	9	40
Vote Biden 2024	42	12
Vote Und. 2024	10	25
Generic: GOP	8	43
Generic: DEM	43	11
Generic: UND.	8	16
Approve Biden	45	13
Disapprove Biden	7	38
Republican	6	42
Democrat	43	12
Independent	18	26
Liberal	46	15
Moderate	19	21
Conservative	7	43
White	18	31
African- American	44	8
Hispanic	25	21
Under 55	20	24
Over 55	27	30
Married	20	32
Single	24	21
Men	26	32
Women	20	22
Live in Urban Area	32	21
Live in Suburban Area	23	28
Live in Rural Area	14	31

All things being equal, do you prefer:

Free Market Capitalism OR, Big Government Socialism

	1/23	2/23	3/23	4/23
Capitalism	62	61	61	62
Socialism	14	14	12	11

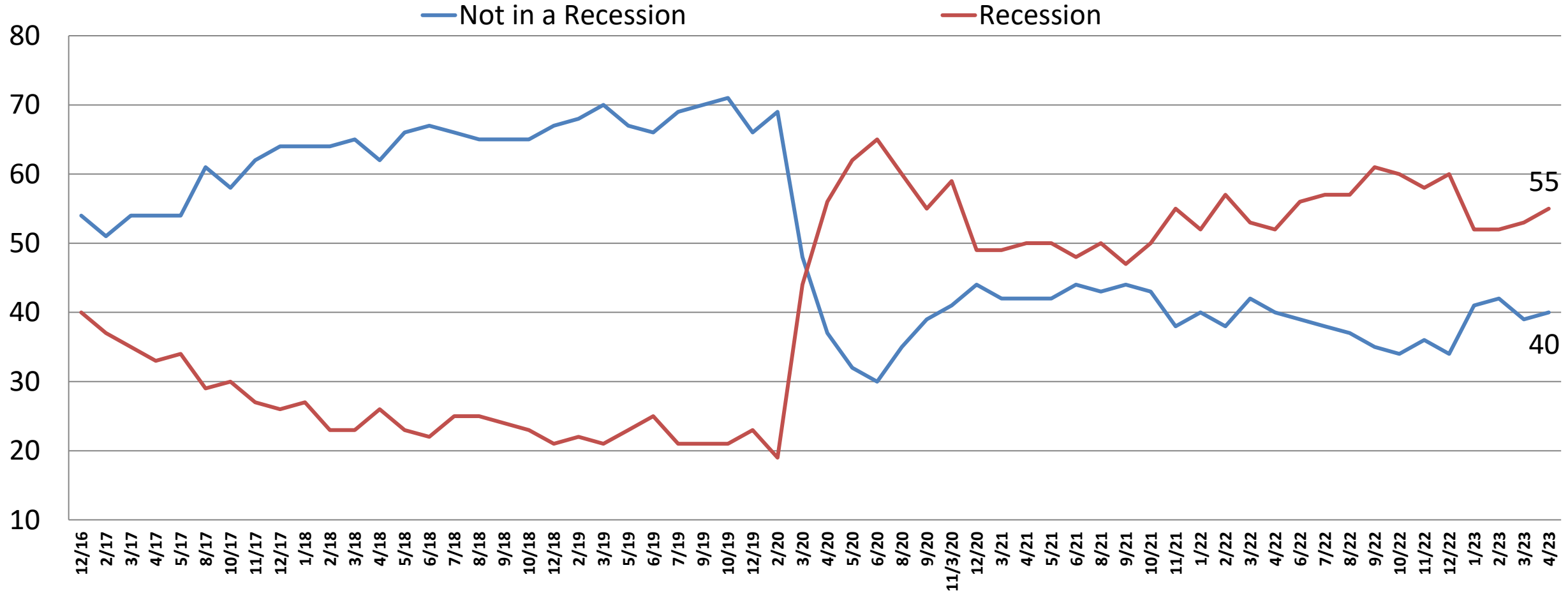


	Cap	Soc
East	62	12
Midwest	64	10
South	61	10
West	60	13
Vote Trump 2024	74	6
Vote Biden 2024	50	18
Vote Und. 2024	50	6
Generic: GOP	76	5
Generic: DEM	51	19
Generic: UND.	42	4
Approve Biden	50	20
Disapprove Biden	73	4
Republican	72	5
Democrat	50	19
Independent	63	8
Liberal	47	26
Moderate	59	7
Conservative	78	3
White	67	9
African- American	41	14
Hispanic	57	16
Under 55	55	13
Over 55	70	9
Married	67	9
Single	56	14
Men	75	11
Women	50	11
Live in Urban Area	60	15
Live in Suburban Area	63	10
Live in Rural Area	60	8

Now, from the following list, which issue is personally most important to you?

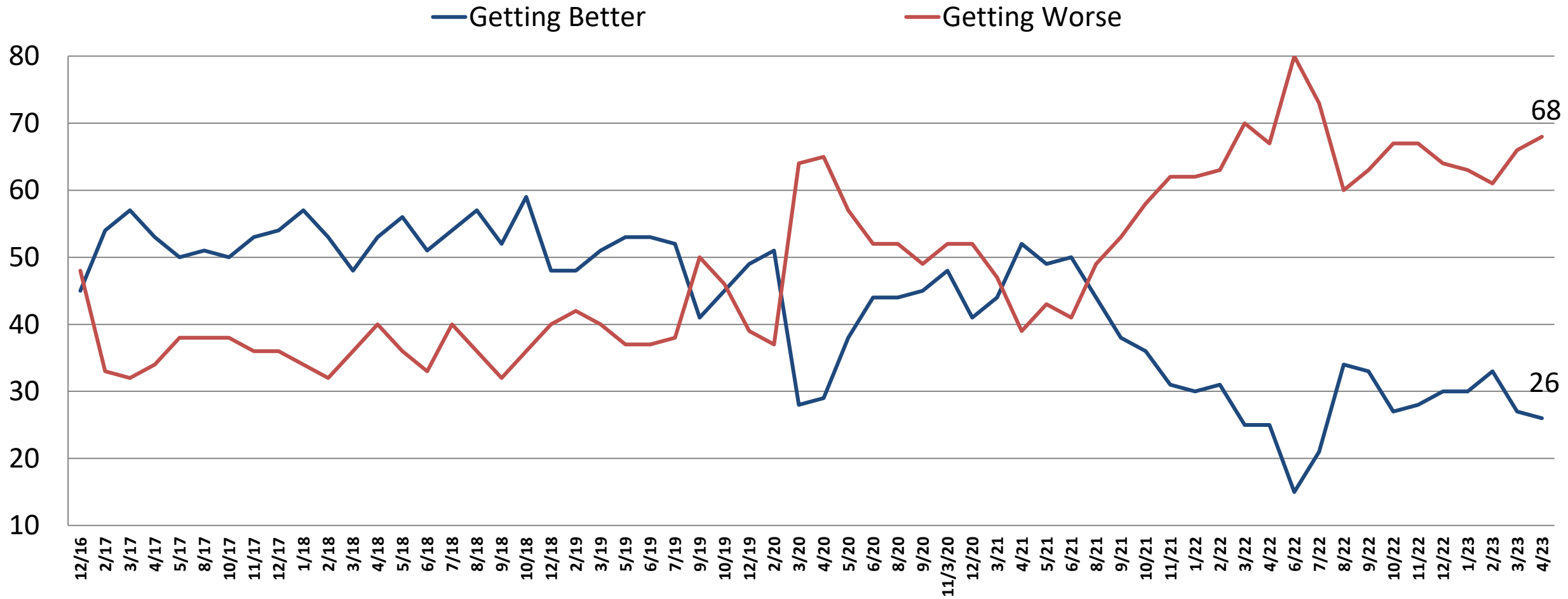
	<u>1/23</u>	<u>2/23</u>	<u>3/23</u>	<u>4/23</u>	<u>Rep</u>	<u>Dem</u>	<u>Ind</u>	<u>Lib</u>	<u>Mod</u>	<u>Cons</u>	<u>Under 55</u>	<u>Over 55</u>	<u>Men</u>	<u>Wo- men</u>
ECONOMIC	43	48	48	48	55	38	52	34	51	57	55	39	47	50
Reduce Inflation/COL	16	28	29	28	31	23	30	21	30	32	31	24	24	32
The Economy	13	10	9	11	14	8	11	9	12	13	14	8	11	11
Gov't Spending/Debt/Deficit*	6	4	4	4	6	1	5	0	3	8	3	5	6	2
Jobs/Unemployment*	2	3	3	3	2	5	3	4	4	2	5	2	3	4
Taxes	3	2	2	1	0	1	1	1	1	0	1	1	1	1
Gas/Energy Costs*	3	3	2	1	2	0	1	0	1	2	1	1	2	0
SOCIAL	27	31	29	30	16	46	27	53	26	14	27	34	29	31
Soc.Sec./Medicare	6	11	9	10	8	16	5	15	10	6	5	18	12	8
Climate Change/Environment	6	4	6	6	1	11	7	14	5	2	5	9	8	5
Health care	7	7	5	4	2	6	4	7	3	2	5	3	3	4
Abortion	4	4	4	5	2	7	6	11	2	2	6	3	3	7
Race Relations	2	2	2	3	1	5	2	4	3	1	3	1	1	4
Improving Education	3	3	2	3	2	3	3	2	3	2	4	1	2	3
SECURITY	14	13	13	14	22	7	11	6	13	21	12	16	16	12
Fix Immigration	8	4	5	5	10	1	4	1	3	11	3	7	7	4
National Security/Terrorism	3	3	3	3	5	1	2	1	3	4	3	3	3	3
Fight Crime/Law & Order	3	3	3	4	4	4	4	3	5	4	4	5	5	4
Russia-Ukraine War	*	2	1	1	2	0	1	0	2	1	1	1	1	1
China	*	1	1	0	0	1	0	0	1	0	1	0	0	1
HONESTY/INTEGRITY/D.C	8	4	6	5	3	4	7	5	6	3	4	7	5	5
Election Integrity*	2	2	1	2	1	2	1	2	1	2	1	3	2	1
COVID/Stop Spread	3	1	1	1	0	1	1	0	2	1	1	0	1	1
RE-EXAMINING 2020 ELEC.	1	*	*	*	*	*	*	*	*	*	*	*	*	*
DK/Refused	2	1	2	1	2	1	1	1	1	2	2	1	1	2

Opinion: *U.S. Economy* *Time Series*



Opinion: *U.S. Economy* (Cont.)

Time Series



Current Opinion of the U.S. Economy

Time Series

	<u>1/23</u>	<u>2/23</u>	<u>3/23</u>	<u>4/23</u>	<u>Rep</u>	<u>Dem</u>	<u>Ind</u>	<u>Lib</u>	<u>Mod</u>	<u>Con</u>	<u>Under 55</u>	<u>Over 55</u>	<u>Men</u>	<u>Women</u>
NOT RECESSION	41	42	39	40	34	49	36	55	37	31	37	44	46	35
Getting Better	15	19	14	14	5	25	11	30	10	5	11	18	17	11
Getting Worse	26	23	25	26	29	24	25	25	27	26	26	26	28	24
RECESSION	52	52	53	55	64	44	56	39	56	67	57	51	52	58
Getting Better	15	14	13	13	7	19	10	16	14	7	12	13	14	12
Getting Worse	37	38	41	42	57	25	46	23	42	60	45	38	38	46
D.K./REF.	7	6	8	5	2	6	8	6	8	2	6	5	3	8
GETTING BETTER	30	33	27	26	13	44	21	47	24	12	23	31	31	23
GETTING WORSE	63	61	66	68	85	49	71	47	68	86	71	64	66	70
D.K./REF.	7	6	8	5	2	6	8	6	8	2	6	5	3	8
Net Diff.	-34	-27	-39	-42	-73	-5	-49	-1	-45	-74	-48	-33	-35	-47

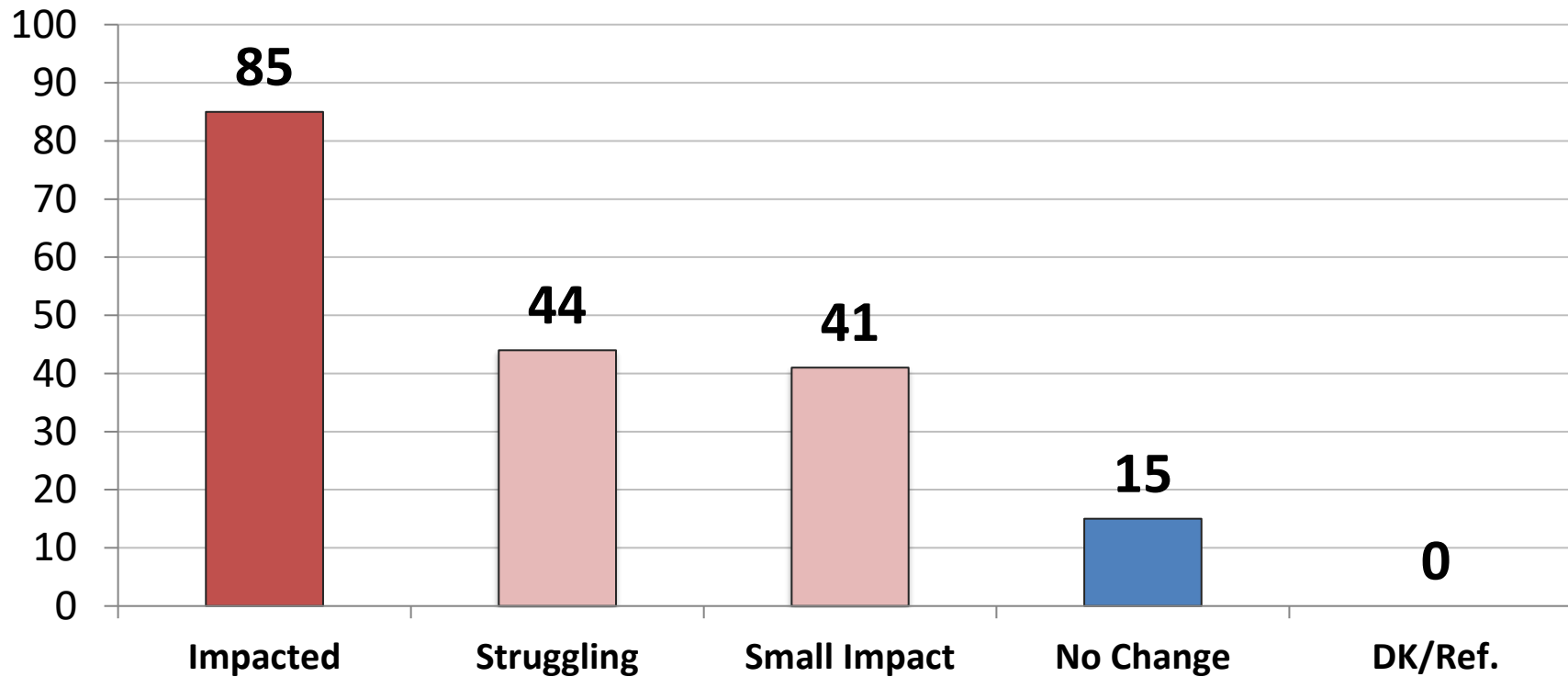
Which of the following best describes how inflation and higher costs have impacted your personal and household financial situation?

With inflation and higher prices, we are struggling to keep up and afford basic necessities.

We are not struggling but inflation and higher prices have had a significant impact on our finances and spending.

Despite inflation and higher prices, we are still able to afford our normal spending without cutting back.

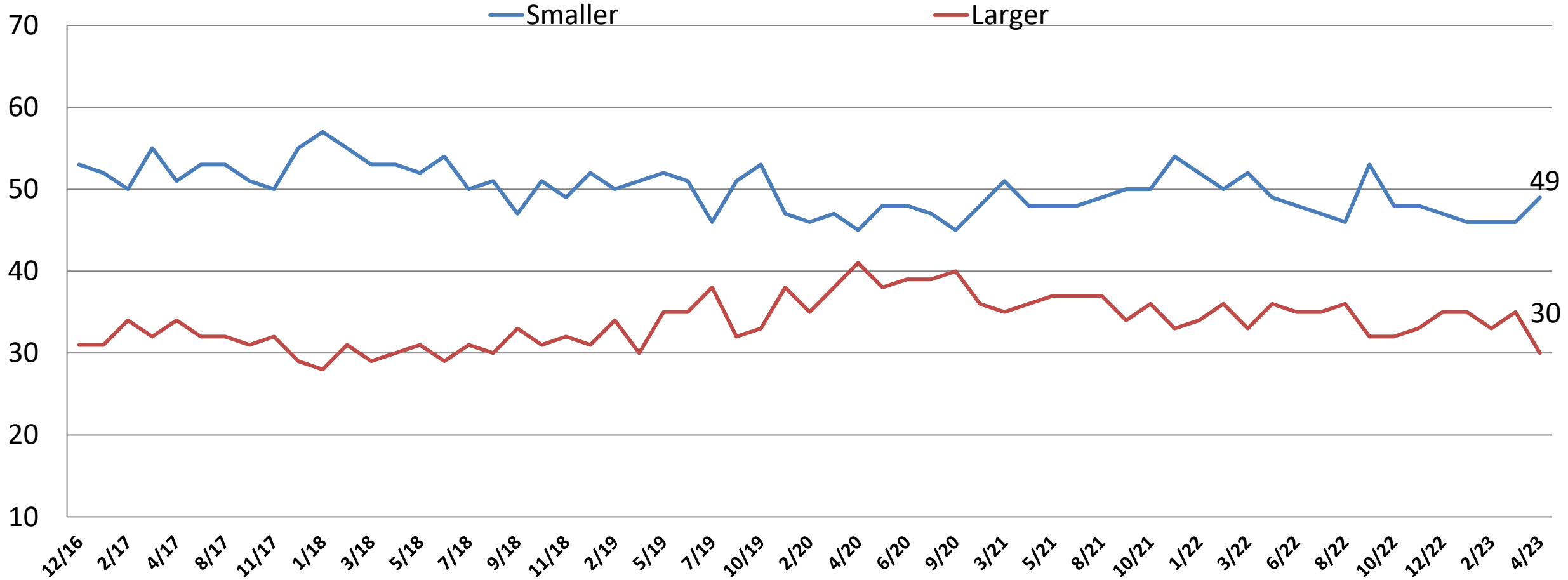
	6/22	7/22	8/22	9/22	10/22	11/22	12/22	1/23	2/23	3/23	3/23
Impacted	81	84	81	81	84	83	82	79	79	85	85
Struggling	42	43	43	43	47	47	42	40	37	42	44
Impact/Not Struggling	39	41	39	38	38	36	40	40	42	43	41
Not Cutting Back	17	16	19	19	16	17	18	20	21	15	15



	Struggle	Small Impact	No Change
East	39	46	15
Midwest	45	43	13
South	45	40	15
West	45	36	19
Vote Trump 2024	53	37	10
Vote Biden 2024	34	45	21
Vote Und. 2024	44	41	16
Generic: GOP	50	37	13
Generic: DEM	34	46	20
Generic: UND.	53	37	11
Approve Biden	35	43	22
Disapprove Biden	51	39	11
Republican	48	38	14
Democrat	36	45	19
Independent	48	40	12
Liberal	36	42	22
Moderate	44	44	12
Conservative	50	37	13
White	45	40	15
African- American	40	46	14
Hispanic	49	33	18
Under 55	50	39	11
Over 55	36	43	21
Married	35	46	18
Single	51	37	13
Men	40	42	19
Women	47	40	12
Live in Urban Area	47	37	16
Live in Suburban Area	41	44	15
Live in Rural Area	46	38	15

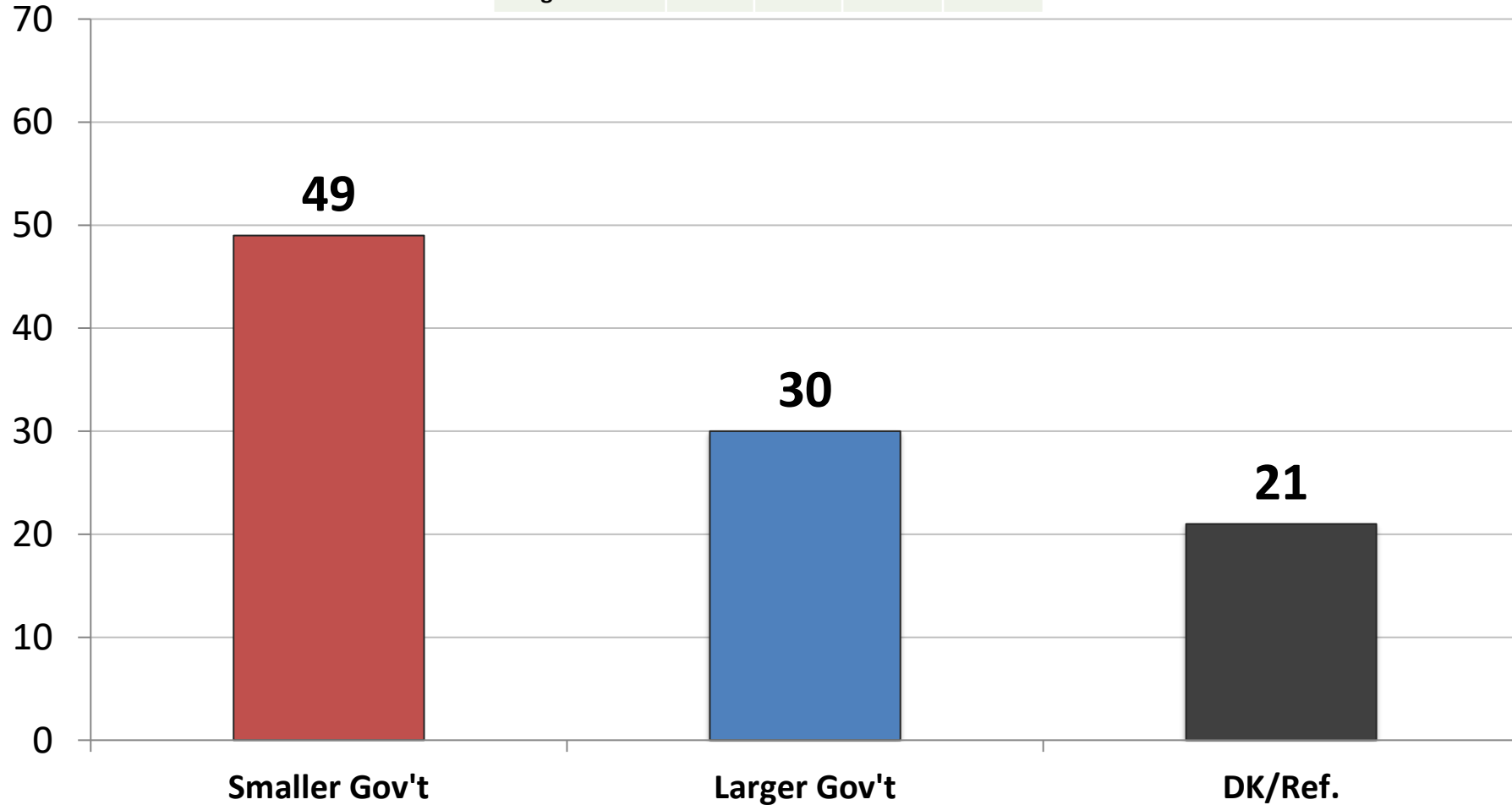
Would you say you most favor a smaller government with fewer services or a larger government with many services?

Time Series



Would you say you most favor a smaller government with fewer services or a larger government with many services?

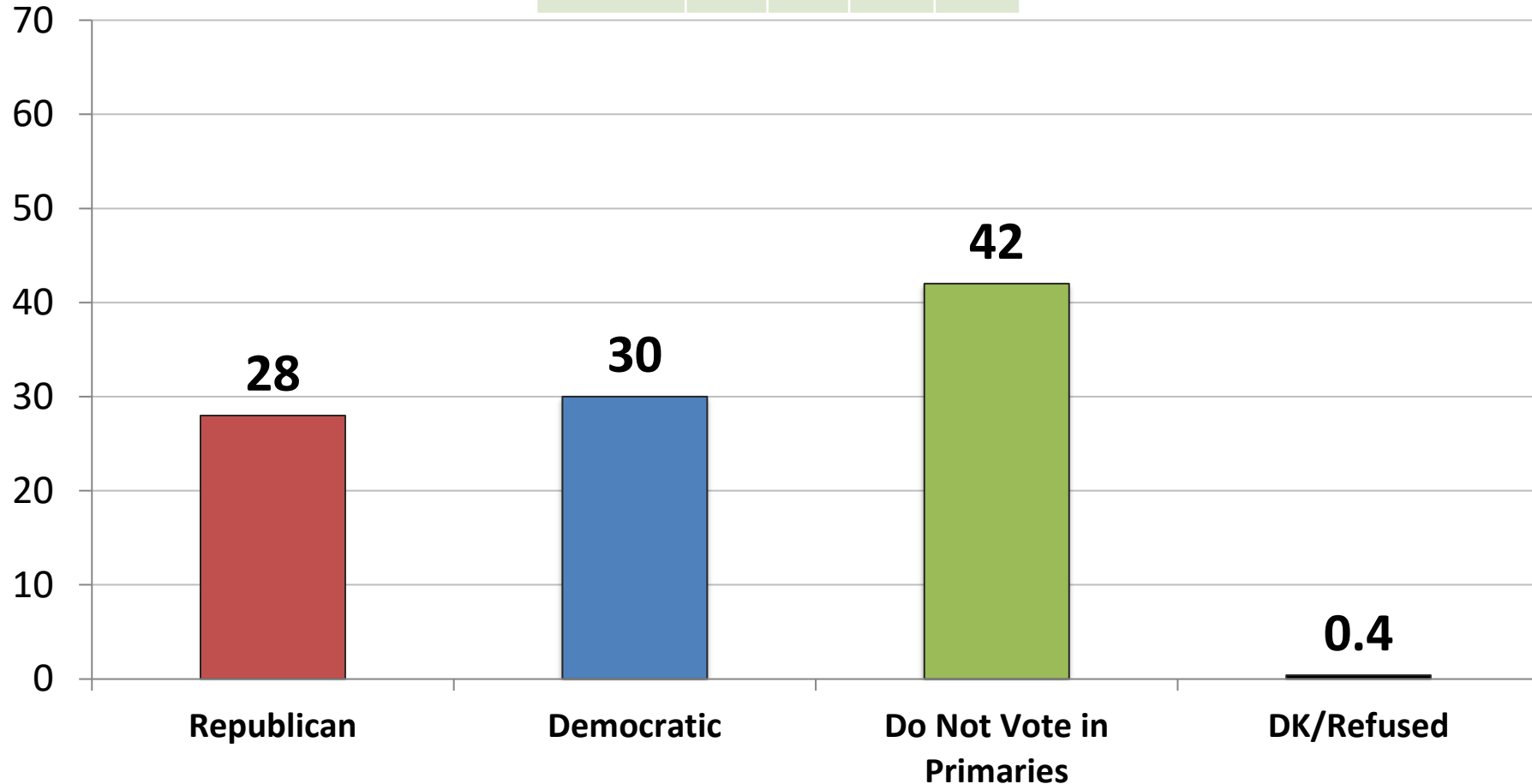
	1/23	2/23	3/23	4/23
Smaller Gov't	46	46	46	49
Larger Gov't	35	33	35	30



	Smaller	Larger
East	52	32
Midwest	53	26
South	50	27
West	41	40
Vote Trump 2024	69	15
Vote Biden 2024	27	50
Vote Und. 2024	52	18
Generic: GOP	72	14
Generic: DEM	26	51
Generic: UND.	39	19
Approve Biden	29	50
Disapprove Biden	66	16
Republican	70	15
Democrat	25	50
Independent	52	24
Liberal	26	57
Moderate	45	26
Conservative	73	12
White	56	26
African- American	25	39
Hispanic	40	35
Under 55	45	30
Over 55	55	31
Married	58	27
Single	39	35
Men	58	31
Women	41	30
Live in Urban Area	46	34
Live in Suburban Area	48	32
Live in Rural Area	55	22

INDEPENDENTS ONLY: Thinking ahead to the 2024 primary election for President, in which party's primary are you more likely to vote – the Republican primary or the Democratic primary
(n=280)

	1/23	2/23	3/23	4/23
Republican	35	29	37	28
Democrat	29	29	29	30
Don't Vote	36	42	35	42



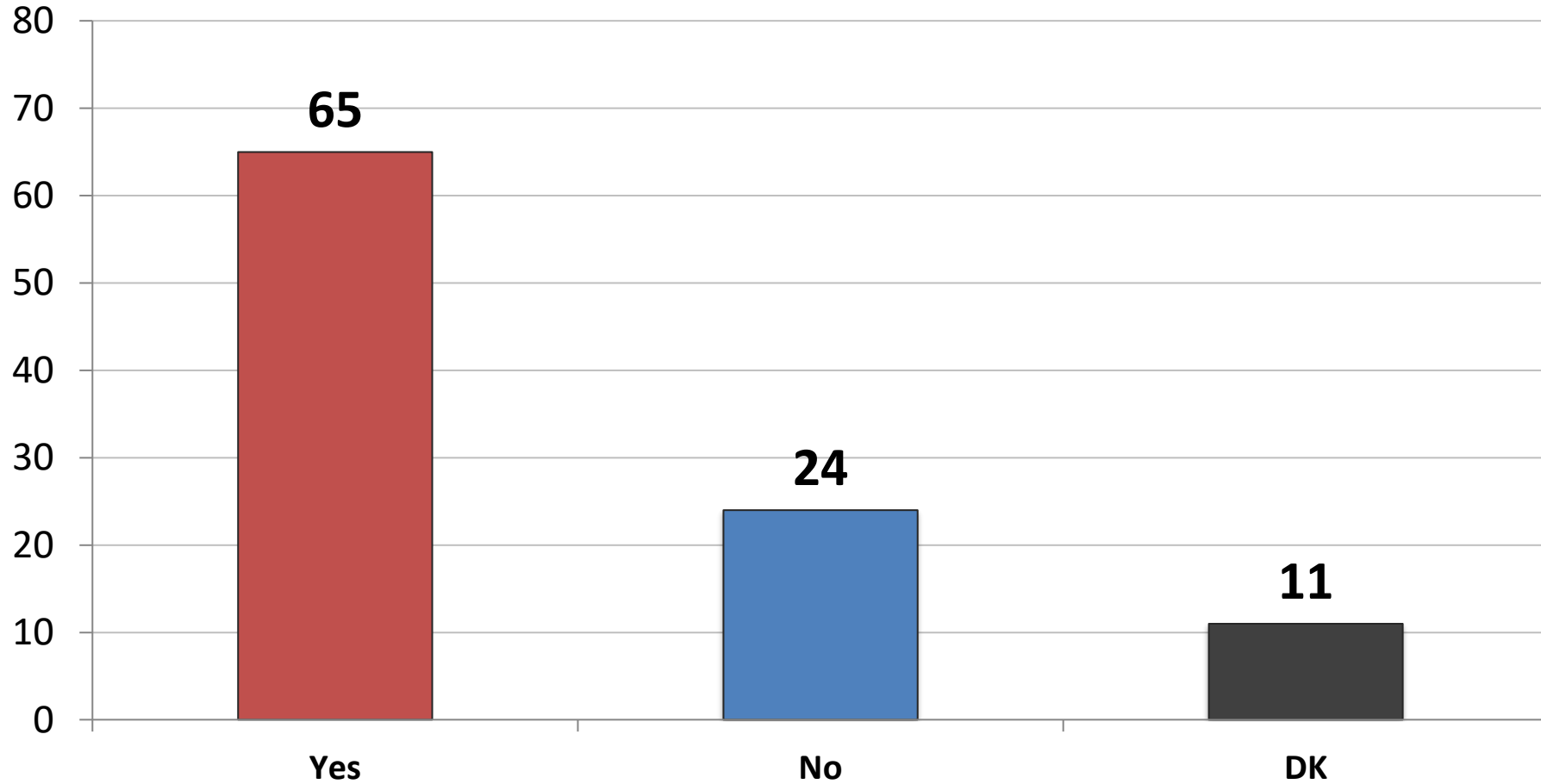
	<u>GOP</u>	<u>DEM</u>
East	31	22
Midwest	32	23
South	22	34
West	27	39
Vote Trump 2024	59	8
Vote Biden 2024	8	55
Vote Und. 2024	5	20
Generic: GOP	60	6
Generic: DEM	4	70
Generic: UND.	12	17
Approve Biden	9	54
Disapprove Biden	40	17
Republican	0	0
Democrat	0	0
Independent	28	30
Liberal	17	57
Moderate	20	27
Conservative	56	14
White	30	25
African- American	0	67
Hispanic	30	41
Under 55	29	30
Over 55	25	30
Married	32	30
Single	27	29
Men	34	27
Women	22	33
Live in Urban Area	29	39
Live in Suburban Area	23	30
Live in Rural Area	37	20

Thinking ahead to the 2024 Democratic primary election for President, if that election were held today among the following candidates, for whom would you vote? (Democrat Primary Voters)

4/23: N=443	1/23	2/23	3/23	4/23
Joe Biden	25	26	23	25
Michelle Obama	14	14	16	15
Kamala Harris	6	6	8	8
Bernie Sanders	5	8	7	8
Pete Buttigieg	7	7	6	5
Hillary Clinton	6	4	5	4
Alexandria Ocasio-Cortez	5	3	3	2
Gavin Newsom	7	3	3	4
Beto O'Rourke	2	2	3	3
Cory Booker	1	2	2	3
Amy Klobuchar	2	2	2	2
Kirsten Gillibrand	1	1	1	0
Joe Manchin	1	1	1	0
Deval Patrick	0	0	1	1
John Hickenlooper	0	1	1	0
Phil Murphy	0	2	1	0
Tim Kaine	1	1	1	0
Tom Steyer	0	1	1	0
Eric Adams	0	0	0	0
Jared Polis	1	1	0	0
Marianne Williamson	*	*	*	1
Robert F. Kennedy, Jr.	*	*	*	2
Undecided	13	12	16	16

Do you want to see Donald Trump run for President again in 2024? (Republican Primary Voters n=437)

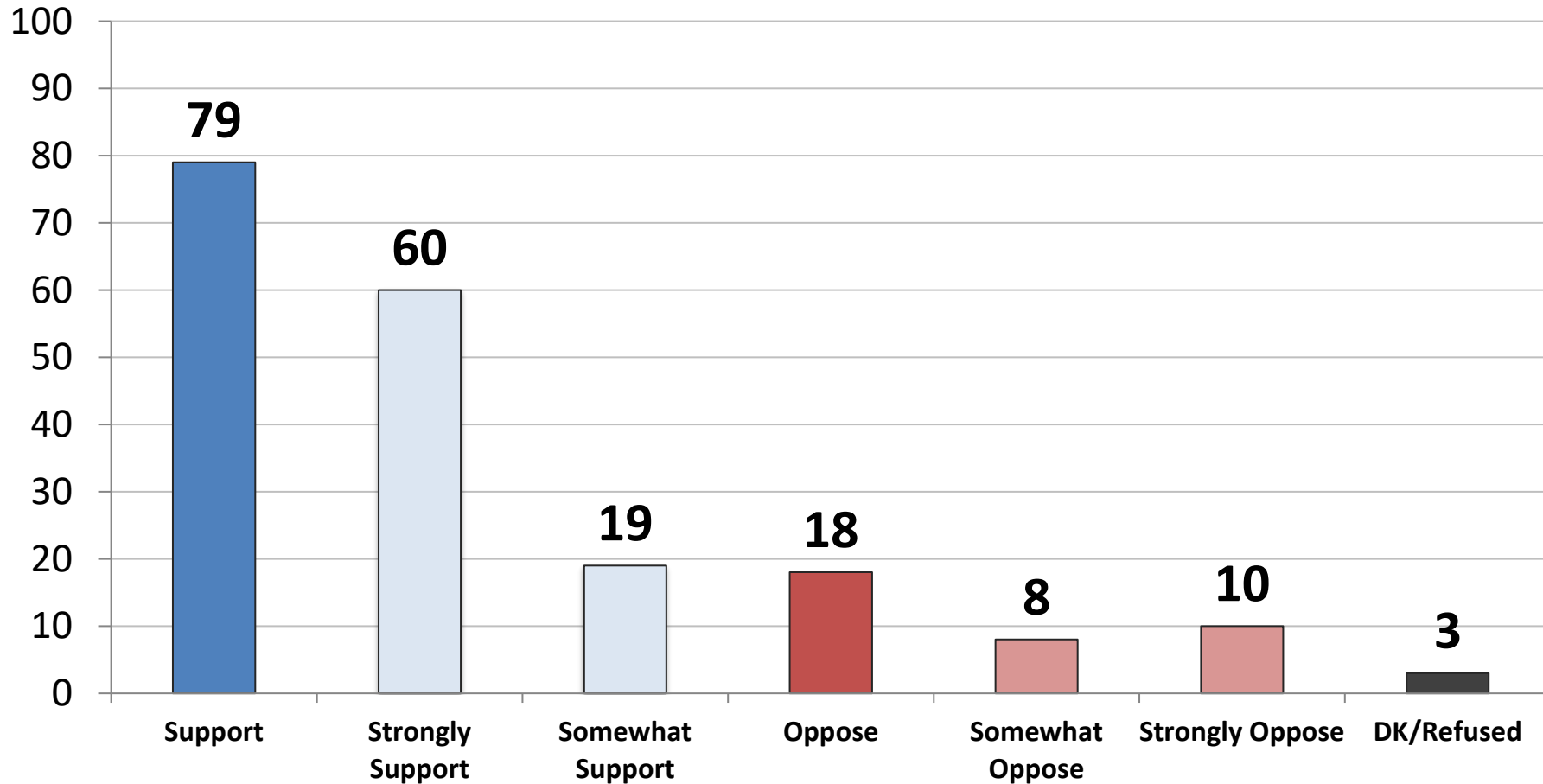
	1/23	2/23	3/23	4/23
Yes	58	57	61	65
No	33	32	30	24



	Yes	No
East	64	29
Midwest	68	21
South	63	24
West	68	20
Vote Trump 2024	73	16
Vote Biden 2024	3	98
Vote Und. 2024	8	74
Generic: GOP	67	21
Generic: DEM	26	74
Generic: UND.	40	53
Approve Biden	36	57
Disapprove Biden	69	20
Republican	67	22
Democrat	0	0
Independent	55	33
Liberal	75	17
Moderate	57	35
Conservative	67	20
White	66	22
African- American	25	60
Hispanic	68	28
Under 55	71	20
Over 55	57	28
Married	58	28
Single	72	22
Men	57	32
Women	74	16
Live in Urban Area	78	13
Live in Suburban Area	57	32
Live in Rural Area	70	17

If Donald Trump ran for President again in 2024, would you support or oppose him for the Republican nomination? (Republican Primary Voters n=437)

	1/23	2/23	3/23	4/23
Support	72	76	74	79
Oppose	23	20	22	18



	Support	Oppose
East	76	21
Midwest	82	17
South	77	18
West	83	15
Vote Trump 2024	87	10
Vote Biden 2024	11	89
Vote Und. 2024	16	64
Generic: GOP	81	15
Generic: DEM	20	80
Generic: UND.	44	56
Approve Biden	50	48
Disapprove Biden	82	14
Republican	81	16
Democrat	0	0
Independent	67	28
Liberal	77	23
Moderate	71	25
Conservative	82	15
White	80	17
African- American	53	47
Hispanic	80	17
Under 55	81	14
Over 55	76	23
Married	74	23
Single	85	10
Men	75	24
Women	83	12
Live in Urban Area	87	13
Live in Suburban Area	73	23
Live in Rural Area	83	13

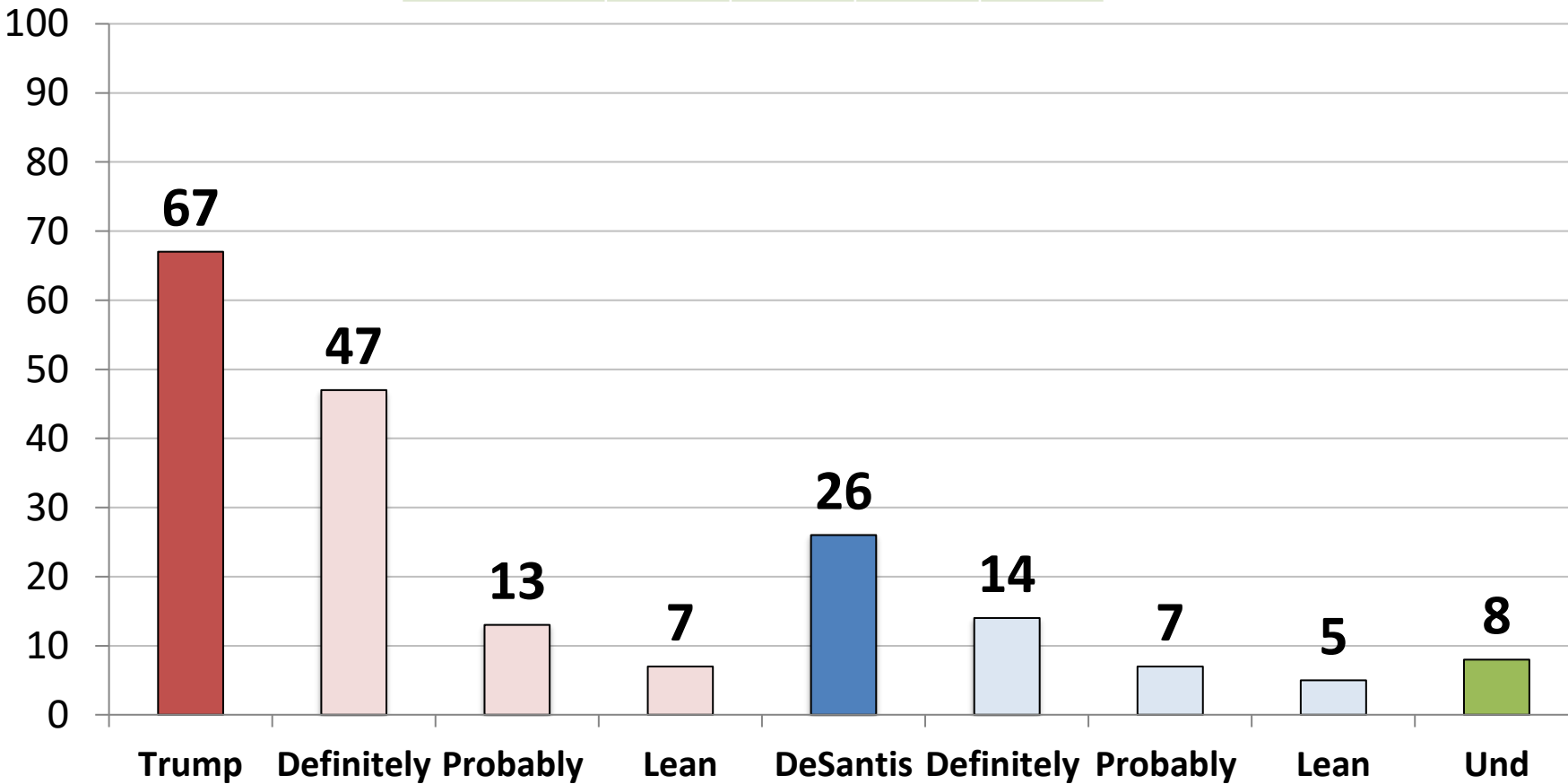
Thinking ahead to the 2024 Republican primary election for President, if that election were held today among the following candidates, for whom would you vote? (*Republican Primary Voters*)

4/23: N=437	1/23	2/23	3/23	4/23
Donald Trump	43	42	46	52
Ron DeSantis	31	26	23	16
Mike Pence	5	5	8	6
Nikki Haley	3	6	5	4
Mitt Romney	2	3	3	2
Liz Cheney	3	2	3	1
Greg Abbott	0	1	1	1
Chris Sununu	0	1	1	0
John Bolton	0	1	1	1
Glen Youngkin	1	1	1	1
Tim Scott	1	1	1	2
Vivek Ramaswamy	*	1	0	4
Kristi Noem	*	*	*	2
Chris Christie	*	*	*	1
Asa Hutchinson	*	*	*	1
Will Hurd	*	*	*	1
Larry Elder	*	*	*	0
Undecided	8	9	8	7

Now, if the 2024 Republican Primary Presidential election were held today, which one of the following best describes how you would vote in the Republican Primary election for President between Donald Trump and Ron DeSantis?

(n=437)

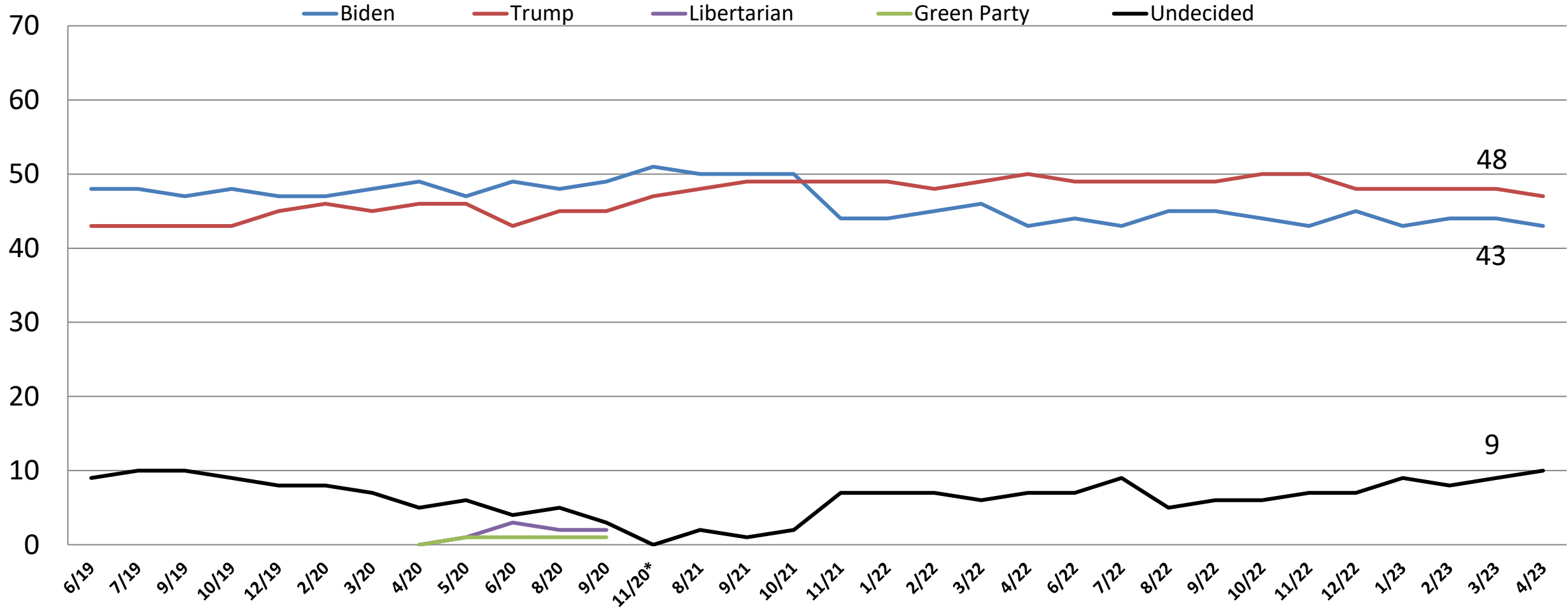
	1/23	2/23	3/23	4/23
Trump	52	56	61	67
DeSantis	41	38	31	26
Undecided	7	6	8	8



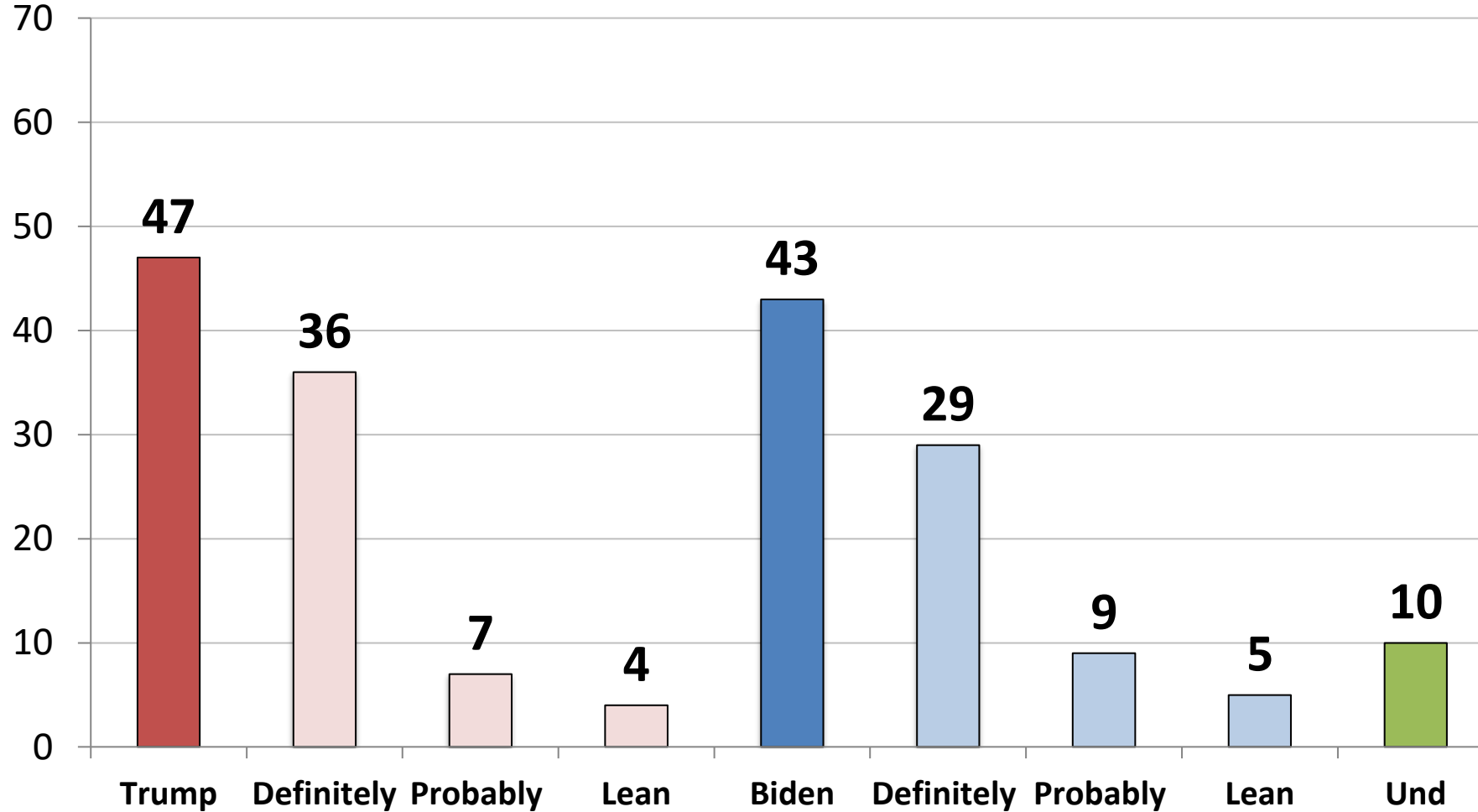
	Trump	DeSantis	Und.
East	66	26	8
Midwest	71	19	10
South	65	28	8
West	67	30	2
Vote Trump 2024	74	23	3
Vote Biden 2024	7	44	50
Vote Und. 2024	12	49	39
Generic: GOP	68	26	6
Generic: DEM	26	20	54
Generic: UND.	47	18	36
Approve Biden	58	16	26
Disapprove Biden	68	27	5
Republican	69	26	6
Democrat	0	0	0
Independent	59	25	16
Liberal	89	0	11
Moderate	66	21	13
Conservative	65	30	5
White	66	27	7
African- American	66	11	23
Hispanic	76	20	4
Under 55	73	19	8
Over 55	58	35	7
Married	58	34	8
Single	77	16	8
Men	60	32	8
Women	74	19	7
Live in Urban Area	73	20	7
Live in Suburban Area	61	31	9
Live in Rural Area	72	21	7

If the general election for President were held today, would you be more likely to vote for Donald Trump, the Republican candidate or Joe Biden, the Democratic candidate?

Time Series

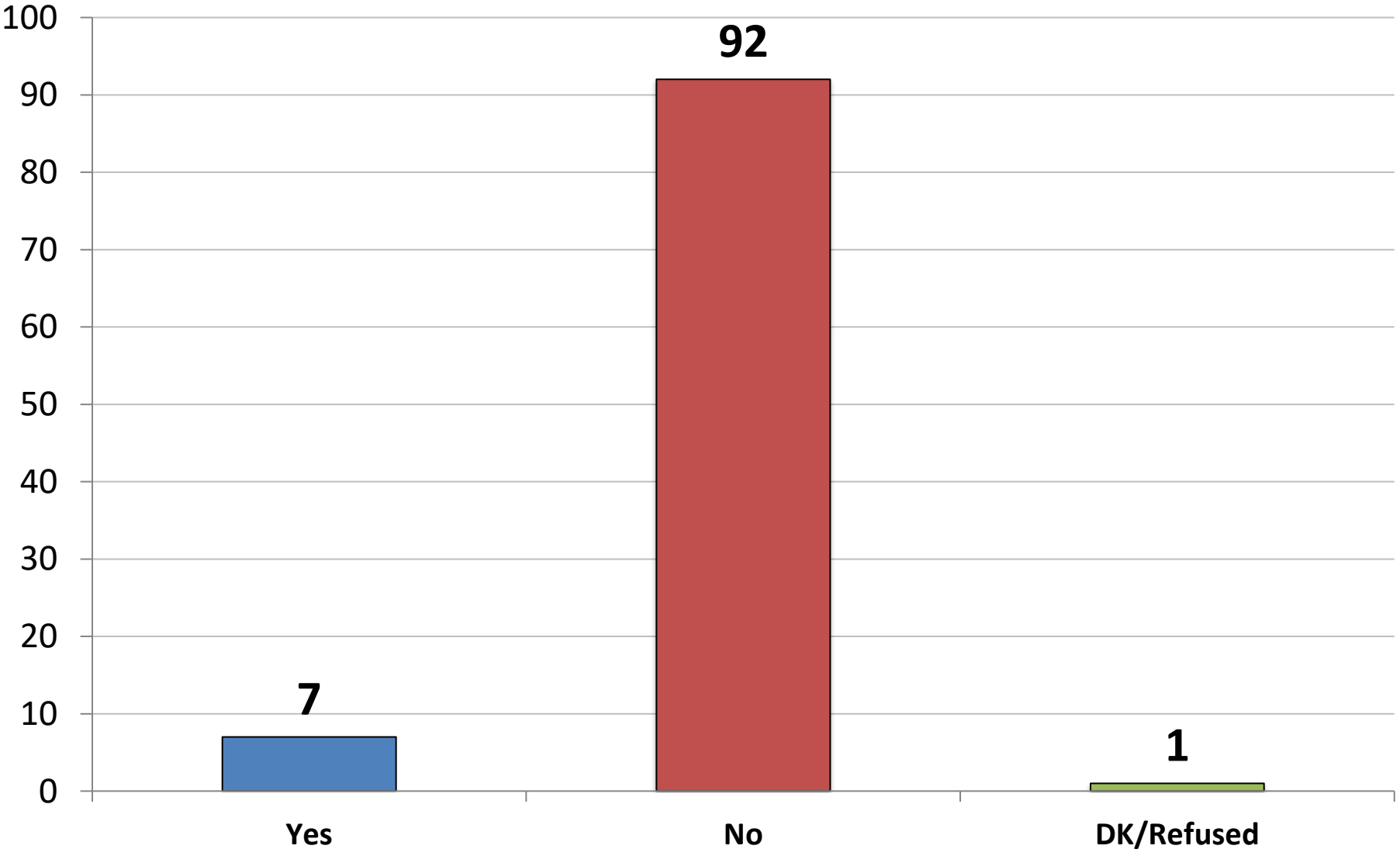


Now, if the 2024 Presidential election were held today, which one of the following best describes how you would vote in the general election for President between Donald Trump, the Republican candidate and Joe Biden, the Democrat candidate, for whom would you vote?



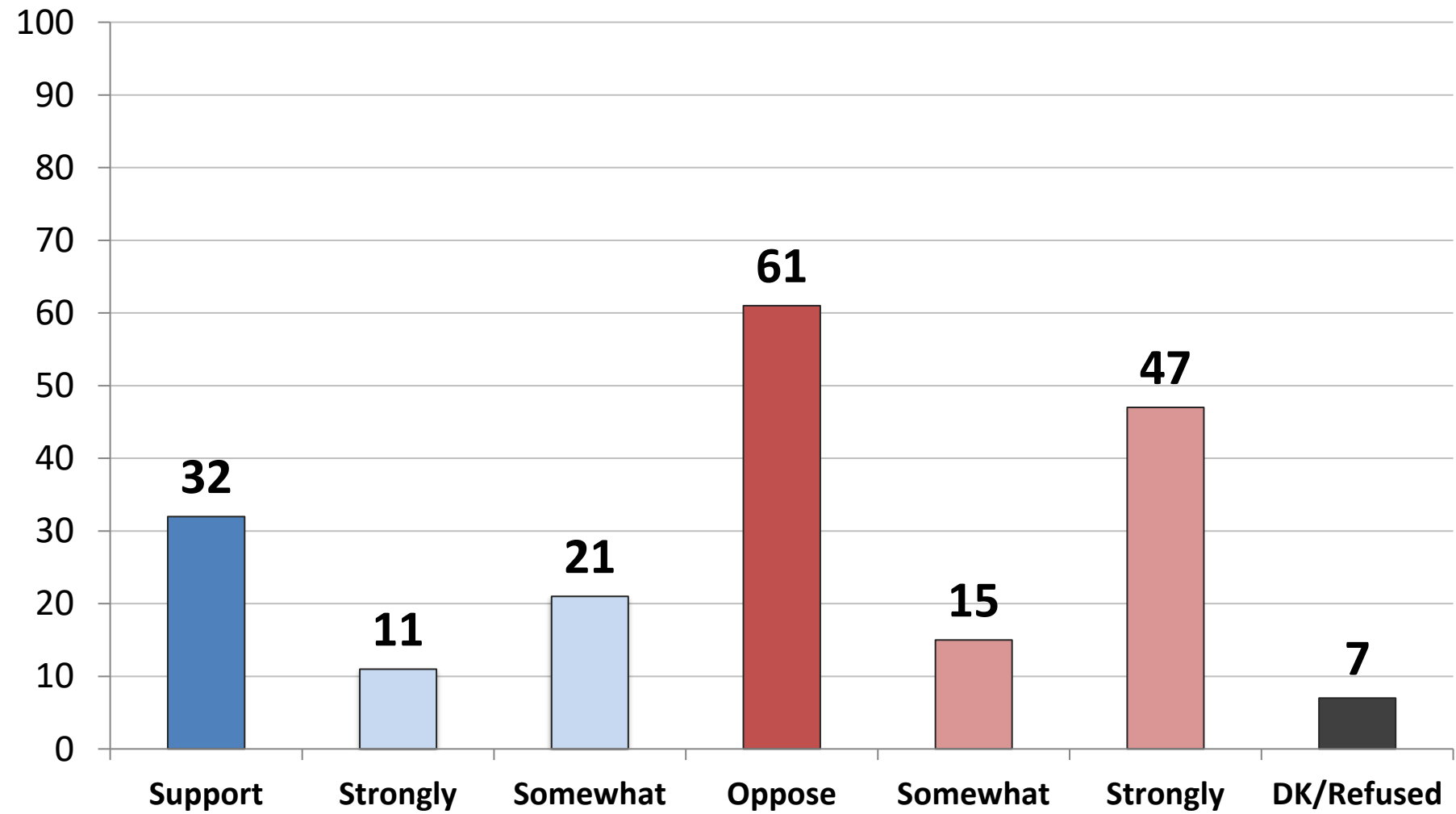
	Trump	Biden	Und.
East	45	45	10
Midwest	53	34	13
South	50	40	10
West	37	54	9
Vote Trump 2024	100	0	0
Vote Biden 2024	0	100	0
Vote Und. 2024	0	0	100
Generic: GOP	89	4	7
Generic: DEM	6	88	7
Generic: UND.	28	37	35
Approve Biden	10	85	5
Disapprove Biden	77	10	13
Republican	90	4	6
Democrat	10	82	8
Independent	39	42	19
Liberal	17	78	5
Moderate	37	47	17
Conservative	84	8	8
White	57	34	9
African- American	11	78	11
Hispanic	44	45	11
Under 55	51	37	12
Over 55	41	51	8
Married	53	39	8
Single	44	44	13
Men	48	44	8
Women	46	42	12
Live in Urban Area	41	52	7
Live in Suburban Area	42	45	14
Live in Rural Area	64	30	6

Do you own an electric powered vehicle?



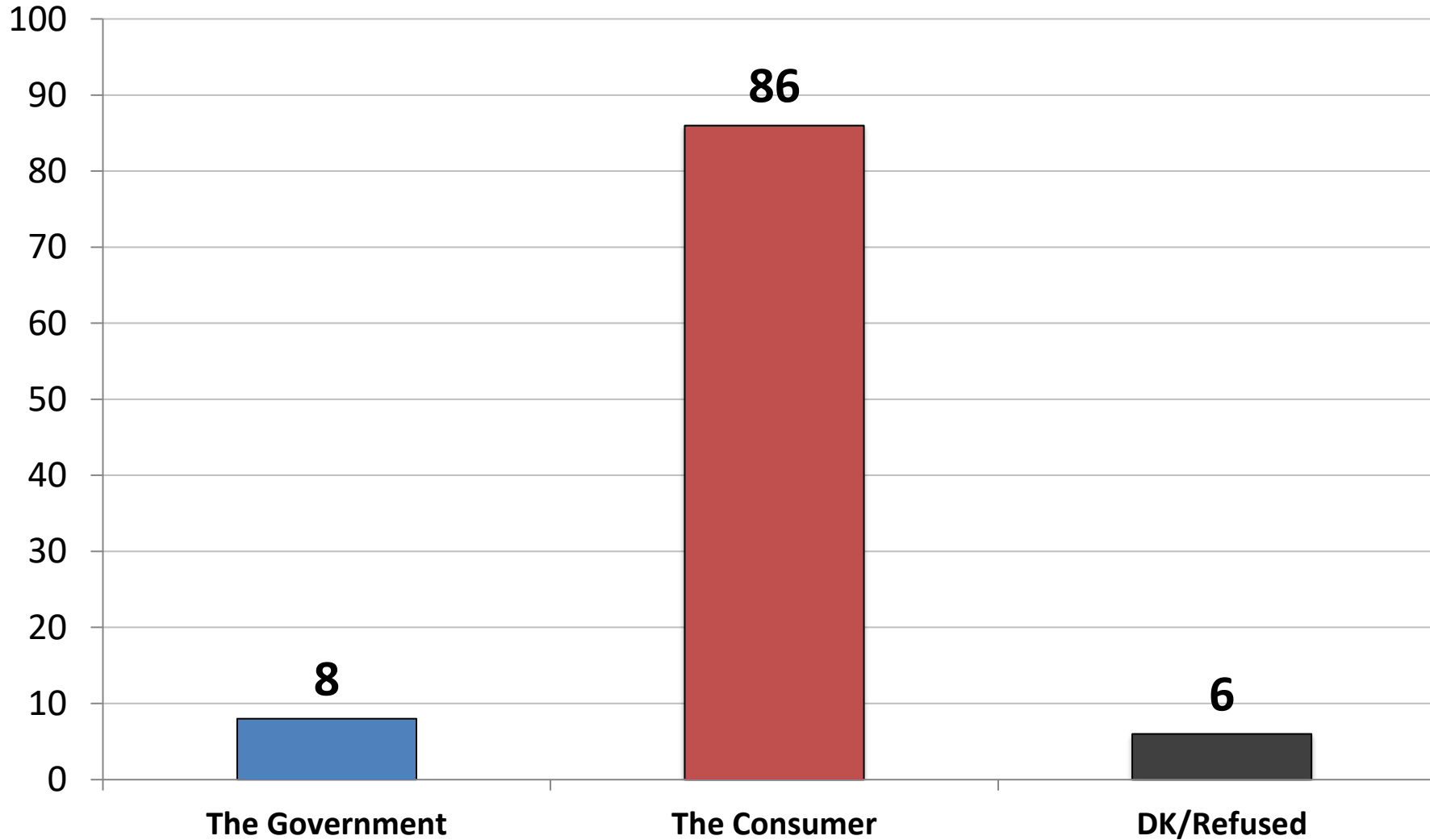
	Yes	No
East	7	92
Midwest	2	97
South	7	92
West	14	86
Vote Trump 2024	7	92
Vote Biden 2024	9	91
Vote Und. 2024	3	94
Generic: GOP	6	93
Generic: DEM	10	89
Generic: UND.	2	97
Approve Biden	12	87
Disapprove Biden	4	95
Republican	5	94
Democrat	12	88
Independent	5	94
Liberal	14	86
Moderate	6	93
Conservative	3	96
White	3	96
African- American	5	94
Hispanic	24	74
Under 55	11	88
Over 55	3	98
Married	10	90
Single	7	91
Men	6	93
Women	8	91
Live in Urban Area	13	87
Live in Suburban Area	6	93
Live in Rural Area	4	95

Do you support or oppose the Biden Administration regulations to eliminate gas powered cars, trucks or SUVs and force consumers to buy electric vehicles by 2032?



	Support	Oppose
East	31	62
Midwest	25	69
South	30	62
West	44	52
Vote Trump 2024	11	85
Vote Biden 2024	58	36
Vote Und. 2024	18	58
Generic: GOP	11	85
Generic: DEM	59	35
Generic: UND.	19	64
Approve Biden	62	31
Disapprove Biden	10	86
Republican	10	85
Democrat	56	37
Independent	30	63
Liberal	64	33
Moderate	28	62
Conservative	9	86
White	28	67
African- American	39	48
Hispanic	39	54
Under 55	33	59
Over 55	31	65
Married	31	66
Single	34	57
Men	37	60
Women	28	63
Live in Urban Area	45	50
Live in Suburban Area	31	63
Live in Rural Area	23	70

Who should make the decision to buy a gas-powered car, truck or SUV or an electric vehicle?



	Gov't	Consumer
East	9	83
Midwest	7	89
South	5	91
West	15	79
Vote Trump 2024	6	92
Vote Biden 2024	13	80
Vote Und. 2024	0	84
Generic: GOP	5	92
Generic: DEM	13	80
Generic: UND.	4	84
Approve Biden	15	77
Disapprove Biden	3	94
Republican	5	92
Democrat	12	81
Independent	8	85
Liberal	18	76
Moderate	7	86
Conservative	2	95
White	7	88
African- American	7	85
Hispanic	14	79
Under 55	10	84
Over 55	7	89
Married	8	88
Single	10	83
Men	8	87
Women	8	85
Live in Urban Area	11	83
Live in Suburban Area	7	88
Live in Rural Area	8	85

From the following list, what social networks do you use?

	<u>Total</u>	<u>Rep.</u>	<u>Dem.</u>	<u>Ind.</u>	<u>White</u>	<u>A.A/Black</u>	<u>Hisp.</u>	<u>Under 55</u>	<u>Over 55</u>	<u>Men</u>	<u>Women</u>
Facebook	76%	79%	73%	76%	78%	77%	67%	77%	74%	70%	80%
YouTube	64%	60%	62%	71%	62%	73%	65%	71%	55%	64%	64%
Instagram	46%	41%	50%	47%	42%	51%	58%	59%	28%	35%	55%
TikTok	27%	26%	26%	31%	24%	40%	33%	41%	10%	17%	36%
Twitter	26%	24%	28%	26%	24%	35%	27%	33%	17%	29%	24%
Pinterest	26%	28%	22%	28%	26%	26%	27%	31%	19%	14%	37%
Linked-In	24%	18%	27%	27%	24%	28%	16%	23%	26%	25%	23%
Snapchat	22%	24%	17%	27%	22%	25%	23%	35%	5%	15%	29%
Reddit	15%	12%	15%	18%	14%	16%	16%	20%	8%	16%	14%
WhatsApp	14%	11%	17%	13%	11%	17%	22%	16%	11%	14%	13%
Tumblr	5%	4%	8%	4%	3%	5%	17%	8%	2%	5%	6%
Telegram	4%	5%	4%	4%	4%	6%	4%	5%	3%	5%	4%
Rumble	3%	5%	0%	4%	4%	3%	2%	4%	2%	3%	3%
Truth Social	3%	6%	1%	2%	3%	1%	2%	3%	2%	3%	3%
Parler	1%	2%	0%	0%	1%	0%	2%	1%	1%	1%	1%
Gettr	1%	1%	0%	1%	1%	0%	2%	1%	0%	1%	0%
Gab.com	1%	1%	0%	1%	0%	1%	2%	1%	0%	1%	0%
Clouthub	0%	1%	0%	0%	0%	0%	0%	0%	0%	0%	0%
Other	1%	2%	2%	0%	1%	3%	2%	1%	2%	1%	2%
None	5%	6%	6%	3%	6%	3%	3%	2%	9%	7%	4%

Voter Profile: n=1,000

	Total		Total		Total
Party:	%	Age:	%	Area:	%
Republican	36	18-29	16	Urban	25
Democrat	36	30-40	17	Suburban	51
Ind./Other/D.K./Ref.	28	41-55	25	Rural	24
Ideology:	%	56-65	20	Region:	%
Liberal	29	Over 65	22	New England	5
Moderate	37	Mean (years)	49.4	Middle Atlantic	13
Conservative	34	Race:	%	East North Central	15
Gender:	%	White	68	West North Central	7
Male	47	African American/Black	13	South Atlantic	21
Female	53	Hispanic	13	East South Central	6
Education:	%	Asian	4	West South Central	10
Less than College	60	Vote Behavior:	%	Mountain	8
College grad.	40	Democrat	45	Pacific	15
		Ticket Splitter	13		
		Republican	42		

Voter Profile: n=1,000

	Total
Religion:	%
Protestant	39
Catholic	21
Atheist/Agnostic	12
Jewish	2
Buddhist	1
Muslim	1
Born Again/Evangelical: n=601	%
Yes	45
No	55
Abortion:	%
Pro-Life	43
Pro-Choice	57



McLaughlin & Associates

New York Office

566 South Route 303

Blauvelt, NY 10913

845-365-2000

D.C./Virginia Office

1012 Cameron Street

Alexandria, VA 22314

703-518-4445

www.mclaughlinonline.com