

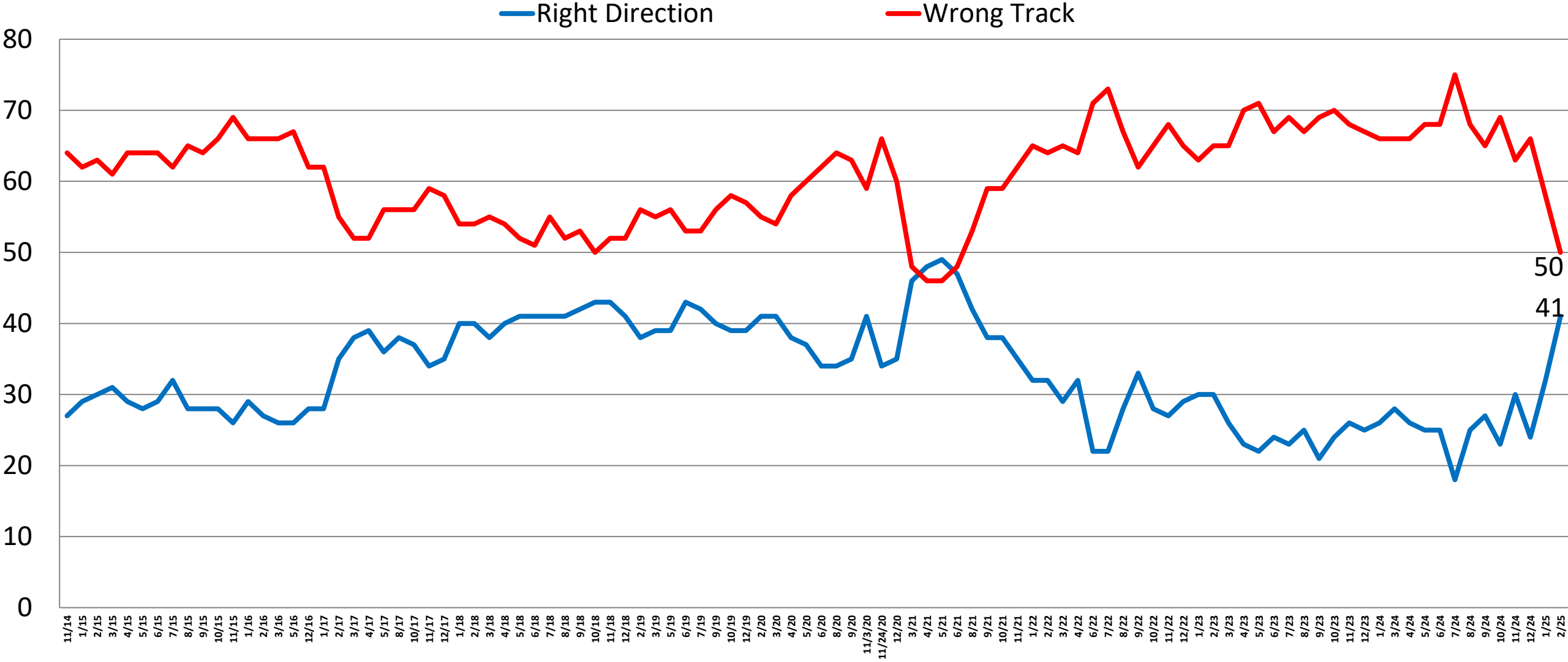
National Survey Results
1,000 General Election Voters
Political Environment, Trends & Analysis

 **McLaughlin & Associates**

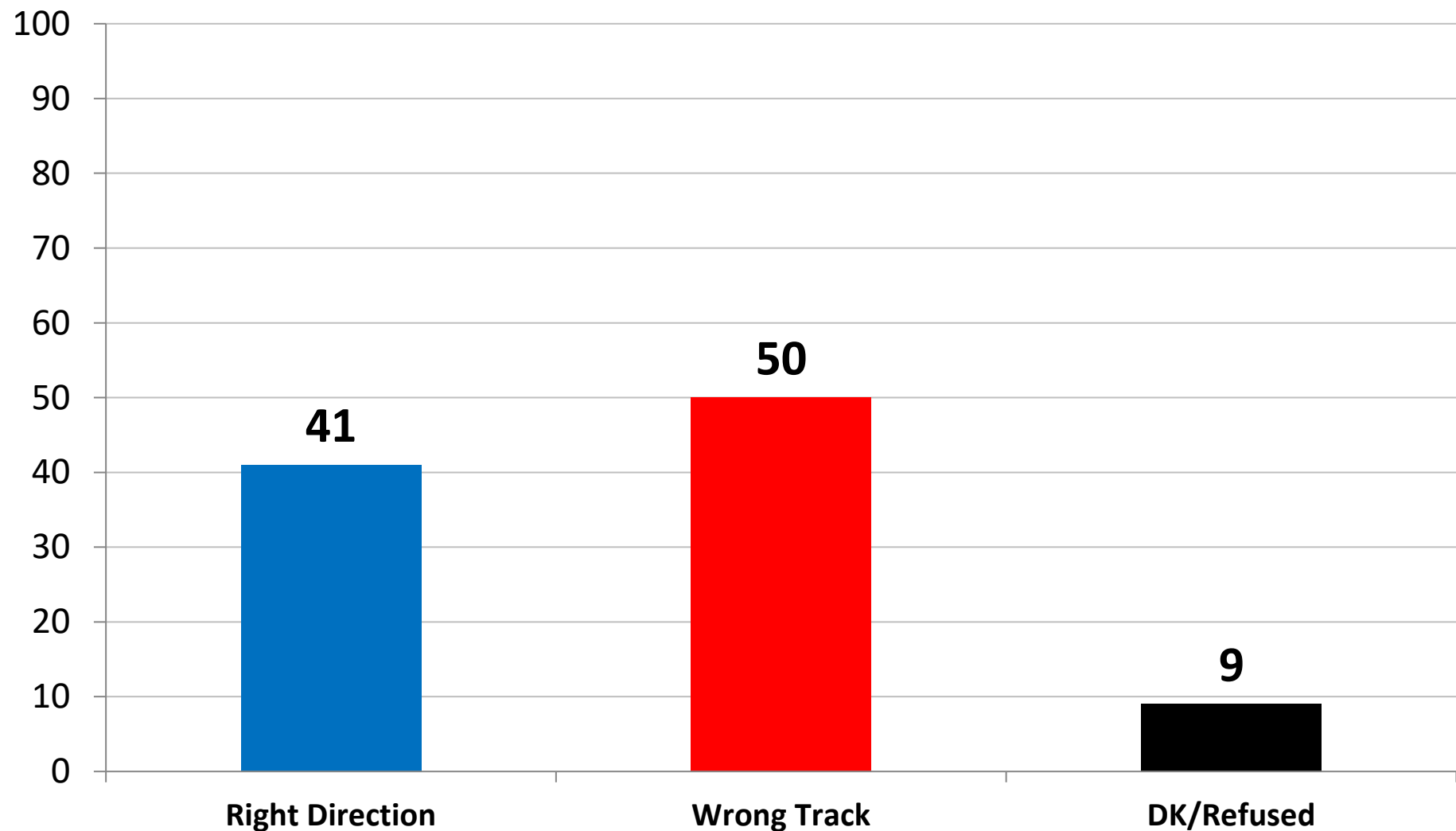
Field Dates: February 11th – 18th, 2025

www.mclaughlinonline.com

Direction: *United States* (Time Series)

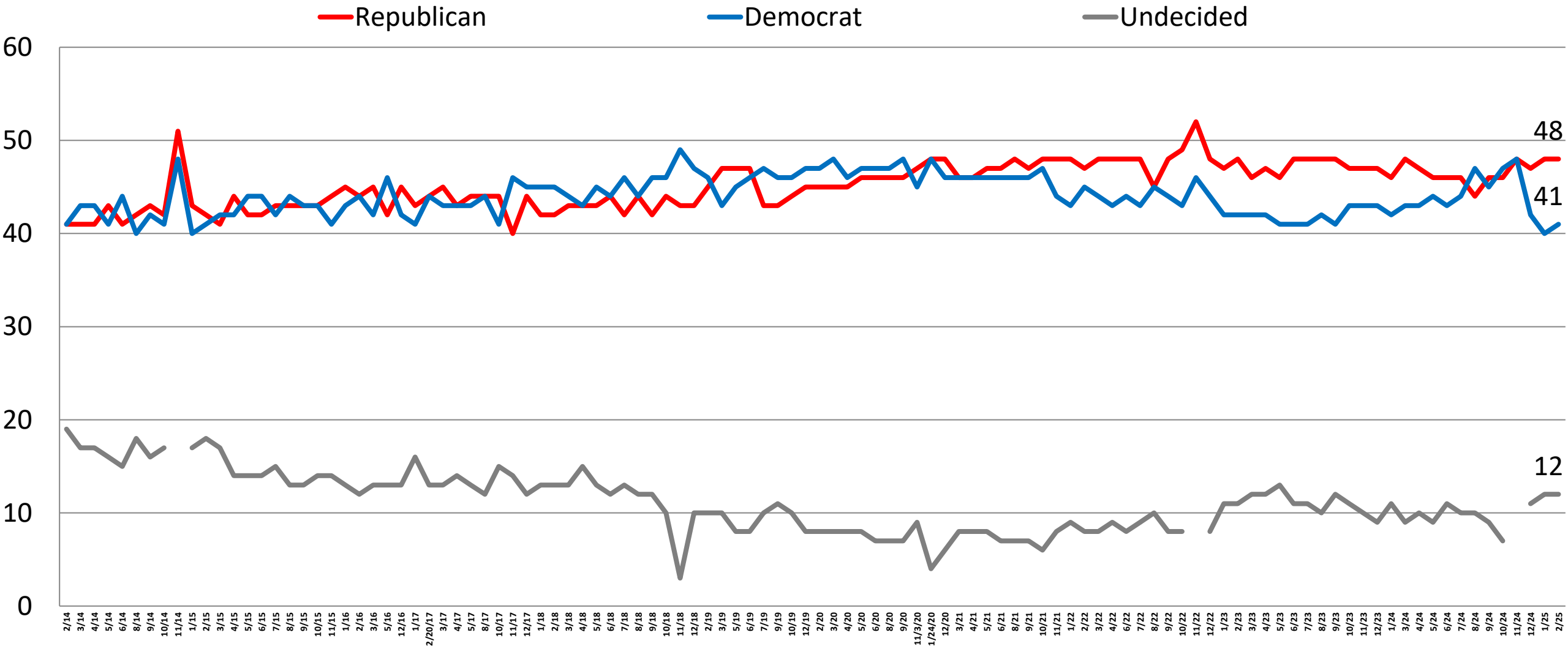


Direction: *United States*



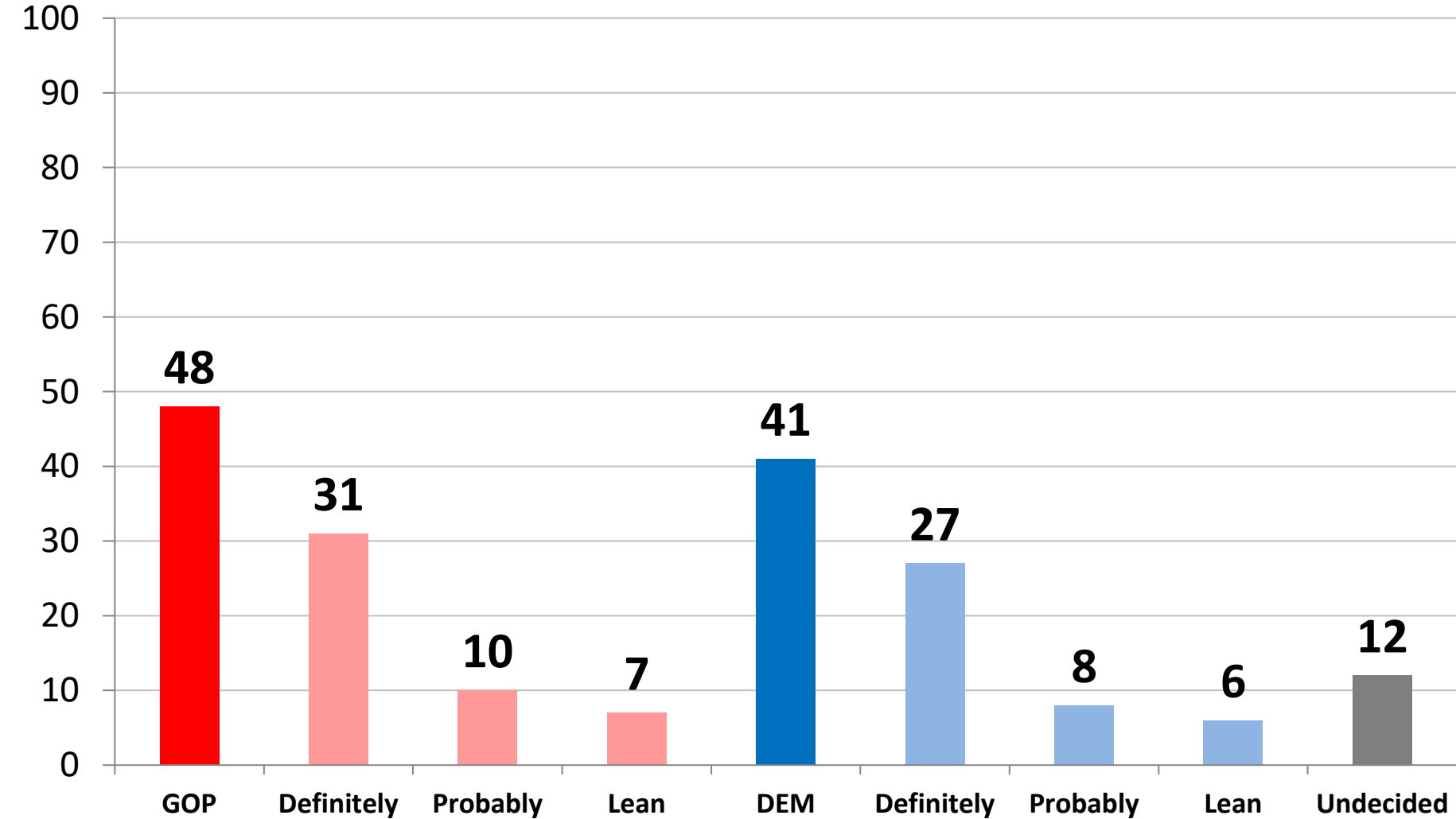
	Right	Wrong
East	42	51
Midwest	38	49
South	45	47
West	36	55
Gen. Cong. – Vote GOP	72	20
Gen. Cong. – Vote DEM	11	82
Gen. Cong. – Vote UND	16	59
Approve Trump Job	74	18
Disapprove Trump Job	6	87
Republican	71	23
Democrat	16	75
Independent	32	56
Liberal	16	77
Moderate	31	56
Conservative	68	25
Vote Trump 2024	74	19
Vote Harris 2024	12	79
White	41	51
African-American	30	54
Hispanic	45	47
Under 55	42	46
Over 55	39	55
Married	44	47
Single	35	55
Men	46	47
Women	36	53
Live in Urban Area	36	53
Live in Suburban Area	41	51
Live in Rural Area	47	45

Generic Ballot: *U.S. Congress* (Time Series)



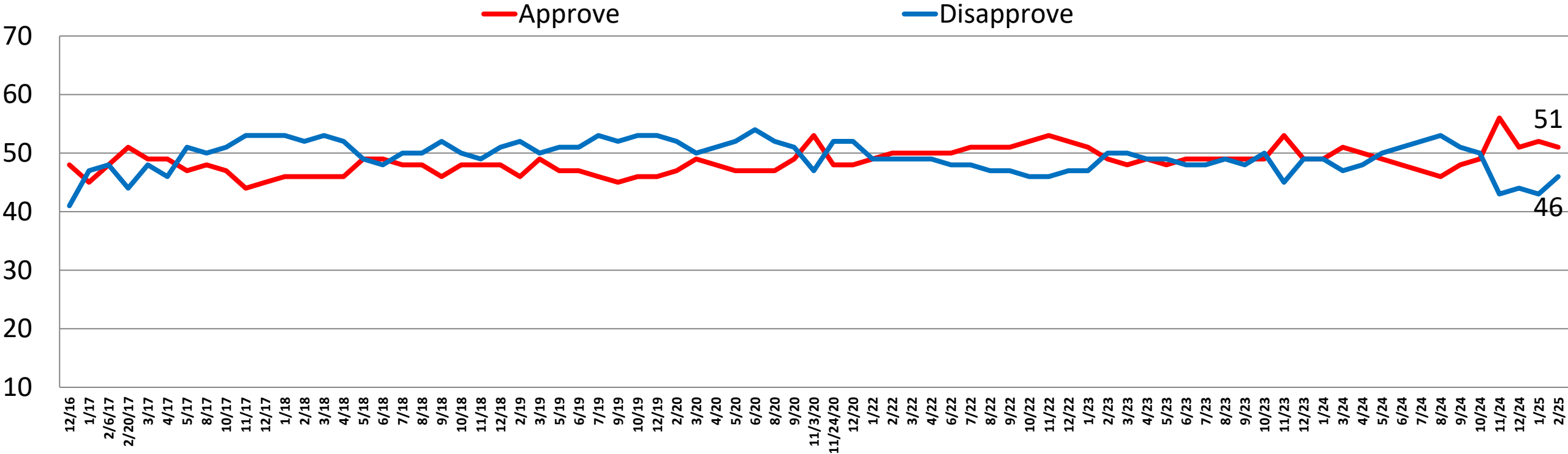
Generic Ballot: *U.S. Congress*

	GOP	DEM	UND
East	43	47	10
Midwest	51	39	11
South	50	40	10
West	45	39	16
Gen. Cong. – Vote GOP	100	0	0
Gen. Cong. – Vote DEM	0	100	0
Gen. Cong. – Vote UND	0	0	100
Approve Trump Job	85	8	7
Disapprove Trump Job	8	77	14
Republican	94	3	3
Democrat	8	88	4
Independent	35	36	30
Liberal	14	80	6
Moderate	32	48	20
Conservative	86	8	6
Vote Trump 2024	91	3	6
Vote Harris 2024	7	82	11
White	53	37	10
African-American	20	65	15
Hispanic	39	47	13
Under 55	46	41	14
Over 55	50	41	9
Married	55	35	10
Single	36	52	13
Men	53	38	9
Women	43	44	14
Live in Urban Area	36	54	10
Live in Suburban Area	46	40	13
Live in Rural Area	63	27	10

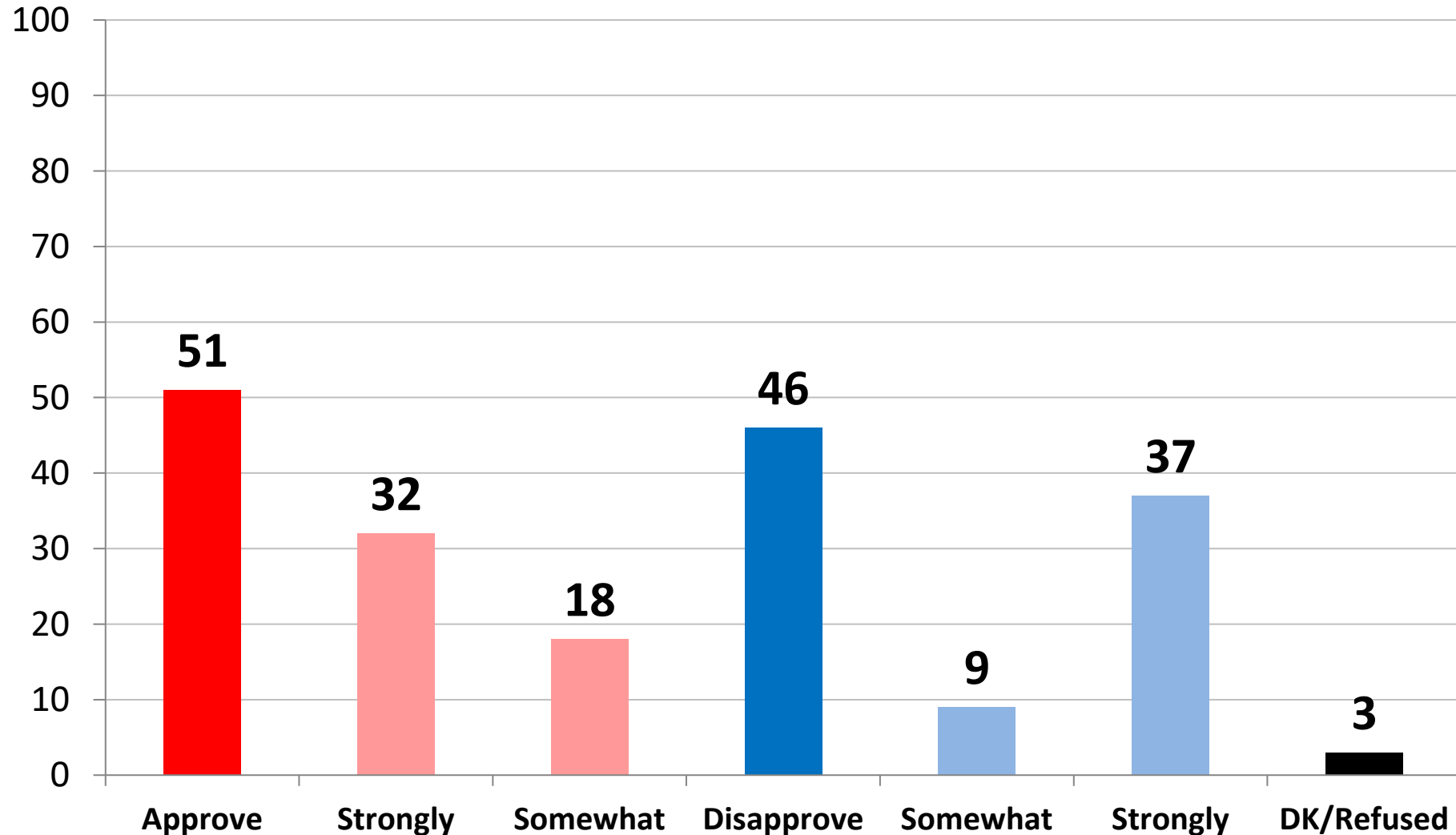


Job Rating: *Donald Trump* (Time Series)

	12/16	1/17	2/6/17	2/20/17	3/17	4/17	5/17	8/17	10/17	11/17	12/17	1/18	2/18	3/18	4/18	5/18	6/18	7/18	8/18	9/18	10/18	11/18	12/18	2/19	3/19	5/19	
Approve	48	45	48	51	49	49	47	48	47	44	45	46	46	46	46	49	49	48	48	46	48	48	48	46	49	47	
Disapprove	41	47	48	44	48	46	51	50	51	53	53	53	52	53	52	49	48	50	50	52	50	49	51	52	50	51	
Net Diff.	+7	-2	0	+7	+1	+3	-4	-2	-4	-9	-8	-7	-6	-7	-6	0	+1	-2	-2	-6	-2	-1	-3	-6	-1	-4	
	6/19	7/19	9/19	10/19	12/19	2/20	3/20	4/20	6/20	8/20	9/20	11/3/20	11/24/20	12/20	1/22	2/22	3/22	4/22	6/22	7/22	8/22	9/22	10/22	11/22	12/22	1/23	
Approve	47	46	45	46	46	47	49	48	47	47	49	53	48	48	49	50	50	50	50	51	51	51	51	52	53	52	51
Disapprove	51	53	52	53	53	52	50	51	54	52	51	47	52	52	49	49	49	49	48	48	47	47	46	46	47	47	
Net Diff.	-4	-7	-7	-7	-7	-5	-1	-3	-7	-5	-2	+6	-4	-4	0	+1	+1	+1	+2	+3	+4	+4	+6	+7	+5	+5	
	2/23	3/23	4/23	5/23	6/23	7/23	8/23	9/23	10/23	11/23	12/23	1/24	3/24	4/24	5/24	6/24	7/24	8/24	9/24	10/24	11/24	12/24	1/25	2/25			
Approve	49	48	49	48	49	49	49	49	49	53	49	49	51	50	49	48	47	46	48	49	56	51	52	51			
Disapprove	50	50	49	49	48	48	49	48	50	45	49	49	47	48	50	51	52	53	51	50	43	44	43	46			
Net Diff.	-1	-2	0	-2	+1	+1	0	+1	-1	+8	+1	0	+4	+3	-1	-3	-5	-7	-3	-1	+14	+7	+9	-4			



Job Rating: *Donald Trump*



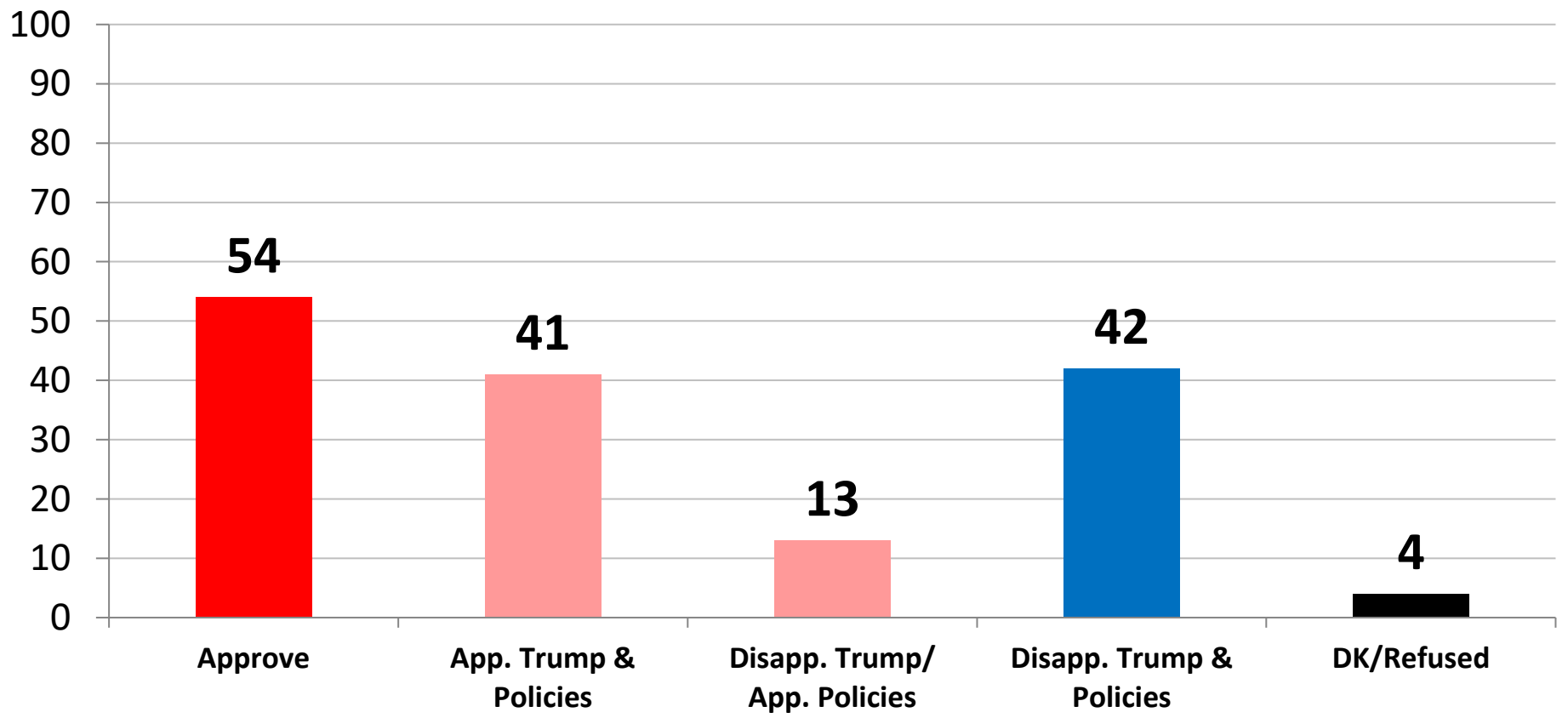
	Approve	Disapprove
East	49	47
Midwest	53	44
South	51	46
West	49	49
Gen. Cong. – Vote GOP	91	8
Gen. Cong. – Vote DEM	9	88
Gen. Cong. – Vote UND	32	58
Approve Trump Job	100	0
Disapprove Trump Job	0	100
Republican	88	11
Democrat	16	81
Independent	42	52
Liberal	19	79
Moderate	39	57
Conservative	85	14
Vote Trump 2024	94	5
Vote Harris 2024	10	86
White	54	44
African-American	29	64
Hispanic	46	47
Under 55	51	45
Over 55	50	48
Married	56	42
Single	42	53
Men	57	41
Women	45	51
Live in Urban Area	43	53
Live in Suburban Area	48	49
Live in Rural Area	63	33

Which of the following statements regarding President Trump and his policies comes closest to your opinion?

- 1) I approve of President Trump and his policies.
- 2) I disapprove of President Trump personally, but I like a lot of his policies.
- 3) I disapprove of President Trump and his policies.

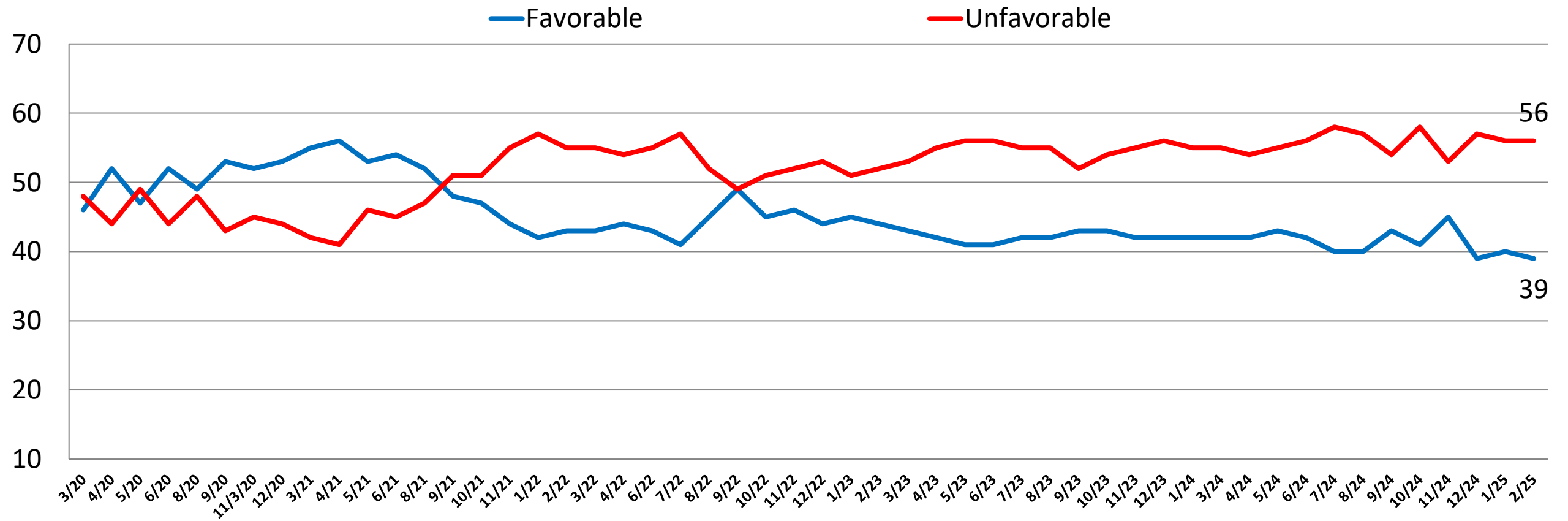
	9/23	10/23	11/23	12/23	1/24	3/24	4/24	5/24	6/24	7/24	8/24	9/24	10/24	1/25	2/25
Approve	55	56	58	52	56	58	55	55	53	52	52	52	54	57	54
Both Trump & Policies	33	31	32	31	34	35	34	33	31	33	33	33	34	42	41
Just Policies	22	25	25	21	23	24	21	23	22	19	20	19	20	14	13
Disapprove Both	41	40	38	43	39	38	41	41	44	46	44	44	45	38	42

	App. Both	Like Policy	Disapprove
East	36	17	43
Midwest	42	13	41
South	44	12	40
West	40	12	46
Gen. Cong. – Vote GOP	78	16	4
Gen. Cong. – Vote DEM	5	7	84
Gen. Cong. – Vote UND	16	22	46
Approve Trump Job	81	14	3
Disapprove Trump Job	0	11	85
Republican	77	15	5
Democrat	9	9	78
Independent	31	15	47
Liberal	12	7	78
Moderate	27	17	50
Conservative	75	12	10
Vote Trump 2024	82	13	2
Vote Harris 2024	4	11	81
White	45	13	39
African-American	18	15	58
Hispanic	35	14	45
Under 55	40	14	40
Over 55	42	12	44
Married	47	13	36
Single	31	12	51
Men	46	13	37
Women	36	13	46
Live in Urban Area	30	15	50
Live in Suburban Area	40	12	43
Live in Rural Area	55	12	30

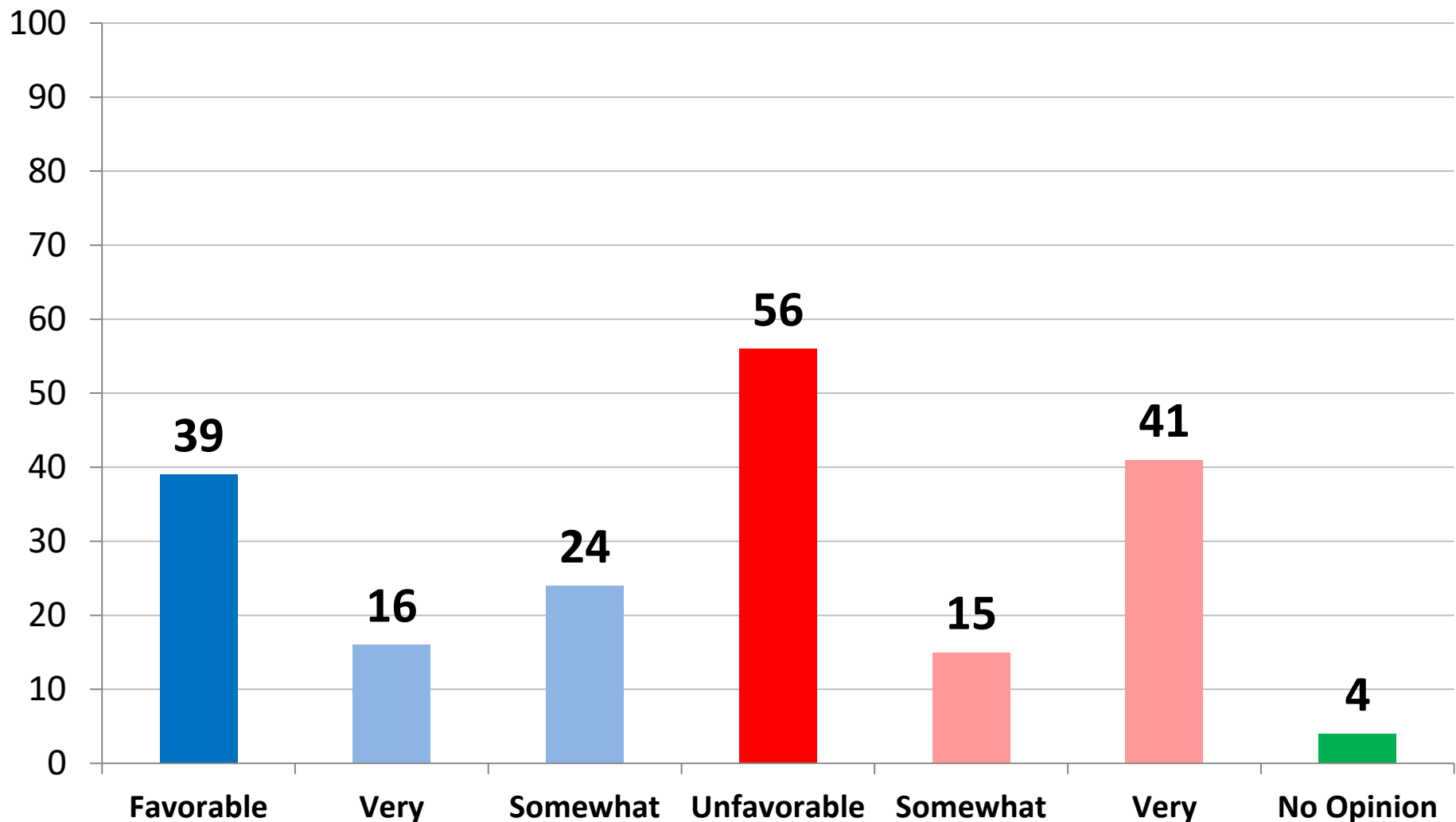


Opinion: *Joe Biden* (Time Series)

	3/20	4/20	5/20	6/20	8/20	9/20	11/3/20	12/20	3/21	4/21	5/21	6/21	8/21	9/21	10/21	11/21	1/22	2/22	3/22	4/22	6/22	7/22	8/22	9/22	10/22	11/22
Favorable	46	52	47	52	49	53	52	53	55	56	53	54	52	48	47	44	42	43	43	44	43	41	45	49	45	46
Unfavorable	48	44	49	44	48	43	45	44	42	41	46	52	47	51	51	55	57	55	55	54	55	57	52	49	51	52
Net Diff.	-2	+8	-2	+8	+1	+10	+7	+9	+13	+15	+7	+2	+5	-3	-4	-11	-15	-12	-12	-10	-12	-16	-7	0	-6	-6
	12/22	1/23	2/23	3/23	4/23	5/23	6/23	7/23	8/23	9/23	10/23	11/23	12/23	1/24	3/24	4/24	5/24	6/24	7/24	8/24	9/24	10/24	11/24	12/24	1/25	2/25
Favorable	44	45	44	43	42	41	41	42	42	43	43	42	42	42	42	42	43	42	40	40	43	41	45	39	40	39
Unfavorable	53	51	52	53	55	56	56	55	55	52	54	55	56	55	55	54	55	56	58	57	54	58	53	57	56	56
Net Diff.	-9	-6	-8	-10	-13	-15	-15	-13	-13	-9	-11	-13	-15	-14	-14	-11	-12	-14	-18	-18	-11	-18	-9	-18	-17	-17



Opinion: *Joe Biden*

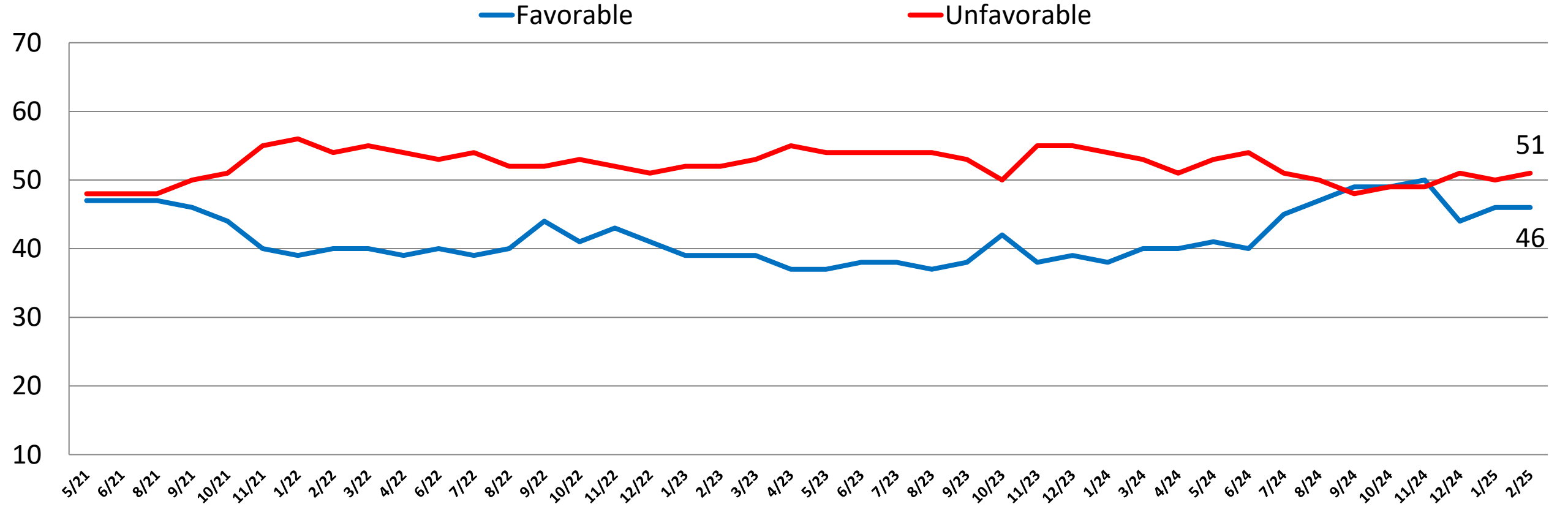


	Favorable	Unfavorable
East	45	51
Midwest	33	65
South	39	56
West	42	53
Gen. Cong. – Vote GOP	10	88
Gen. Cong. – Vote DEM	76	22
Gen. Cong. – Vote UND	31	51
Approve Trump Job	12	84
Disapprove Trump Job	69	27
Republican	11	86
Democrat	77	20
Independent	33	60
Liberal	70	27
Moderate	47	47
Conservative	11	86
Vote Trump 2024	7	90
Vote Harris 2024	76	21
White	34	63
African-American	63	30
Hispanic	48	46
Under 55	40	55
Over 55	39	58
Married	36	61
Single	48	46
Men	40	57
Women	39	55
Live in Urban Area	50	47
Live in Suburban Area	40	55
Live in Rural Area	26	69

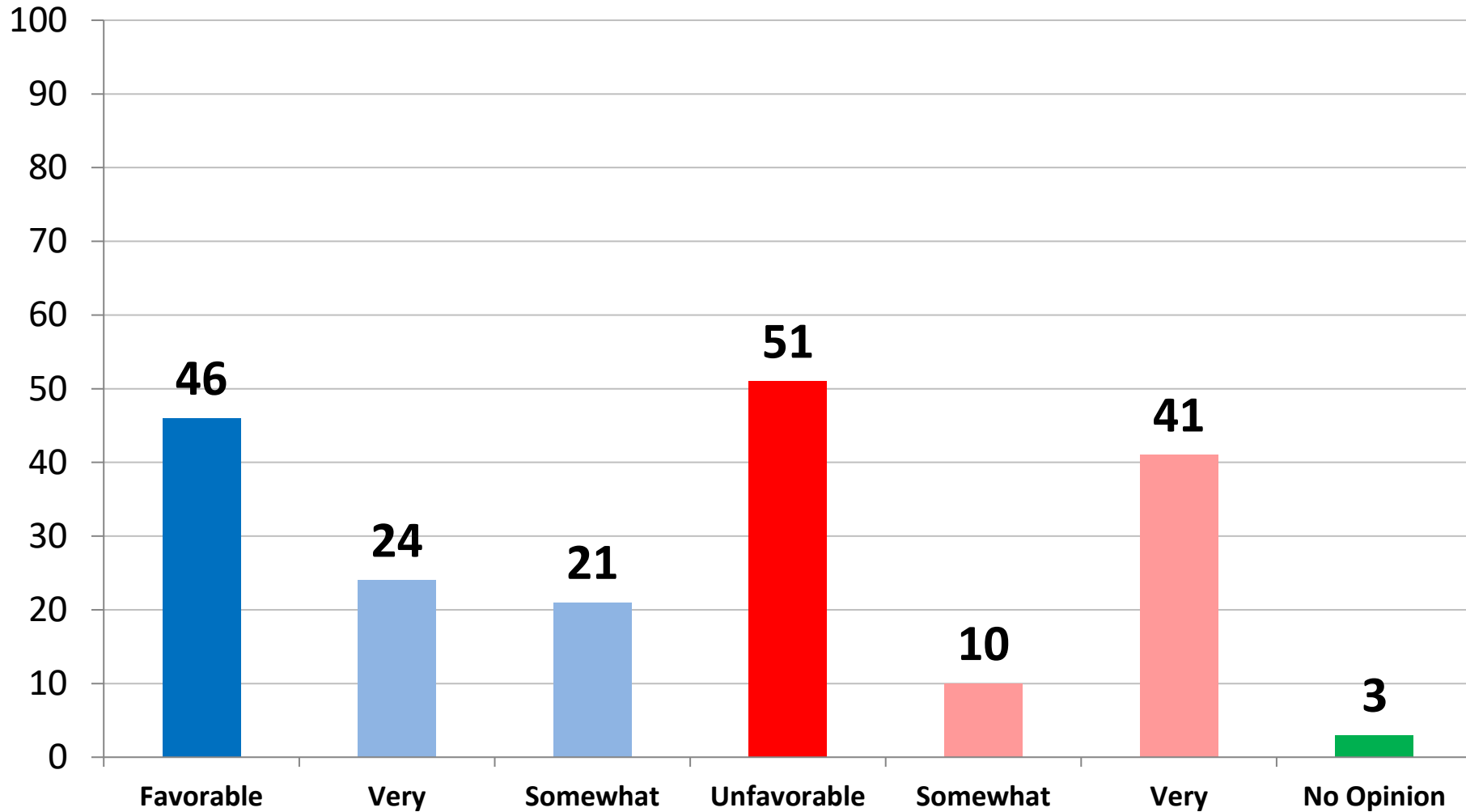
Opinion: Kamala Harris (Time Series)

	5/21	6/21	8/21	9/21	10/21	11/21	1/22	2/22	3/22	4/22	6/22	7/22	8/22	9/22	10/22	11/22	12/22	1/23	2/23	3/23	4/23
Favorable	47	47	47	46	44	40	39	40	40	39	40	39	40	44	41	43	41	39	39	39	37
Unfavorable	48	48	48	50	51	55	56	54	55	54	53	54	52	52	53	52	51	52	52	53	55
Net Diff.	-1	-1	-1	-4	-7	-15	-17	-16	-15	-15	-13	-15	-12	-8	-12	-9	-10	-13	-13	-14	-18

	5/23	6/23	7/23	8/23	9/23	10/23	11/23	12/23	1/24	3/24	4/24	5/24	6/24	7/24	8/24	9/24	10/24	11/24	12/24	1/25	2/25
Favorable	37	38	38	37	38	42	38	39	38	40	40	41	40	45	47	49	49	50	44	46	46
Unfavorable	54	54	54	54	53	50	55	55	54	53	51	53	54	51	50	48	49	49	51	50	51
Net Diff.	-17	-16	-16	-17	-15	-8	-17	-16	-16	-13	-11	-12	-14	-6	-4	+1	0	+1	-7	-4	-5



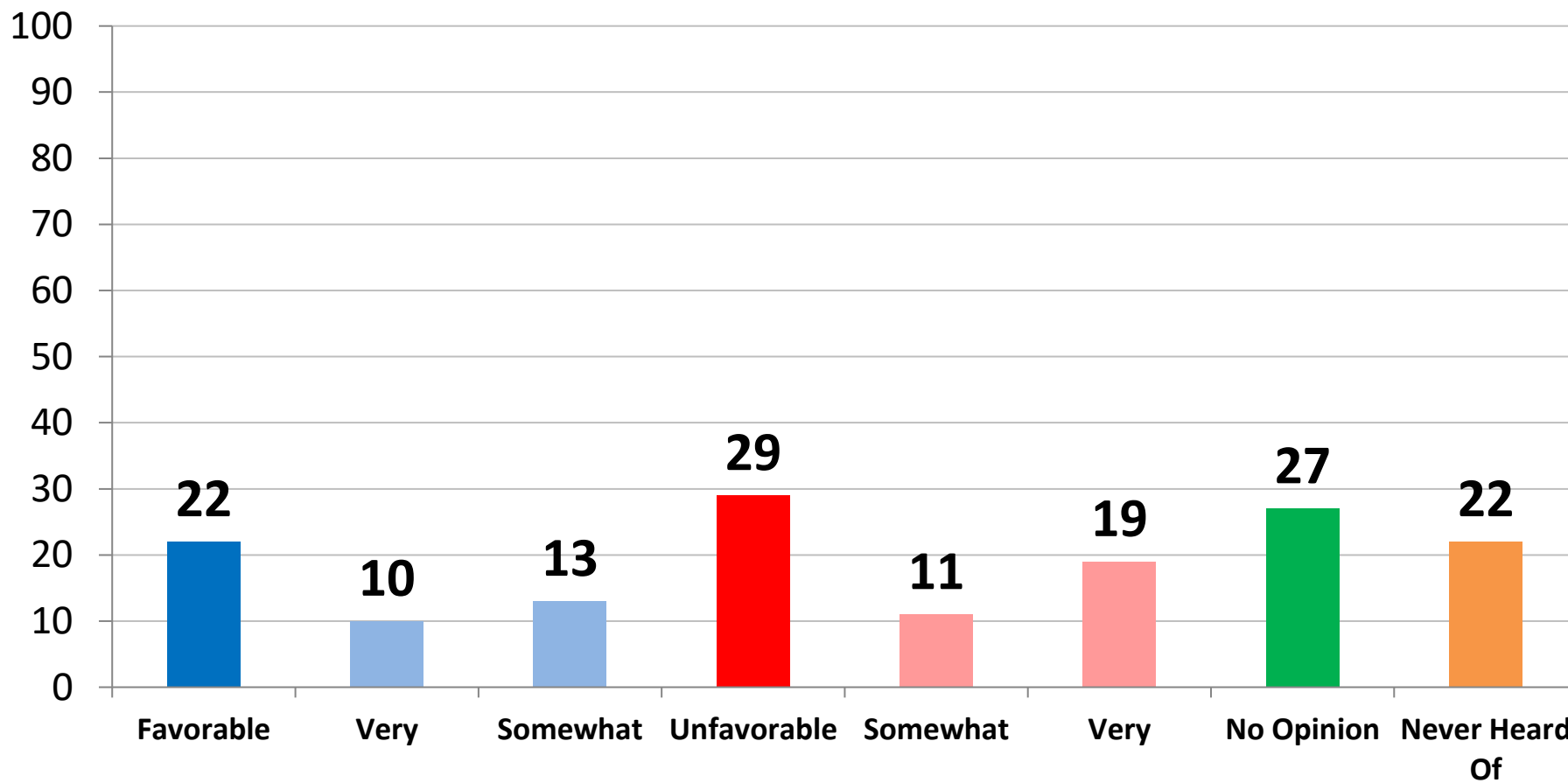
Opinion: *Kamala Harris*



	Favorable	Unfavorable
East	49	46
Midwest	39	59
South	47	49
West	46	50
Gen. Cong. – Vote GOP	11	87
Gen. Cong. – Vote DEM	89	10
Gen. Cong. – Vote UND	35	50
Approve Trump Job	14	84
Disapprove Trump Job	80	17
Republican	12	86
Democrat	87	11
Independent	42	52
Liberal	82	15
Moderate	54	42
Conservative	13	84
Vote Trump 2024	8	89
Vote Harris 2024	87	11
White	39	58
African-American	73	21
Hispanic	58	36
Under 55	48	48
Over 55	43	55
Married	39	59
Single	59	36
Men	41	57
Women	50	46
Live in Urban Area	60	38
Live in Suburban Area	44	51
Live in Rural Area	32	65

Opinion: *Hakeem Jeffries*

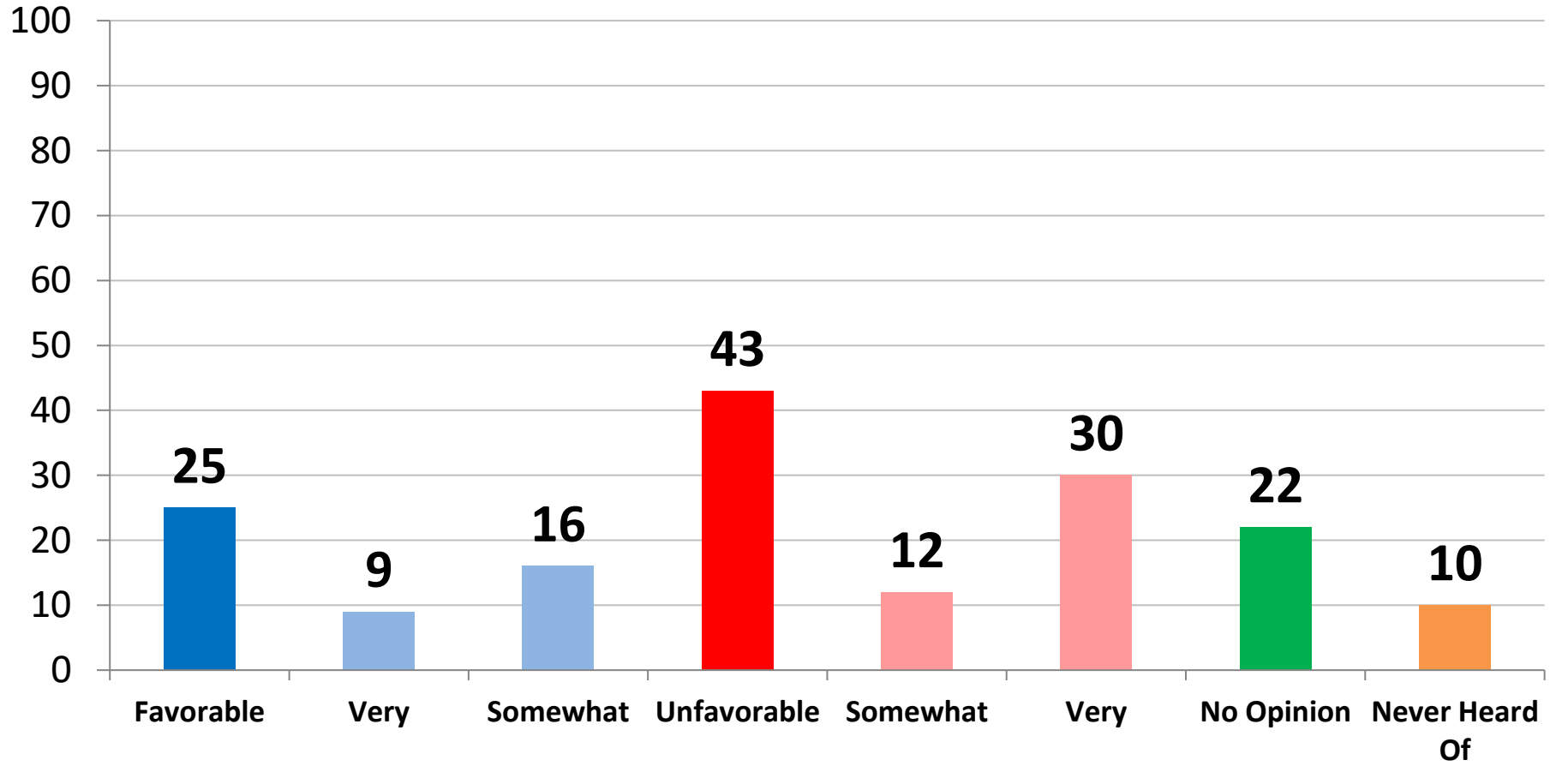
	1/23	2/23	3/23	4/23	5/23	6/23	7/23	8/23	9/23	10/23	11/23	12/23	1/24	3/24	4/24	5/24	6/24	7/24	8/24	9/24	10/24	1/25	2/25
Favorable	26	26	24	23	23	22	23	20	21	23	24	23	22	21	21	22	21	23	24	23	20	23	22
Unfavorable	24	23	25	27	25	28	25	28	31	27	29	33	28	30	32	32	30	27	25	30	29	28	29
Net Diff.	+2	+3	-1	-4	-2	-6	-2	-8	-10	-4	-5	-10	-6	-9	-11	-10	-8	-4	-1	-6	-9	-5	-7



	Favorable	Unfavorable
East	25	29
Midwest	16	25
South	24	32
West	23	29
Gen. Cong. – Vote GOP	11	44
Gen. Cong. – Vote DEM	39	14
Gen. Cong. – Vote UND	10	23
Approve Trump Job	11	42
Disapprove Trump Job	35	17
Republican	10	42
Democrat	40	15
Independent	18	29
Liberal	42	16
Moderate	24	22
Conservative	8	45
Vote Trump 2024	10	43
Vote Harris 2024	37	17
White	20	32
African-American	33	18
Hispanic	28	25
Under 55	20	25
Over 55	26	35
Married	23	31
Single	24	26
Men	27	35
Women	18	24
Live in Urban Area	28	25
Live in Suburban Area	23	30
Live in Rural Area	16	33

Opinion: Chuck Schumer

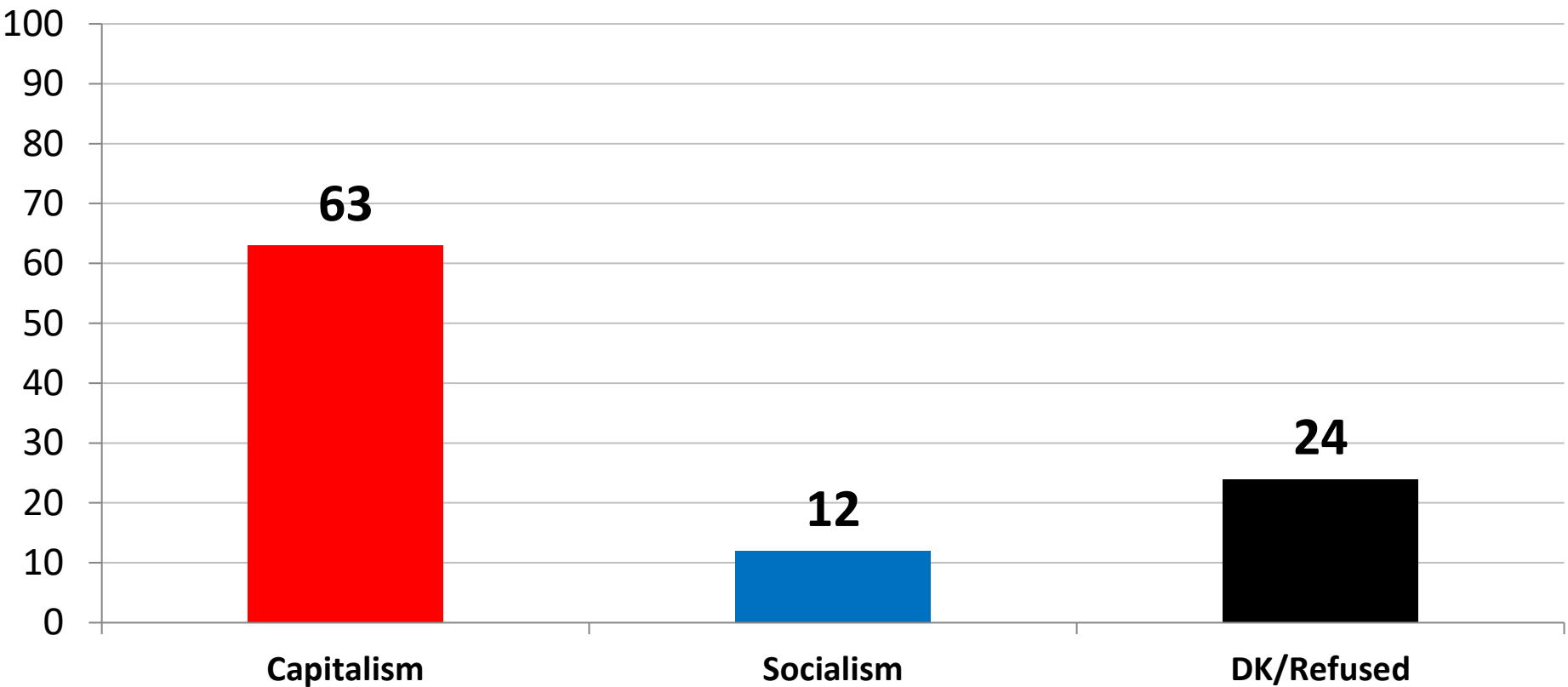
	3/21	4/21	5/21	6/21	8/21	9/21	10/21	11/21	1/25	2/25
Favorable	28	34	32	33	31	32	33	31	25	25
Unfavorable	47	47	48	43	46	49	47	49	39	43
Net Diff.	-19	-13	-17	-10	-16	-17	-14	-18	-15	-17



	Favorable	Unfavorable
East	33	39
Midwest	21	45
South	24	45
West	25	41
Gen. Cong. – Vote GOP	11	64
Gen. Cong. – Vote DEM	46	21
Gen. Cong. – Vote UND	10	34
Approve Trump Job	12	62
Disapprove Trump Job	41	24
Republican	11	61
Democrat	47	21
Independent	19	44
Liberal	46	23
Moderate	28	34
Conservative	9	65
Vote Trump 2024	10	64
Vote Harris 2024	43	23
White	24	47
African-American	30	24
Hispanic	30	38
Under 55	20	39
Over 55	32	47
Married	25	48
Single	28	35
Men	31	50
Women	20	36
Live in Urban Area	32	36
Live in Suburban Area	26	42
Live in Rural Area	17	53

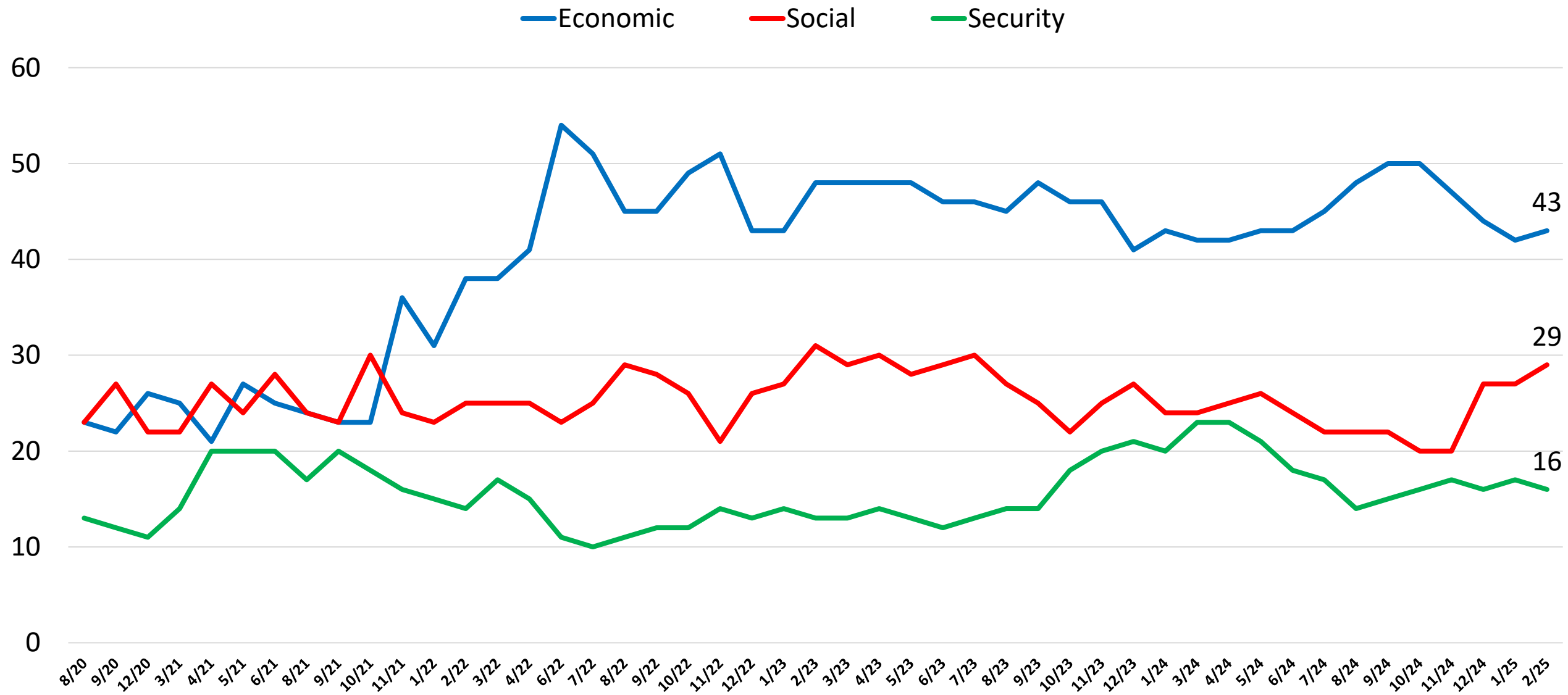
All things being equal, do you prefer: Free Market Capitalism OR, Big Government Socialism

	10/19	12/19	2/20	3/20	4/20	5/20	6/20	8/20	9/20	11/20	12/20	3/21	4/21	5/21	6/21	8/21	10/21	11/21	1/22	2/22
Capitalism	63	60	61	62	59	61	62	59	60	76	58	60	63	64	63	59	61	62	61	62
Socialism	14	16	12	13	17	16	15	17	18	24	16	18	19	15	17	16	18	16	15	15
	3/22	4/22	6/22	7/22	8/22	9/22	10/22	11/22	12/22	1/23	2/23	3/23	4/23	5/23	6/23	7/23	8/23	12/24	1/25	2/25
Capitalism	62	61	62	60	59	67	62	64	61	62	61	61	62	63	60	60	62	63	64	63
Socialism	16	14	16	15	16	17	14	11	13	15	14	14	12	11	13	12	15	12	12	12



	Capitalism	Socialism
East	67	10
Midwest	68	10
South	62	12
West	59	18
Gen. Cong. – Vote GOP	81	5
Gen. Cong. – Vote DEM	46	22
Gen. Cong. – Vote UND	52	11
Approve Trump Job	80	5
Disapprove Trump Job	47	21
Republican	78	4
Democrat	46	23
Independent	64	11
Liberal	47	30
Moderate	58	10
Conservative	80	4
Vote Trump 2024	80	5
Vote Harris 2024	48	20
White	67	9
African-American	49	17
Hispanic	61	20
Under 55	56	16
Over 55	73	7
Married	68	11
Single	53	17
Men	74	13
Women	53	12
Live in Urban Area	57	19
Live in Suburban Area	64	12
Live in Rural Area	69	6

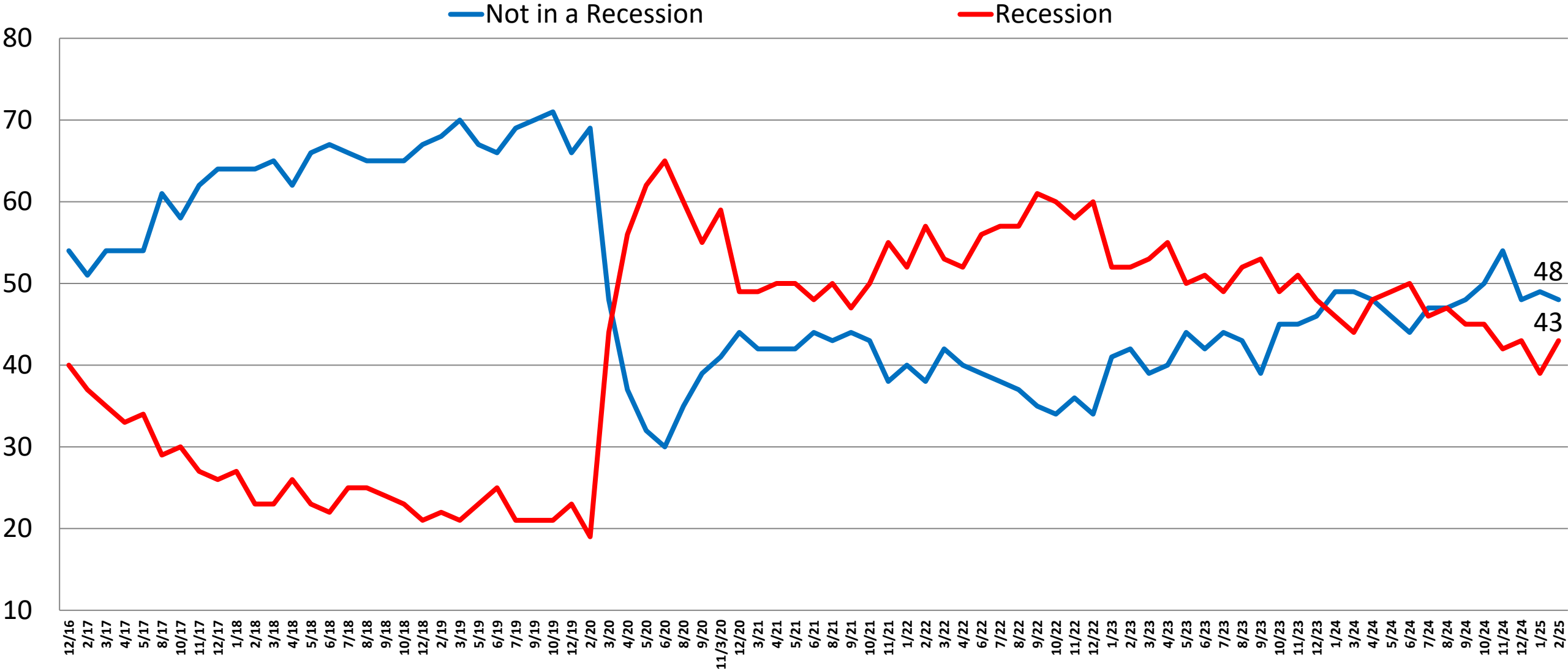
Most Important Issue (Time Series)



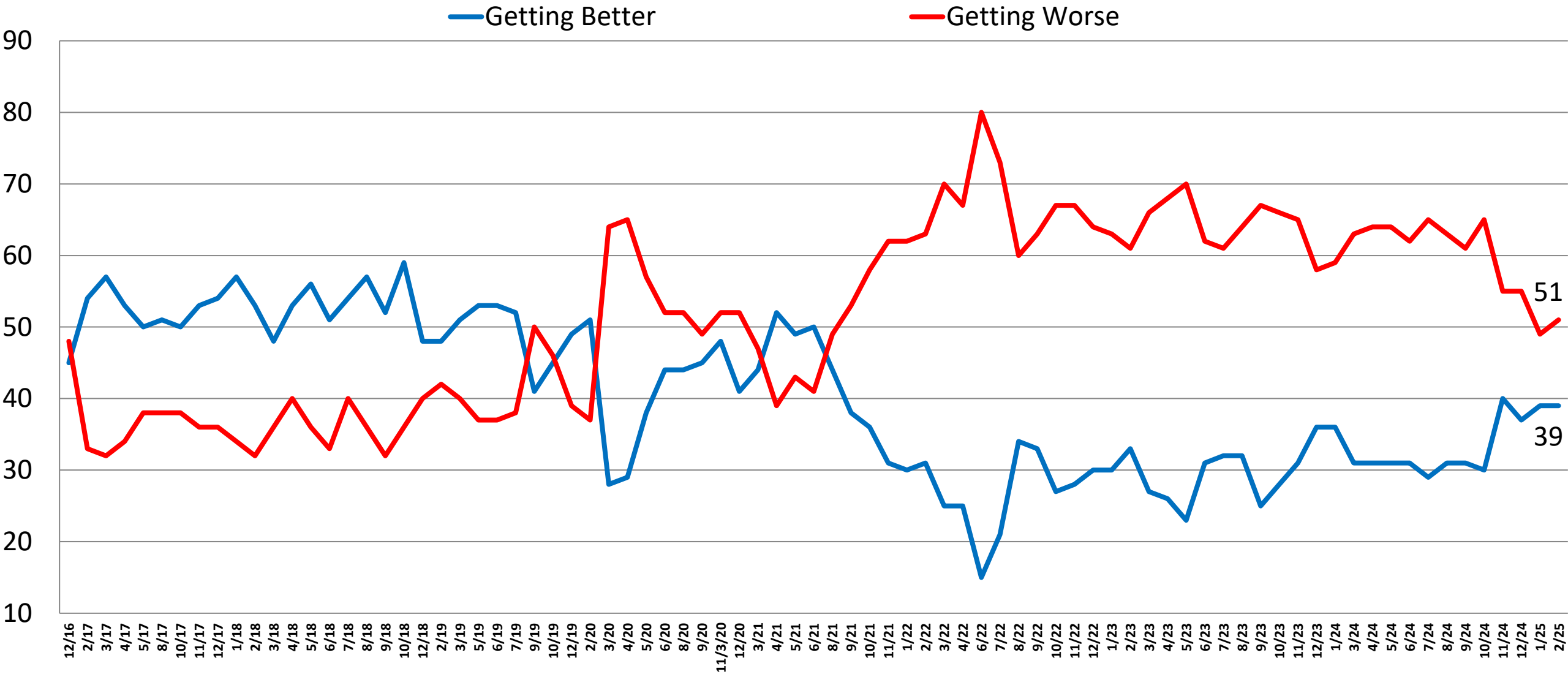
Most Important Issue

	12/23	1/24	3/24	4/24	5/24	6/24	7/24	8/24	9/24	10/24	11/24	12/24	1/25	2/25	Vote DJT	Vote KH	Rep	Dem	Ind	White	Black	Hisp.	Und. 55	Over 55	Men	Women
Economic	41	43	42	42	43	43	45	48	50	50	47	44	42	43	52	33	47	35	47	43	38	49	45	40	42	44
Reduce Inflation/COL	23	23	23	24	23	25	29	30	29	28	26	27	22	24	26	21	27	19	25	24	19	26	24	23	22	25
The Economy	9	10	9	10	11	10	10	13	13	14	11	9	10	9	11	7	10	8	10	9	9	9	10	8	9	9
Gov't Spending/Debt	4	4	3	3	3	3	2	2	3	3	3	3	4	5	8	2	6	4	5	5	3	8	3	7	7	3
Jobs/Unemployment*	2	4	3	3	4	4	3	3	2	2	4	3	4	3	4	2	3	3	5	3	5	4	5	1	2	4
Taxes	2	2	2	1	1	1	1	1	1	1	1	2	2	2	3	1	2	2	2	2	3	3	3	1	2	2
Gas/Energy Costs*	1	2	2	2	2	1	1	1	1	1	2	*	*	*	*	*	*	*	*	*	*	*	*	*	*	*
Social	27	24	24	25	26	24	22	22	22	20	20	27	27	29	16	43	18	41	29	28	40	23	28	30	29	29
Soc.Sec./Medicare	8	7	7	8	9	7	5	8	7	5	6	11	11	12	8	17	7	17	13	13	12	9	5	20	14	10
Climate Change/Envir.	6	3	5	4	4	4	3	4	4	3	2	4	4	4	1	8	2	7	4	4	4	4	5	3	4	4
Health care	4	6	3	4	5	3	4	3	3	2	2	5	6	6	4	8	4	8	6	6	5	5	7	4	5	6
Abortion	4	4	5	7	6	6	6	5	6	8	8	4	4	3	2	4	3	5	2	3	5	2	5	1	2	4
Race Relations	1	2	1	1	1	1	1	1	1	1	1	1	1	1	0	2	1	2	1	0	7	2	2	1	1	2
Improving Education	3	2	3	2	2	2	2	1	1	1	1	2	2	3	1	4	2	3	3	2	7	2	4	1	2	3
Security	21	20	23	23	21	18	17	14	15	16	17	16	17	16	26	6	29	7	10	17	9	17	16	15	19	13
Border/Immigration	10	13	14	14	12	11	10	10	9	12	11	10	10	9	17	2	17	3	6	10	1	10	8	10	11	7
Nat.l' Sec./Terrorism	4	2	3	3	3	3	2	2	3	1	2	2	4	4	6	3	7	2	2	4	4	3	4	4	4	4
Crime/Law & Order	3	2	2	3	2	2	2	1	2	1	2	2	2	2	2	1	3	1	1	1	4	2	2	1	2	1
Russia-Ukraine War	1	1	2	1	1	1	1	1	1	1	0	*	*	*	*	*	*	*	*	*	*	*	*	*	*	*
China	1	0	1	1	1	0	0	0	0	0	0	*	*	*	*	*	*	*	*	*	*	*	*	*	*	*
Hamas-Israel War	2	2	2	2	2	1	1	1	1	1	1	1	1	1	2	1	2	1	1	1	1	2	2	1	2	1
Honesty/Integrity/D.C	4	5	5	5	4	4	4	4	3	3	4	5	6	4	3	5	2	3	6	4	1	3	3	5	3	5
Election Integrity	2	2	2	2	1	1	1	1	1	1	1	*	*	*	*	*	*	*	*	*	*	*	*	*	*	*
COVID/Stop Spread	0	*	*	*	*	*	*	*	*	*	*	*	*	*	*	*	*	*	*	*	*	*	*	*	*	*
Indictments of Trump	3	3	3	3	3	2	1	1	1	2	2	*	*	*	*	*	*	*	*	*	*	*	*	*	*	*
Protecting Democracy	*	*	*	*	*	7	9	8	7	7	8	7	5	7	1	12	2	13	7	8	7	5	6	9	7	7
DK/Refused	2	3	1	2	2	2	2	1	2	2	1	2	2	2	2	1	1	2	1	1	4	3	2	1	1	2

Opinion: U.S. Economy (Time Series)



Opinion: U.S. Economy - Continued (Time Series)

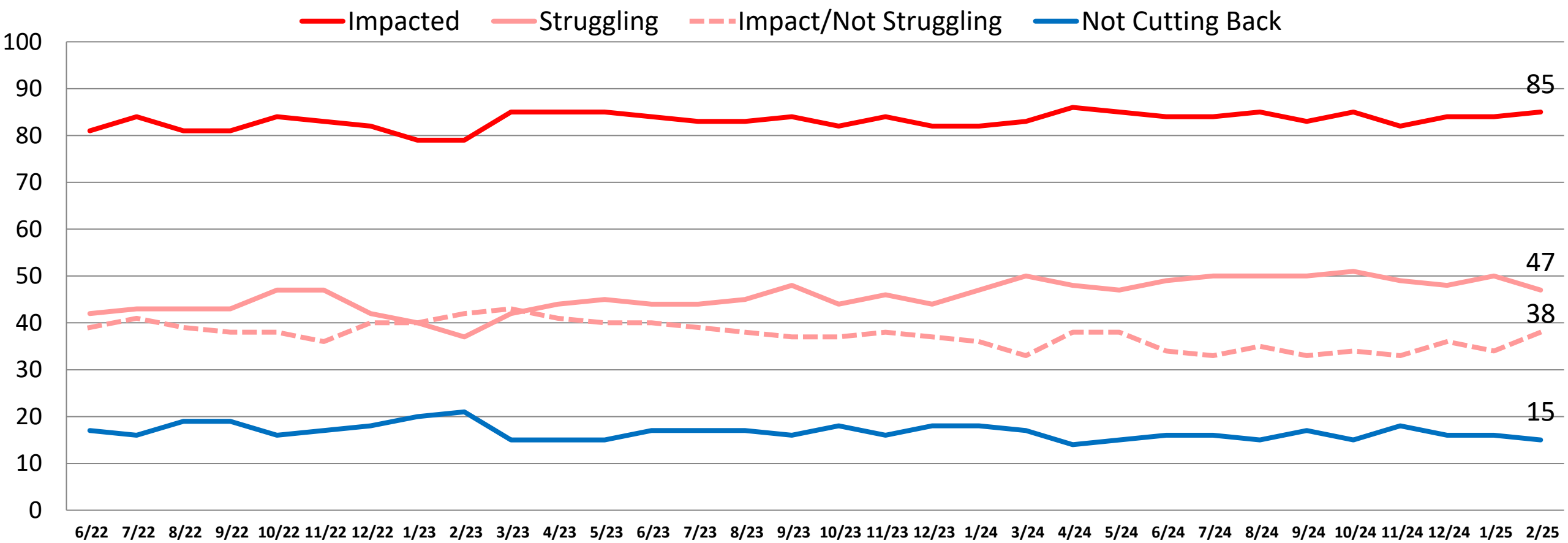


Current Opinion of U.S. Economy (Time Series)

	12/23	1/24	3/24	4/24	5/24	6/24	7/24	8/24	9/24	10/24	11/24	12/24	1/25	2/25	Vote DJT	Vote KH	Rep	Dem	Ind	White	Black	Hisp.	Und. 55	Over 55	Men	Women
Not Recession	46	49	49	48	46	44	47	47	48	50	54	48	49	48	48	50	50	46	46	50	39	41	41	55	55	40
Getting Better	21	21	21	21	19	20	19	19	19	20	28	21	20	22	36	10	37	11	15	23	13	23	21	22	27	17
Getting Worse	25	28	28	27	27	24	28	28	29	30	25	27	29	26	12	41	13	36	31	27	26	18	20	33	28	24
Recession	48	46	44	48	49	50	46	47	45	45	42	43	39	43	44	39	42	44	42	41	47	46	48	36	38	47
Getting Better	15	15	10	10	12	11	10	12	12	10	12	16	19	17	29	6	26	9	16	18	11	19	19	15	18	17
Getting Worse	33	32	34	38	37	39	37	36	33	34	30	28	20	25	15	32	15	35	26	23	36	28	29	21	19	31
D.K./Refused	6	5	7	5	5	6	7	6	7	6	5	8	11	10	8	11	8	10	12	9	14	13	11	9	7	12
Net Diff.	-2	3	5	0	-2	-6	1	-1	3	5	12	5	10	5	4	12	9	2	3	10	-8	-6	-7	19	18	-7
Getting Better	36	36	31	31	31	31	29	31	31	30	40	37	39	39	65	16	63	19	31	41	24	41	41	37	45	33
Getting Worse	58	59	63	64	64	62	65	63	61	65	55	55	49	51	27	73	29	71	57	51	62	46	49	54	48	54
D.K./Refused	6	5	7	5	5	6	7	6	7	6	5	8	11	10	8	11	8	10	12	9	14	13	11	9	7	12
Net Diff.	-23	-24	-32	-34	-34	-31	-36	-33	-30	-35	-15	-18	-10	-12	38	-57	35	-52	-26	-10	-38	-5	-8	-16	-2	-21

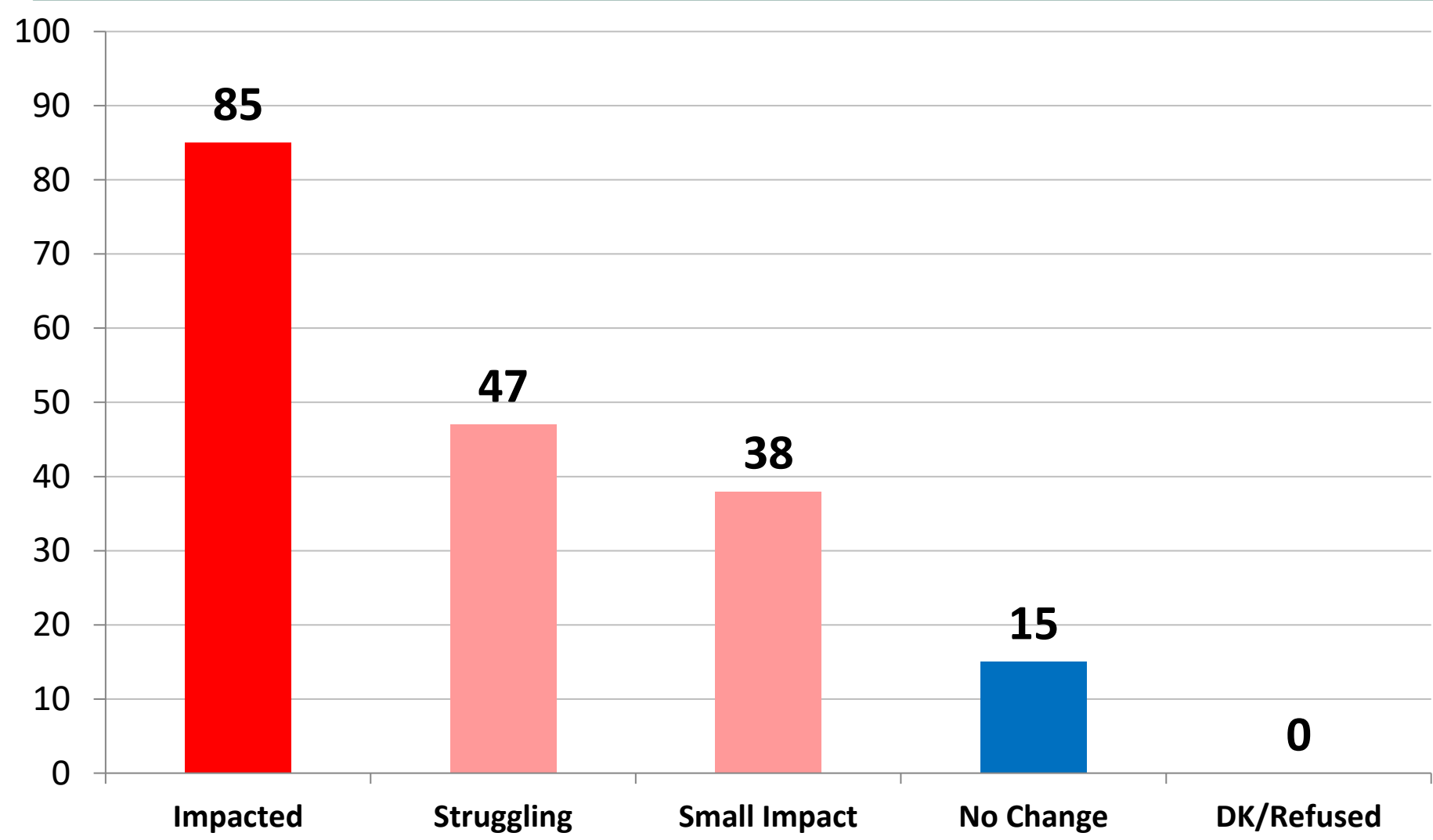
Which of the following best describes how inflation and higher costs have impacted your personal and household financial situation? (Time Series)

	6/22	7/22	8/22	9/22	10/22	11/22	12/22	1/23	2/23	3/23	4/23	5/23	6/23	7/23	8/23	9/23	10/23	11/23	12/23	1/24	3/24	4/24	5/24	6/24	7/24	8/24	9/24	10/24	11/24	12/24	1/25	2/25
Impacted	81	84	81	81	84	83	82	79	79	85	85	85	84	83	83	84	82	84	82	82	83	86	85	84	84	85	83	85	82	84	84	85
Struggling	42	43	43	43	47	47	42	40	37	42	44	45	44	44	45	48	44	46	44	47	50	48	47	49	50	50	50	51	49	48	50	47
Impact/Not Struggling	39	41	39	38	38	36	40	40	42	43	41	40	40	39	38	37	37	38	37	36	33	38	38	34	33	35	33	34	33	36	34	38
Not Cutting Back	17	16	19	19	16	17	18	20	21	15	15	15	17	17	17	16	18	16	18	18	17	14	15	16	16	15	17	15	18	16	16	15



Which of the following best describes how inflation and higher costs have impacted your personal and household financial situation?

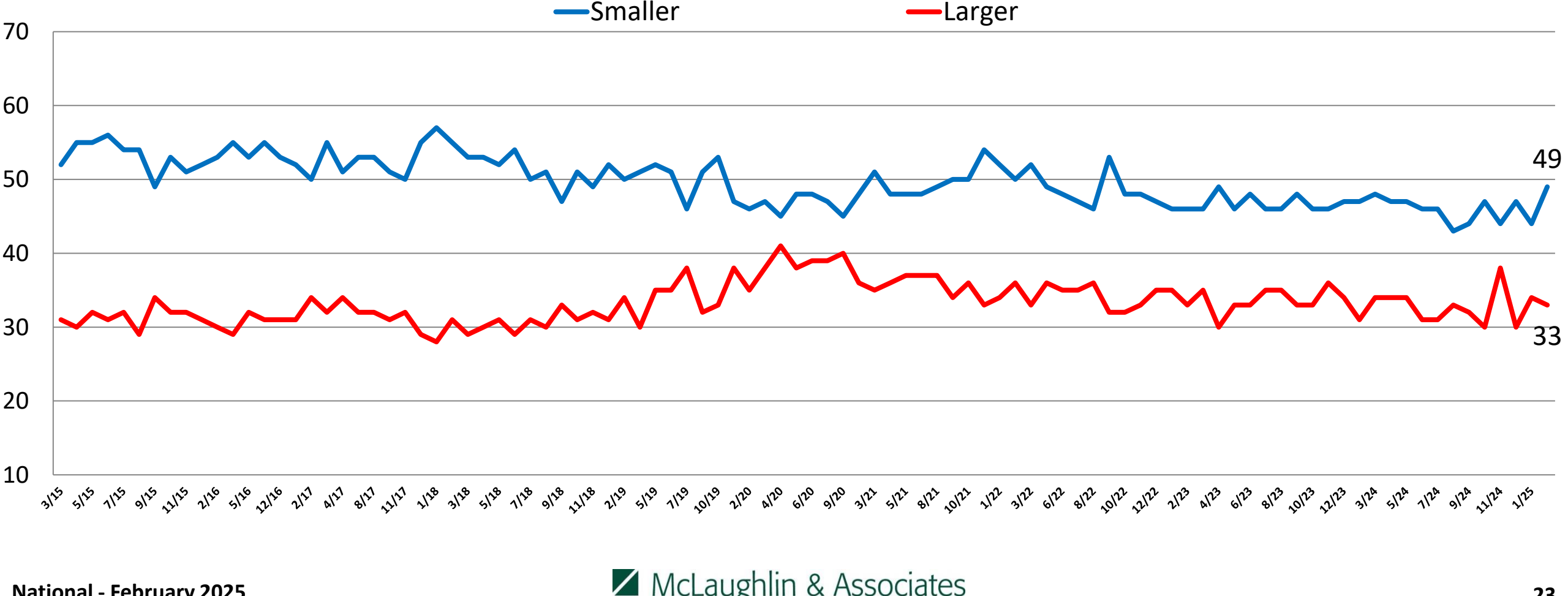
- 1) With inflation and higher prices, we are struggling to keep up and afford basic necessities.
- 2) We are not struggling but inflation and higher prices have had a significant impact on our finances and spending.
- 3) Despite inflation and higher prices, we are still able to afford our normal spending without cutting back.



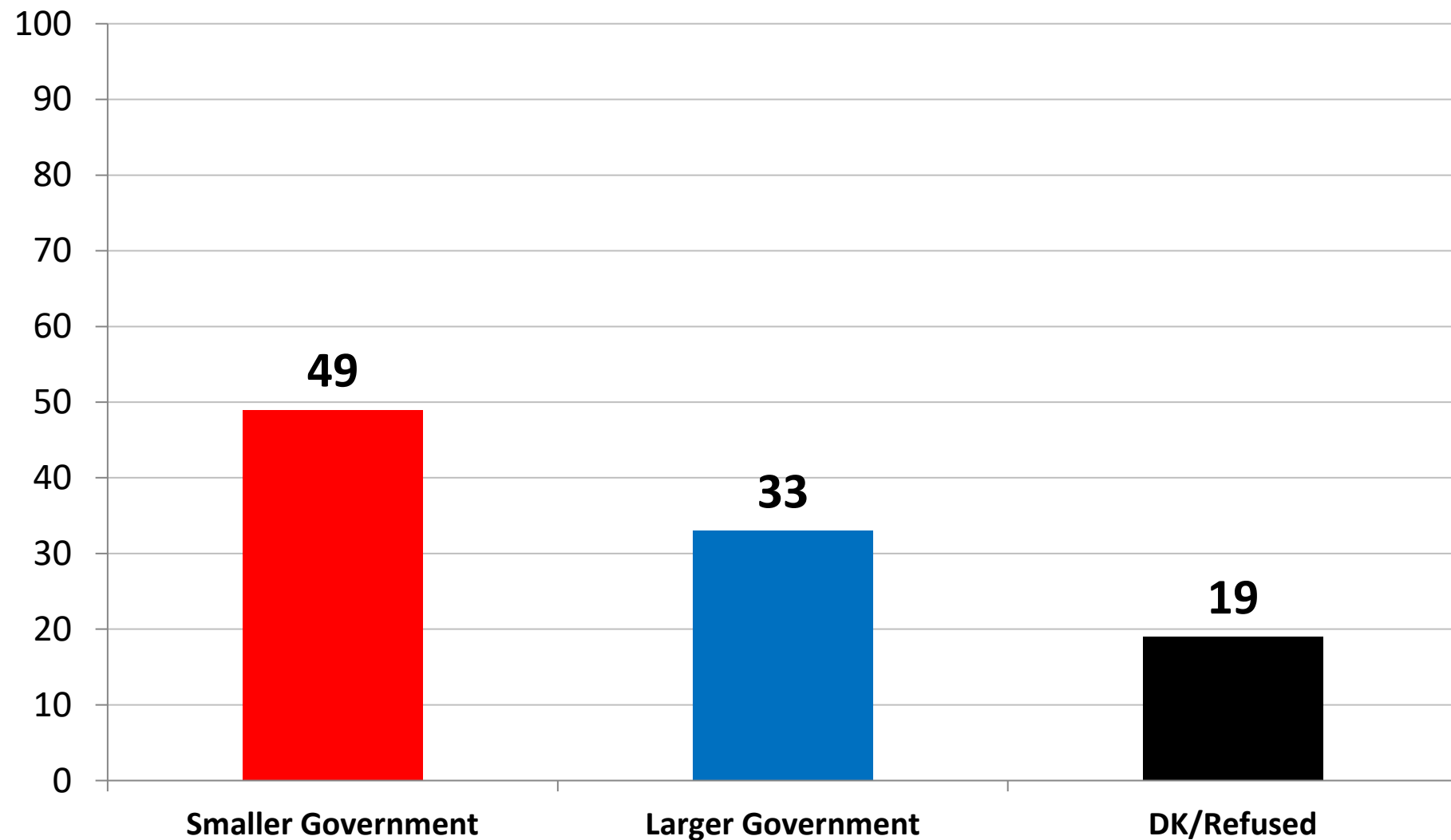
	Struggle	Impact	No Change
East	46	37	17
Midwest	42	35	23
South	45	41	14
West	55	36	10
Gen. Cong. – Vote GOP	45	39	16
Gen. Cong. – Vote DEM	46	39	15
Gen. Cong. – Vote UND	57	31	12
Approve Trump Job	44	39	17
Disapprove Trump Job	50	36	14
Republican	47	35	18
Democrat	50	35	15
Independent	42	46	12
Liberal	45	36	19
Moderate	47	39	14
Conservative	47	38	15
Vote Trump 2024	46	39	16
Vote Harris 2024	46	39	15
White	46	39	15
African-American	41	41	19
Hispanic	54	37	9
Under 55	52	35	14
Over 55	41	42	17
Married	38	44	18
Single	51	34	16
Men	42	38	20
Women	51	38	11
Live in Urban Area	46	39	16
Live in Suburban Area	45	40	16
Live in Rural Area	52	34	14

Would you say you most favor a smaller government with fewer services or a larger government with many services? (Time Series)

	3/21	4/21	5/21	6/21	8/21	9/21	10/21	11/21	1/22	2/22	3/22	4/22	6/22	7/22	8/22	9/22	10/22	11/22	12/22	1/23	2/23	3/23
Smaller Gov't	51	48	48	48	49	50	50	54	52	50	52	49	48	47	46	53	48	48	47	46	46	46
Larger Gov't	35	36	37	37	37	34	36	33	34	36	33	36	35	35	36	32	32	33	35	35	33	35
	4/23	5/23	6/23	7/23	8/23	9/23	10/23	11/23	12/23	1/24	3/24	4/24	5/24	6/24	7/24	8/24	9/24	10/24	11/24	12/24	1/25	2/25
Smaller Gov't	49	46	48	46	46	48	46	46	47	47	48	47	47	46	46	43	44	47	44	47	44	49
Larger Gov't	30	33	33	35	35	33	33	36	34	31	34	34	34	31	31	33	32	30	38	30	34	33



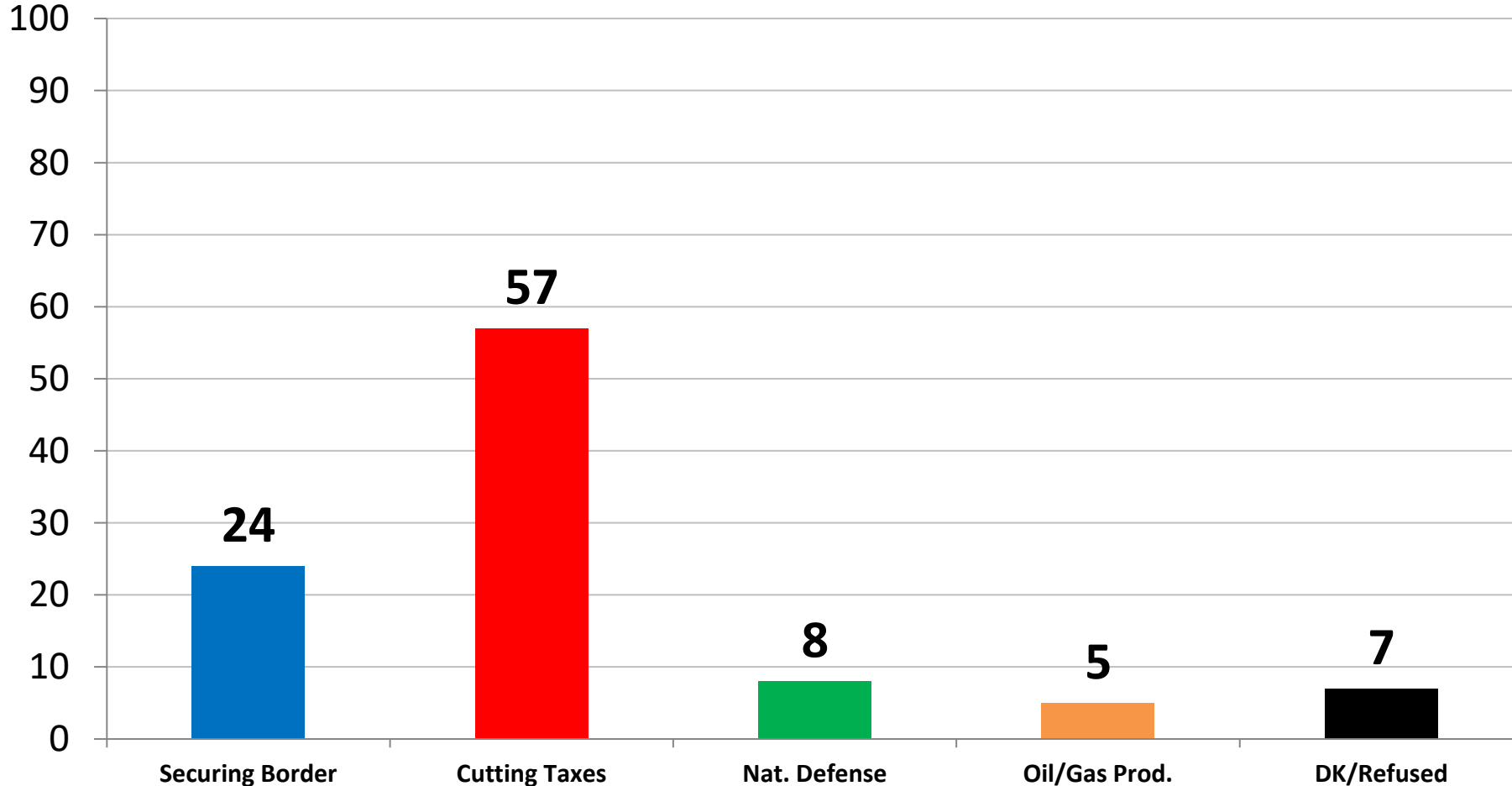
Would you say you most favor a smaller government with fewer services or a larger government with many services?



	Smaller	Larger
East	48	27
Midwest	50	31
South	50	32
West	46	40
Gen. Cong. – Vote GOP	73	18
Gen. Cong. – Vote DEM	25	50
Gen. Cong. – Vote UND	36	33
Approve Trump Job	69	22
Disapprove Trump Job	29	45
Republican	69	20
Democrat	26	50
Independent	49	29
Liberal	26	55
Moderate	40	34
Conservative	73	17
Vote Trump 2024	72	19
Vote Harris 2024	27	47
White	55	27
African-American	26	51
Hispanic	40	40
Under 55	41	39
Over 55	58	25
Married	57	27
Single	39	40
Men	60	32
Women	39	34
Live in Urban Area	36	46
Live in Suburban Area	51	31
Live in Rural Area	59	22

Which of the following is the most important for President Trump to accomplish?

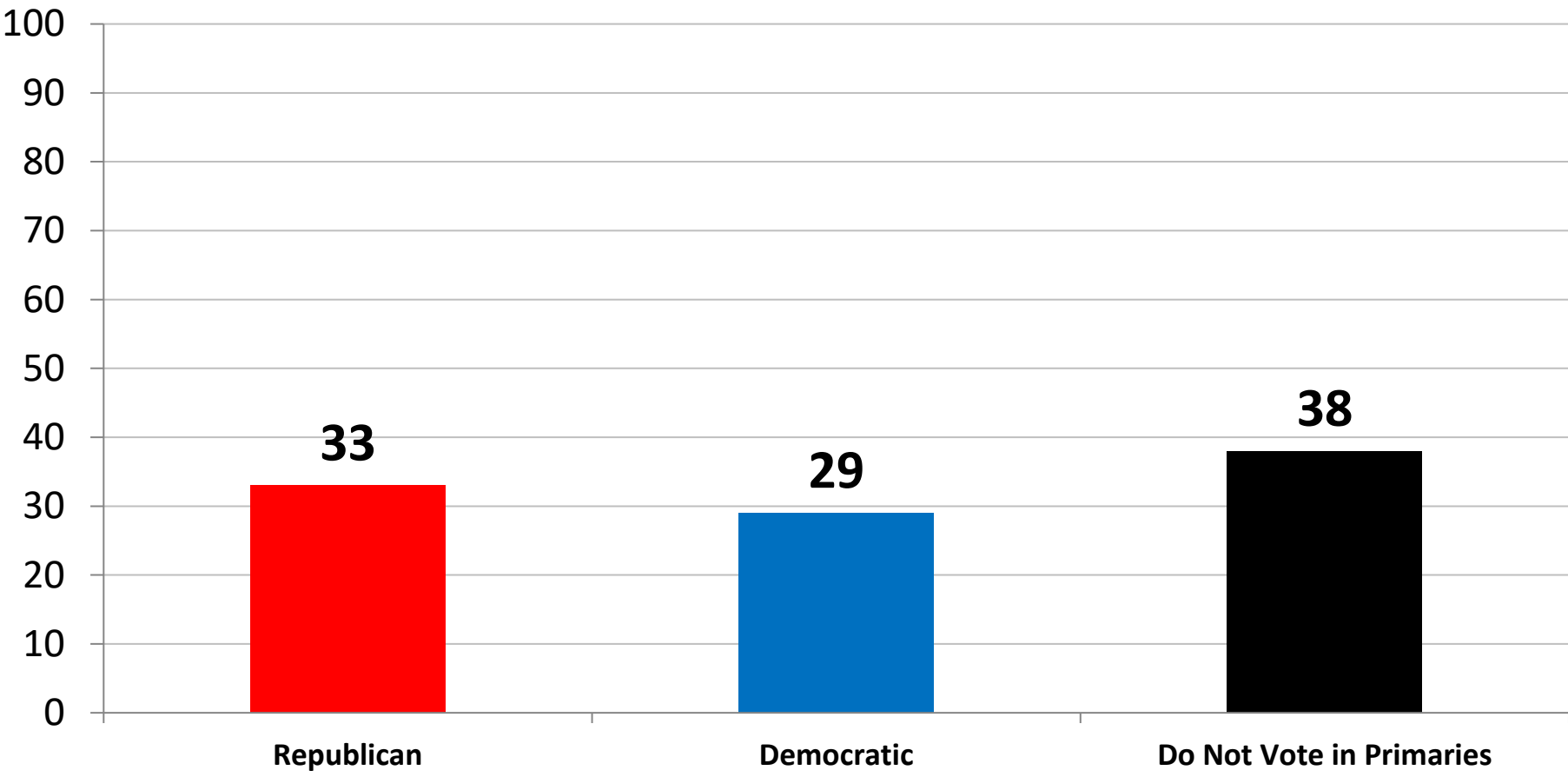
- 1) *Cutting taxes for middle-and working-class Americans to grow the economy and give people relief from high prices.*
- 2) *Securing the border and fixing our broken immigration system.*
- 3) *Strengthening national defense to prevent war.*
- 4) *Increasing oil and gas production.*



	Border	Taxes	Defense	Oil
East	18	59	8	7
Midwest	24	59	7	5
South	25	55	7	4
West	25	55	9	5
Gen. Cong. – Vote GOP	39	44	7	7
Gen. Cong. – Vote DEM	9	70	9	3
Gen. Cong. – Vote UND	15	64	7	2
Approve Trump Job	38	46	7	7
Disapprove Trump Job	9	69	8	3
Republican	39	42	9	7
Democrat	9	69	7	5
Independent	21	61	7	3
Liberal	11	68	8	4
Moderate	17	61	9	4
Conservative	39	45	6	7
Vote Trump 2024	39	45	6	7
Vote Harris 2024	8	68	9	4
White	26	57	7	4
African-American	15	47	12	9
Hispanic	17	64	7	5
Under 55	22	55	9	5
Over 55	26	59	6	5
Married	26	56	7	6
Single	19	57	8	5
Men	28	52	8	6
Women	20	61	7	5
Live in Urban Area	22	60	6	3
Live in Suburban Area	22	57	9	6
Live in Rural Area	29	54	7	5

Thinking ahead to the 2028 primary election for President, in which party's primary are you more likely to vote – the Republican primary or the Democratic primary? (n=300)

	12/24	1/25	2/25
Republican	33	30	33
Democratic	35	31	29
DNV Primaries	32	39	38



	GOP	DEM	DNV
East	28	21	51
Midwest	34	25	41
South	31	36	33
West	38	29	33
Gen. Cong. – Vote GOP	68	3	29
Gen. Cong. – Vote DEM	5	65	30
Gen. Cong. – Vote UND	26	17	56
Approve Trump Job	65	6	29
Disapprove Trump Job	10	50	40
Republican	0	0	0
Democrat	0	0	0
Independent	33	29	38
Liberal	6	63	30
Moderate	27	30	43
Conservative	62	6	31
Vote Trump 2024	71	5	24
Vote Harris 2024	7	55	38
White	34	27	40
African-American	32	42	27
Hispanic	29	36	35
Under 55	30	30	39
Over 55	35	29	36
Married	34	26	40
Single	28	34	38
Men	46	18	37
Women	24	37	39
Live in Urban Area	33	34	32
Live in Suburban Area	33	29	39
Live in Rural Area	33	27	41

Thinking ahead to the 2028 Democratic primary election for President, if that election were held today among the following candidates, for whom would you vote? (n=418)

	12/24	1/25	2/25	Vote DJT	Vote KH	Lib.	Mod.	Cons.	White	Black	Hisp.	Und. 55	Over 55	Men	Women
Kamala Harris	35	33	36	18	38	36	33	50	29	50	43	44	24	28	42
Pete Buttigieg	12	9	8	4	8	9	7	10	13	0	0	5	13	12	5
Gavin Newsom	7	7	4	7	4	7	2	0	5	2	6	3	7	7	2
Gretchen Whitmer	3	3	4	5	4	4	4	0	5	3	0	3	5	5	3
Tim Walz	5	3	4	0	4	4	2	8	4	2	0	5	2	2	5
A. O’Casio Cortez	3	6	3	7	3	4	2	4	3	3	5	4	2	4	3
Josh Shapiro	5	3	3	0	3	3	4	0	4	1	0	2	5	5	2
Amy Klobuchar	1	3	3	0	3	3	3	0	3	0	1	2	4	5	1
Cory Booker	2	2	3	2	3	3	3	0	3	4	2	2	4	3	3
JB Pritzker	3	1	2	0	2	2	2	4	2	2	2	1	4	3	2
Roy Cooper	*	*	2	5	2	1	3	4	1	3	7	3	2	3	1
Beto O’Rourke	3	1	2	0	2	2	2	0	2	0	4	2	2	2	2
Wes Moore	1	2	1	3	1	1	1	3	1	3	1	1	2	2	1
Deval Patrick	1	0	1	0	1	0	3	0	0	3	2	1	1	1	1
Phil Murphy	1	1	1	0	1	0	2	0	1	1	4	2	0	1	1
Stephen A. Smith	*	2	1	6	1	1	1	3	0	3	0	1	1	2	0
Jared Polis	0	1	0	0	0	0	1	0	0	0	2	1	0	1	0
Undecided	19	22	23	44	19	19	27	14	24	21	21	21	24	15	28

Thinking ahead to the 2028 Republican primary election for President, if that election were held today among the following candidates, for whom would you vote? (n=468)

	12/24	1/25	2/25	Vote DJT	Vote KH	Lib.	Mod.	Cons.	White	Black	Hisp.	Und. 55	Over 55	Men	Women
J.D. Vance	25	27	37	41	0	13	30	41	39	17	28	32	41	34	39
Donald Trump, Jr.	21	21	17	18	7	29	19	14	15	20	15	23	9	15	19
Ron DeSantis	9	8	6	7	0	0	4	8	7	0	8	5	8	7	5
Vivek Ramaswamy	4	3	4	3	2	0	3	4	4	4	3	5	2	3	5
Nikki Haley	4	2	3	3	14	3	4	3	4	0	0	2	5	4	3
Marco Rubio	2	3	3	3	8	7	2	3	3	8	3	2	4	5	1
Tulsi Gabbard	2	3	2	2	0	0	2	2	2	0	4	1	2	3	1
Kristi Noem	1	1	2	1	7	7	1	1	1	8	3	2	2	2	1
S. Huckabee Sanders	2	1	1	1	0	3	0	2	1	9	2	1	1	1	2
Larry Hogan	0	1	1	0	6	3	1	1	1	0	2	1	1	1	1
Tim Scott	3	1	1	1	3	0	0	1	1	0	0	1	1	1	0
Greg Abbott	1	2	1	0	5	5	1	0	0	5	6	1	0	1	1
Rick Scott	1	0	1	1	2	6	0	1	1	6	0	1	0	1	0
Tom Cotton	1	0	1	1	0	0	1	0	1	0	0	1	0	0	1
Glenn Youngkin	2	2	0	0	0	0	0	1	0	0	2	0	1	0	1
Elise Stefanik	0	0	0	0	0	0	0	0	0	0	0	0	0	0	0
Undecided	24	24	22	19	45	26	32	18	21	22	25	21	23	23	22

From the following list, what social networks do you use?

Ranked greatest to least by Total	1/25 Total	Total	Vote DJT	Vote KH	Rep.	Dem.	Ind.	White	A.A./Black	Hispanic	Under 55	Over 55	Men	Women
Facebook	71%	73%	75%	70%	77%	67%	73%	76%	61%	63%	70%	76%	69%	76%
YouTube	63%	68%	67%	69%	68%	70%	67%	66%	78%	74%	73%	63%	68%	68%
Instagram	41%	45%	41%	49%	43%	51%	42%	38%	73%	61%	58%	29%	35%	54%
TikTok	29%	30%	26%	32%	30%	35%	25%	24%	51%	43%	43%	14%	19%	40%
Pinterest	26%	29%	27%	30%	28%	31%	30%	29%	28%	35%	34%	24%	15%	42%
X (Formerly Twitter)	23%	24%	28%	20%	27%	24%	21%	20%	37%	33%	30%	17%	25%	23%
LinkedIn	23%	24%	22%	23%	22%	24%	25%	23%	19%	23%	23%	25%	24%	24%
Snapchat	18%	21%	20%	22%	22%	26%	16%	18%	32%	25%	33%	7%	14%	29%
Reddit	17%	17%	15%	17%	15%	16%	20%	16%	17%	21%	23%	9%	14%	20%
WhatsApp	16%	17%	17%	15%	17%	17%	15%	13%	17%	31%	19%	14%	18%	15%
Threads	7%	7%	5%	9%	5%	9%	8%	5%	13%	15%	10%	4%	5%	9%
Telegram	7%	6%	8%	4%	7%	5%	5%	5%	4%	14%	7%	4%	7%	4%
Truth Social	5%	4%	8%	2%	6%	2%	5%	4%	3%	9%	3%	6%	6%	3%
Tumblr	4%	4%	2%	5%	3%	6%	4%	3%	9%	6%	6%	2%	3%	5%
Rumble	3%	3%	5%	1%	4%	3%	3%	3%	4%	1%	4%	3%	3%	3%
Parler	2%	1%	1%	1%	1%	1%	2%	1%	2%	5%	2%	1%	1%	1%
CloutHub	1%	1%	1%	2%	1%	2%	0%	1%	2%	1%	2%	0%	1%	1%
Gab.com	1%	1%	2%	1%	2%	1%	1%	1%	0%	4%	2%	0%	1%	1%
Gettr	1%	1%	1%	1%	1%	1%	1%	1%	0%	2%	1%	0%	1%	1%
Other	2%	1%	0%	1%	0%	1%	2%	1%	1%	1%	1%	1%	1%	1%
None	7%	5%	6%	5%	5%	5%	6%	7%	2%	2%	3%	8%	8%	3%

Specifically, which of the following comes closest to your personal opinion about abortion laws?

	Total	Vote DJT	Vote KH	Rep.	Dem.	Ind.	White	Black	Hispanic	Under 55	Over 55	Men	Women
Pro-Life	51%	69%	32%	71%	34%	42%	49%	52%	61%	51%	50%	56%	46%
Not Legal in Any Case	8%	11%	5%	13%	5%	7%	7%	9%	15%	11%	5%	8%	9%
Legal to Save Mother	10%	15%	6%	14%	7%	8%	9%	13%	13%	12%	9%	10%	10%
Legal – Mother/Rape/Incest	32%	43%	21%	44%	23%	27%	32%	29%	32%	28%	36%	38%	26%
Pro-Choice	45%	27%	65%	25%	63%	52%	48%	40%	35%	43%	47%	40%	50%
Legal – Up To Certain Point	31%	22%	41%	20%	37%	39%	36%	16%	21%	28%	36%	30%	33%
Legal – Any Reason/Any Time	14%	5%	23%	4%	25%	13%	12%	24%	15%	16%	12%	10%	17%
DK/Refused	4%	4%	4%	4%	3%	6%	3%	8%	4%	6%	3%	4%	4%
Net Diff.	5%	42%	-33%	47%	-28%	-9%	1%	11%	26%	8%	3%	16%	-4%

At what point during the pregnancy should abortion be illegal and banned?

n=314	Total	Vote DJT	Vote KH	Rep.	Dem.	Ind.	White	Black	Hispanic	Under 55	Over 55	Men	Women
1st Trimester	55%	71%	48%	69%	54%	46%	54%	58%	53%	63%	47%	48%	60%
After First Heartbeat – 6 weeks	13%	21%	9%	18%	14%	9%	12%	14%	17%	19%	8%	10%	15%
After 15 Weeks	42%	49%	39%	51%	41%	37%	42%	44%	36%	44%	40%	39%	44%
After 2nd Trimester	24%	14%	29%	14%	27%	28%	24%	12%	28%	25%	24%	27%	22%
Other	21%	16%	22%	17%	19%	26%	22%	30%	19%	12%	29%	25%	18%

Voter Proclivity	Total	Age	Total	Region	Total	Marital Status	Total
Always Vote	64%	18-29	13%	New England	5%	Single	36%
Almost Always	23%	30-40	16%	Middle Atlantic	12%	Never Married	30%
Vote Most of the Time	14%	41-55	25%	East North Central	15%	Live w/ Significant Other	6%
Direction		56-65	20%	West North Central	7%	Married	43%
Right Track	41%	65+	26%	South Atlantic	22%	Separated	2%
Wrong Direction	50%	Mean Age	51.1	East South Central	6%	Divorced	13%
Party Registration		Race		West South Central	10%	Widowed	6%
Republican	37%	White	72%	Mountain	8%	LGBTQ+	
Democrat	33%	African American/Black	11%	Pacific	15%	Yes	9%
Independent/Other	30%	Hispanic	11%	Grouped Region		No	90%
Ideology		Asian	4%	East	17%	Abortion	
Liberal	24%	Other	2%	Midwest	22%	Pro-Life	51%
Very	10%	Latino Household		South	38%	Pro-Choice	45%
Moderate	40%	Yes	11%	West	23%	Immigrant Household	
Conservative	37%	No	89%	Area		Yes	26%
Very	18%	Religion		Urban	27%	No	70%
Vote Behavior		Protestant	37%	Suburban	49%	>\$5k in 401k/Investments	
Democrat	40%	Catholic	22%	Rural	24%	Yes	46%
Ticket Splitter	17%	Atheist/Agnostic	11%	2024 Presidential States		No	50%
Republican	43%	Jewish	3%	Trump States	60%	Wealth Status	
Education		Mormon	1%	Harris States	40%	Wealthy	3%
Less than College	60%	Buddhist	2%	2020 Presidential States		Middle Class	82%
College Graduate	40%	Muslim	1%	Trump States	41%	Upper Middle	10%
Gender		Born Again/Evangelical n=593		Biden States	59%	Middle	44%
Male	48%	Yes	43%			Lower Middle	29%
Female	52%	No	57%			Poor	15%



McLaughlin & Associates

D.C./Virginia Office

1012 Cameron Street
Alexandria, VA 22314
703-518-4445

New York Office

566 South Route 303
Blauvelt, NY 10913
845-365-2000

www.mclaughlinonline.com